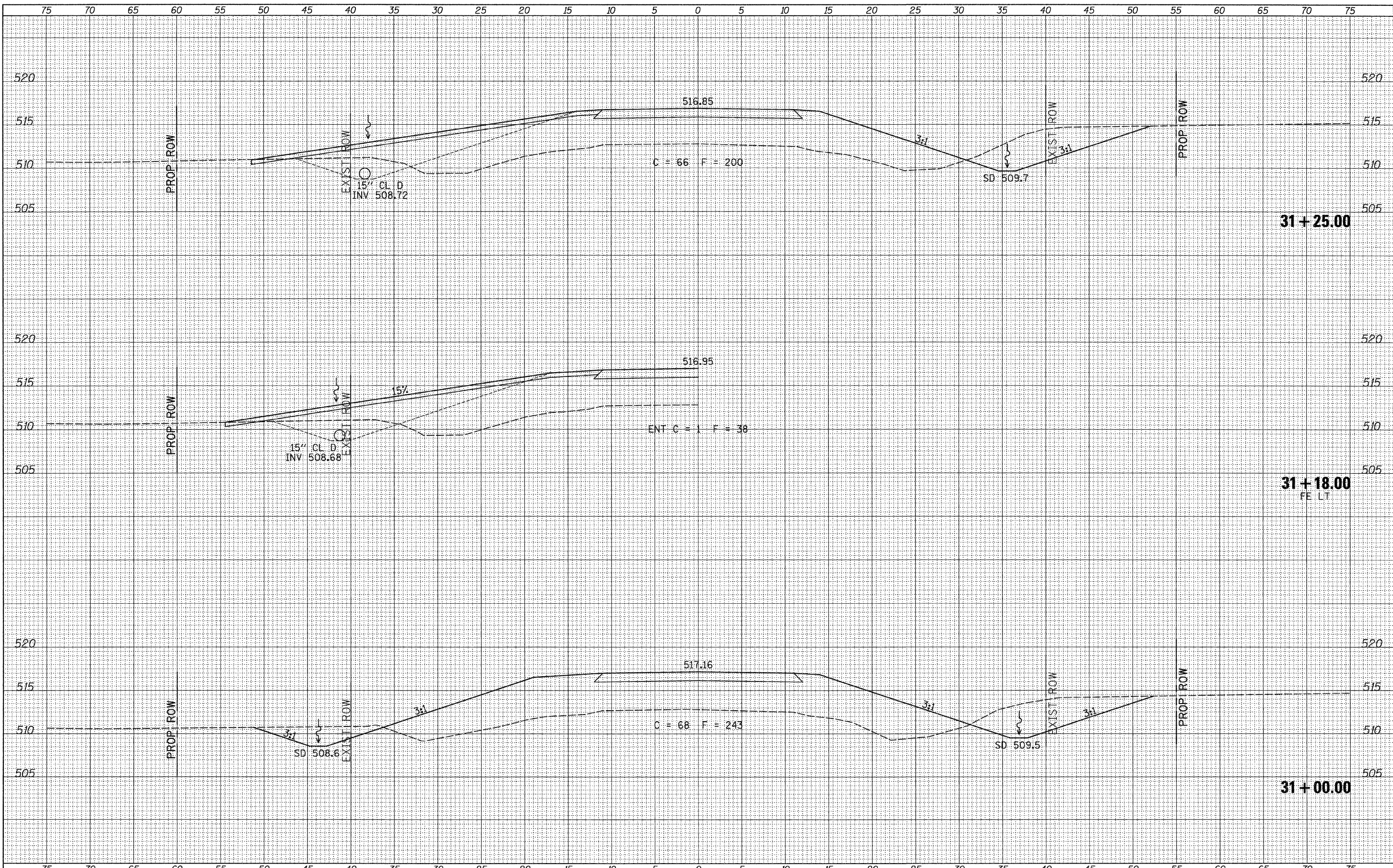


DATE	
BY	
FINISHED SURVEY	
PLOTTED	
NOTE BOOK	
AREAS CHECKED	
NO.	

DATE	
BY	
ORIGINAL SURVEY	
PLOTTED	
NOTE BOOK	
AREAS CHECKED	
NO.	



FILE NAME = V:\Bridges\2964 - Mason\2964\kxhts.dgn

USER NAME = cthomas	DESIGNED -	REVISED -
	DRAWN -	REVISED -
PLOT SCALE = 5.0000' / IN.	CHECKED -	REVISED -
PLOT DATE = 10/21/2011	DATE -	REVISED -

**MASON COUNTY
COUNTY HIGHWAY 5 OVER
DUFF ARMSTRONG DITCH**

CROSS SECTIONS
SCALE: 1"=5'
SHEET NO. 6 OF 9 SHEETS
STA. 31+00.00 TO STA. 31+25.00

F.A.S. RTE.	SECTION	COUNTY	TOTAL SHEETS	SHEET NO.
572	10-00016-02-BR	MASON	22	19
CONTRACT NO. 93568				
FED. ROAD DIST. NO. 7 ILLINOIS FED. AID PROJECT BR5-0572(305)				