

STATE OF ILLINOIS
DEPARTMENT OF TRANSPORTATION
**PLANS FOR PROPOSED
HIGHWAY BRIDGE PROGRAM**

F.A.S. 573 (C.H. 1) OVER PIKE CREEK TRIBUTARY

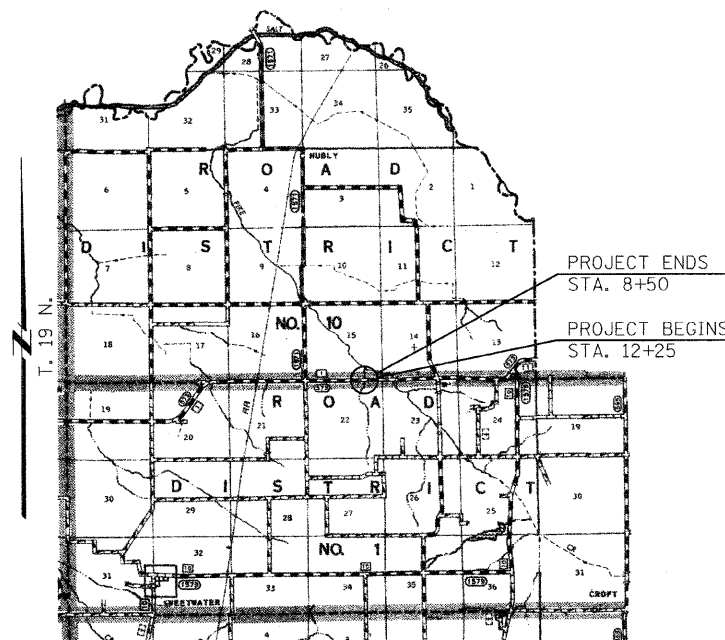
SECTION 11-00063-00-BR

PROJECT BRS-0573(320)

MENARD COUNTY

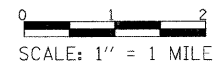
C-96-221-12

R. 5 W. 3rd P.M.



LOCATION PLAN

LENGTH OF SECTION - 375.00 FEET = 0.071 MILES



EXISTING STRUCTURE: SINGLE SPAN PRECAST CONCRETE DECK SUPPORTED BY CLOSED TIMBER ABUTMENTS WITH TIMBER WINGWALLS. ±24'-6" BK.-BK. ABUTMENTS, ±30'-0" OUT.-OUT. DECK. CONCRETE CURBS AND STEEL RAILING. ±0° SKEW. EXIST. S.N. 065-3003

PROPOSED STRUCTURE: SINGLE SPAN PRECAST PRESTRESSED CONCRETE DECK BEAM BRIDGE (27" DEPTH) ON OPEN CONCRETE ABUTMENTS. 30'-0" OUT.-OUT. DECK, 69'-0" BK.-BK. ABUTMENTS. STEEL RAILING TYPE S-1, 0° SKEW. PROP. S.N. 065-3127

INDEX OF SHEETS

- 1 - TITLE SHEET
- 2 - SUMMARY OF QUANTITIES, DETAILS, & TYPICAL SECTIONS
- 3 - ROADWAY DETAILS & SCHEDULES
- 4 - PLAN & PROFILE
- 5 - GRADING PLAN
- 6 - GENERAL PLAN & ELEVATION
- 7 & 8 - SUPERSTRUCTURE
- 9 - RAILING
- 10 - ABUTMENTS
- 11 - METAL SHELL PILE DETAILS
- 12 - 15 - CROSS SECTIONS

STANDARDS

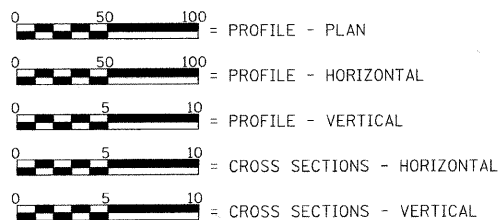
- STANDARD 515001-03
- STANDARD 630301-05
- STANDARD 701011-02
- STANDARD 701901-02
- STANDARD BLR 21-9
- STANDARD BLR 27-1

LIST OF UTILITIES

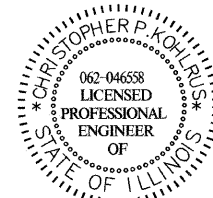
FRONTIER COMMUNICATIONS
1-800-921-8101

MENARD ELECTRIC COOPERATIVE
P.O. BOX 100
PETERSBURG, ILLINOIS 62675
1-217-632-7746

SCALE IN FEET



LAND SECTION - 22
LAND QUARTER SECTION - N.E.
FUNCTIONAL CLASSIFICATION: MAJOR COLLECTOR (NON-URBAN)
A.D.T. - 400 (2010)
A.D.T. - 553 (2020)
50 M.P.H. DESIGN SPEED



Christopher P. Kohr 3/6/12
EXPIRATION: 11/30/2013

| |
|--|
| APPROVED <i>R. B. B.</i> , 2012 <i>Thomas R. Cass</i> COUNTY ENGINEER |
| PASSED <u>March 21, 2012</u> <i>Terrence H. Fountain</i> M.A.S. DISTRICT SIX ENGINEER OF LOCAL ROADS & STREETS |
| PASSED <u>March 21, 2012</u> <i>Ron Ashambeau</i> DISTRICT SIX CONSTRUCTION ENGINEER |
| Releasing For Bid Based on Limited Review <u>March 21, 2012</u> <i>Roger L. Driscoll</i> M.A.S. DEPUTY DIRECTOR OF HIGHWAYS, REGION FOUR ENGINEER STATE OF ILLINOIS DEPARTMENT OF TRANSPORTATION |

TOLL FREE
"JOINT UTILITY LOCATION INFORMATION FOR EXCAVATORS"
(J.U.L.I.E.) TELEPHONE NUMBER
1-800-892-0123

CONTRACT NO. **93573**

| | | | | | | | | | |
|-----------------------|--------------------|------------|-----------|--|--|-------------|---|--------------|---|
| FILE NAME = #BELLS | USER NAME = BUSERS | DESIGNED = | REVISED = | | Allen Henderson & Associates, Inc. Civil and Structural Engineers Springfield, IL. 62703 Phone: (217)544-8033 IL Design Firm No. 184-001907 | TITLE SHEET | SCALE: 1" = 1 MILE SHEET NO. 1 OF 15 SHEETS | STA. TO STA. | C.H. RTE. SECTION COUNTY TOTAL SHEETS SHEET NO. 1 11-00063-00-BR MENARD 15 1 |
| | | | | | | | | | CONTRACT NO. 93573 |
| | | | | | | | | | FED. ROAD DIST. NO. ILLINOIS FED. AID PROJECT |