

SAFE ROUTES TO SCHOOL PROGRAM SIDEWALK IMPROVEMENTS

VILLAGE OF ILLIOPOLIS
SECTION 10-00015-00-SW
PROJECT SRTS-4009(052)
SANGAMON COUNTY

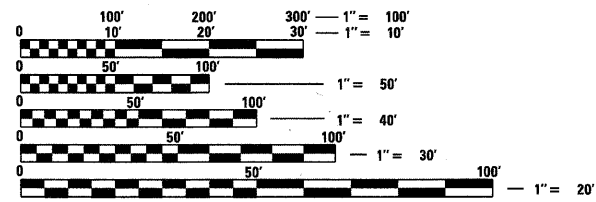
C-40-089-09

INDEX OF SHEETS

- 1 COVER SHEET
- 2 GENERAL NOTES
- 3 SUMMARY OF QUANTITIES
- 4 TYPICAL SECTIONS
- 5 - 7 SCHEDULE OF QUANTITIES
- 8 DRIVEWAY AND ALLEY DETAILS
- 9 DETAILS
- 10 - 15 PLAN AND PROFILES
- 16 - 22 SIDEWALK DETAILS

HIGHWAY STANDARDS

- 000001-06 STANDARD SYMBOLS, ABBREVIATIONS & PATTERNS
- 280001-06 TEMPORARY EROSION CONTROL SYSTEMS
- 424001-06 PERPENDICULAR CURB RAMPS FOR SIDEWALKS
- 424016 MID-BLOCK RAMPS FOR SIDEWALKS
- 424026 ENTRANCE / ALLEY PEDESTRIAN CROSSINGS
- 701001-02 OFF-RD OPERATIONS, 2L, 2W, MORE THAN 15' (4.5m) AWAY
- 701006-03 OFF-RD OPERATIONS, 2L, 2W, 15' (4.5m) TO 24" (600 mm) FROM PAVEMENT EDGE
- 701011-02 OFF-RD MOVING OPERATIONS, 2L, 2W, DAY ONLY
- 701501-06 URBAN LANE CLOSURE, 2L, 2W, UNDIVIDED
- 701801-05 SIDEWALK CORNER OR CROSSWALK CLOSURE
- 701901-02 TRAFFIC CONTROL DEVICES
- 720001-01 SIGN PANEL MOUNTING DETAILS
- 720011-01 METAL POSTS FOR SIGNS, MARKERS & DELINEATORS
- 729001-01 APPLICATIONS OF TYPES A & B METAL POSTS (FOR SIGNS & MARKERS)

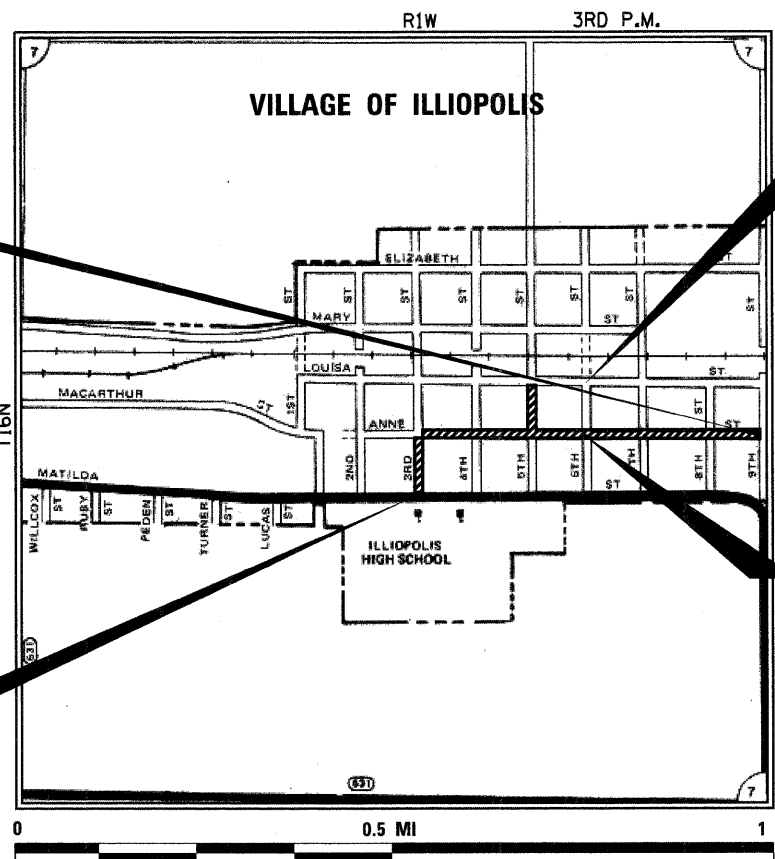


FULL SIZE PLANS HAVE BEEN PREPARED USING STANDARD ENGINEERING SCALES. REDUCED SIZED PLANS WILL NOT CONFORM TO STANDARD SCALES. IN MAKING MEASUREMENTS ON REDUCED PLANS, THE ABOVE SCALES MAY BE USED.

J.U.L.I.E.
JOINT UTILITY LOCATION INFORMATION FOR EXCAVATION
1-800-892-0123
OR 811

WHKS & CO.
ENGINEERING
7018 KINGSMILL CT.,
SPRINGFIELD, IL
(217) 483-9457
DESIGN FIRM #184001036

CONTRACT NO. 93576



LOCATION MAP SCALE
LOCATION MAP

TOTAL LENGTH = 3363.88 FEET (0.637 MI)
NET LENGTH = 3363.88 FEET (0.637 MI)



James A. Colbrook, Jr. 03-24-12
EXPIRES 11/30/13

END PROJECT
STA. 204 + 17.63

BEGIN IMPROVEMENT
STA. 200 + 00

END PROJECT
STA. 39 + 89.79

BEGIN PROJECT
STA. 10 + 43.54

F.A.X. RTE.	SECTION	COUNTY	TOTAL SHEETS	SHEET NO.
XXX	10-00015-00-SW	SANGAMON	22	1
ILLINOIS CONTRACT NO. 93576				



APPROVED March 24 20 12
Robert Weathers
PRESIDENT - VILLAGE OF ILLIOPOLIS

PASSED April 6 20 12
Terrine Fountain
DISTRICT SIX ENGINEER OF ^{CTD}
LOCAL ROADS AND STREETS

Ron Buchanan 4-6-12
DISTRICT SIX ENGINEER OF
CONSTRUCTION

Released For Bid Based on Limited Review APRIL 6 20 12

Roger Driskell
DEPUTY DIRECTOR OF HIGHWAYS
REGION FOUR ENGINEER

STATE OF ILLINOIS
DEPARTMENT OF TRANSPORTATION

**PRINTED BY THE AUTHORITY
OF THE STATE OF ILLINOIS**

GENERAL NOTES

1. ALL CONSTRUCTION SHALL COMPLY WITH THE IDOT "STANDARD SPECIFICATIONS FOR ROAD AND BRIDGE CONSTRUCTION", JANUARY 1, 2012 EDITION (INCLUDING CURRENT SUPPLEMENTAL SPECIFICATIONS AND RECURRING SPECIAL PROVISIONS).
2. NO WORK SHALL COMMENCE UNTIL ALL TRAFFIC CONTROL REQUIREMENTS ARE MET.
3. ALL UTILITIES, SCHOOL DISTRICTS, LOCAL POLICE AND FIRE DEPARTMENTS SHALL BE NOTIFIED BY THE CONTRACTOR PRIOR OT THE START OF CONSTRUCTION.
4. DURING CONSTRUCTION, THE CONTRACTOR WILL BE REQUIRED AT HIS/HER EXPENSE, TO HAVE A WATER TRUCK OR SIMILAR EQUIPMENT AVAILABLE TO CONTROL DUST IF NECESSARY. THE CONTRACTOR SHALL BE REQUIRED TO CONTROL DUST DURING WORKING AND NON-WORKING HOURS.
5. ALL EXCESS MATERIAL WASTE SHALL BE LEGALLY DISPOSED OF OUTSIDE THE LIMITS OF THE RIGHT-OF-WAY. IT SHALL BE THE CONTRACTOR'S RESPONSIBILITY TO SELECT DUMP SITES AND OBTAIN PERMISSION TO USE SUCH DUMP SITES. PAYMENT FOR THIS WORK WILL NOT BE PAID FOR SEPARATELY, BUT SHALL INCLUDED IN THE COSTS OF THE ASSOCIATED PAY ITEMS.
6. ACCESS TO ALL SIDE ROADS AND ENTRANCES SHALL BE MAINTAINED BY THE CONTRACTOR DURING ALL STAGES OF CONSTRUCTION, UNLESS OTHERWISE DIRECTED BY THE ENGINEER.
7. THE CONTRACTOR WILL BE REQUIRED TO RELOCATE OR REMOVE AND REPLACE ALL ROAD SIGNS WHICH INTERFERE WITH CONSTRUCTION OPERATIONS AND TO TEMPORARILY RESET ALL SUCH SIGNS DURING ALL STAGES OF CONSTRUCTION. THIS WORK SHALL BE INCLUDED IN THE COST OF THE CONTRACT.
8. ALL WORK INVOLVING ROAD SIGNS SHALL BE COVERED BY THE FOLLOWING REQUIREMENTS:
 - A. SIGNS SHALL NOT BE MOVED UNTIL NECESSITATED BY THE PROGRESS OF WORK.
 - B. EVERY SIGN REMOVED MUST BE RE-ERECTED AT A TEMPORARY LOCATION IN A WORKMANLIKE MANNER AND VISIBLE TO TRAFFIC FOR WHICH IT IS INTENDED. ALL SUCH SIGNS MUST BE MAINTAINED STRAIGHT AND CLEAN FOR THE DURATION OF THE TEMPORARY SETTING.
 - C. ALL SIGNS SHALL BE RE-ERECTED AT PROPOSED LOCATIONS AS THE ROADWAY IS COMPLETED. HORIZONTAL LOCATION FROM THE EDGE OF PAVEMENT SHALL BE AS DIRECTED BY THE ENGINEER.
 - D. ALL UNUSED SIGNS SHALL BE RETURNED TO THE VILLAGE OF ILLIOPOLIS OR SANGAMON COUNTY, AS DIRECTED BY THE ENGINEER.
9. THE CONTRACTOR SHALL NOTIFY J.U.L.I.E. (JOINT UTILITY LOCATING INFORMATION FOR EXCAVATORS) TOLL-FREE @ 1 (800) 892-0123, 48 HOURS PRIOR TO THE COMMENCEMENT OF ANY WORK.
10. THE CONTRACTOR SHALL BE RESPONSIBLE FOR NOTIFYING ALL PUBLIC AND PRIVATE UTILITY COMPANIES, WHICH MAY HAVE OVERHEAD OR UNDERGROUND FACILITIES IN THE AREA, BEFORE CONSTRUCTION BEGINS.
11. THE CONTRACTOR SHALL BE RESPONSIBLE FOR CONTACTING LOCAL AGENCIES MAINTAINING SANITARY SEWERS, WATER MAINS, AND STREET LIGHTS TO VERIFY THE MATERIALS AND METHODS ALLOWED FOR THE ADJUSTMENT, RELOCATION OR EXTENSION OF THE UTILITY INVOLVED.
12. THE INFORMATION PERTAINING TO THE LOCATION OF THE EXISTING OVERHEAD OR UNDERGROUND UTILITY FACILITIES SHOWN ON THE PLANS HAS BEEN TAKEN FROM THE RECORDS OF THE UTILITY COMPANIES. THE INFORMATION IS INCLUDED ONLY FOR THE CONVENIENCE OF THE CONTRACTOR. THE COUNTY, THE VILLAGE AND THE ENGINEER ASSUME NO RESPONSIBILITY WHATSOEVER WITH RESPECT TO THE SUFFICIENCY OR ACCURACY OF THE INFORMATION SHOWN ON THE PLANS RELATIVE TO THE LOCATION OF ANY OF THE UTILITY FACILITIES.
13. SPECIAL CARE SHALL BE TAKEN IN EXCAVATING AND GRADING NEAR UTILITIES AND TREES TO BE SAVED IN ORDER TO AVOID UNNECESSARY DAMAGE.
14. WHERE SECTION OR SUBSECTION MONUMENTS ARE ENCOUNTERED, THE ENGINEER SHALL BE NOTIFIED BEFORE SUCH MONUMENTS ARE REMOVED. THE CONTRACTOR SHALL PROTECT AND CAREFULLY PRESERVE ALL PROPERTY MARKERS AND MONUMENTS UNTIL THE OWNER AND AUTHORIZED SURVEYOR OR AGENT HAS WITNESSED OR OTHERWISE REFERENCED THEIR LOCATIONS.

15. ALL DISTURBED EARTH SURFACES WITHIN THE LIMITS OF THE RIGHT-OF-WAY AND EASEMENTS SHALL BE SEEDED AS DIRECTED BY THE ENGINEER. QUANTITIES FOR "NITROGEN FERTILIZER NUTRIENT", "PHOSPHORUS FERTILIZER NUTRIENT", AND "POTASSIUM FERTILIZER NUTRIENT", SHALL BE USED IN ACCORDANCE WITH SECTION 201 OF THE ROOT PRUNING, SECTION 250 FOR SEEDING, AND SECTION 252 FOR SODDING APPLICATION METHODS, AND RATIOS SHALL BE SPECIFIED IN THE APPLICATION SECTION.
16. SIDEWALK INTERSECTION SHALL BE CAST MONOLITHICALLY WITH JOINT LINES PLACED AS NEAR TO PERPENDICULAR AS POSSIBLE WITH SIDEWALK EDGE TO AVOID NARROW OR POINTED PIECES OF CONCRETE.

SIDEWALK RAMP NOTES

1. ALL DISTURBED AREAS RESULTING FROM SIDEWALK CONSTRUCTION SHALL BE GRADED SMOOTH AND SEEDED.
2. DIMENSIONS AND QUANTITIES SHOWN FOR SIDEWALK RAMPS ARE TYPICAL AND APPROXIMATE. LIMITS OF REMOVAL, MAY VARY IN ORDER TO MEET THE REQUIRED SLOPES. DIMENSIONS AND QUANTITIES WILL BE ADJUSTED IN THE FIELD BY THE CONTRACTOR TO ENSURE THAT SLOPES AND DIMENSIONS REQUIRED BY STANDARD 424001 ARE MET.
3. WHERE EXISTING SIDEWALK PANELS ARE TO BE REMOVED TO CONSTRUCT THE NEW SIDEWALK RAMPS, THE FOLLOWING CRITERIA SHALL BE APPLIED.
 - a. IF PANELS ARE CUT IN MID PANEL, THE REMAINING PORTION OF ANY EXISTING PANEL SHALL NOT BE LESS THAN 3 FEET IN THE DIRECTION OF TRAVEL. PANELS SHALL BE SAWCUT IN A STRAIGHT LINE – GENERALLY PERPENDICULAR ACROSS THE SIDEWALK.
 - b. IF PANELS ARE CUT AT PANEL JOINTS, THE PANEL SHALL BE SAWCUT IN A STRAIGHT LINE ALONG THE PANEL JOINT.
4. THE COST OF SAWCUTTING WILL NOT BE PAID FOR SEPARATELY, BUT SHALL BE INCLUDED IN THE COST OF SIDEWALK REMOVAL.
5. EXPANSION JOINTS SHALL BE INSTALLED AT THE INTERFACE BETWEEN EXISTING AND NEW SIDEWALK.

UTILITY COMPANIES
 AMEREN – IP
 2460 NORTH JASPER STREET, H-15
 DECATUR, IL 62526
 (217) 424-70775
 ATTN: BOB ZUEGE

COMCAST
 1275 N. WATER STREET
 DECATUR, IL 62521
 (217) 424-4206
 ATTN: KEITH KOSHINSKI

FRONTIER
 330 W. BEECHER STREET
 JACKSONVILLE, IL 62650
 (217) 243-0211
 ATTN: CHARLES JENKINS

VILLAGE OF ILLIOPOLIS
 P.O. BOX 299
 ILLIOPOLIS, IL 62539
 (217) 486-2511
 ATTN: DENNY STACEY

WHKS & CO.
 ENGINEERING
 7018 KINGSMILL CT.,
 SPRINGFIELD, IL
 (217) 483-9457
 DESIGN FIRM #184001036

USER NAME = bmetthies	DESIGNED -	REVISED
FILE NAME = 7524_GEN_SHT.dgn	CHECKED -	REVISED
PLOT SCALE = 5.0000' / IN.	DRAWN -	REVISED
PLOT DATE = 3/22/2012	CHECKED -	REVISED

**STATE OF ILLINOIS
 DEPARTMENT OF TRANSPORTATION**

**GENERAL NOTES
 ILLIOPOLIS SIDEWALK IMPROVEMENT**

SCALE: NTS SHEET NO. 1 OF 1 SHEETS STA. TO STA.

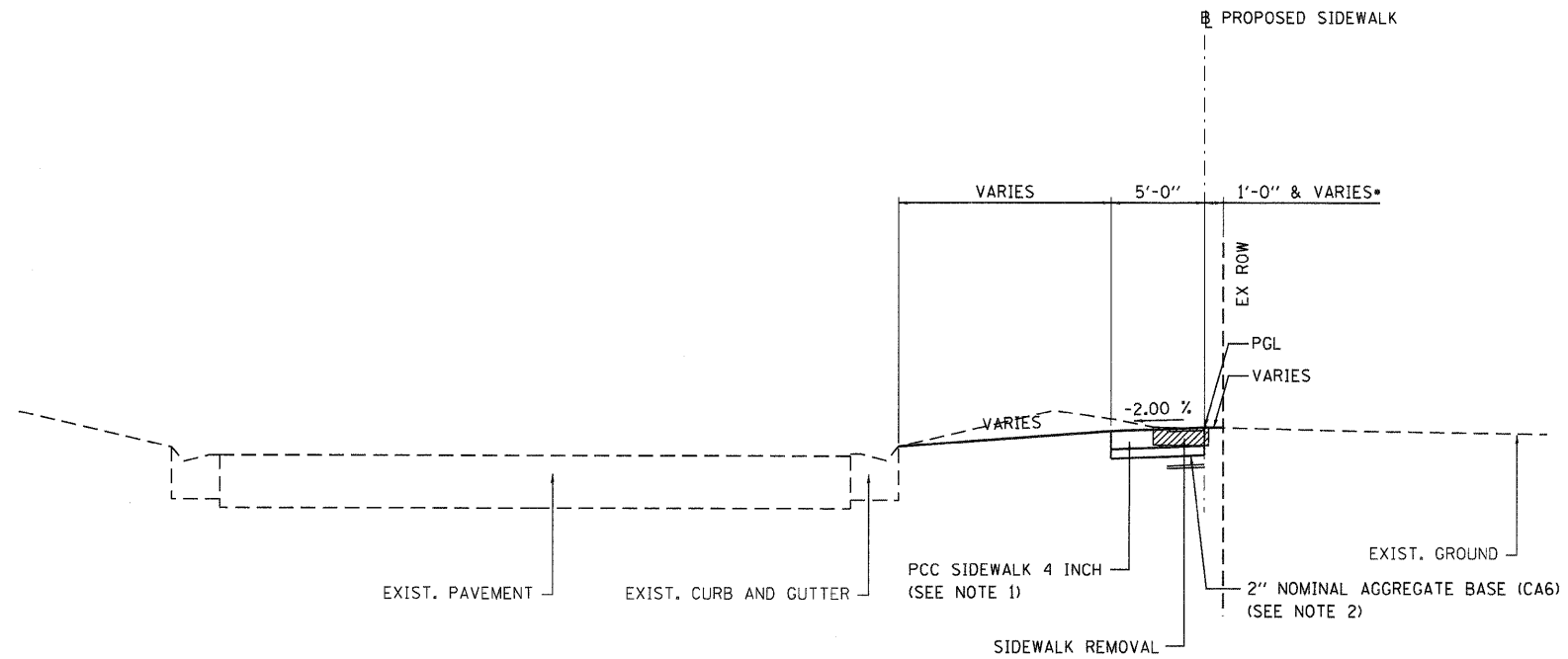
F.A.X. RTE.	SECTION	COUNTY	TOTAL SHEETS	SHEET NO.
XXX	10-00015-00-SW	SANGAMON	22	2
CONTRACT NO.			93576	
ILLINOIS FED. AID PROJECT				

CODE NUMBER	DESCRIPTION	UNIT	TOTAL QUANTITY
20101100	TREE TRUNK PROTECTION	EACH	7
20101200	TREE ROOT PRUNING	EACH	7
20200100	EARTH EXCAVATION	CU YD	197
28000400	PERIMETER EROSION BARRIER	FOOT	482
40200800	AGGREGATE SURFACE COURSE, TYPE B	TON	12
42300200	PORTLAND CEMENT CONCRETE DRIVEWAY PAVEMENT, 6 INCH	SQ YD	247
42400100	PORTLAND CEMENT CONCRETE SIDEWALK 4 INCH	SQ FT	13,735
42400300	PORTLAND CEMENT CONCRETE SIDEWALK 6 INCH	SQ FT	1,010
42400800	DETECTABLE WARNINGS	SQ FT	290
44000200	DRIVEWAY PAVEMENT REMOVAL	SQ YD	265
44000500	COMBINATION CURB AND GUTTER REMOVAL	FOOT	70
44000600	SIDEWALK REMOVAL	SQ FT	10,276
60255500	MANHOLES TO BE ADJUSTED	EACH	1
60600605	CONCRETE CURB, TYPE B	FOOT	394
60604400	COMBINATION CONCRETE CURB AND GUTTER, TYPE B-6.18	FOOT	70
67100100	MOBILIZATION	L SUM	1
72000100	SIGN PANEL - TYPE 1	SQ FT	6
72900100	METAL POST - TYPE A	FOOT	30
Δ *	88000105 FLASHING BEACON INSTALLATION	EACH	2
*	Z0013798 CONSTRUCTION LAYOUT	L SUM	1
*	X7010216 TRAFFIC CONTROL AND PROTECTION, (SPECIAL)	L SUM	1
*	XX007001 ROOT BARRIER	EACH	7

Δ SPECIALTY ITEMS

* SPECIAL PROVISION

CONSTRUCTION TYPE CODE: 0021

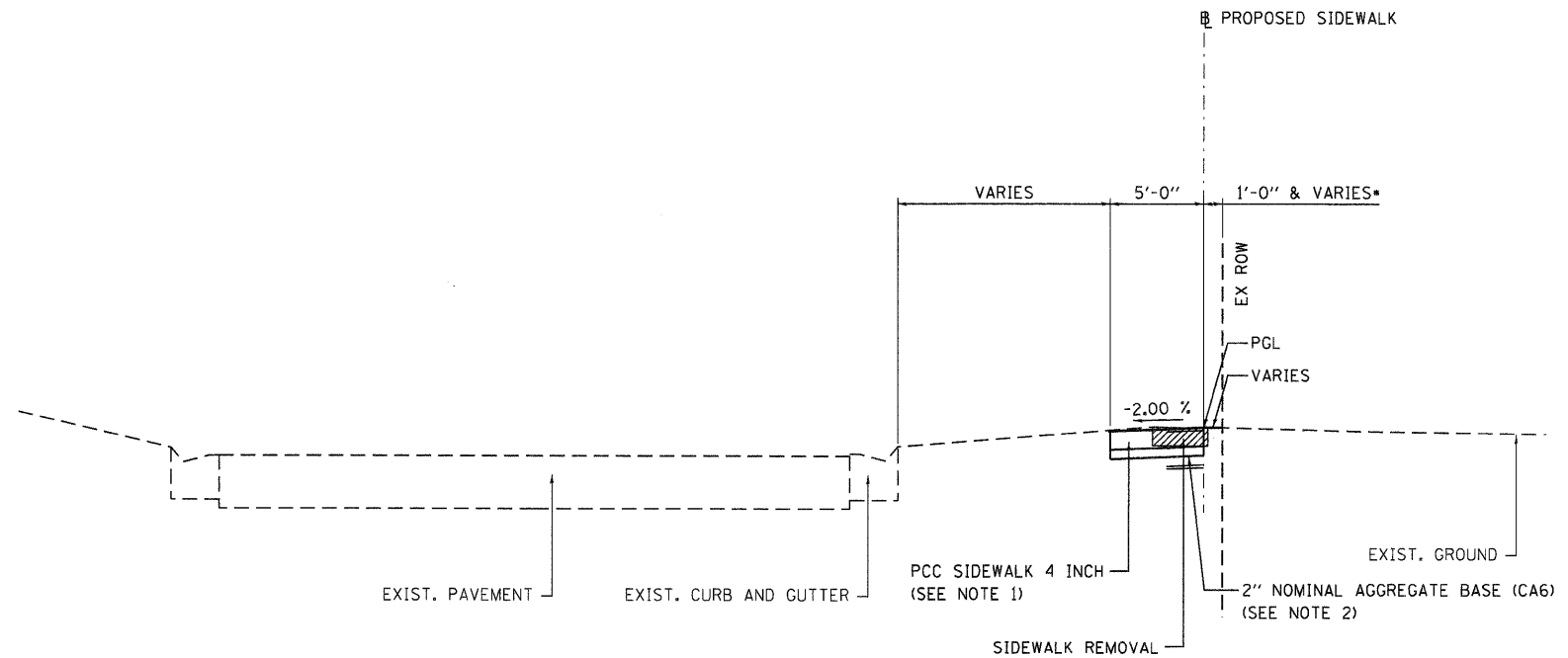


NOTES:

1. PCC SIDEWALK 6 INCH THROUGH ALLEYS AND DRIVEWAYS. SEE SCHEDULES FOR LOCATIONS.
2. AGGREGATE BASE SHALL NOT BE PAID FOR SEPARATELY, BUT SHALL BE INCLUDED IN THE COST FOR PORTLAND CEMENT CONCRETE SIDEWALK 4 INCH.

PROPOSED TYPICAL SECTION

STA. 12+00.00 TO STA. 14+50
 STA. 16+25.00 TO STA. 18+00



PROPOSED TYPICAL SECTION

STA. 11+72.00 TO STA. 12+00.00
 STA. 14+50.00 TO STA. 16+25.00
 STA. 18+00.00 TO STA. 39+89.79
 STA. 200+00.00 TO STA. 204+17.63

- 1'-0" AT STA. 11+72.00
- 1'-0" AT STA. 13+92.78
- 1'-3" AT STA. 14+16.70
- 1'-9" AT STA. 15+13.21
- 1'-0" AT STA. 18+56.63
- 1'-0" AT STA. 39+89.29
- 1'-0" AT STA. 200+00.00
- 1'-0" AT STA. 200+58.49
- 2'-0" AT STA. 202+39.05
- 3'-0" AT STA. 204+14.88
- 3'-0" AT STA. 204+17.63

LOCATION		LENGTH	WIDTH	AREA	42400100	42400300
STATION					PORTLAND CONCRETE CEMENT SIDEWALK 4 INCH	PORTLAND CONCRETE CEMENT SIDEWALK 6 INCH
FROM	TO	(FOOT)	(FOOT)	(SQ FT)	(SQ FT)	(SQ FT)
10+43.54	10+53.60	7.53	7.6		58	
10+82.00	10+87.00	5	5		25	
11+20.70	11+43.40			369	41	
11+72.07	12+65.80	94	5		469	
12+65.80	12+75.80	10	5			50
12+75.80	13+92.78	117	5		585	
14+16.65	15+13.21	102	5		508	
15+13.21	16+14.90	102	5		509	
16+23.50	16+71.85	48	5		242	
16+71.85	16+80.55	9	5			44
16+80.55	16+93.45	13	5		65	
17+03.35	18+54.27	151	5		755	
18+94.71	20+68.75	174	5		871	
20+83.65	22+55.21	172	5		858	
22+95.31	23+74.75	79	5		398	
23+82.95	24+13.95	31	5		155	
24+37.85	24+70.45	33	5		163	
24+70.45	24+80.35	10	5			50
24+80.35	26+55.22	175	5		875	
26+37.81	26+41.71	4	3.9		16	
26+96.07	27+78.90	83	5		415	
27+78.90	27+86.90	8	5			40
27+86.90	28+44.65	58	5		289	
28+61.95	28+69.60	8	5		39	
28+69.60	28+78.80	9	5			47
28+78.80	30+54.37	176	5		878	
30+36.86	30+40.89	4	4		17	
30+37.35	30+40.90	4	3.5		13	
30+97.14	31+13.81	17	5		84	
31+13.81	31+34.54	16	5		79	
31+73.38	31+91.89	19	5		93	
31+91.89	32+81.25	89	5		447	
32+92.75	33+68.40	76	5		379	
33+76.60	35+65.50	189	5		945	
35+96.89	36+87.19	90	5		452	
36+99.13	37+82.45	83	5		417	
36+87.19	37+90.35	103	5			516
37+90.35	38+78.50	88	5		441	
38+78.50	38+95.70	17	5			86
38+95.70	39+89.79	94	5		471	
200+05.00	200+19.00	14	5		70	
200+60.27	202+38.55	178	5		892	
202+38.55	202+59.95	21	5			108
202+59.95	203+20.80	61	5		305	
203+20.80	203+34.60	14	5			69
203+34.60	204+17.63	83	5		416	
TOTAL					13,735	1,010

LOCATION		LENGTH	WIDTH	AREA	44000600
STATION					SIDEWALK REMOVAL
FROM	TO	(FOOT)	(FOOT)	(SQ FT)	(SQ FT)
10+43.54	10+53.60	7.53	7.6		58
10+82.00	10+87.00	5	5		25
11+20.70	11+43.40			265	265
11+72.07	12+45.00	73	5		365
12+45.00	13+92.75	148	2.7		399
14+16.65	15+13.21	102	2.9		295
15+13.21	16+14.90	102	3.7		377
16+23.50	16+93.45	70	3.9		273
17+03.35	18+54.27	151	3.8		574
18+94.71	20+68.75	174	3.4		592
20+83.65	22+55.21	172	3.8		652
22+95.31	23+74.75	79	3.5		279
23+82.95	24+13.95	31	3.3		103
24+37.85	26+55.22	217	3.4		740
26+37.81	26+41.71	4	3.9		16
26+96.07	28+44.65	149	3.4		506
28+61.95	30+54.37	192	3.5		674
30+36.86	30+40.89	4	4		17
30+37.35	30+40.90	4	3.5		13
30+97.14	31+13.81	17	3.3		56
31+13.81	31+34.54	16	3.3		52
31+73.38	31+91.89	19	4		75
31+91.89	32+81.25	89	3.9		349
32+92.75	33+68.40	76	3.9		296
33+76.60	35+65.50	189	3.9		737
35+96.89	39+70.52	374	3.5		1,308
200+05.00	200+19.00	14	4.5		63
200+60.27	203+20.80	261	3.2		834
203+34.60	204+17.63	83	3.4		283
TOTAL					10,276

LOCATION		OFFSET	28000400
STATION			PERIMETER EROSION BARRIER
FROM	TO		(FOOT)
12+00.00	12+65.00	LT	85
12+75.00	13+93.00	LT	138
14+17.00	14+50.00	LT	53
16+32.00	16+70.00	LT	58
16+82.00	16+93.00	LT	31
17+03.00	18+00.00	LT	117
TOTAL			482

LOCATION	60255500
	MANHOLES TO BE ADJUSTED (EACH)
STA. 39+80	1
TOTAL	1

LOCATION	88000105
	FLASHING BEACON INSTALLATION (EACH)
STA. 11+39, 20' LT.	1
STA. 11+75, 6' RT.	1
TOTAL	2

LOCATION			44000500	60600605	60604400
			COMBINATION CURB AND GUTTER REMOVAL	CONCRETE CURB, TYPE B	COMBINATION CONCRETE CURB AND GUTTER, TYPE B-6.18
STATION			(FOOT)	(FOOT)	(FOOT)
FROM	TO	OFFSET			
18+54.27			5		5
18+94.71			5		5
22+55.21			5		5
22+95.31			5		5
26+55.22			5		5
26+96.07			5		5
30+54.37			5		5
30+97.14			5		5
31+32.46			5		5
31+73.38			5		5
35+65.50			5		5
35+96.89			5		5
200+19.00			5		5
200+60.27			5		5
18+42.00	18+54.27	LT		13	
18+42.00	18+54.27	BL		13	
18+94.71	19+10.00	LT		16	
18+94.71	19+10.00	BL		16	
22+40.86	22+55.21	LT		15	
22+40.86	22+55.21	BL		15	
22+95.31	23+10.00	LT		16	
22+95.31	23+10.00	BL		16	
26+42.00	26+55.22	LT		14	
26+42.00	26+55.22	BL		14	
26+96.07	27+08.00	LT		13	
26+96.07	27+08.00	BL		13	
30+41.00	30+54.37	LT		14	
30+41.00	30+54.37	BL		14	
30+97.14	31+08.81	LT		13	
30+97.14	31+08.81	BL		13	
31+18.81	31+32.46	LT		15	
31+18.81	31+32.46	BL		15	
31+73.38	31+86.89	LT		15	
31+73.38	31+86.89	BL		15	
35+52.00	35+65.50	LT		15	
35+52.00	35+65.50	BL		15	
35+96.89	36+06.00	LT		10	
35+96.89	36+06.00	BL		10	
200+05.00	200+19.00	LT		15	
200+05.00	200+19.00	BL		15	
200+60.27	200+72.50	LT		13	
200+60.27	200+72.50	BL		13	
TOTAL			70	394	70

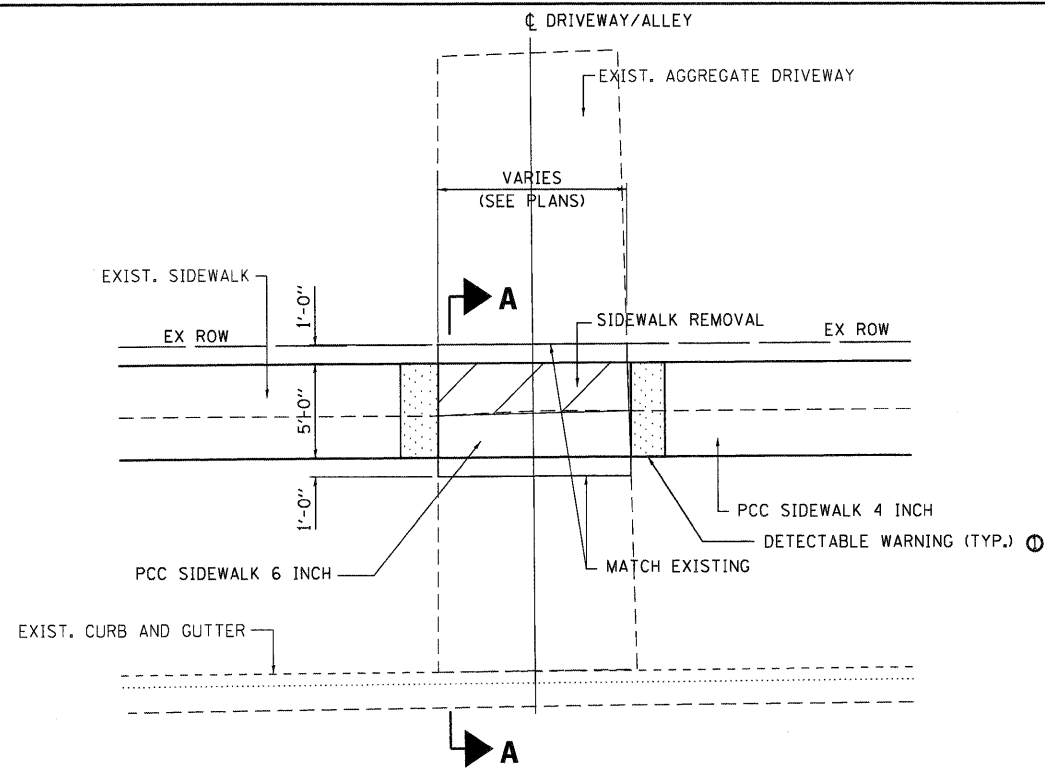
LOCATION	LENGTH	WIDTH	AREA	THICKNESS	RATE	40200800	42300200	44000200
						AGGREGATE SURFACE COURSE, TYPE B	PORTLAND CONCRETE CEMENT DRIVEWAY PAVEMENT, 6 INCH	DRIVEWAY PAVEMENT REMOVAL
STATION	(FOOT)	(FOOT)	(SQ FT)	(INCHES)	(TON/CU YD)	(TON)	(SQ YD)	(SQ YD)
FROM								
12+70.80	10.00	2		8	2.05	2		
14+04.70	14.60	23.9					39	39
16+19.20	17.20	9.15					18	18
16+76.20	9.88	2		8	2.05	2		
16+98.40	17.40	9.8					19	19
20+76.20	17.40	19.1					37	37
20+76.20	1.00	14.9					2	2
23+78.90	19.60	7.85						18
24+25.90	19.70	23.9					53	53
24+75.40	9.50	2		8	2.05	1		
27+82.90	8.00	2		8	2.05	1		
28+53.30			385				43	43
28+74.20	9.20	2		8	2.05	1		
32+87.00	12.10	11.5					16	16
33+72.50	11.90	8.5					12	12
37+86.40	8.00	2		8	2.05	1		
38+87.10	17.20	2		8	2.05	2		
202+45.50	18.90	2		8	2.05	2		
203+27.70	5	13.1					8	8
TOTAL						12	247	265

LOCATION	OFFSET	20101100	20101200	XX007001
		TREE TRUNK PROTECTION	TREE ROOT PRUNING	ROOT BARRIER
		(EACH)	(EACH)	(EACH)
STA. 12+95	8' LT.	1	1	1
STA. 13+38	8' LT.	1	1	1
STA. 13+85	8' LT.	1	1	1
STA. 14+23	9' LT.	1	1	1
STA. 14+57	8' LT.	1	1	1
STA. 17+16	10' LT.	1	1	1
STA. 17+46	10' LT.	1	1	1
TOTALS		7	7	7

LOCATION	42400800 DETECTABLE WARNINGS
	(SQ FT)
STA. 11+42.40	10
STA. 11+75.40	10
STA. 16+70.85	10
STA. 16+81.55	10
STA. 18+53.27	10
STA. 18+95.71	10
STA. 20+67.75	10
STA. 20+84.65	10
STA. 22+54.21	10
STA. 22+96.31	10
STA. 24+69.95	10
STA. 24+80.85	10
STA. 26+54.22	10
STA. 26+97.07	10
STA. 28+68.60	10
STA. 28+79.80	10
STA. 30+53.37	10
STA. 30+98.14	10
STA. 31+31.46	10
STA. 31+74.38	10
STA. 33+67.40	10
STA. 33+77.60	10
STA. 35+64.50	10
STA. 35+97.89	10
STA. 37+81.45	10
STA. 37+91.35	10
STA. 39+87.00	10
STA. 200+18.00	10
STA. 200+61.27	10
TOTAL	290

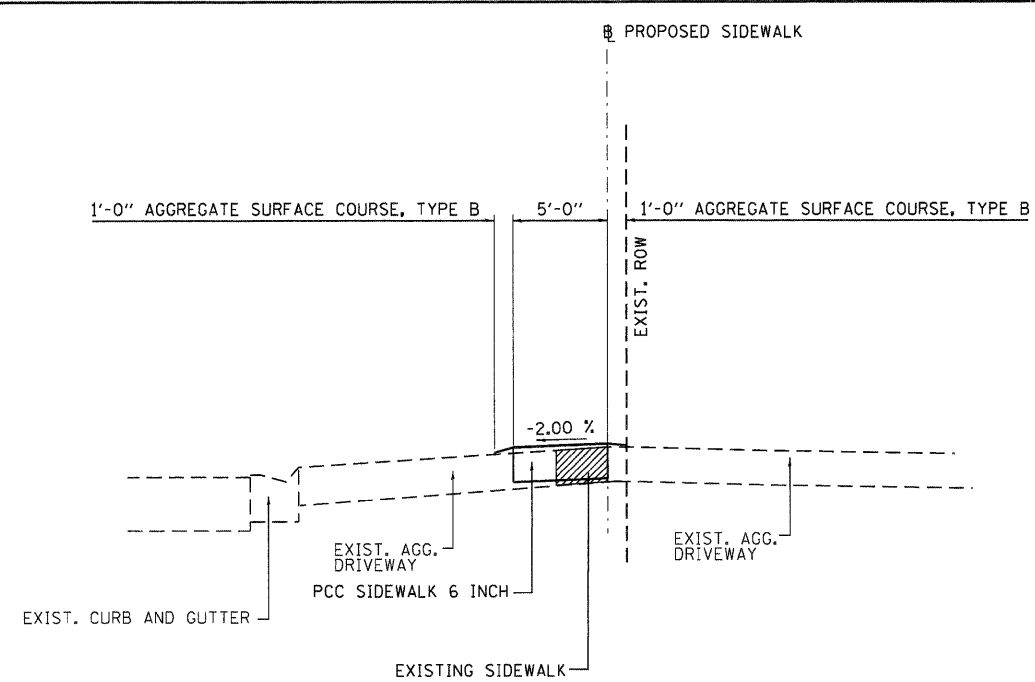
LOCATION	72000100		72900100
	SIGN PANEL - TYPE 1		METAL POST -
	ADA WHEELCHAIR ACCESSIBLE SYMBOL SIGN - RIGHT ARROW (12 X 18)	ADA WHEELCHAIR ACCESSIBLE SYMBOL SIGN - LEFT ARROW (12 X 18)	TYPE A
	(SQ FT)		(FOOT)
STA. 10+10, 10' LT.	2		10
STA. 11+35, 13' LT.		2	10
STA. 31+85, 9' LT.		2	10
TOTAL	2	4	30

LOCATION	20200100			
	EARTH EXCAVATION	EARTH EXCAVATION ADJUSTED FOR SHRINKAGE	EMBANKMENT	EARTHWORK BALANCE WASTE(+) AND SHORTAGE (-)
	(CU YD)	(CU YD)	(CU YD)	(CU YD)
PCC SIDEWALK	45	34		34
STA. 11+72 TO STA. 39+89.79				
STA. 200+00 TO STA. 204+17.63				
GRADING AND SHAPING BOULEVARD	152	114		114
PCC SIDEWALK			9	-9
STA. 11+20.70 TO STA. 11+43.40				
TOTAL	197	148	9	139



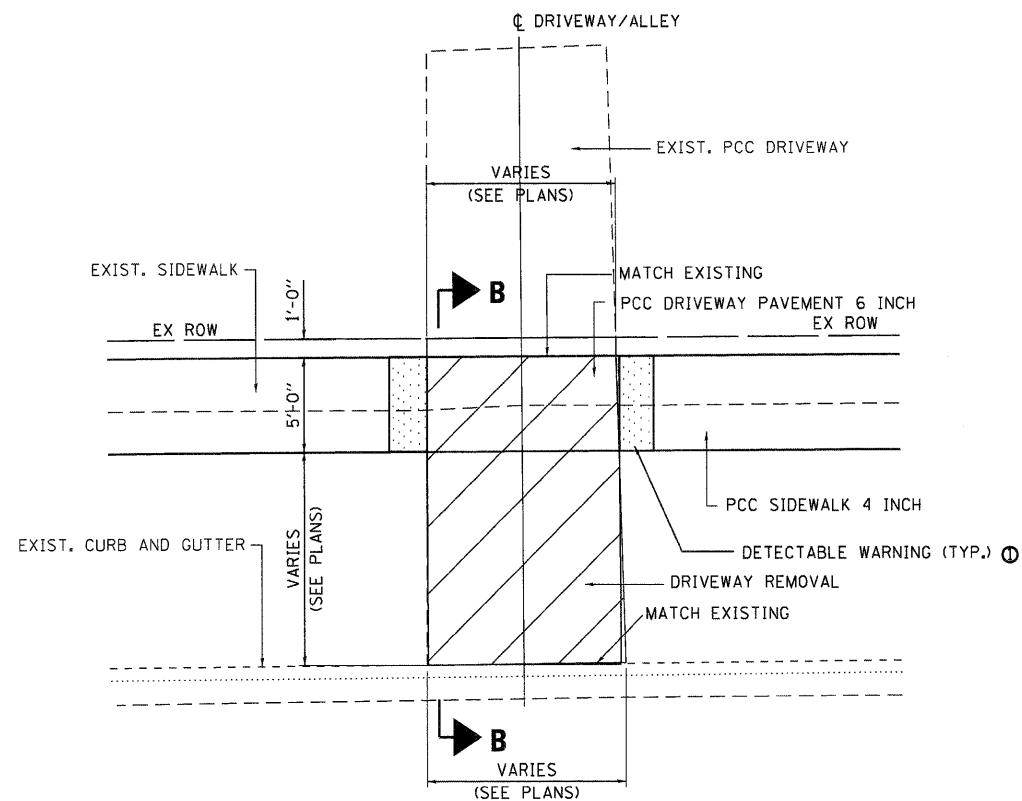
TYPICAL AGGREGATE DRIVEWAY/ALLEY PLAN

STA. 12+70.80 STA. 28+74.20
 STA. 16+76.20 STA. 37+86.40
 STA. 24+75.40 STA. 38+87.10
 STA. 27+82.90 STA. 202+45.50



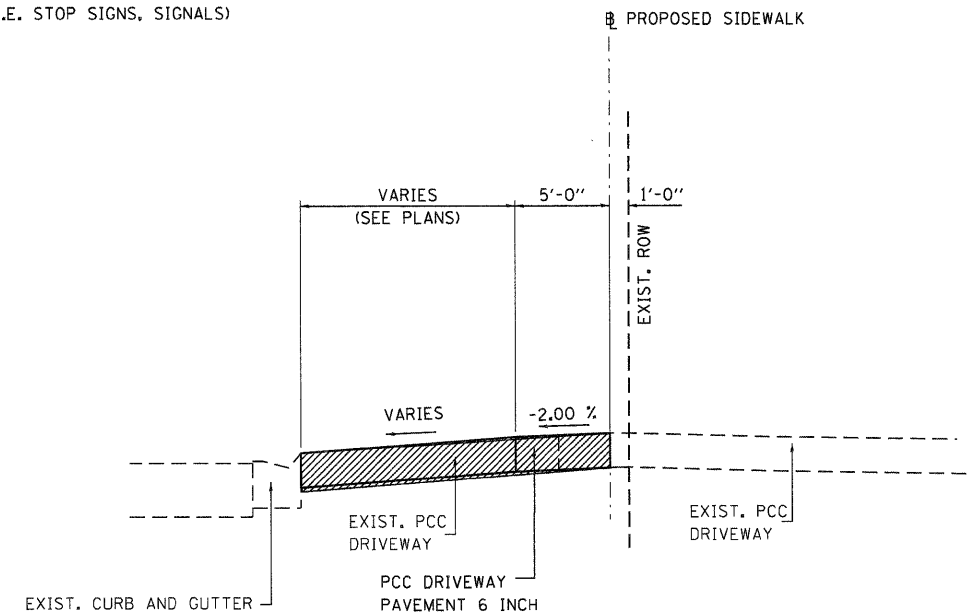
SECTION A-A

Ⓞ DETECTABLE WARNINGS SHALL ONLY BE INSTALLED AT ENTRANCES/ALLEYS WITH PERMANENT TRAFFIC CONTROL DEVICES (I.E. STOP SIGNS, SIGNALS)



TYPICAL PCC DRIVEWAY/ALLEY PLAN

STA. 14+04.70 STA. 20+76.30 STA. 32+87.00
 STA. 16+19.20 STA. 24+25.90 STA. 33+72.50
 STA. 16+98.40 STA. 28+53.30 STA. 203+27.70



SECTION B-B

• REMOVE AND REPLACE EXISTING DRIVEWAY TO THE EXISTING RIGHT OF WAY LINE

WHKS & CO.
 ENGINEERING
 7018 KINGSMILL CT.,
 SPRINGFIELD, IL
 (217) 483-9457
 DESIGN FIRM #184001036

USER NAME = bmatshies
 FILE NAME = 7524-DETAILS.SHT.dgn
 PLOT SCALE = 5.0000' / IN.
 PLOT DATE = 3/22/2012

DESIGNED -
 CHECKED -
 DRAWN -
 CHECKED -

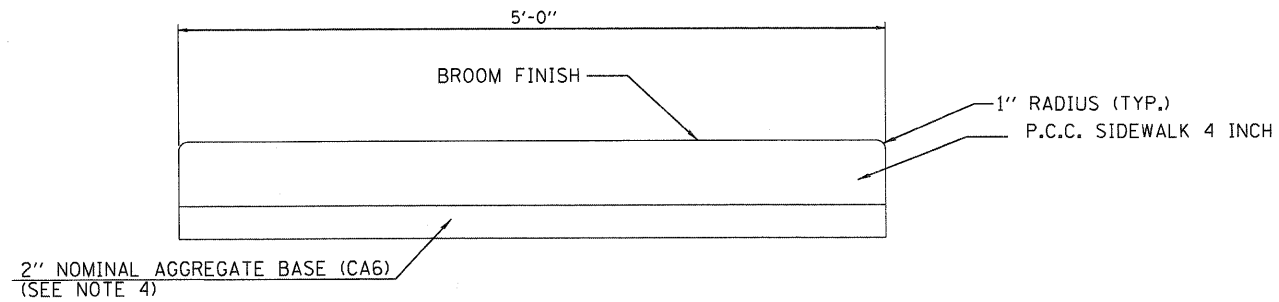
REVISED
 REVISED
 REVISED
 REVISED

**STATE OF ILLINOIS
 DEPARTMENT OF TRANSPORTATION**

**DRIVEWAY AND ALLEY DETAILS
 ILLIOPOLIS SIDEWALK IMPROVEMENT**

SCALE: 1" = 5' SHEET NO. 1 OF 1 SHEETS STA. TO STA.

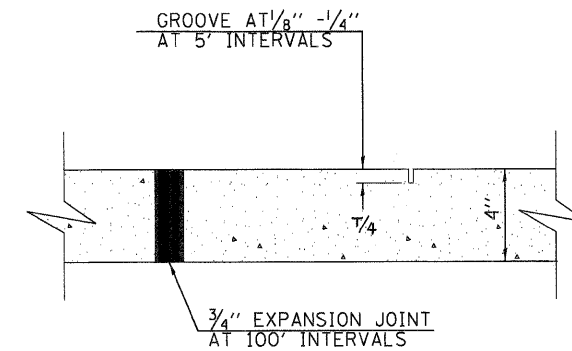
F.A.X. RTE.	SECTION	COUNTY	TOTAL SHEETS	SHEET NO.
XXX	10-00015-00-SW	SANGAMON	22	8
				CONTRACT NO.
				ILLINOIS FED. AID PROJECT 93576



TYPICAL SIDEWALK DETAIL
(NOT TO SCALE)

NOTES:

1. USE 1/2" PREMOULDED JOINT FILLER AT SIDEWALK AND STRUCTURE INTERFACES. SIDEWALK SHALL CONFORM TO SECTION 424 - PORTLAND CEMENT CONCRETE SIDEWALK OF THE ILLINOIS STANDARD SPECIFICATIONS FOR ROAD AND BRIDGE CONSTRUCTION.
2. REQUIRED MIN. COMPRESSIVE STRENGTH OF CONC. = 3500 PSI @ 14 DAYS
3. CONTRACTOR MUST SAWCUT EXISTING SIDEWALK AT EXISTING TOOL JOINT
4. AGGREGATE BASE SHALL NOT BE PAID FOR SEPARATELY, BUT SHALL BE INCLUDED IN THE COST FOR PORTLAND CEMENT CONCRETE SIDEWALK 4 INCH.

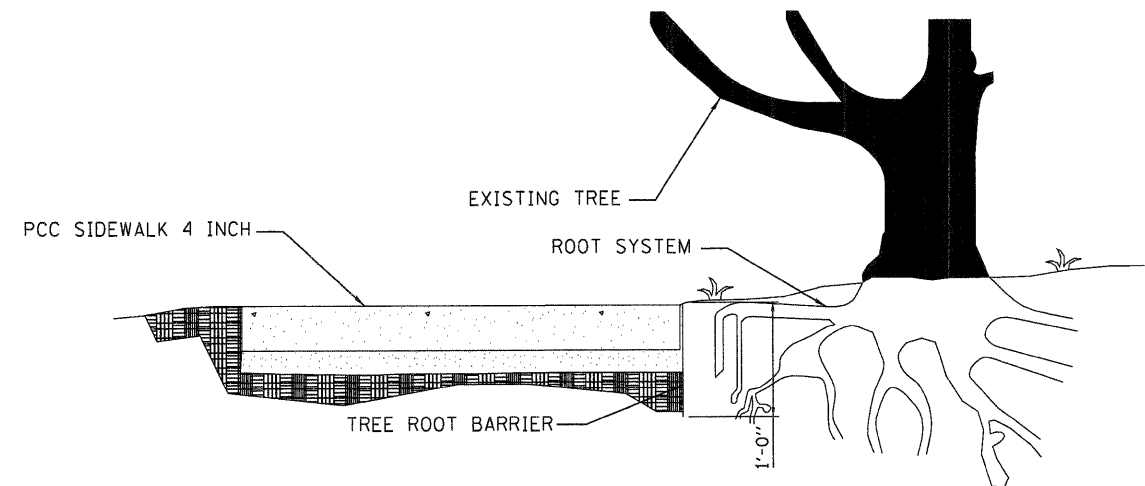


TYPICAL SIDEWALK JOINT DETAIL

APPLIES TO NEW SIDEWALK & SIDEWALK REPLACEMENT

NOTES:

ONE-HALF INCH EXPANSION JOINT TO BE PLACED BETWEEN THE PROPOSED SIDEWALK AND ANY EXISTING STRUCTURE, DRIVEWAY, CURB & GUTTER, ETC.



ROOT BARRIER DETAIL

(SEE SCHEDULE OF QUANTITIES FOR LOCATIONS)

WHKS & CO.
ENGINEERING
7018 KINGSMILL CT.,
SPRINGFIELD, IL
(217) 483-9457
DESIGN FIRM #184001036

USER NAME = bmatthies
FILE NAME = 7524_DETAILS.SHT.dgn
PLOT SCALE = 5.0000' / IN.
PLOT DATE = 3/22/2012

DESIGNED -	REVISED
CHECKED -	REVISED
DRAWN -	REVISED
CHECKED -	REVISED

STATE OF ILLINOIS
DEPARTMENT OF TRANSPORTATION

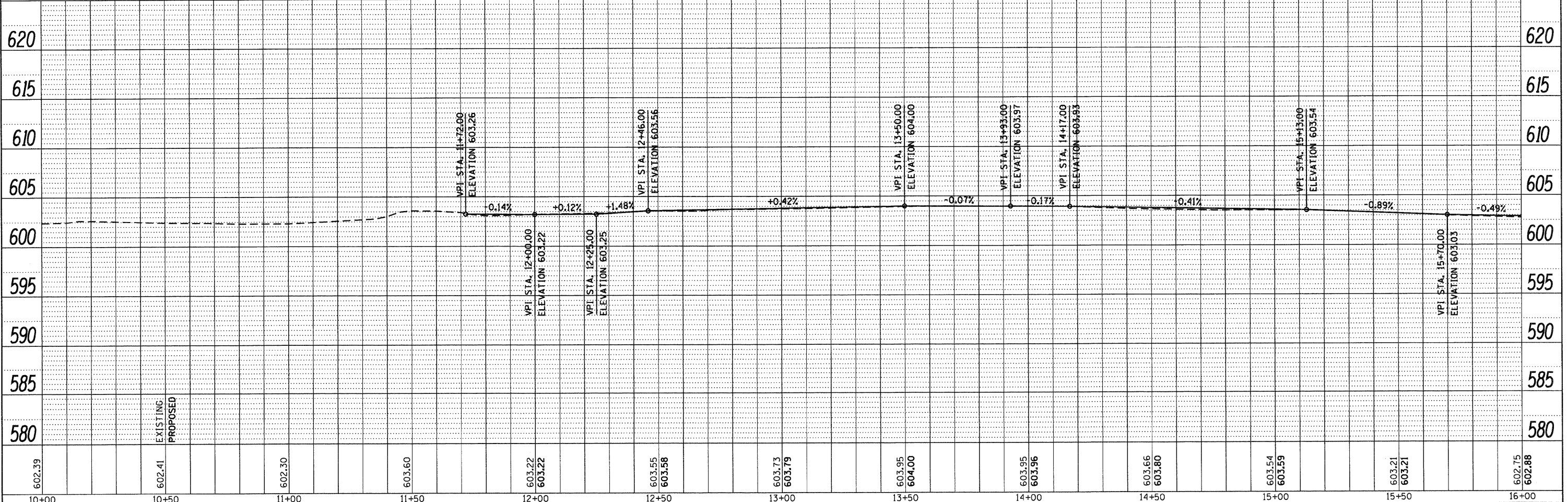
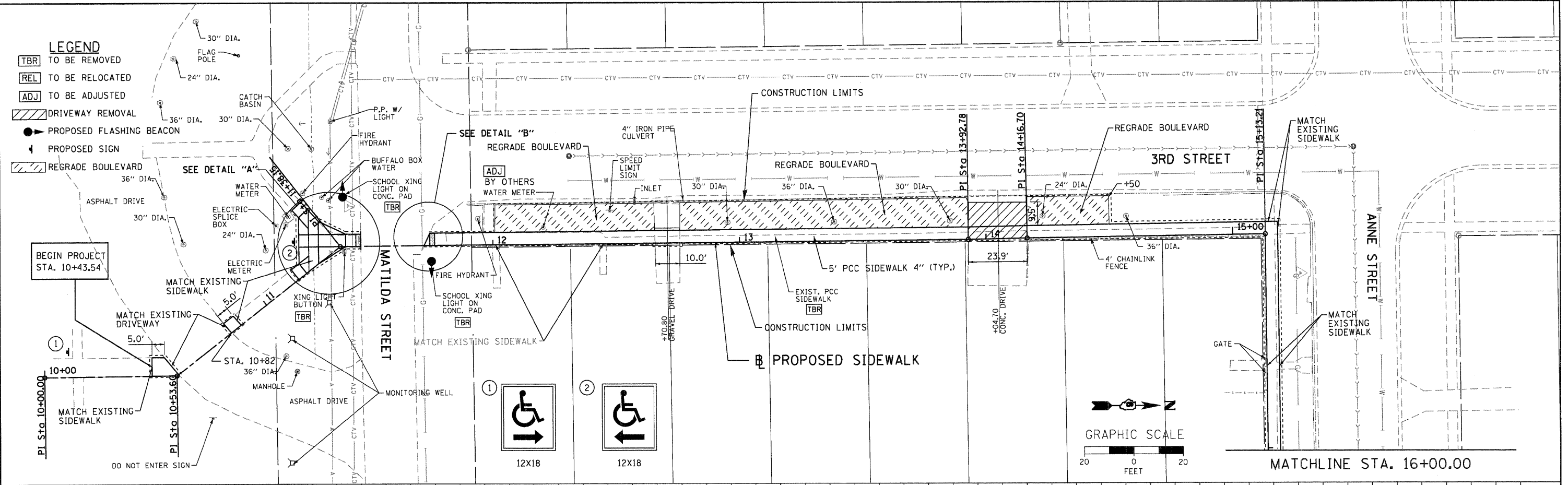
DETAILS
ILLIOPOLIS SIDEWALK IMPROVEMENT

SCALE: NTS SHEET NO. 1 OF 1 SHEETS STA. TO STA.

F.A.X. RTE.	SECTION	COUNTY	TOTAL SHEETS	SHEET NO.
XXX	10-00015-00-SW	SANGAMON	22	9
ILLINOIS FED. AID PROJECT			CONTRACT NO. 93576	

DATE	
BY	
REVIEWED	
PLANNED	
CHECKED	
NOTE BOOK	
NO.	
PLANNED	
CHECKED	
NOTE BOOK	
NO.	

DATE	
BY	
REVIEWED	
PLANNED	
CHECKED	
NOTE BOOK	
NO.	
PLANNED	
CHECKED	
NOTE BOOK	
NO.	



602.39	602.41	602.30	603.60	603.22	603.22	603.55	603.58	603.73	603.79	603.95	604.00	603.95	603.96	603.66	603.80	603.54	603.59	603.21	603.21	602.75	602.88
10+00	10+50	11+00	11+50	12+00	12+50	13+00	13+50	14+00	14+50	15+00	15+50	16+00									

WHKS & co.
 ENGINEERING
 7018 KINGSMILL CT.,
 SPRINGFIELD, IL
 (217) 483-9457
 DESIGN FIRM #184001036

USER NAME = bmatchies
 FILE NAME = 7524_PLNPRF1.SHT.dgn
 PLOT SCALE = 28.0000 / IN.
 PLOT DATE = 3/22/2012

DESIGNED -
 CHECKED -
 DRAWN -
 CHECKED -

REVISED -
 REVISED -
 REVISED -
 REVISED -

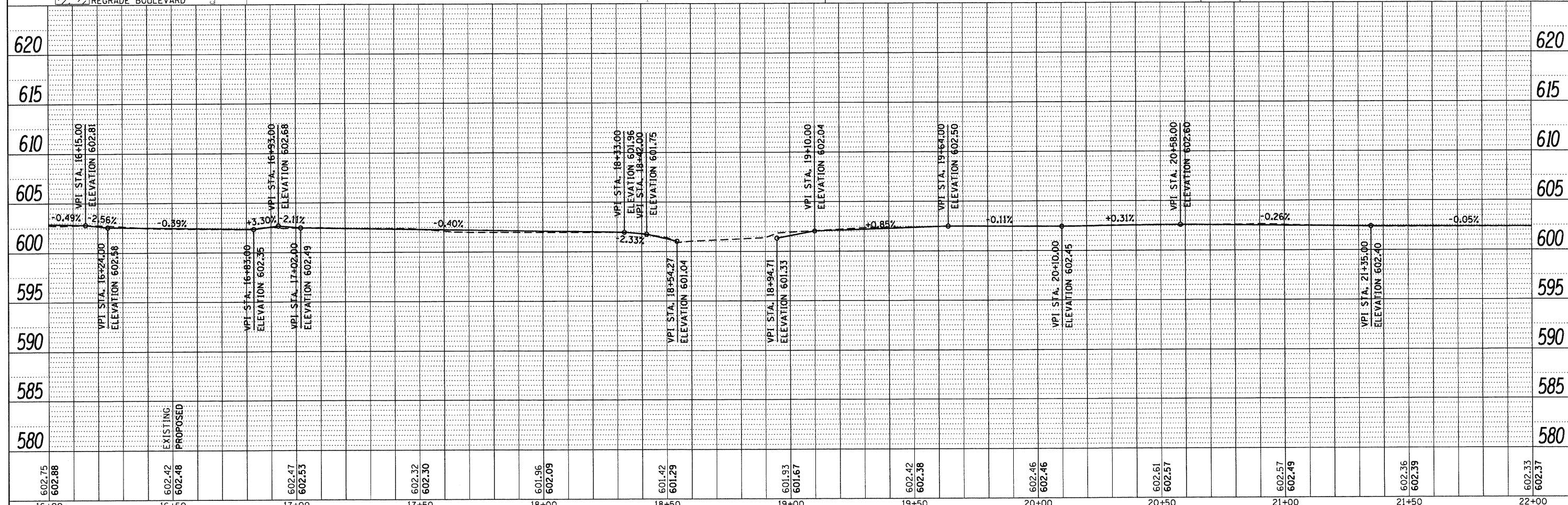
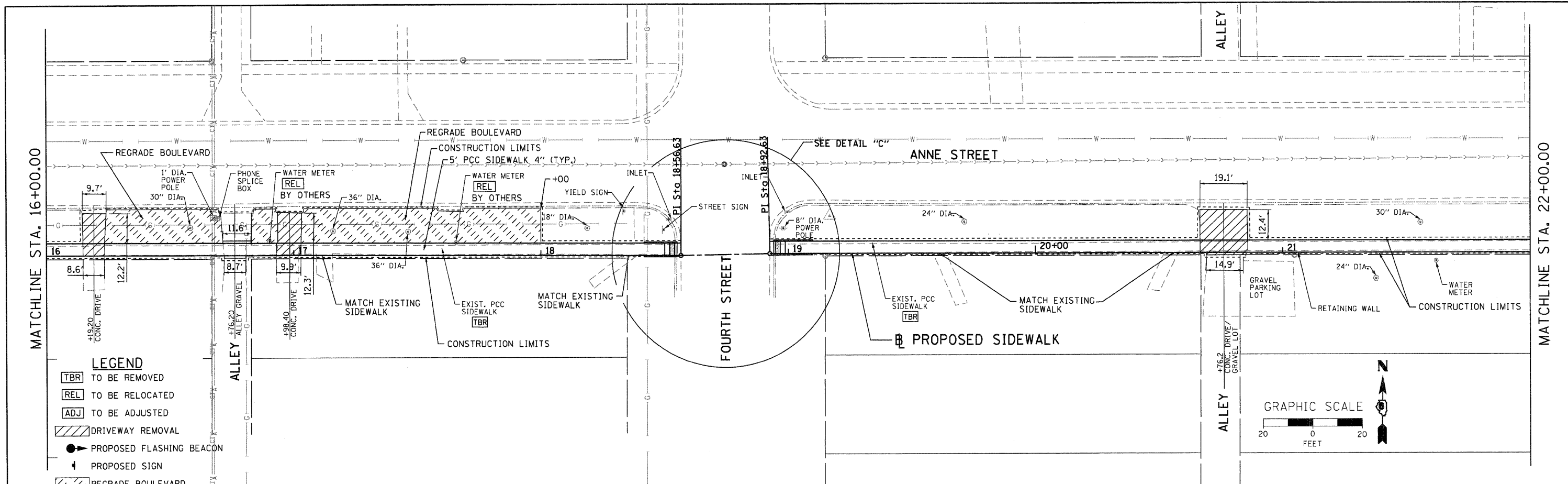
**STATE OF ILLINOIS
 DEPARTMENT OF TRANSPORTATION**

**PLAN AND PROFILE
 ILLIOPOLIS SIDEWALK IMPROVEMENT**
 SCALE: 1" = 20' SHEET NO. 1 OF 6 SHEETS STA. 10+00.00 TO STA. 16+00.00

F.A. RTE.	SECTION	COUNTY	TOTAL SHEETS	SHEET NO.
X	10-00015-00-SW	SANGAMON	22	10
ILLINOIS FED. AID PROJECT			CONTRACT NO. 93316	

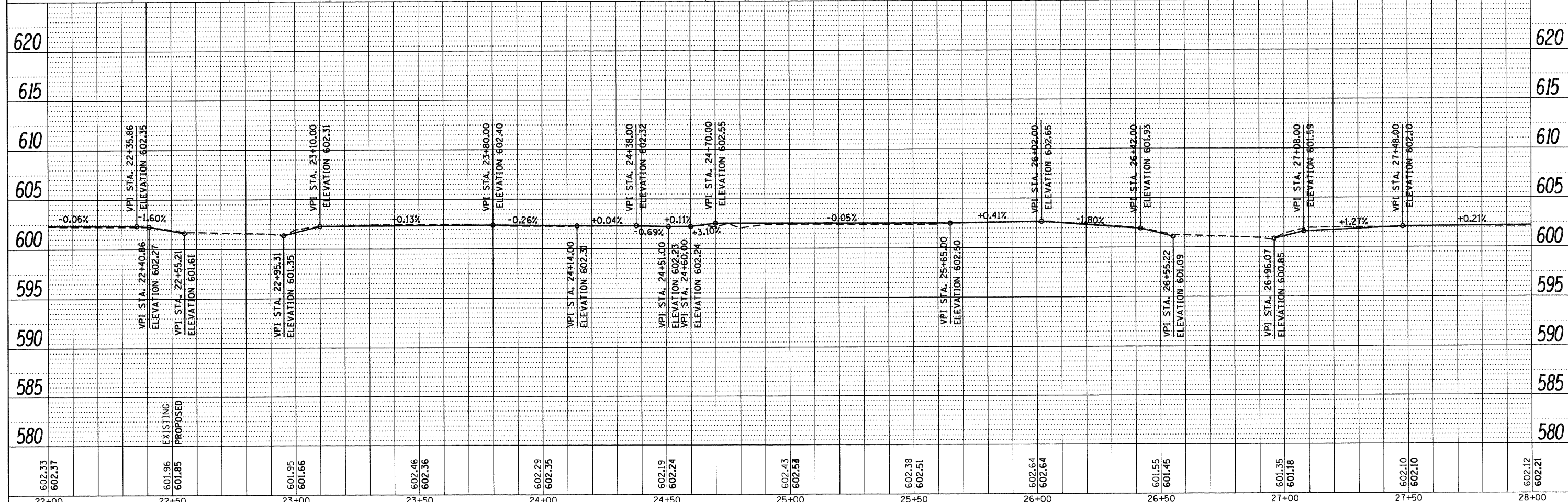
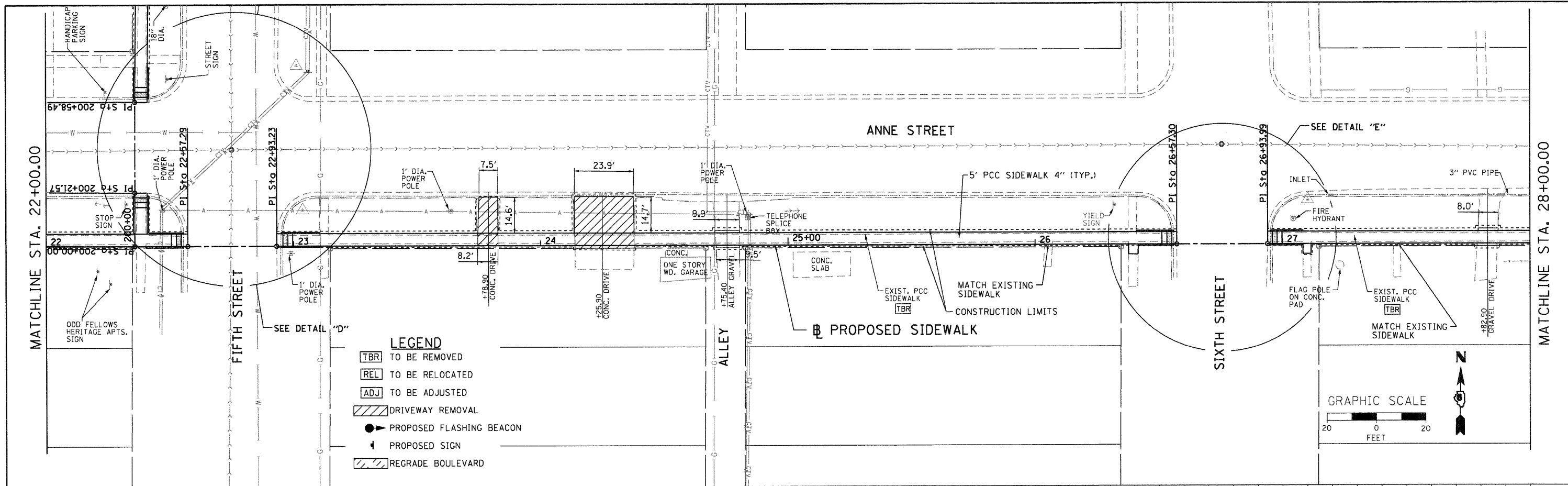
PLAN	REVISION	DATE
NOTE BOOK	CHECKED	
NO.	FILE NAME	

PROFILE	REVISION	DATE
NOTE BOOK	CHECKED	
NO.	FILE NAME	



PLAN	DATE
REVISIONS	BY
NOTED	
ALIGNED	
CHECKED	
FILE NAME	
NO.	

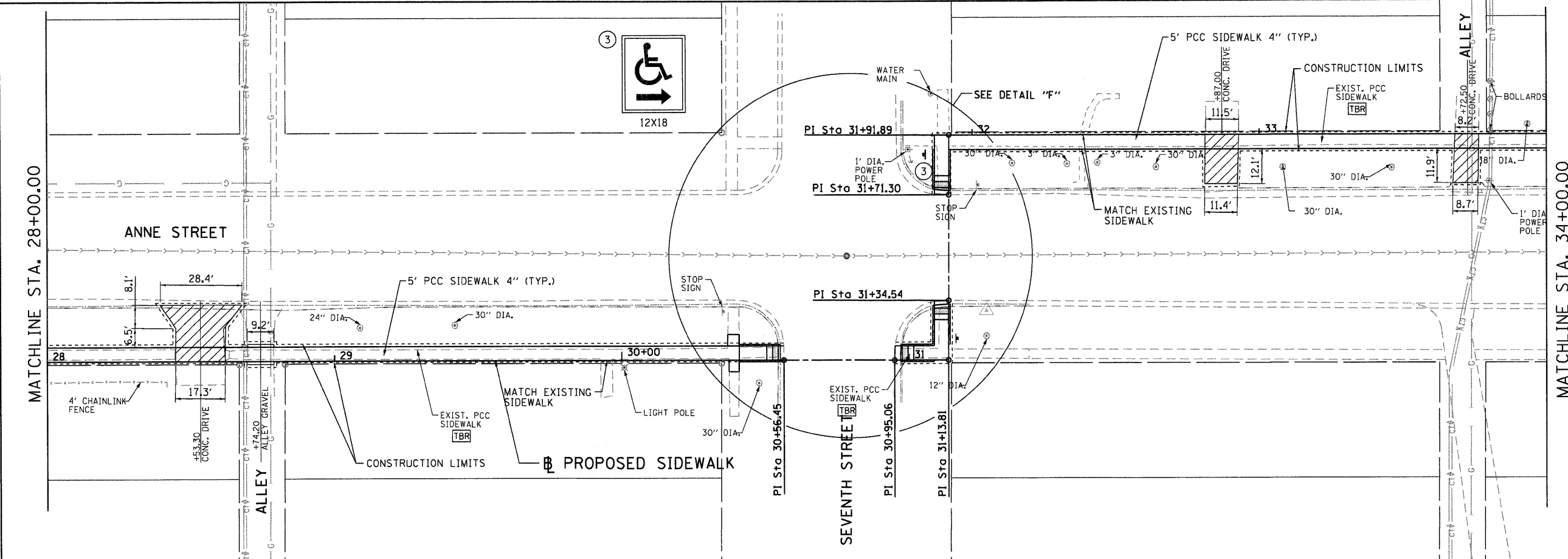
PROFILE	DATE
NOTED	
GRADES CHECKED	
B.M. NOTED	
STRUCTURE NOTATIONS CHKD	
NO.	



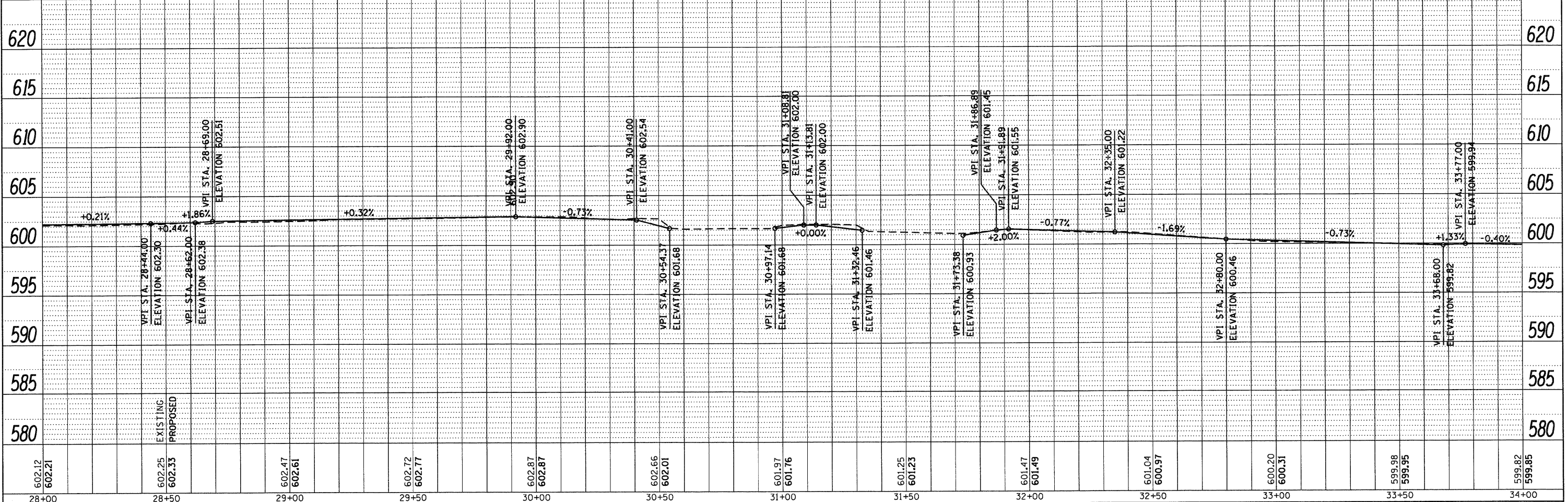
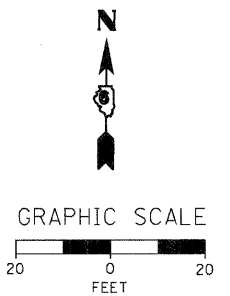
WHKS & co. 7018 KINGSMILL CT., SPRINGFIELD, IL (217) 483-9457 DESIGN FIRM #184001036	USER NAME = bmoethies FILE NAME = 7524_PLNPRF1.SHT.dgn PLOT SCALE = 20.0000' / 1" IN. PLOT DATE = 3/22/2012	DESIGNED - CHECKED - DRAWN - CHECKED -	REVISED REVISED REVISED REVISED	STATE OF ILLINOIS DEPARTMENT OF TRANSPORTATION		PLAN AND PROFILE ILLIOPOLIS SIDEWALK IMPROVEMENT		F.A. RTE. X SECTION 10-00015-00-SW COUNTY SANGAMON ILLINOIS FED. AID PROJECT	TOTAL SHEETS 22 SHEET NO. 12 CONTRACT NO. 93576
	SCALE: 1" = 20' SHEET NO. 3 OF 6 SHEETS STA. 22+00.00 TO STA. 28+00.00								

DATE	
BY	
PLAN	
REVISIONS	
NO.	
DATE	
BY	
NOTE BOOK	
NO.	
DATE	
BY	
NOTE BOOK	
NO.	
DATE	
BY	
NOTE BOOK	
NO.	

DATE	
BY	
PROFILE	
REVISIONS	
NO.	
DATE	
BY	
NOTE BOOK	
NO.	
DATE	
BY	
NOTE BOOK	
NO.	



- LEGEND**
- TBR TO BE REMOVED
 - REL TO BE RELOCATED
 - ADJ TO BE ADJUSTED
 - DRIVEWAY REMOVAL DRIVEWAY REMOVAL
 - PROPOSED FLASHING BEACON
 - + PROPOSED SIGN
 - REGRADE BOULEVARD REGRADE BOULEVARD



602.12 602.21	602.25 602.33	602.47 602.61	602.72 602.77	602.87 602.87	602.66 602.01	601.97 601.76	601.25 601.23	601.47 601.49	601.04 600.97	600.20 600.31	599.98 599.95	599.82 599.85
28+00	28+50	29+00	29+50	30+00	30+50	31+00	31+50	32+00	32+50	33+00	33+50	34+00

WHKS & co.
ENGINEERING DESIGN FIRM #184001036

7018 KINGSMILL CT.,
SPRINGFIELD, IL
(217) 483-9457

STATE OF ILLINOIS
DEPARTMENT OF TRANSPORTATION

PLAN AND PROFILE
ILLIOPOLIS SIDEWALK IMPROVEMENT

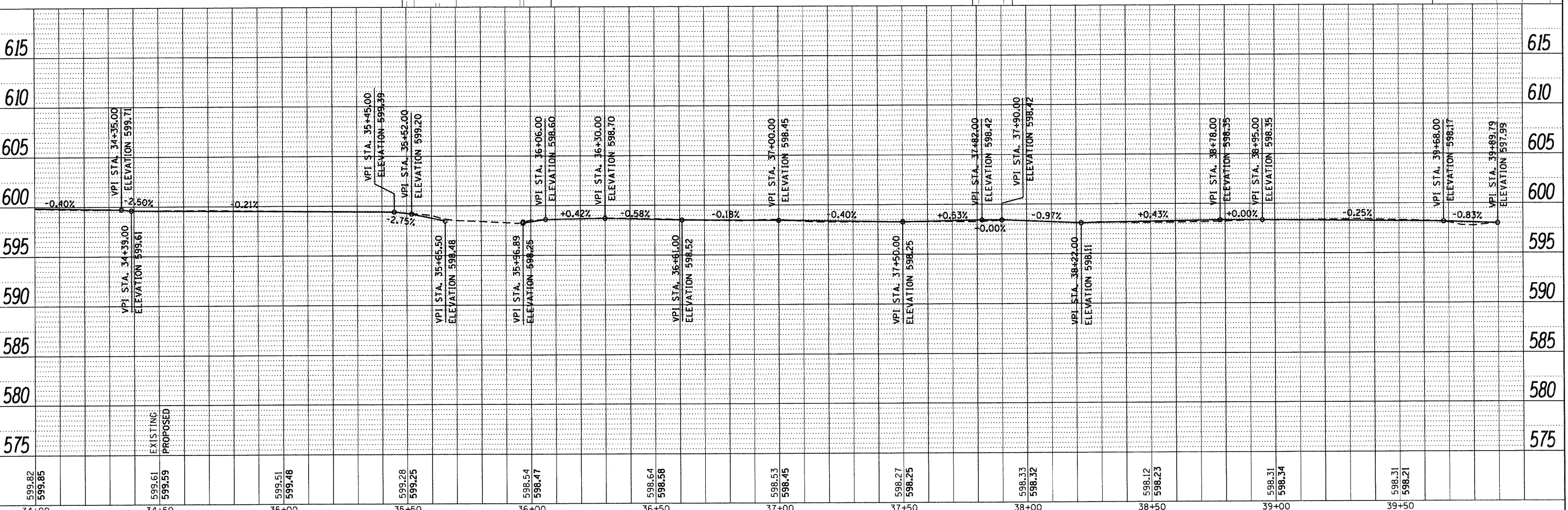
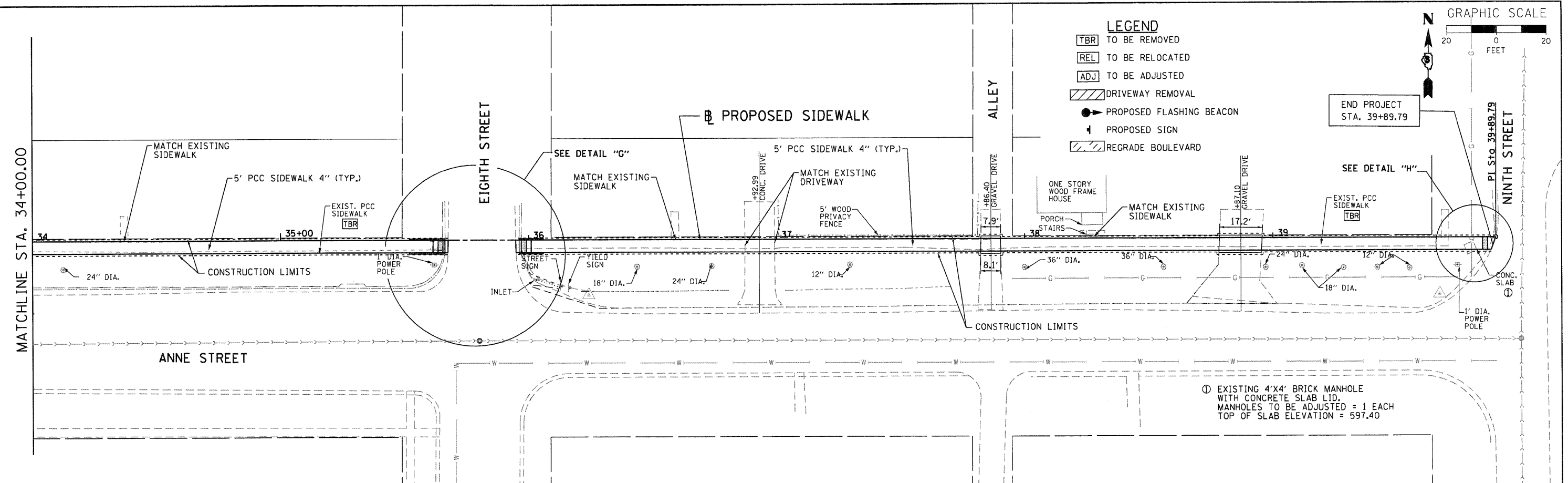
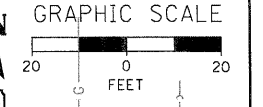
F.A. RTE. X SECTION 10-00015-00-SW COUNTY SANGAMON TOTAL SHEETS 22 SHEET NO. 13 CONTRACT NO. ILLINOIS FED. AID PROJECT 93576

PLAN	DRAWN	DATE
NO.	BY	
CHECKED		
DATE		
FILE NAME		

PROFILE	DRAWN	DATE
NO.	BY	
CHECKED		
DATE		
FILE NAME		

LEGEND

- TBR TO BE REMOVED
- REL TO BE RELOCATED
- ADJ TO BE ADJUSTED
- DRIVEWAY REMOVAL
- PROPOSED FLASHING BEACON
- PROPOSED SIGN
- REGRADE BOULEVARD



599.82 599.85	599.61 599.59	599.51 599.48	599.28 599.25	598.54 598.47	598.64 598.58	598.53 598.45	598.27 598.25	598.33 598.32	598.12 598.23	598.31 598.34	598.31 598.21
34+00	34+50	35+00	35+50	36+00	36+50	37+00	37+50	38+00	38+50	39+00	39+50

WHKS & co.
ENGINEERING
7018 KINGSMILL CT.,
SPRINGFIELD, IL
(217) 483-9457
DESIGN FIRM #184001036

USER NAME = bmoethies
FILE NAME = 7524_PLNPRF1.SHT.dgn
PLOT SCALE = 20.0000' / IN.
PLOT DATE = 3/28/2012

DESIGNED -
CHECKED -
DRAWN -
CHECKED -

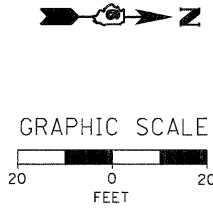
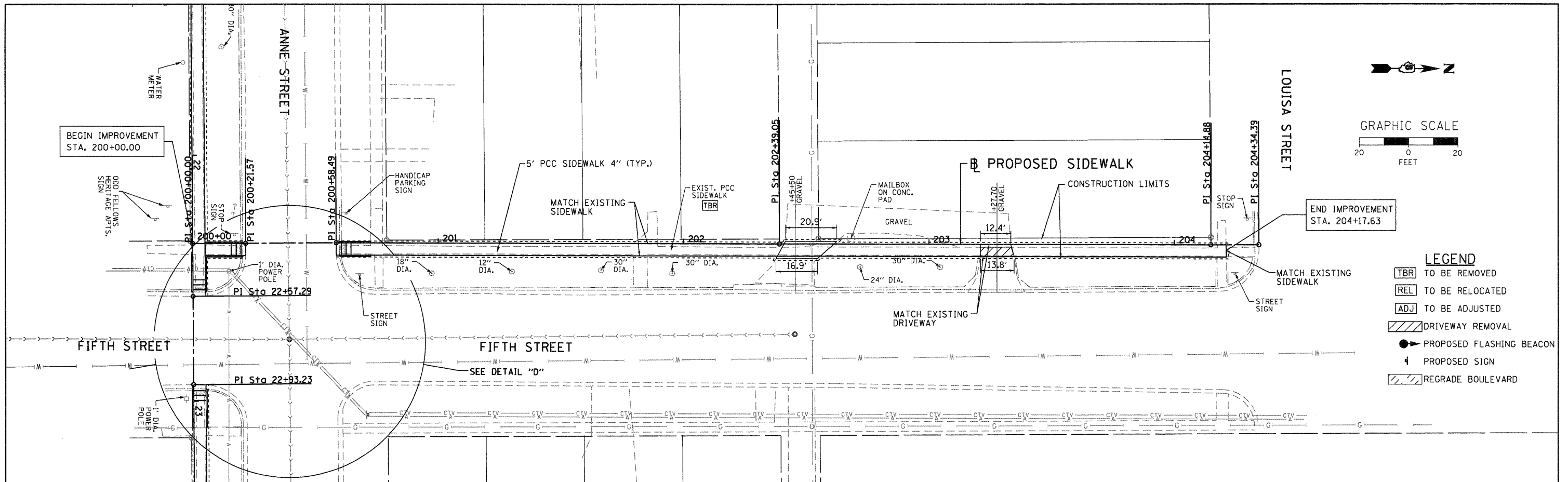
**STATE OF ILLINOIS
DEPARTMENT OF TRANSPORTATION**

**PLAN AND PROFILE
ILLIOPOLIS SIDEWALK IMPROVEMENT**
SCALE: 1" = 20'
SHEET NO. 5 OF 6 SHEETS
STA. 34+00.00 TO STA. 39+89.79

F.A. RTE.	SECTION	COUNTY	TOTAL SHEETS	SHEET NO.
X	10-00015-00-SW	SANGAMON	22	14
CONTRACT NO.			93576	
ILLINOIS FED. AID PROJECT				

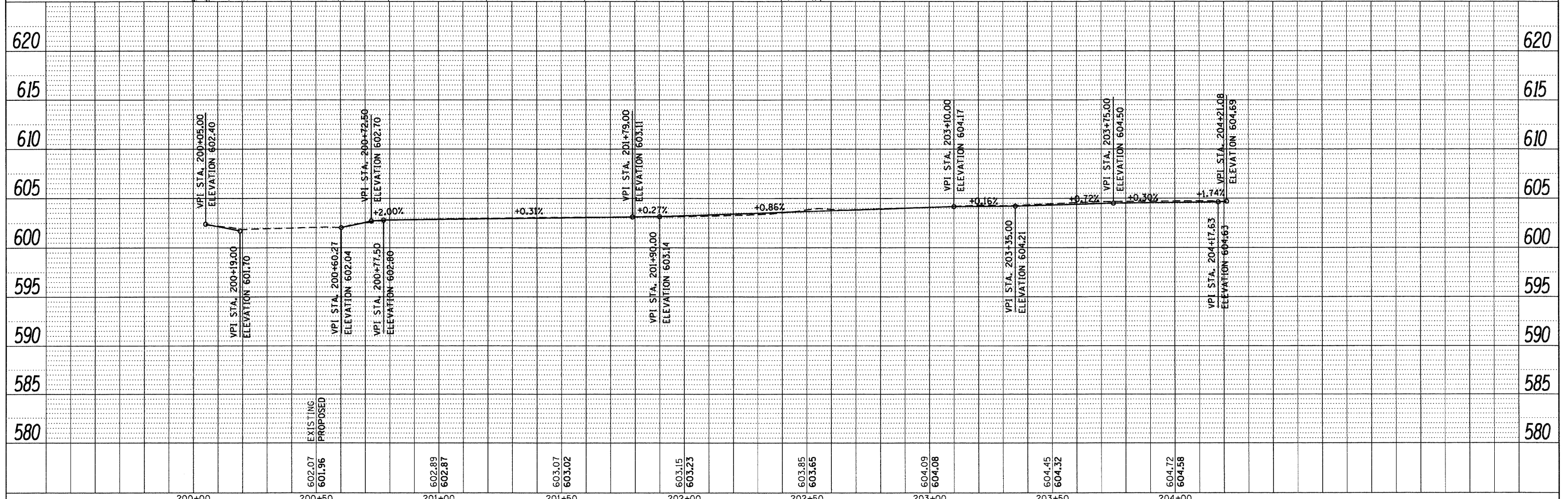
DATE	
BY	
REVISIONS	
NO.	
DATE	
BY	
DESCRIPTION	
1.	
2.	
3.	
4.	
5.	

DATE	
BY	
REVISIONS	
NO.	
DATE	
BY	
DESCRIPTION	
1.	
2.	
3.	
4.	
5.	

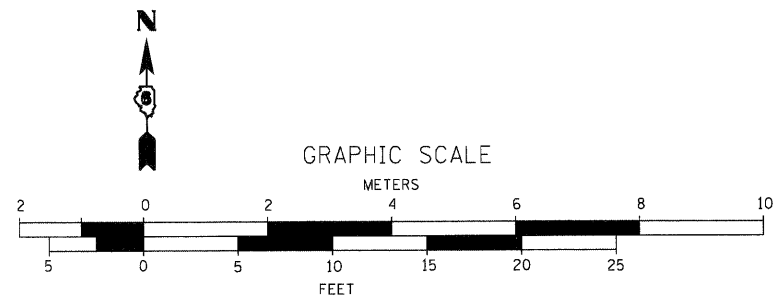


LEGEND

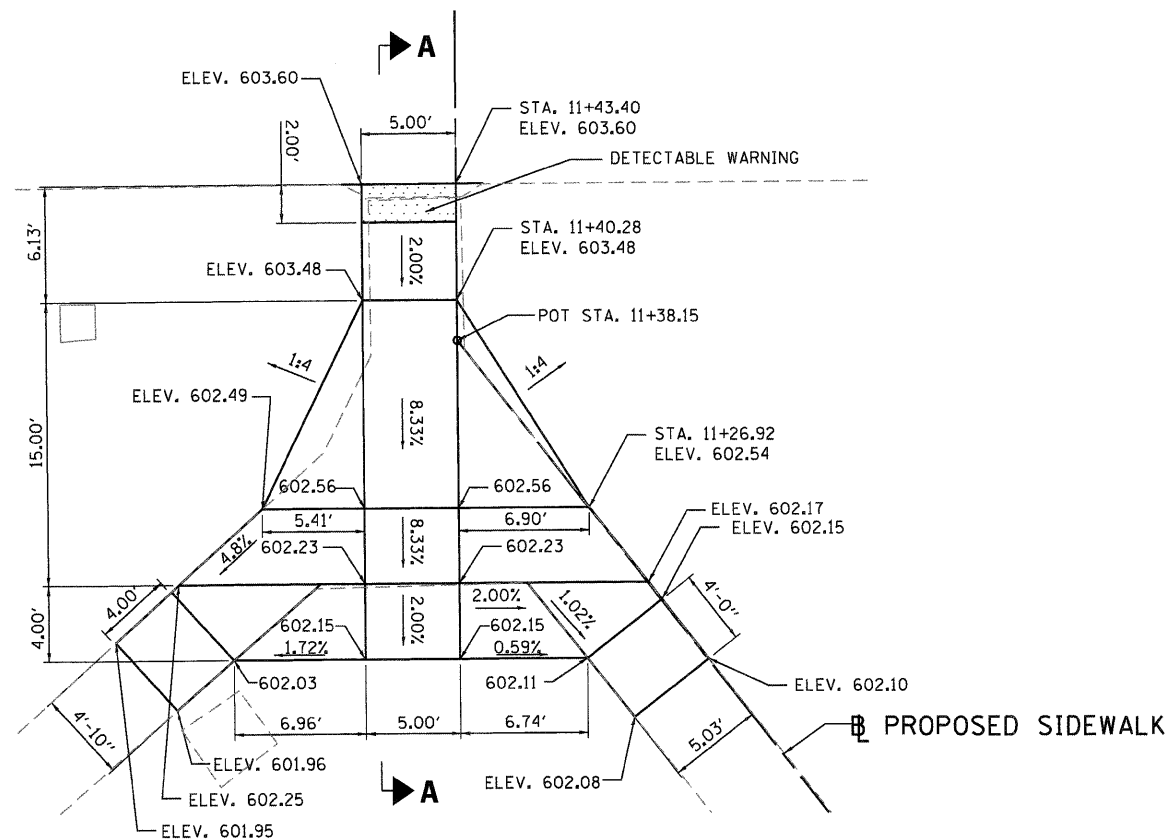
- TBR TO BE REMOVED
- REL TO BE RELOCATED
- ADJ TO BE ADJUSTED
- / / / DRIVEWAY REMOVAL
- PROPOSED FLASHING BEACON
- + PROPOSED SIGN
- / / / REGRADE BOULEVARD



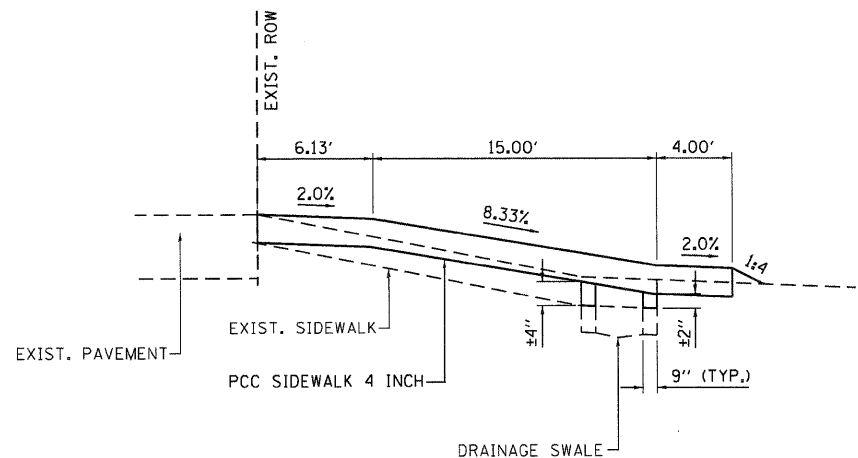
WHKS & co. ENGINEERING	7018 KINGSMILL CT., SPRINGFIELD, IL (217) 483-9457 DESIGN FIRM #184001036	USER NAME = bmoethies FILE NAME = 7524.PLNPRF2.SHT.dgn PLOT SCALE = 20.0000' / 1" IN. PLOT DATE = 3/22/2012	DESIGNED - CHECKED - DRAWN - CHECKED -	REVISED REVISED REVISED REVISED	STATE OF ILLINOIS DEPARTMENT OF TRANSPORTATION	PLAN AND PROFILE ILLIOPOLIS SIDEWALK IMPROVEMENT	SCALE: 1" = 20' SHEET NO. 6 OF 6 SHEETS STA. 200+00.00 TO STA. 204+00.00	F.A. RTE. X SECTION 10-00015-00-SW COUNTY SANGAMON TOTAL SHEETS 22 SHEET NO. 15 CONTRACT NO. ILLINOIS FED. AID PROJECT 9 3 5 7 6
--------------------------------------	--	--	---	--	---	---	--	---



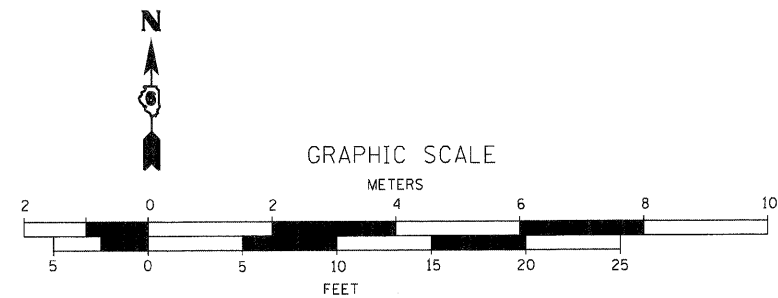
MATILDA STREET



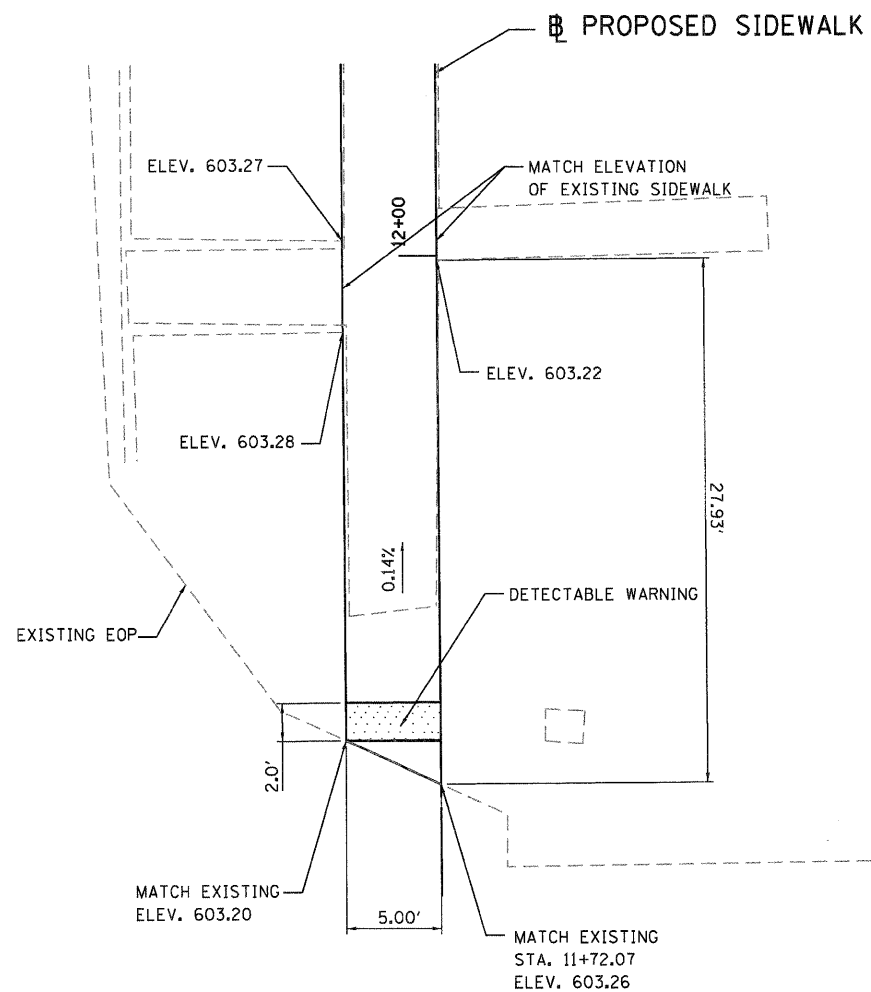
DETAIL "A"



SECTION A-A



3RD STREET



MATILDA STREET

DETAIL "B"

WHKS & CO.
ENGINEERING
7018 KINGSMILL CT.,
SPRINGFIELD, IL
(217) 483-9457
DESIGN FIRM #184001036

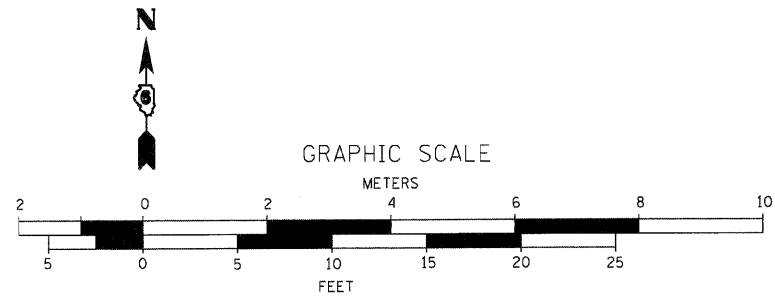
USER NAME = bmothies
FILE NAME = 7524.DETAILS.SHT.dgn
PLOT SCALE = 5.0000' / IN.
PLOT DATE = 3/28/2012

DESIGNED -	REVISED
CHECKED -	REVISED
DRAWN -	REVISED
CHECKED -	REVISED

STATE OF ILLINOIS
DEPARTMENT OF TRANSPORTATION

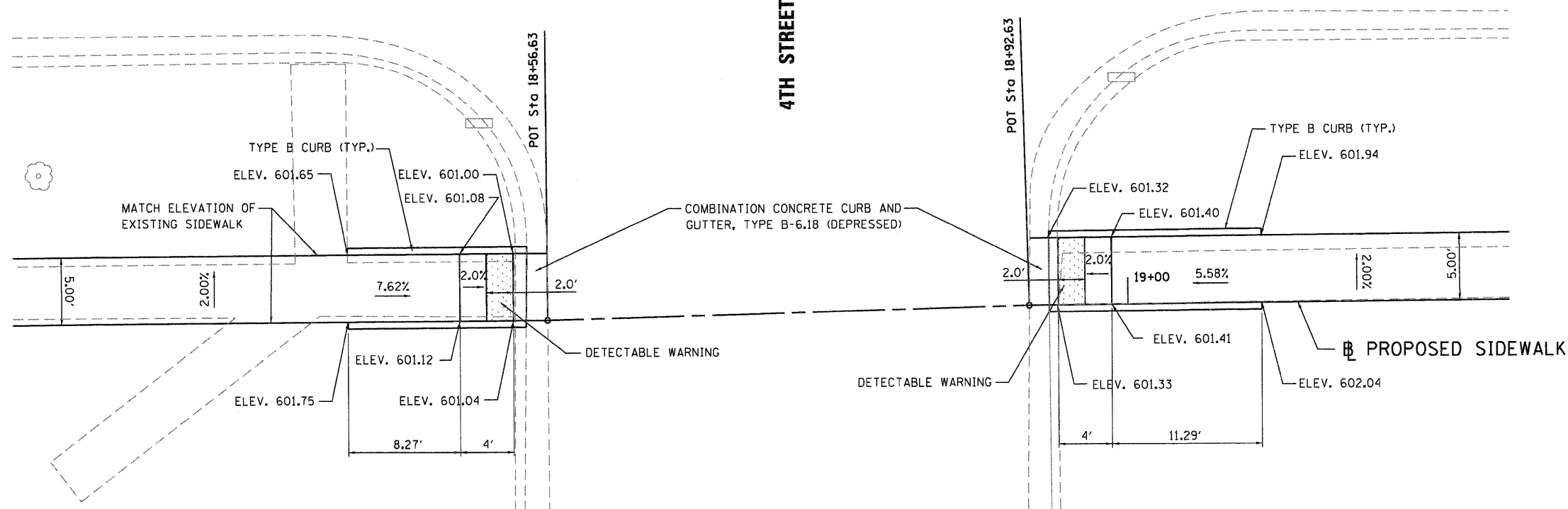
SIDEWALK DETAILS
ILLIOPOLIS SIDEWALK IMPROVEMENT
SCALE: 1" = 5'
SHEET NO. 1 OF 7 SHEETS
STA. TO STA.

F.A.X. RTE.	SECTION	COUNTY	TOTAL SHEETS	SHEET NO.
XXX	10-00015-00-SW	SANGAMON	22	16
CONTRACT NO.				
ILLINOIS FED. AID PROJECT				
93576				



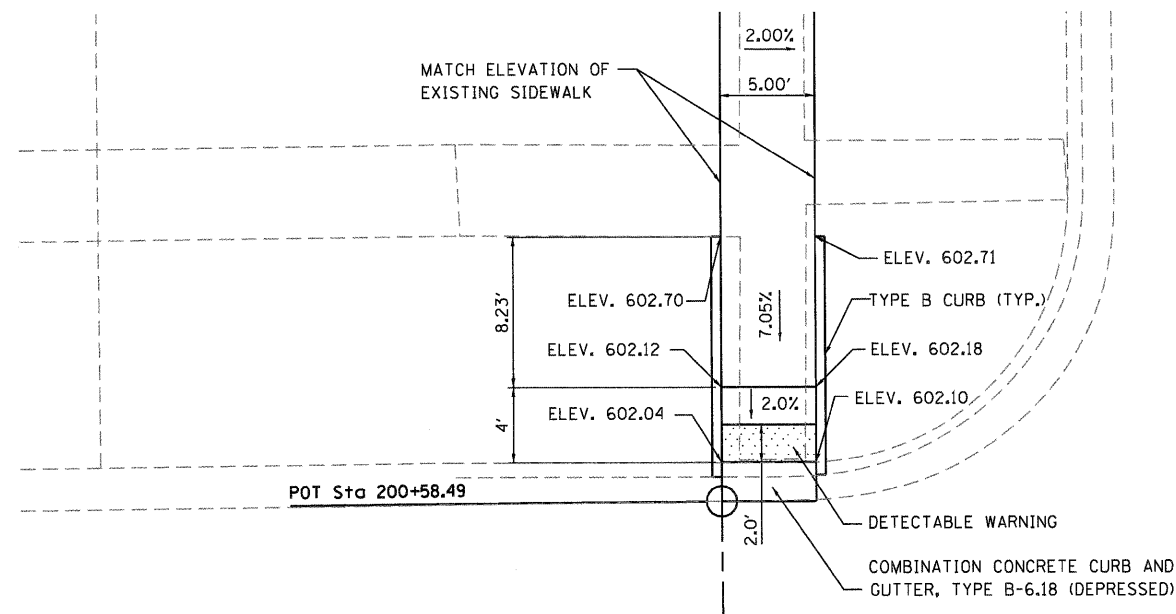
ANNE STREET

4TH STREET

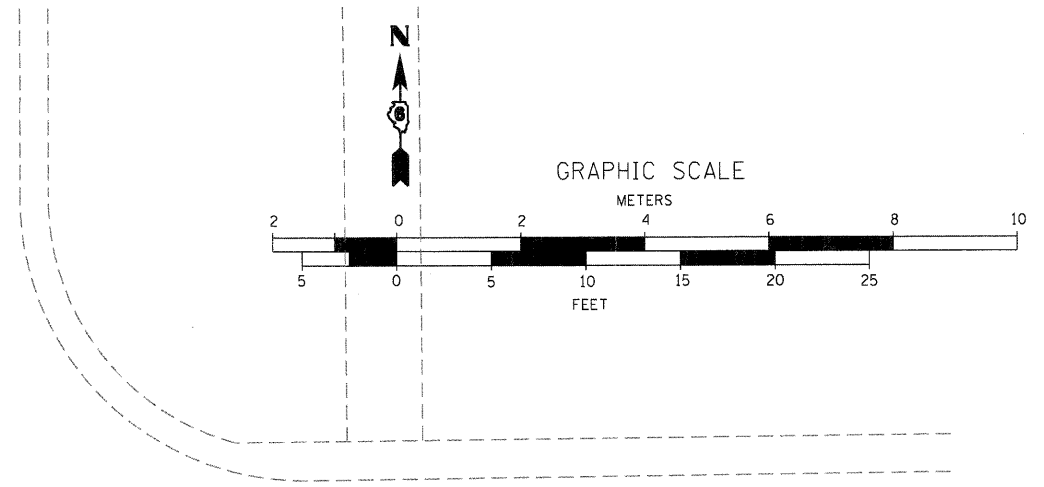


DETAIL "C"

	7018 KINGSMILL CT., SPRINGFIELD, IL (217) 483-9457 DESIGN FIRM #184001036	USER NAME = bmatthies	DESIGNED -	REVISED	<p align="center">STATE OF ILLINOIS DEPARTMENT OF TRANSPORTATION</p>	<p align="center">SIDEWALK DETAILS ILLIOPOLIS SIDEWALK IMPROVEMENT</p>			F.A.X. RTE.	SECTION	COUNTY	TOTAL SHEETS	SHEET NO.
		FILE NAME = 7524-DETAILS.SHT.dgn	CHECKED -	REVISED		SCALE: 1" = 5'	SHEET NO. 2 OF 7 SHEETS	STA. TO STA.	XXX	10-00015-00-SW	SANGAMON	22	17
		PLT SCALE = 5.0000' / IN.	DRAWN -	REVISED					CONTRACT NO.				
		PLT DATE = 3/22/2012	CHECKED -	REVISED					ILLINOIS FED. AID PROJECT 93576				

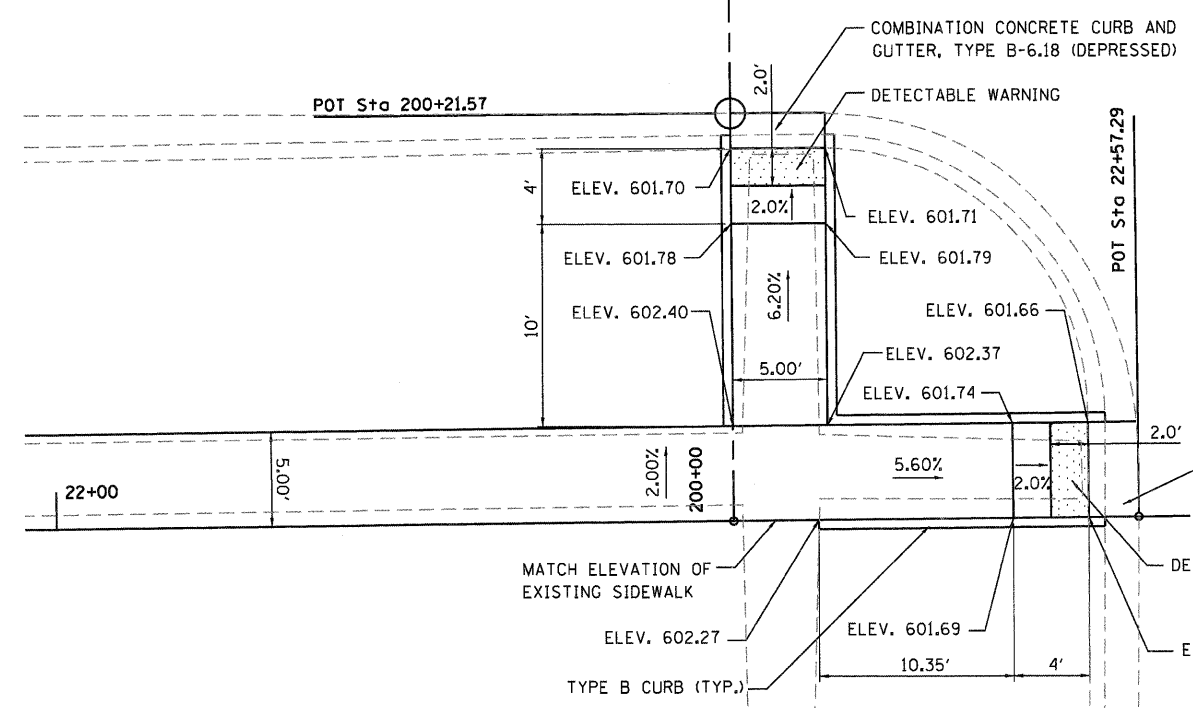


5TH STREET

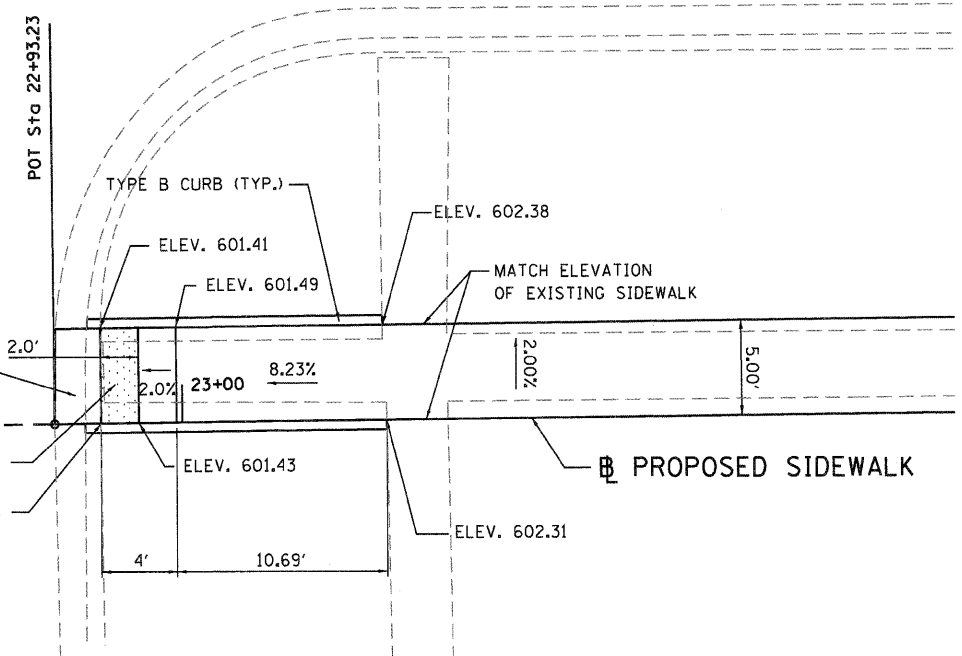


ANNE STREET

ANNE STREET



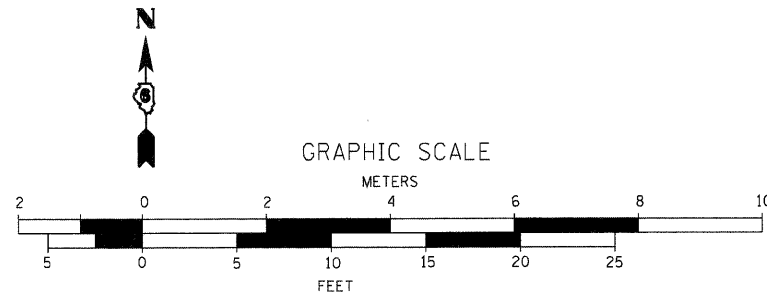
COMBINATION CONCRETE CURB AND GUTTER, TYPE B-6.18 (DEPRESSED)



PROPOSED SIDEWALK

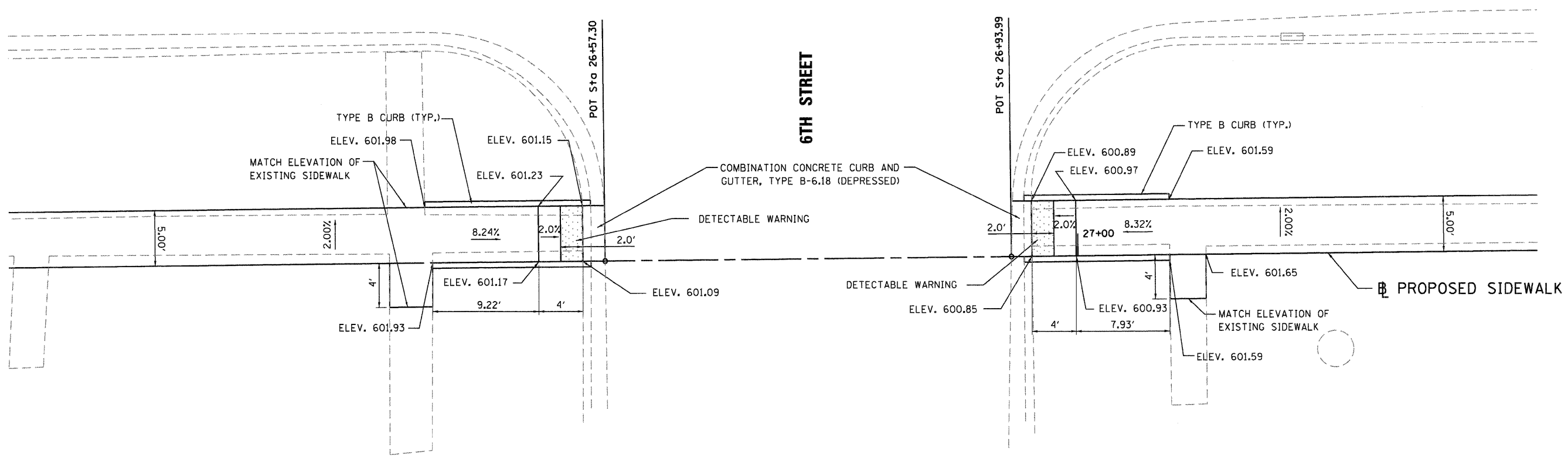
DETAIL "D"

WHKS & CO. ENGINEERING 7018 KINGSMILL CT., SPRINGFIELD, IL (217) 483-9457 DESIGN FIRM #184001036	USER NAME = bmothies	DESIGNED -	REVISED	STATE OF ILLINOIS DEPARTMENT OF TRANSPORTATION	SIDEWALK DETAILS ILLIOPOLIS SIDEWALK IMPROVEMENT		F.A.X. RTE. XXX	SECTION 10-00015-00-SW	COUNTY SANGAMON	TOTAL SHEETS 22	SHEET NO. 18
	FILE NAME = 7524-DETAILS-SHT.dgn	CHECKED -	REVISED		SCALE: 1" = 5'	SHEET NO. 3 OF 7 SHEETS	STA. TO STA.	ILLINOIS FED. AID PROJECT		CONTRACT NO. 93576	
	PLOT SCALE = 5.0000 "/ IN.	DRAWN -	REVISED								
	PLOT DATE = 3/22/2012	CHECKED -	REVISED								



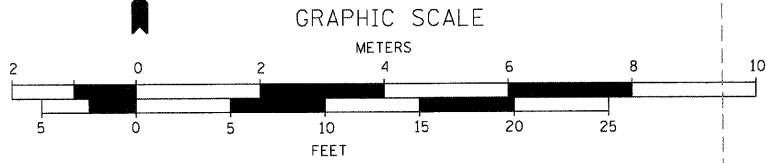
ANNE STREET

ANNE STREET



DETAIL "E"

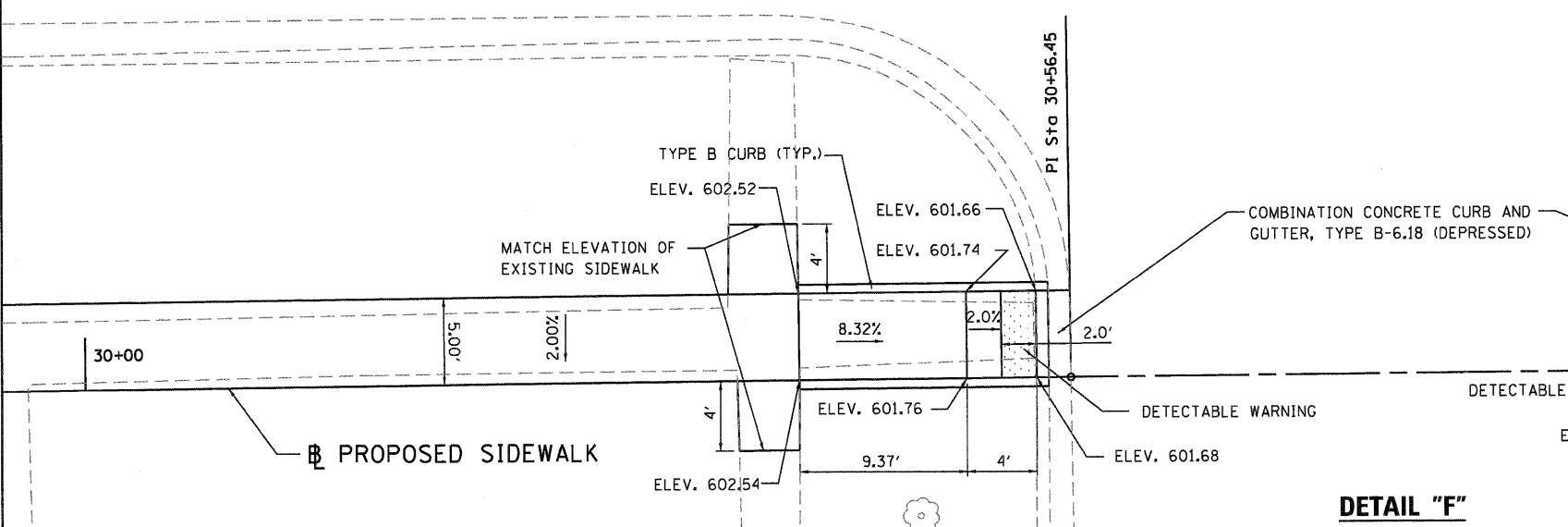
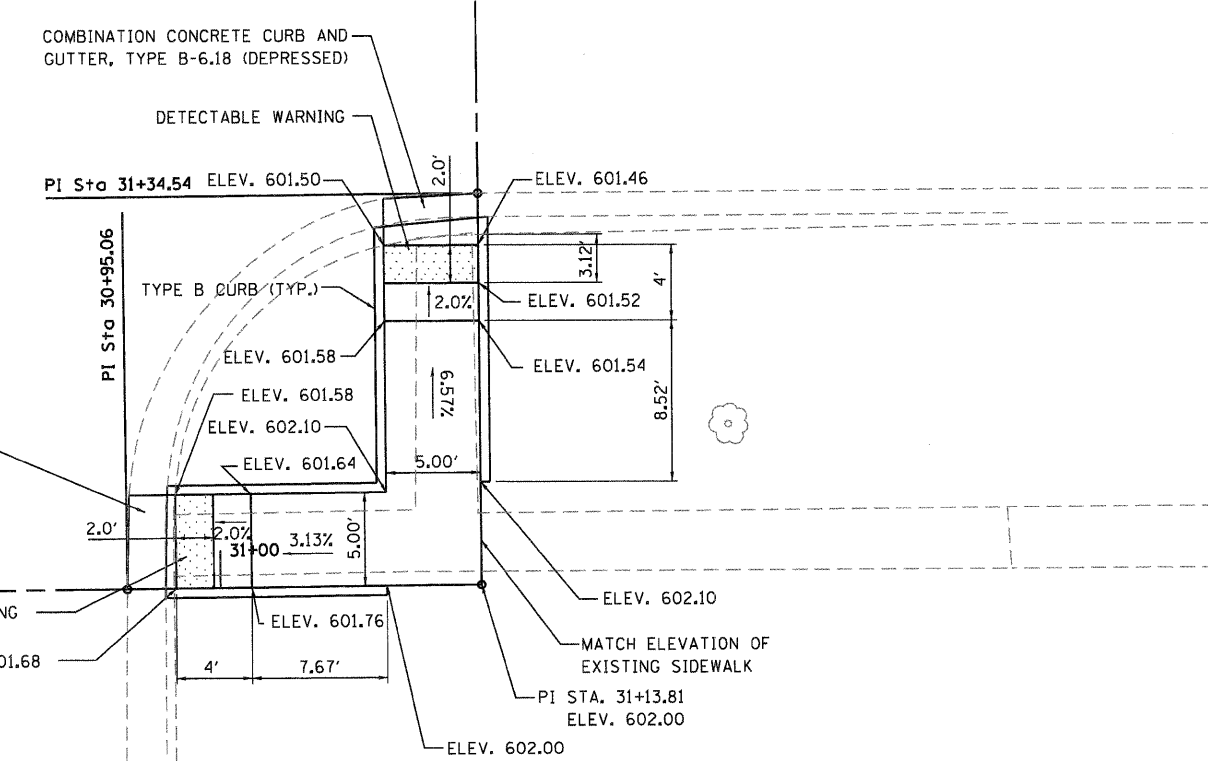
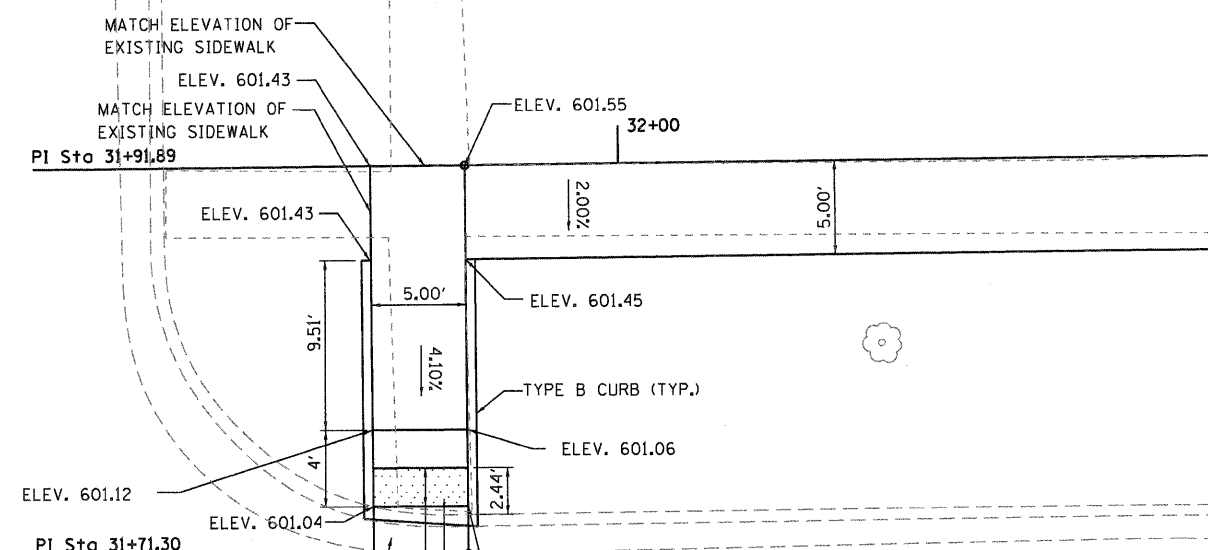
WHKS & CO. ENGINEERING 7018 KINGSMILL CT., SPRINGFIELD, IL (217) 483-9457 DESIGN FIRM #184001036	USER NAME = bmetthies	DESIGNED -	REVISED	STATE OF ILLINOIS DEPARTMENT OF TRANSPORTATION	SIDEWALK DETAILS ILLIOPOLIS SIDEWALK IMPROVEMENT		F.A.X. RTE.	SECTION	COUNTY	TOTAL SHEETS	SHEET NO.
	FILE NAME = 7524_DETAILS.SHT.dgn	CHECKED -	REVISED		XXX	10-00015-00-SW	SANGAMON	22	19		
	PLOT SCALE = 5.0000' / IN.	DRAWN -	REVISED		CONTRACT NO.						
	PLOT DATE = 3/22/2012	CHECKED -	REVISED		ILLINOIS FED. AID PROJECT						
				SCALE: 1" = 5'		SHEET NO. 4 OF 7 SHEETS		STA. TO STA.		93576	



7TH STREET

ANNE STREET

ANNE STREET



DETAIL "F"

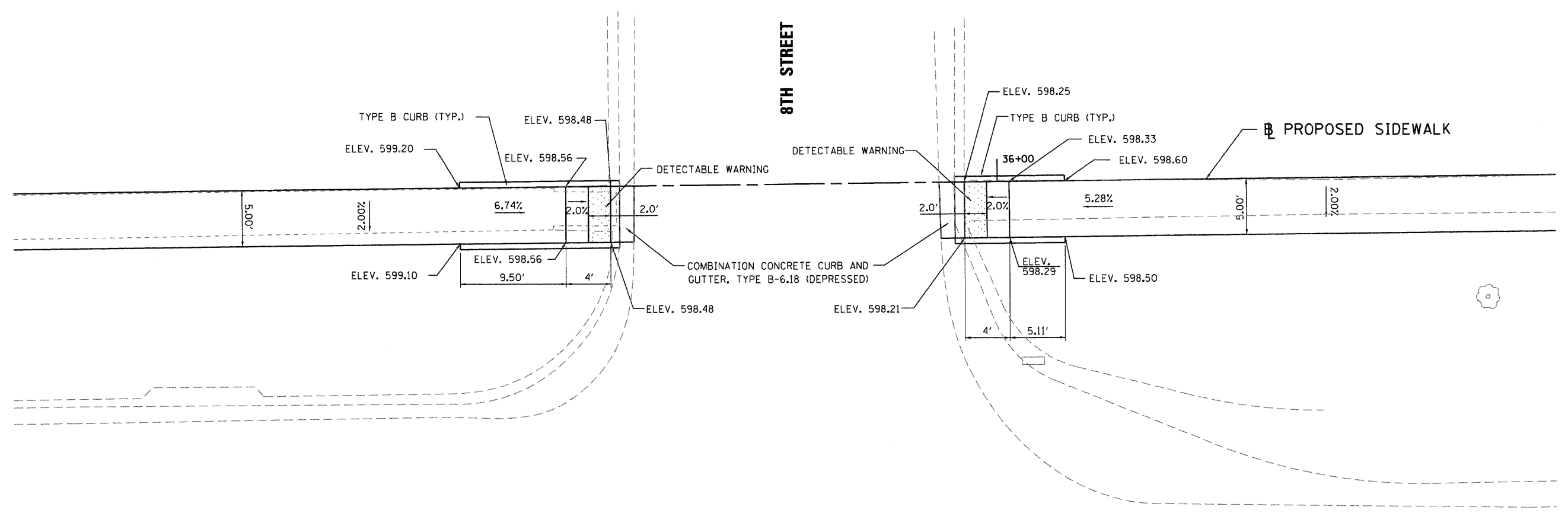
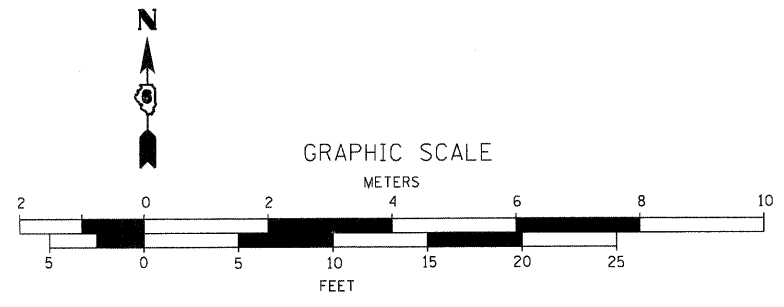
WHKS & CO.
ENGINEERING
7018 KINGSMILL CT.,
SPRINGFIELD, IL
(217) 483-9457
DESIGN FIRM #184001036

USER NAME = bmatthies	DESIGNED -	REVISED
FILE NAME = 7524_DETAILS.SHT.dgn	CHECKED -	REVISED
PLOT SCALE = 5.0000' / IN.	DRAWN -	REVISED
PLOT DATE = 3/22/2012	CHECKED -	REVISED

STATE OF ILLINOIS
DEPARTMENT OF TRANSPORTATION

SIDEWALK DETAILS
ILLIOPOLIS SIDEWALK IMPROVEMENT
SCALE: 1" = 5'
SHEET NO. 5 OF 7 SHEETS
STA. TO STA.

F.A.X. RTE. XXX	SECTION 10-00015-00-SW	COUNTY SANGAMON	TOTAL SHEETS 22	SHEET NO. 20
ILLINOIS FED. AID PROJECT				CONTRACT NO. 93576

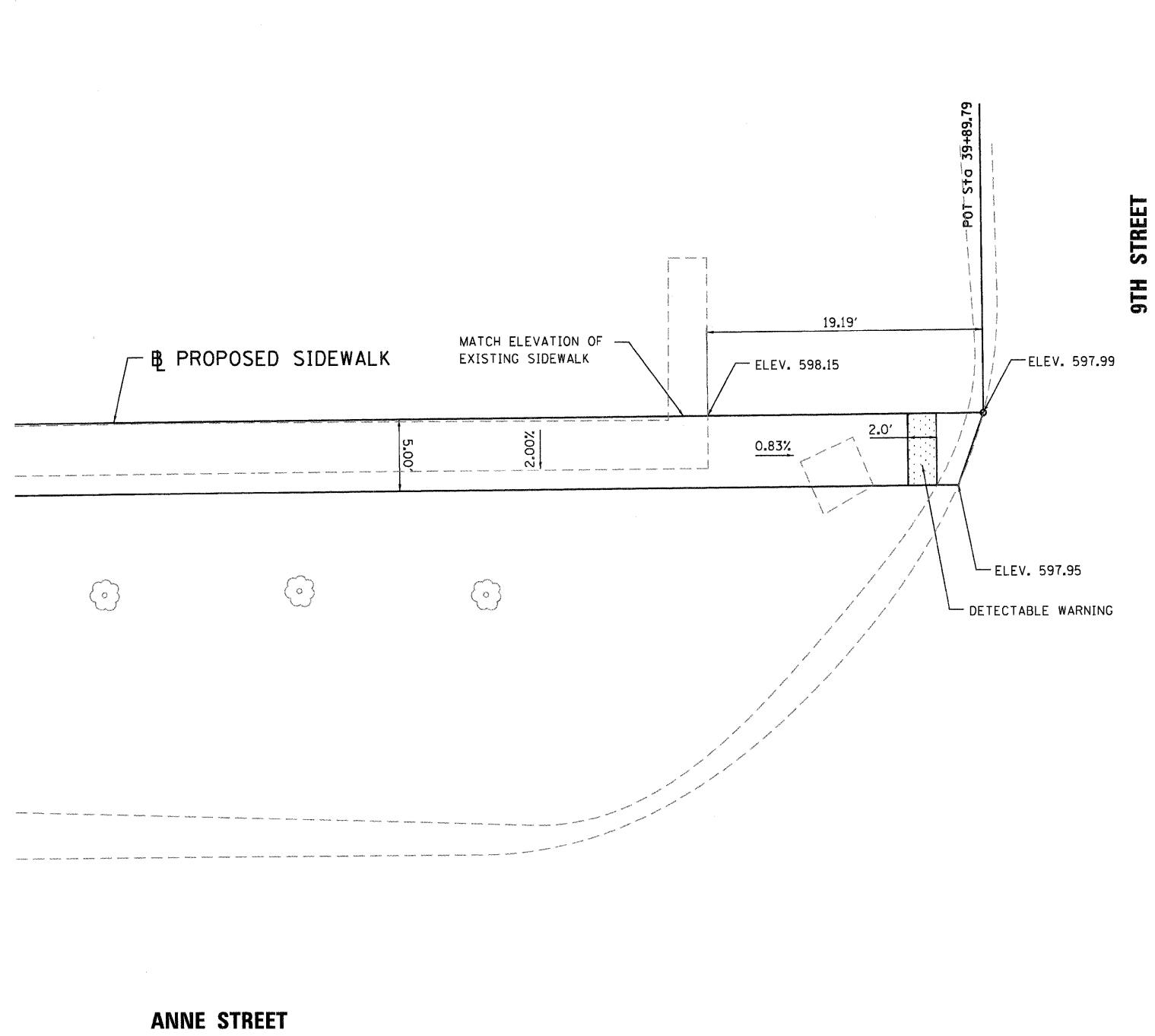
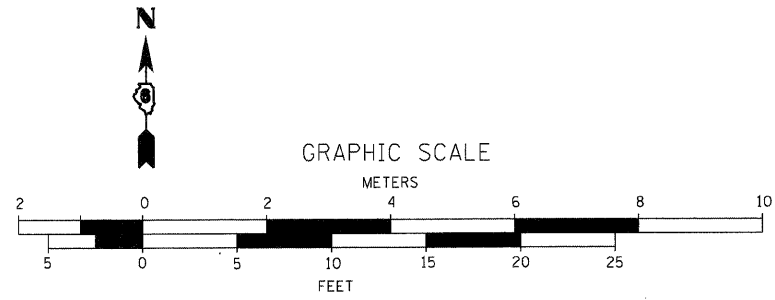


ANNE STREET

ANNE STREET

DETAIL "G"

WHKS & CO. ENGINEERING 7018 KINGSMILL CT., SPRINGFIELD, IL (217) 483-9457 DESIGN FIRM #184001036	USER NAME = bmothies	DESIGNED -	REVISED	STATE OF ILLINOIS DEPARTMENT OF TRANSPORTATION	SIDEWALK DETAILS ILLIOPOLIS SIDEWALK IMPROVEMENT	F.A.X. RTE.	SECTION	COUNTY	TOTAL SHEETS	SHEET NO.
	FILE NAME = 7524.DETAILS.SHT.dgn	CHECKED -	REVISED			XXX	10-00015-00-SW	SANGAMON	22	21
	PLOT SCALE = 5.0000' / IN.	DRAWN -	REVISED			CONTRACT NO.				
	PLOT DATE = 3/22/2012	CHECKED -	REVISED			ILLINOIS FED. AID PROJECT 93576				
					SCALE: 1" = 5'	SHEET NO. 6 OF 7 SHEETS		STA. TO STA.		



DETAIL "H"

WHKS & CO. ENGINEERING 7018 KINGSMILL CT., SPRINGFIELD, IL (217) 483-9457 DESIGN FIRM #184001036	USER NAME = bmatthias FILE NAME = 7524_DETAILS_SHT.dgn PLOT SCALE = 5.0000' / IN. PLOT DATE = 3/22/2012	DESIGNED - CHECKED - DRAWN - CHECKED -	REVISED REVISED REVISED REVISED	STATE OF ILLINOIS DEPARTMENT OF TRANSPORTATION	SIDEWALK DETAILS ILLIOPOLIS SIDEWALK IMPROVEMENT			F.A.X. RTE. XXX	SECTION 10-00015-00-SW	COUNTY SANGAMON	TOTAL SHEETS 22	SHEET NO. 22
	SCALE: 1" = 5'					SHEET NO. 7 OF 7 SHEETS	STA. TO STA.	CONTRACT NO. 93576 ILLINOIS FED. AID PROJECT				