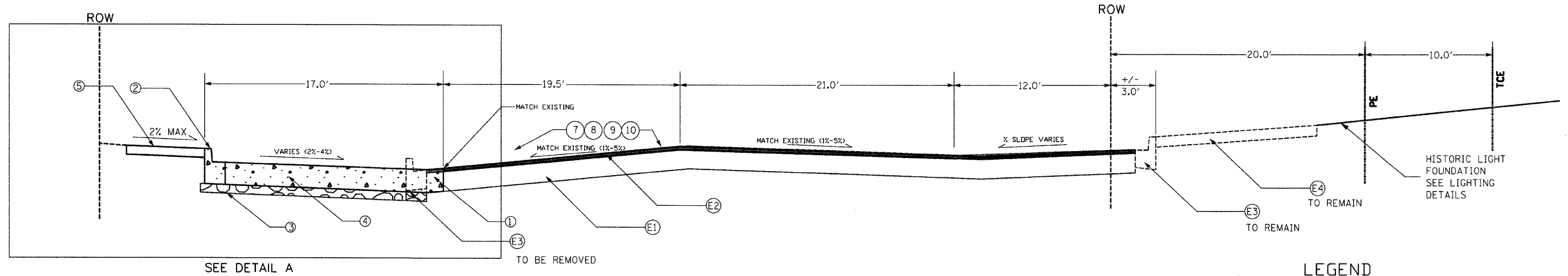


# 5TH STREET - VERMONT TO BROADWAY

STA. 50+46.59 TO STA. 53+64.68 (±2200 SQ. YD.)



SEE DETAIL A

• MILL & OVERLAY WILL CONTINUE TO LIMITS SHOWN ON PLAN SHEETS.

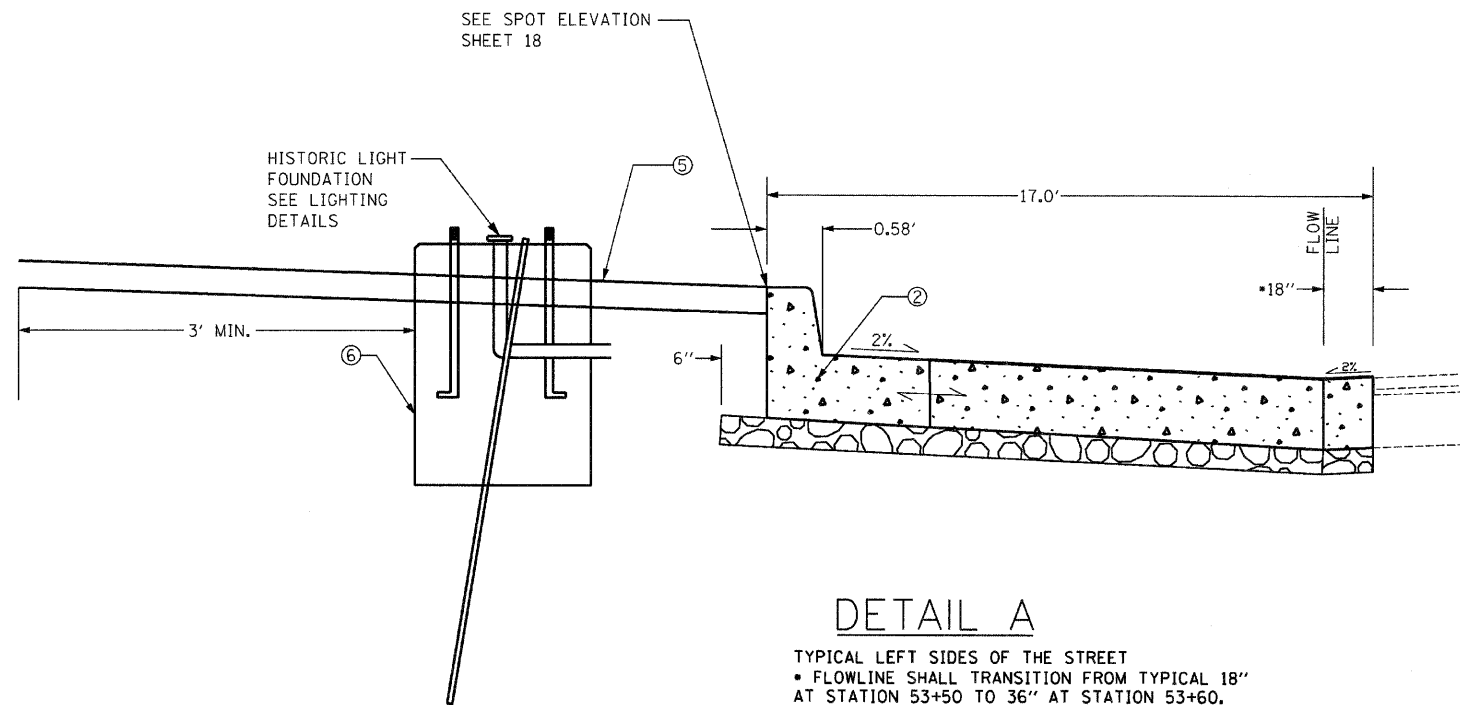
## LEGEND

### EXISTING

- (E1) 9" PCC PAVEMENT
- (E2) BITUMINOUS CONCRETE BINDER AND SURFACE COURSE, VARIABLE DEPTH (1.5" MIN)
- (E3) TYPE B CURB
- (E4) PCC SIDEWALK - 4"

### PROPOSED

- (1) PAVEMENT REMOVAL, SPECIAL
- (2) CONCRETE CURB AND GUTTER, TYPE B-6.12
- (3) SUB-BASE GRANULAR MATERIAL TYPE B, 4"
- (4) PORTLAND CEMENT CONCRETE PAVEMENT, 9 INCH
- (5) PCC SIDEWALK, 4 INCH, 6FT WIDE
- (6) HISTORIC LIGHT FOUNDATION / CONCRETE FOUNDATION (SPECIAL)
- (7) POLYMERIZED HOT-MIX ASPHALT SURFACE COURSE, MIX "C", N50 1 1/2 "
- (8) LEVELING BINDER (MACHINE METHOD), N50 3/4"
- (9) BITUMINOUS MATERIALS (PRIME COAT)
- (10) HOT-MIX ASPHALT SURFACE REMOVAL VARIABLE DEPTH



## DETAIL A

TYPICAL LEFT SIDES OF THE STREET  
 • FLOWLINE SHALL TRANSITION FROM TYPICAL 18" AT STATION 53+50 TO 36" AT STATION 53+60.

PAVEMENT DEPTHS ARE FOR INFORMATIONAL PURPOSES ONLY

FILE NAME = D6XXX-sh1-11-Typical	USER NAME = MDL	DESIGNED - _____	REVISED - _____	<b>STATE OF ILLINOIS DEPARTMENT OF TRANSPORTATION</b>	<b>TYPICAL SECTIONS</b>	F.A.P. RTE. 63	SECTION 09-00309-00-LS	COUNTY ADAMS	TOTAL SHEETS 39	SHEET NO. 11
PLOT SCALE = NTS	CHECKED - _____	REVISIED - _____	REVISIED - _____	SCALE: NTS	SHEET NO. 2 OF 3 SHEETS	STA. _____ TO STA. _____		CONTRACT NO. 93578		
PLOT DATE = #DATE#	DATE - _____	REVISIED - _____	REVISIED - _____	ILLINOIS FED. AID PROJECT						