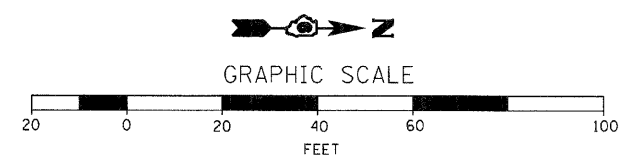
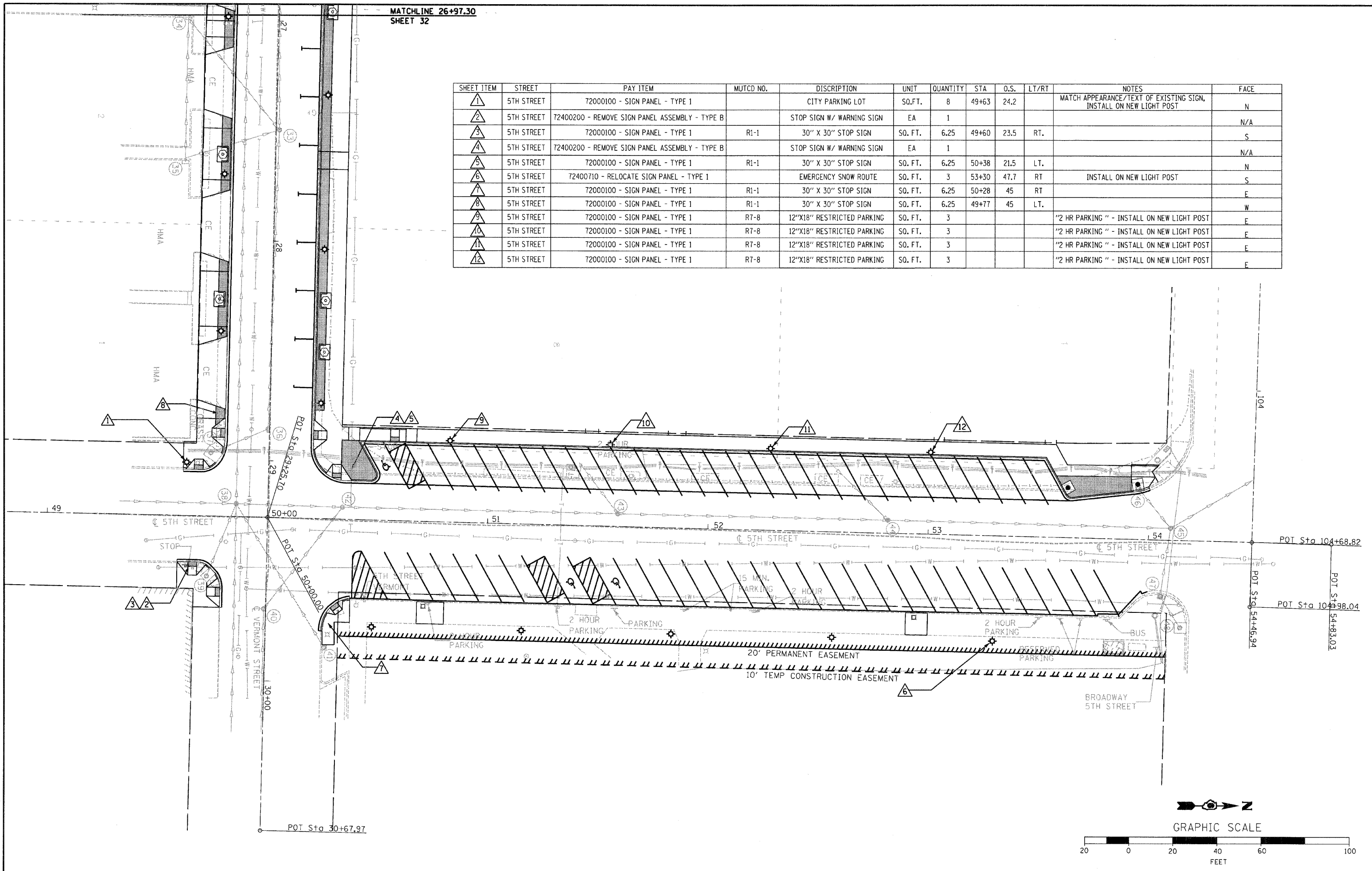


SHEET ITEM	STREET	PAY ITEM	MUTCD NO.	DISCRIPTION	UNIT	QUANTITY	STA	O.S.	LT/RT	NOTES	FACE
1	5TH STREET	72000100 - SIGN PANEL - TYPE 1		CITY PARKING LOT	SQ.FT.	8	49+63	24.2		MATCH APPEARANCE/TEXT OF EXISTING SIGN, INSTALL ON NEW LIGHT POST	N
2	5TH STREET	72400200 - REMOVE SIGN PANEL ASSEMBLY - TYPE B		STOP SIGN W/ WARNING SIGN	EA	1					N/A
3	5TH STREET	72000100 - SIGN PANEL - TYPE 1	R1-1	30" X 30" STOP SIGN	SQ. FT.	6.25	49+60	23.5	RT.		S
4	5TH STREET	72400200 - REMOVE SIGN PANEL ASSEMBLY - TYPE B		STOP SIGN W/ WARNING SIGN	EA	1					N/A
5	5TH STREET	72000100 - SIGN PANEL - TYPE 1	R1-1	30" X 30" STOP SIGN	SQ. FT.	6.25	50+38	21.5	LT.		N
6	5TH STREET	72400710 - RELOCATE SIGN PANEL - TYPE 1		EMERGENCY SNOW ROUTE	SQ. FT.	3	53+30	47.7	RT	INSTALL ON NEW LIGHT POST	S
7	5TH STREET	72000100 - SIGN PANEL - TYPE 1	R1-1	30" X 30" STOP SIGN	SQ. FT.	6.25	50+28	45	RT		E
8	5TH STREET	72000100 - SIGN PANEL - TYPE 1	R1-1	30" X 30" STOP SIGN	SQ. FT.	6.25	49+77	45	LT.		W
9	5TH STREET	72000100 - SIGN PANEL - TYPE 1	R7-8	12"X18" RESTRICTED PARKING	SQ. FT.	3				"2 HR PARKING " - INSTALL ON NEW LIGHT POST	E
10	5TH STREET	72000100 - SIGN PANEL - TYPE 1	R7-8	12"X18" RESTRICTED PARKING	SQ. FT.	3				"2 HR PARKING " - INSTALL ON NEW LIGHT POST	E
11	5TH STREET	72000100 - SIGN PANEL - TYPE 1	R7-8	12"X18" RESTRICTED PARKING	SQ. FT.	3				"2 HR PARKING " - INSTALL ON NEW LIGHT POST	E
12	5TH STREET	72000100 - SIGN PANEL - TYPE 1	R7-8	12"X18" RESTRICTED PARKING	SQ. FT.	3				"2 HR PARKING " - INSTALL ON NEW LIGHT POST	E



FILE NAME = D6XXXX-shr-33-Sign	USER NAME = MDL	DESIGNED -	REVISED -
PLOT SCALE = 1" = 40'		DRAWN -	REVISED -
PLOT DATE = #DATE#		CHECKED -	REVISED -
		DATE -	REVISED -

**STATE OF ILLINOIS
DEPARTMENT OF TRANSPORTATION**

**SIGNING PLAN
SHEETS**

SCALE: 1" = 20' SHEET NO. 3 OF 3 SHEETS STA. _____ TO STA. _____

F.A.P. RTE. 63	SECTION 09-00309-00-LS	COUNTY ADAMS	TOTAL SHEETS 39	SHEET NO. 33
CONTRACT NO. 93578				
ILLINOIS FED. AID PROJECT				