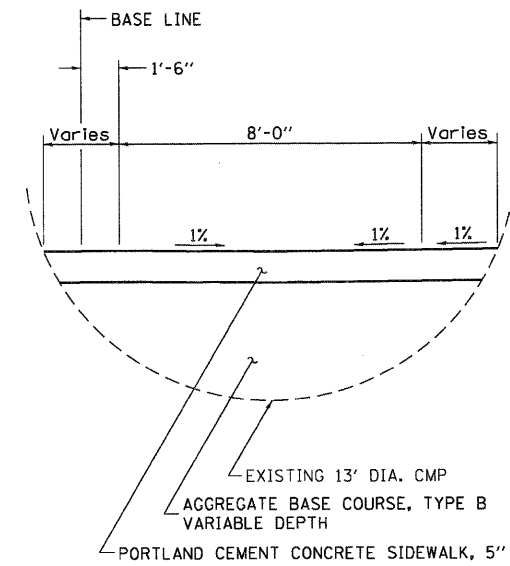
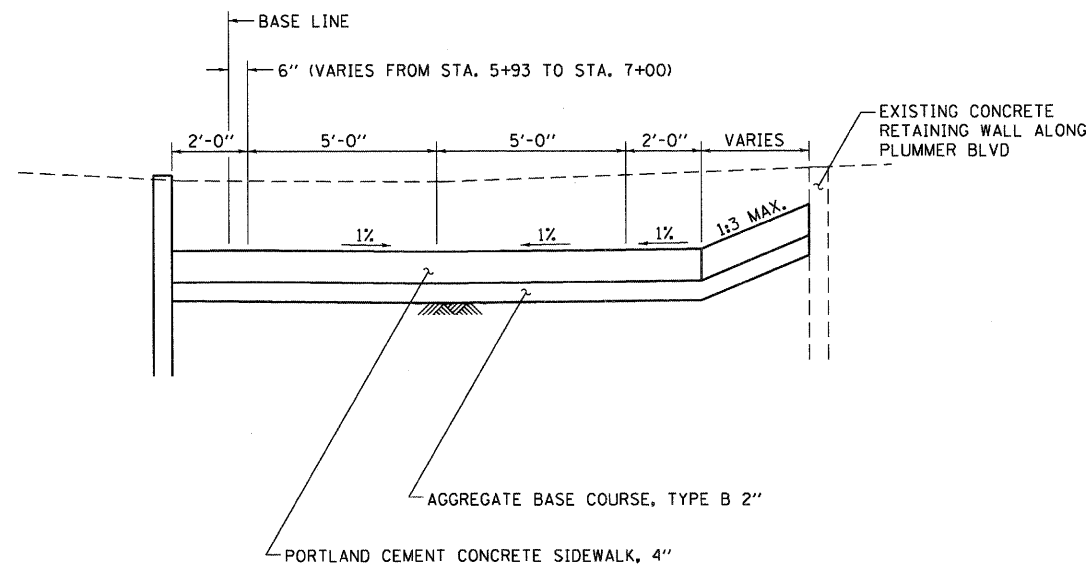


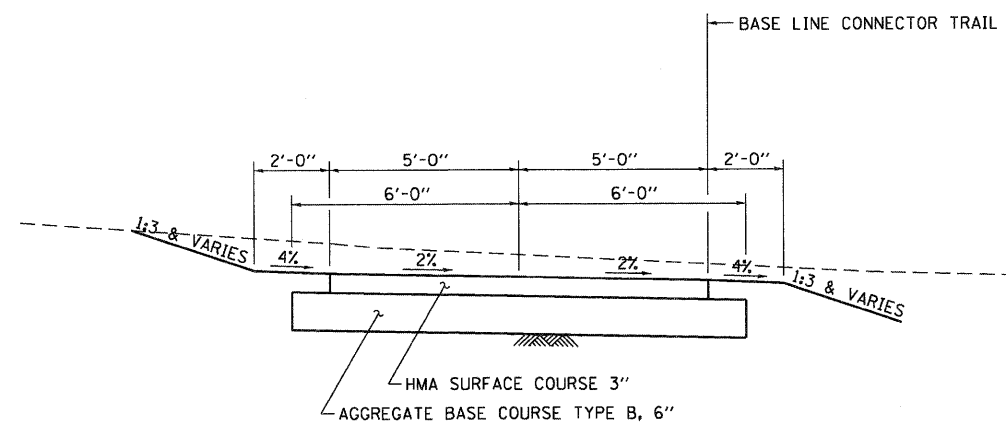
PROPOSED TYPICAL CROSS SECTION
 FROM STA. 0+42 TO STA. 2+40
 FROM STA. 7+00 TO STA. 9+38



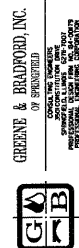
PROPOSED TYPICAL CROSS SECTION
 FROM STA. 3+65.00 TO STA. 5+93.25



PROPOSED TYPICAL CROSS SECTION
 FROM STA. 2+40.00 TO STA. 3+65.00
 FROM STA. 5+93.25 TO STA. 7+00.00



PROPOSED TYPICAL CROSS SECTION
 INTERURBAN TRAIL CONNECTOR
 STA. 49+85 TO STA. 51+94.77



GREENE & BRADFORD, INC.
 OF SPRINGFIELD
 CIVIL ENGINEERS
 1001 N. UNIVERSITY AVENUE
 SPRINGFIELD, ILLINOIS 62761
 (618) 791-8844

FILE NAME = J:\10001.22\CADD\CADD Sheets\sht-typical.dgn	USER NAME = amandah	DESIGNED - WCB	REVISED -
G&B PROJECT: 10001.22	PLOT SCALE = 10.0000' / 1" / 10'	DRAWN - AH	REVISED -
PLOT DRIVER = PLOTTER	PLOT DATE = 4/5/2012	CHECKED - GSK	REVISED -
		DATE - 4/5/2012	REVISED -

**PLUMMER BLVD MULTI-USE TRAIL
 VILLAGE OF CHATHAM**

TYPICAL SECTIONS

SCALE: NTS SHEET NO. 1 OF 1 SHEETS STA. TO STA.

F.A. RTE.	SECTION	COUNTY	TOTAL SHEETS	SHEET NO.
•	10-00030-00-BT	SANGAMON	29	3
• PLUMMER BLVD MULTI-USE TRAIL			CONTRACT NO. 93579	
FED. ROAD DIST. NO. ILLINOIS FED. AID PROJECT TE-0006 (109)				