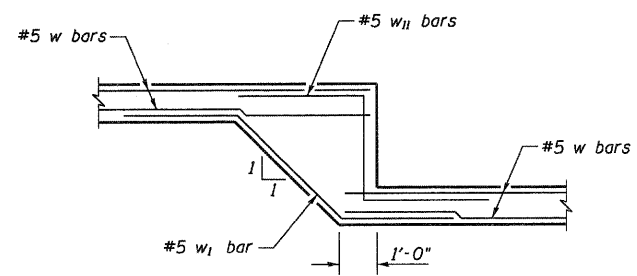
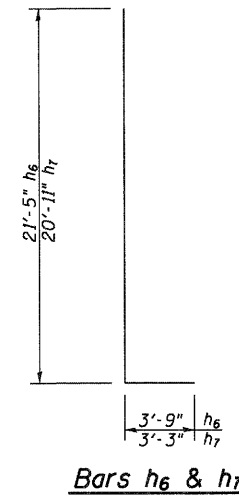
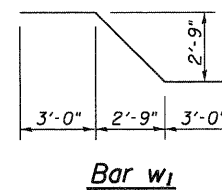
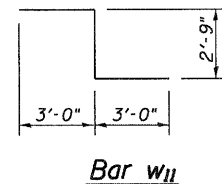
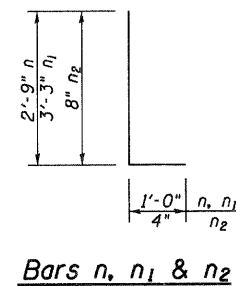


ELEVATION
(West Retaining Wall)



STEP FOOTING DETAIL

Bar Laps:
#4 bar 2'-5" Min.
#5 bar 3'-0" Min.

ELEVATION
SECTION 10-00030-00-BT
SANGAMON COUNTY
WEST RETAINING WALL

GREENE & BRADFORD, INC.
CONSULTING ENGINEERS
1001 N. WASHINGTON ST., SUITE 200
CHAMPAIGN, ILLINOIS 61820
PHONE: 219.244.1111 FAX: 219.244.1112
WWW.GRENE-AND-BRADFORD.COM

FILE NAME = J:\10001.22\CADD\CADD Sheets\Retaining Wall\plandgn	USER NAME = amandah	DESIGNED - NB	REVISED -
PLOT SCALE = 10.0000' / 1"	CHECKED - WCB	DRAWN - AJH	REVISED -
PLOT DATE = 4/9/2012	DATE - 4/9/12		REVISED -

PLUMMER BLVD MULTI-USE TRAIL
VILLAGE OF CHATHAM

ELEVATION - WEST RETAINING WALL

SCALE: NTS SHEET NO. 3 OF 8 SHEETS

F.A. RTE.	SECTION	COUNTY	TOTAL SHEETS	SHEET NO.
	10-00030-00-BT	SANGAMON	29	16
PLUMMER BLVD MULTI-USE TRAIL			CONTRACT NO. 93579	
[ILLINOIS] FED. AID PROJECT TE-0006 (109)				