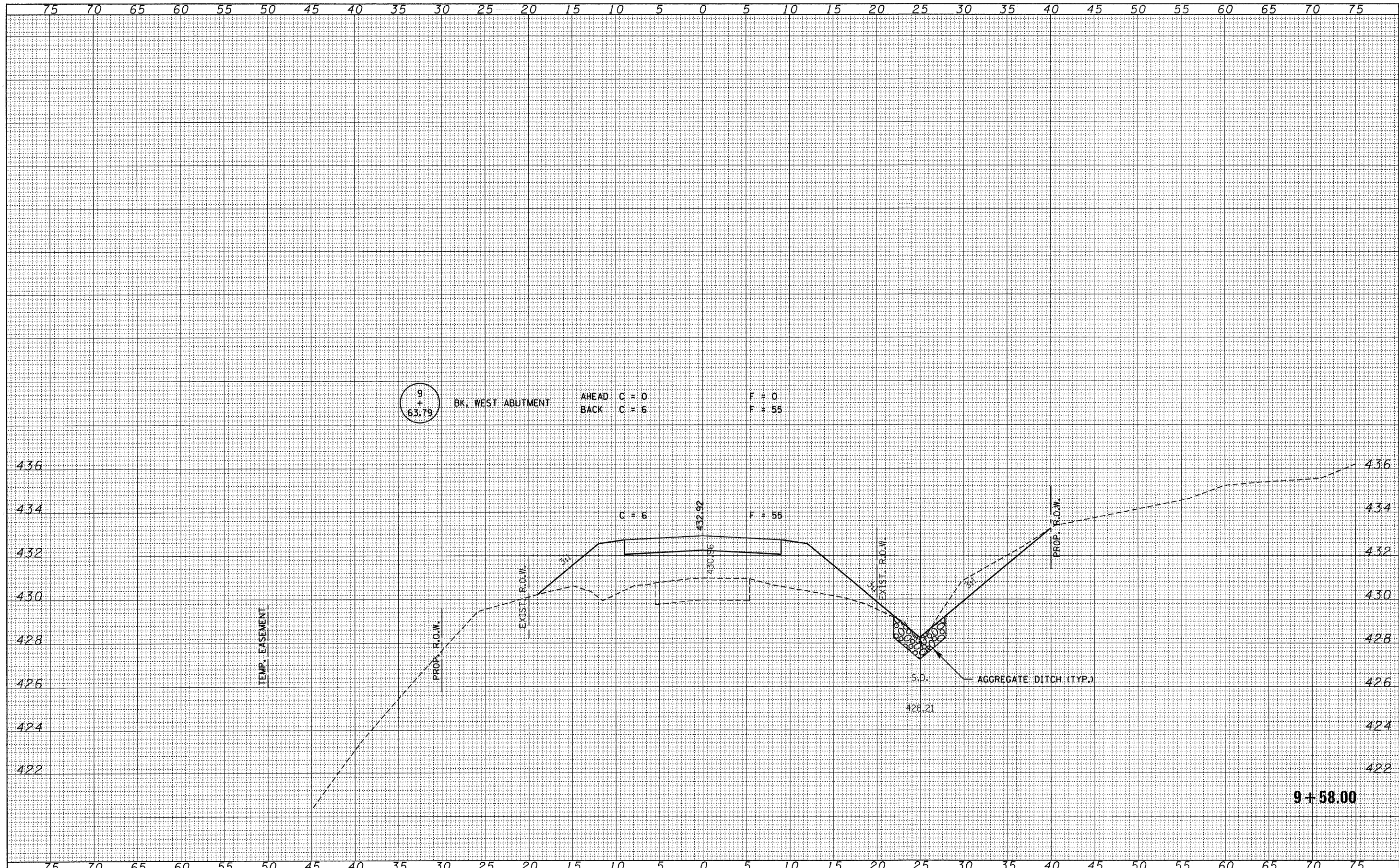


FINAL SURVEY	BY	DATE
SURVEYED		
PLOTTED		
NOTE BOOK		
AREAS CHECKED		
NO.		

ORIGINAL SURVEY	BY	DATE
SURVEYED		
PLOTTED		
NOTE BOOK		
AREAS CHECKED		
NO.		



9+58.00

FILE NAME = 110175-ent-ax.dgn	USER NAME =	DESIGNED - J.W.F.	REVISED -	STATE OF ILLINOIS CLAY COUNTY HIGHWAY DEPARTMENT	STATION CROSS SECTIONS KNEFF CEMETERY LANE				T.R.	SECTION	COUNTY	TOTAL SHEETS	SHEET NO.
HAMPTON, LENZINI AND RENWICK, INC.		DRAWN - D.T.M.	REVISED -		355	07-11130-00-BR	CLAY	29	11				
3035 STEVENSON DRIVE, SUITE 201 SPRINGFIELD, ILLINOIS 62703	PLOT SCALE =	CHECKED - S.W.M.	REVISED -		STANFORD ROAD DISTRICT				CONTRACT NO. 95667				
ILLINOIS PROFESSIONAL DESIGN FIRM L5/PE/SE CORP. 184.002938	PLOT DATE = 3/7/2012	DATE - 03/05/12	REVISED -		SCALE: H5+V2	SHEET NO. OF SHEETS	STA. 9+58.00 TO STA. 9+58.00	[ILLINOIS] FED. AID PROJECT BR05-0025(070)					