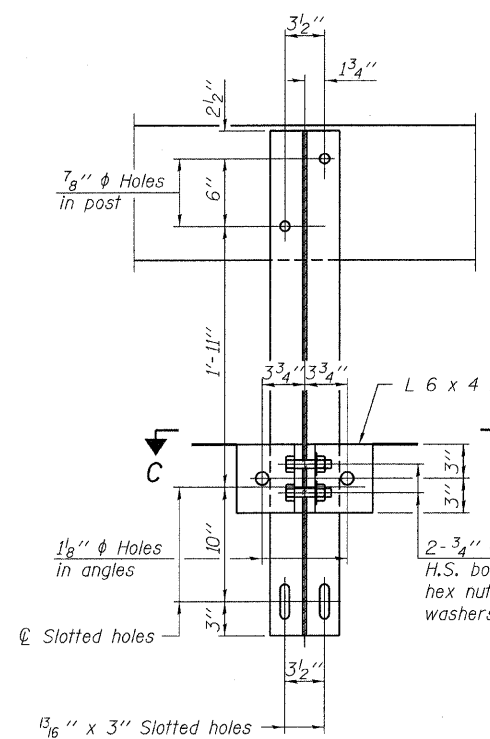
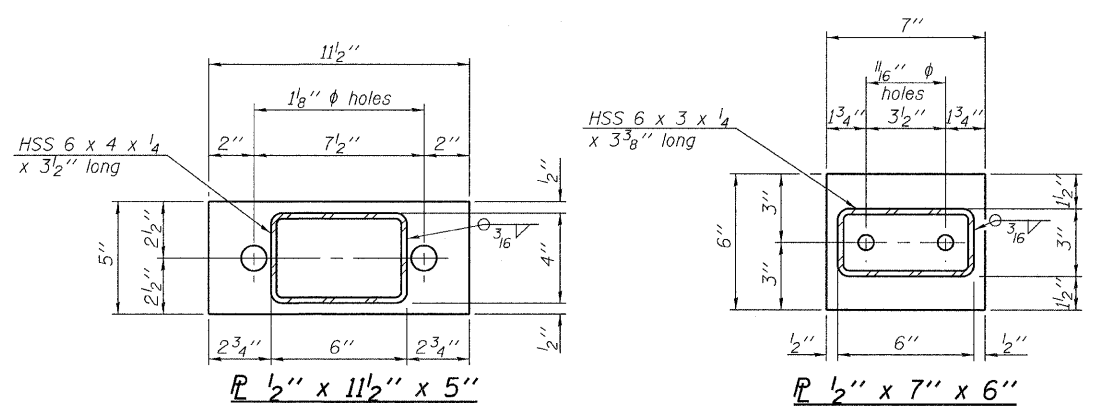
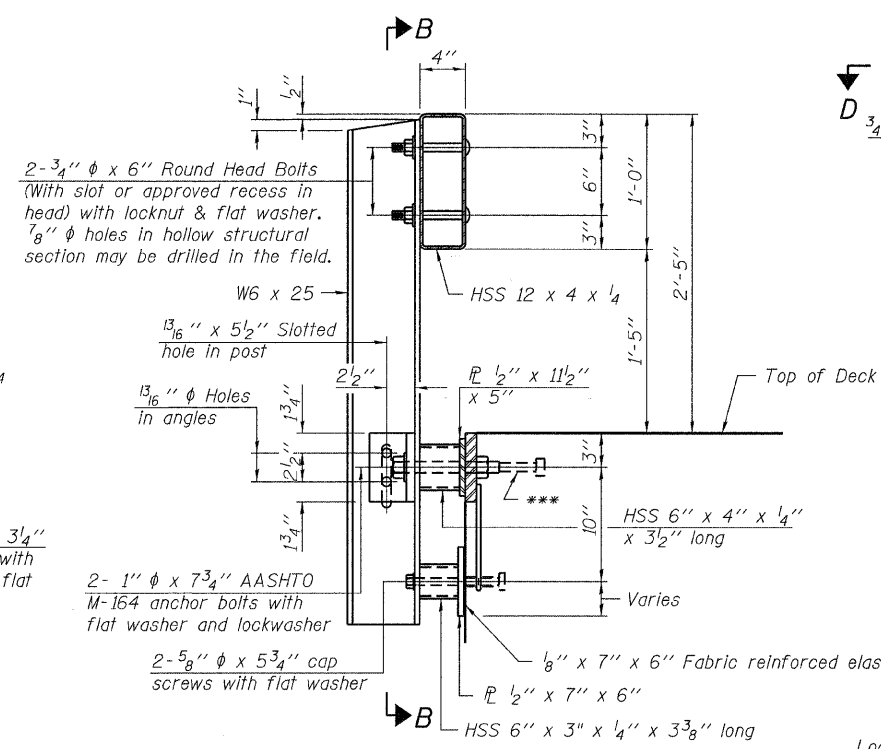


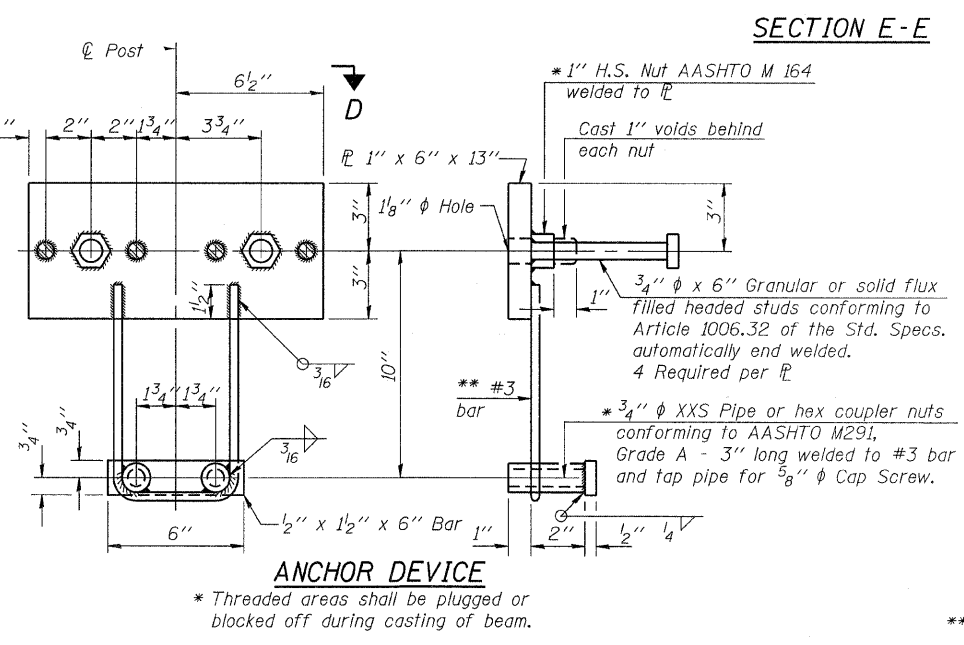
**VIEW A-A
ROUND HEAD BOLT**



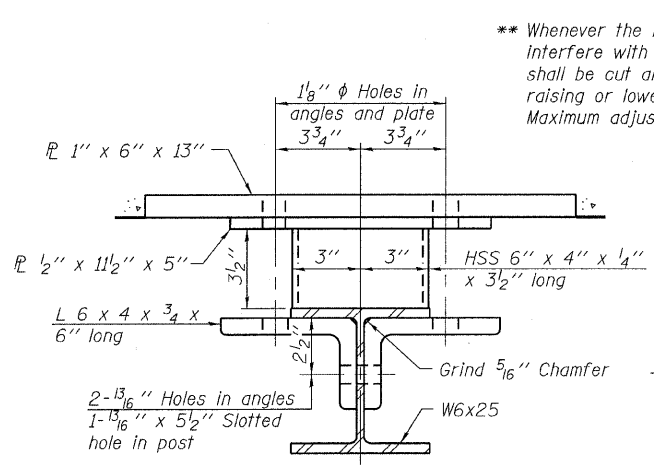
SECTION C-C



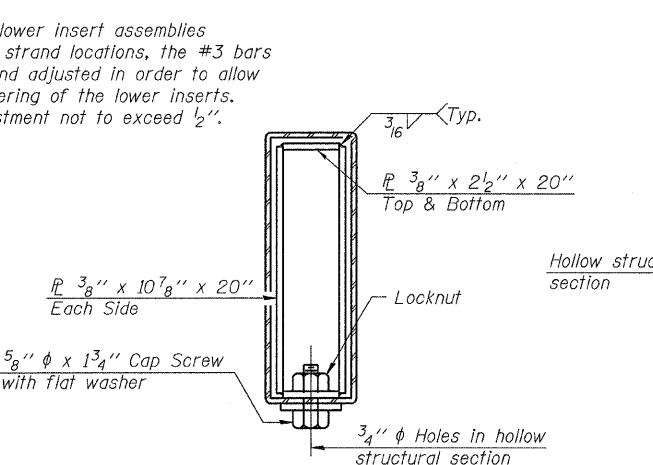
SECTION AT RAILING POST



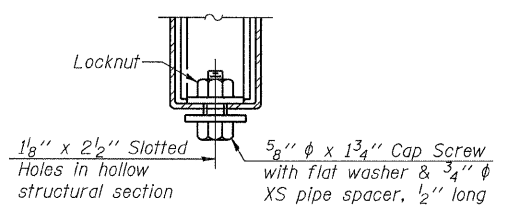
ANCHOR DEVICE



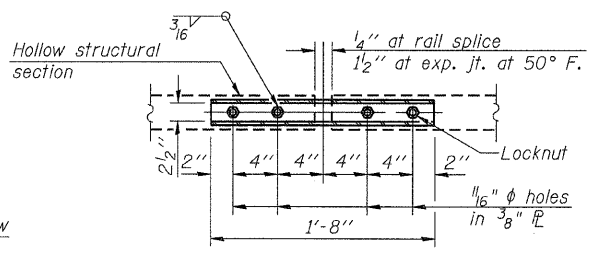
SECTION C-C



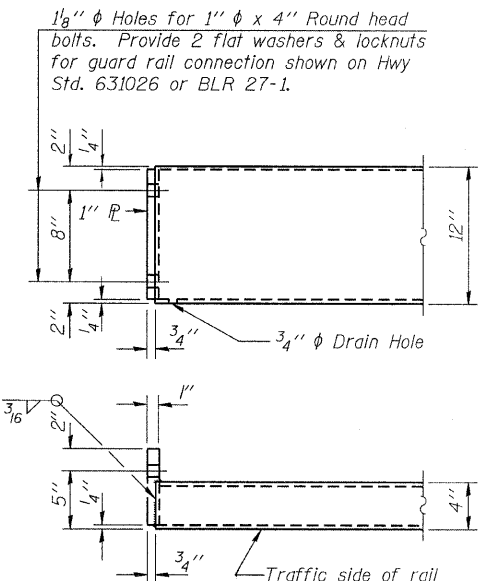
SECTIONS AT RAIL SPLICE



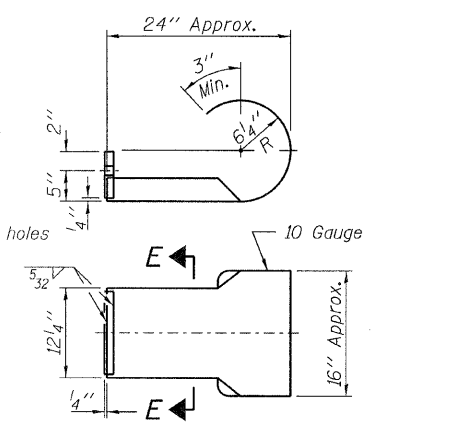
**RAIL SPLICE CONNECTION
AT EXPANSION JT.**



**PLAN-BOTT. SPLICE
TYPICAL**



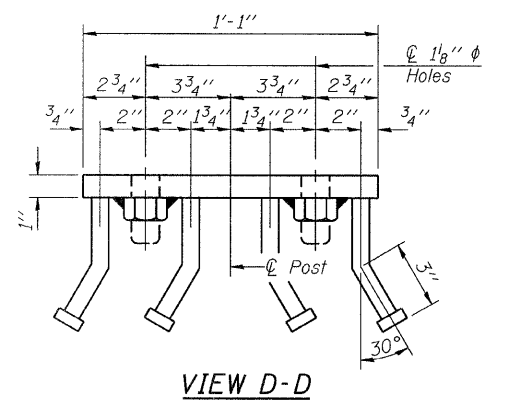
END OF RAIL DETAILS



**SECTION E-E
CURLLED END SECTION DETAILS**

Note: Cost of curled end sections shall be included with the Steel Railing. (4 Required)

Notes:
All field drilled holes shall be coated with an approved zinc rich paint before erection.
For multi-span bridges, sufficient 1/4" x 6" x 1'-2" galvanized steel shims shall be provided to align rail between adjacent spans. Cost included with Steel Railing, Type S-1.
All steel rail elements shall be galvanized according to Article 509.05 of the Standard Specifications.
*** The studs of the anchor devices shall be placed below the top reinforcement bars and the outermost longitudinal reinforcement bar shall be placed directly above the studs of the rail post anchor device.



VIEW D-D

BILL OF MATERIAL

Item	Unit	Quantity
Steel Railing, Type S-1	Foot	102

R-23A 7-1-10 (10'-9" Maximum Post Spacing)

FILE NAME = 110175-sht-bridge.dgn	USER NAME =	DESIGNED - J.W.F.	REVISED -
HAMPTON, LENZINI AND RENWICK, INC.		CHECKED - S.W.M.	REVISED -
1045 STEVENSON DRIVE, SUITE 201 SPRINGFIELD, ILLINOIS 62703	PLOT SCALE =	DRAWN - D.T.M.	REVISED -
ILLINOIS PROFESSIONAL DESIGN FIRM LEV. REG. NO. 000000000	PLOT DATE = 3/7/2012	CHECKED - S.W.M.	REVISED -

STATE OF ILLINOIS
CLAY COUNTY HIGHWAY DEPARTMENT

STEEL RAILING, TYPE S-1
STRUCTURE NO. 013-3238

SHEET NO. 6 OF 11 SHEETS

T.R.	SECTION	COUNTY	TOTAL SHEETS	SHEET NO.
355	07-11130-00-BR	CLAY	29	24
STANFORD ROAD DISTRICT		CONTRACT NO. 95667		
(ILLINOIS) FED. AID PROJECT BROS-00250701				