

**INDEX OF SHEETS**

- 1 COVER SHEET
- 2 GENERAL NOTES, HIGHWAY STANDARDS, & TYPICAL SECTION
- 3 SUMMARY OF QUANTITIES & QUANTITY SCHEDULES
- 4 PLAN AND PROFILE
- 5-11 BRIDGE PLANS
- 12-13 CROSS SECTIONS
- IDOT STANDARDS - SEE SHEET 2

# ENGINEERING PLANS FOR TR 282 BRIDGE REPLACEMENT

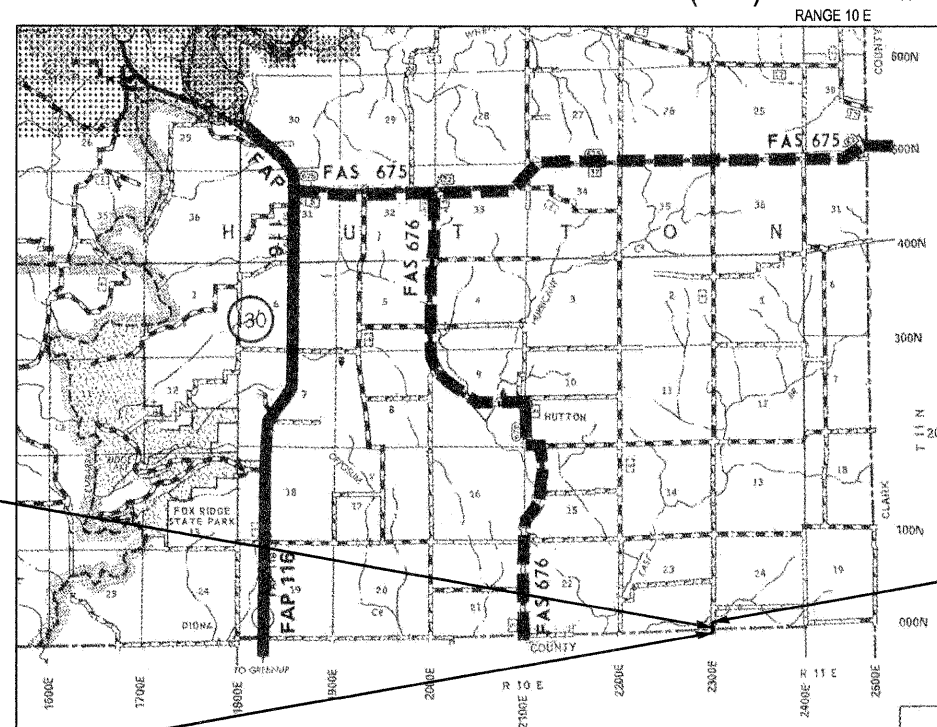
HIGHWAY BRIDGE PROGRAM

COLES COUNTY  
HUTTON TOWNSHIP  
ILLINOIS

JOB NUMBER : C-97-046-12  
SECTION NUMBER : 07-05136-00-BR  
PROJECT NUMBER : BROS-029(293)



LOCATION OF SECTION INDICATED THUS: - [Black Box]

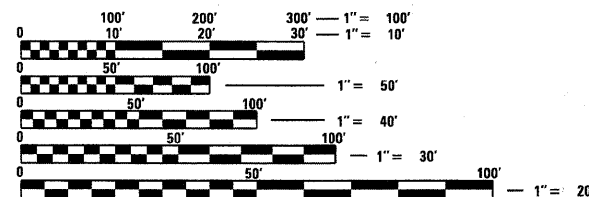


STRUCTURE REPLACMENT  
OVER CREEK  
DISTRICT 7  
STATION 6+00.00  
EXISTING SN: 015-3170  
PROPOSED SN: 015-3427

PROJECT ENDS  
STA 7+80.00

PROJECT BEGINS  
STA 4+80.00

LOCATION MAP  
1 0 1  
1" = 1 MILE



FULL SIZE PLANS HAVE BEEN PREPARED USING STANDARD ENGINEERING SCALES. REDUCED SIZED PLANS WILL NOT CONFORM TO STANDARD SCALES. IN MAKING MEASUREMENTS ON REDUCED PLANS, THE ABOVE SCALES MAY BE USED.

APPROVED	02/22	20 12
	<i>Richard A. Johnson</i>	COUNTY ENGINEER
APPROVED	2/24	20 12
	<i>Ray W. Wainwright</i>	ROAD COMMISSIONER
PASSED	2-28	20 12
	<i>Maureen East</i>	DISTRICT SEVEN ENGINEER OF LOCAL ROADS & STREETS
Releasing For Bid Based on Limited Review	2/28	20 12
	<i>Daniel Feuerborn</i>	DEPUTY DIRECTOR OF HIGHWAYS, REGION FOUR ENGINEER
		STATE OF ILLINOIS DEPARTMENT OF TRANSPORTATION



*Daniel Feuerborn*  
Date  
License Expires 11-30-2012



PROJECT ENGINEER: ADAM GROVES

LENGTH = 300.00 FT = 0.057 MILE  
FUNCTIONAL CLASSIFICATION = LOCAL ROAD  
ADT = 50  
DESIGN SPEED = 50 MPH

**ESI** ESI CONSULTANTS, LTD  
283 WINDSOR ROAD  
CHARLESTON, IL 61920  
(217) 348-1500  
WWW.ESICONSULTANTS.LTD.COM

ILLINOIS DEPARTMENT OF PROFESSIONAL REGULATION REGISTRATION #184-003685  
\*\* THIS DOCUMENT IS THE PROPERTY OF ESI CONSULTANTS, LTD. AND NO PART HEREIN SHALL BE USED \*\*  
EXCEPT FOR THIS SPECIFIC PROJECT WITHOUT THE WRITTEN CONSENT OF ESI CONSULTANTS, LTD.