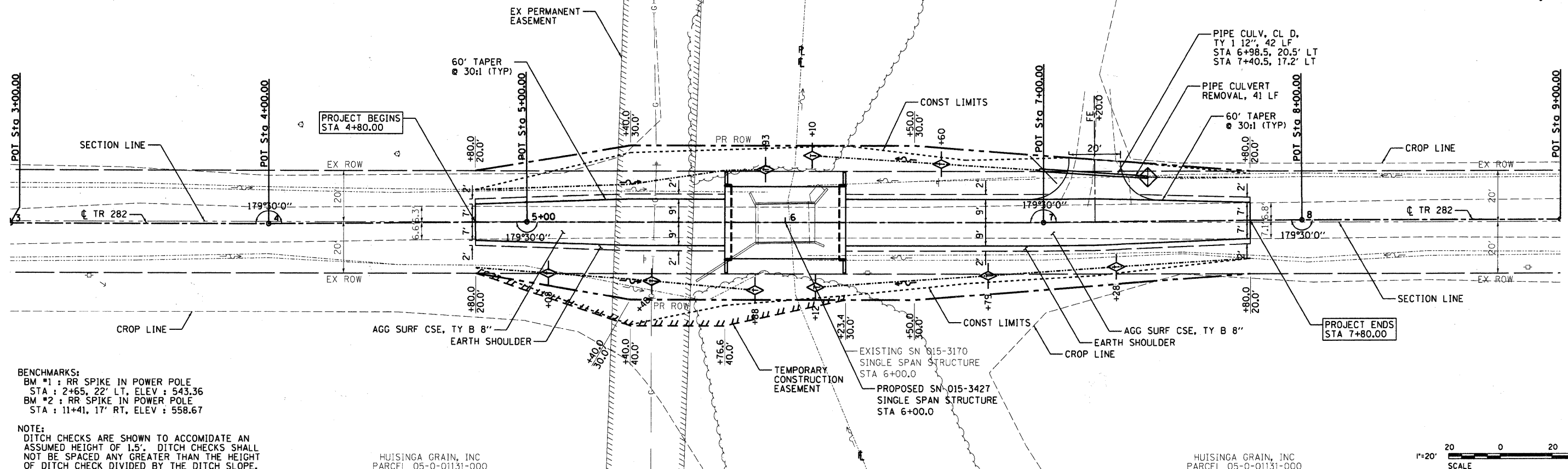


BRANDON M. WADDELL
PARCEL 05-0-01096-001

DANIEL F. LEE
PARCEL 05-0-01096-000

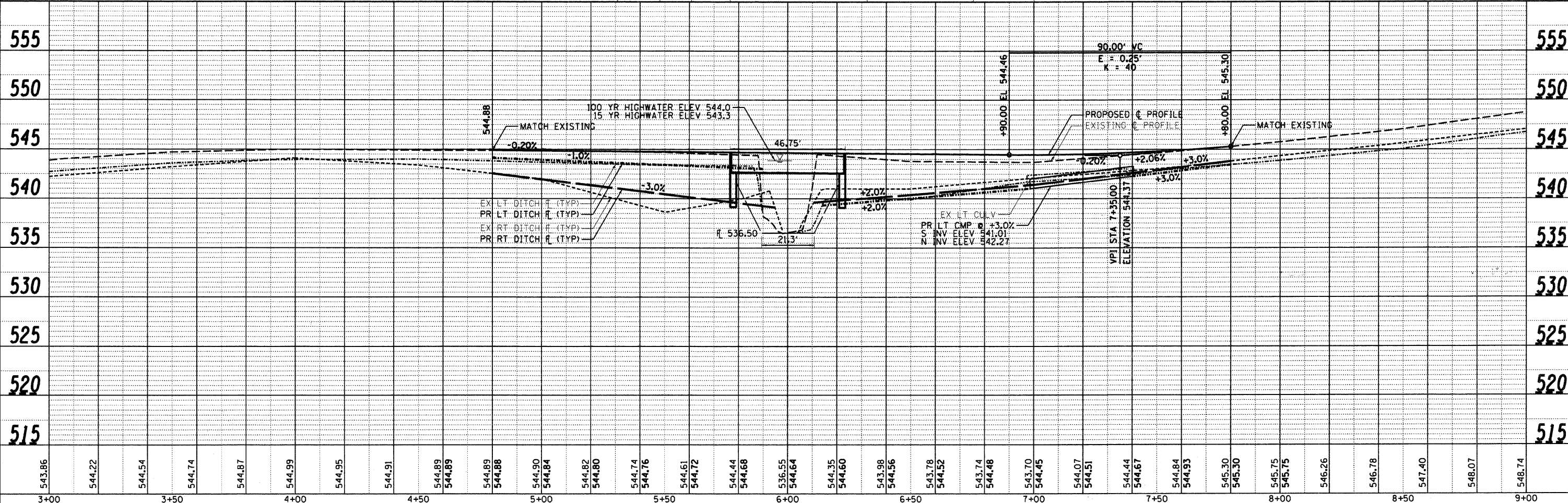
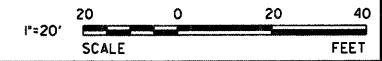


BENCHMARKS:
 BM #1 : RR SPIKE IN POWER POLE
 STA : 2+65, 22' LT, ELEV : 543.36
 BM #2 : RR SPIKE IN POWER POLE
 STA : 11+41, 17' RT, ELEV : 558.67

NOTE:
 DITCH CHECKS ARE SHOWN TO ACCOMMODATE AN ASSUMED HEIGHT OF 1.5'. DITCH CHECKS SHALL NOT BE SPACED ANY GREATER THAN THE HEIGHT OF DITCH CHECK DIVIDED BY THE DITCH SLOPE.

HUISINGA GRAIN, INC
PARCEL 05-0-01131-000

HUISINGA GRAIN, INC
PARCEL 05-0-01131-000



543.86	544.22	544.54	544.74	544.87	544.99	544.95	544.91	544.89	544.89	544.89	544.88	544.90	544.84	544.82	544.80	544.74	544.76	544.61	544.72	544.44	544.68	536.55	544.64	544.35	544.60	543.98	544.56	543.78	544.52	543.74	544.48	543.70	544.45	544.07	544.51	544.44	544.67	544.84	544.93	545.30	545.30	545.75	545.75	546.26	546.78	547.40	548.07	548.74		
3+00		3+50		4+00		4+50		5+00		5+50		6+00		6+50		7+00		7+50		8+00		8+50		9+00																										

ESI CONSULTANTS, LTD
 753 WINDSOR ROAD
 CHARLESTON, IL 61920
 (217) 546-9900
 WWW.ESICONSULTANTS.LTD.COM
 ILLINOIS DEPARTMENT OF PROFESSIONAL REGULATION REGISTRATION #164-003885

**COLES COUNTY
HIGHWAY DEPARTMENT**

NO.	DATE	DESCRIPTION OF REVISIONS	NO.	DATE	DESCRIPTION OF REVISIONS

ESI PROJECT NO: 10.355
 ENGR: ADG
 FILE: 04_TR 282_PinPr.f
 DRAWN BY: ADG
 DATE: 02-21-2012
 QCQA:

**TR 282
COLES COUNTY**

PLAN AND PROFILE
 STA 4+80.00 TO STA 7+80.00
 SHEET 1 OF 1
DRAWING NO. 04
 OF 13

PROJECT: 04-TR 282, 02/21/2012
 PROJECT LOCATION: COLES COUNTY, ILLINOIS
 PROJECT DESCRIPTION: HIGHWAY DEPARTMENT
 PROJECT DRAWN BY: ADG
 PROJECT CHECKED BY: ADG
 PROJECT DATE: 02/21/2012