

INDEX OF SHEETS

- 1 Cover Sheet
- 2 Summary of Quantities, General Notes, and Typical Sections
- 3 Plan and Profile
- 4 Horizontal Layout
- 5-11 Station Cross Sections
- 12 Stormwater Pollution Prevention & Erosion Control Plan
- 13-19 Bridge Plans

LIST OF STANDARDS

- | | |
|--------------------|---|
| Standard 000001-06 | Standard symbols, abbreviations and patterns |
| Standard 280001-06 | Temporary erosion control systems |
| Standard 515001-03 | Name plate for bridges |
| Standard 542401-01 | Metal End Section for Pipe Culverts |
| Standard 630301-05 | Shoulder Widening for Type 1 (Special) Guardrail Terminals |
| Standard 631032-07 | Traffic Barrier Terminal Type 6A |
| Standard 635006-03 | Reflector and Terminal Marker Placement |
| Standard 701011-02 | Off-road moving operations, 2-l, 2-w, day only, for speeds > 45 mph |
| Standard 701301-04 | Lane closure, 2-l, 2-w, short time operations |
| Standard 701901-02 | Traffic control devices |
| Standard BLR-21-9 | Typical application of traffic control devices for Construction on Rural Local Highways |
| Standard BLR-22-7 | Typical application of traffic control devices 2-l, 2-w, rural, Road closed to Thru Traffic |

ROADWAY CLASSIFICATION: MAJOR COLLECTOR, (NON-URBAN)
 2031 ADT = 900
 DESIGN SPEED: 50 MPH
 DESIGN GUIDELINES: RURAL
 VARIANCES GRANTED: 4 FOOT SHOULDERS
 COMMITMENTS: NONE

JOINT UTILITY LOCATING INFORMATION FOR EXCAVATORS

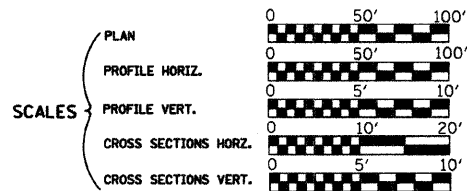
J.U.L.I.E. Telephone No. Toll Free 1-800-892-0123

CONTRACT NO. : 95680



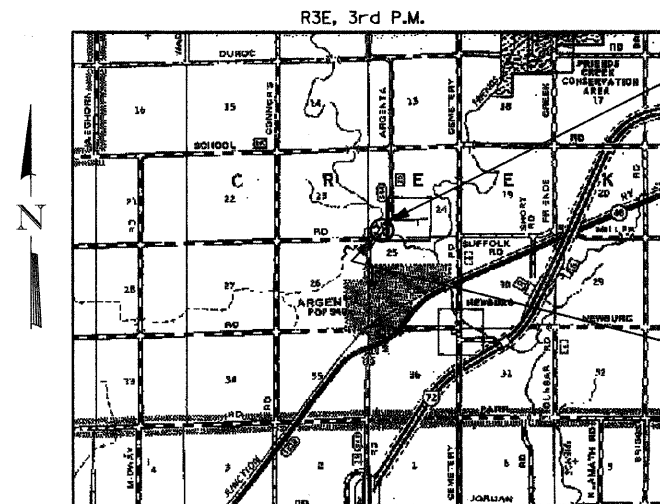
345 EAST ASH AVENUE, SUITE B
 DECATUR, ILLINOIS 62526
 PH. 217-875-4800

STATE OF ILLINOIS
 DEPARTMENT OF TRANSPORTATION
 DIVISION OF HIGHWAYS
**PLANS FOR PROPOSED
 LOCAL AGENCY IMPROVEMENT**



**HIGHWAY BRIDGE PROGRAM
 C.H. 25 (FAS 544) OVER
 KICKAPOO CREEK
 SECTION 06-00213-00-BR
 MACON COUNTY
 PROJECT BRS-0544(104)**

C-97-081-12



IMPROVEMENT ENDS
 STA. 23+10.00

EXIST. STR. NO. 058-3000
 PROP. STR. NO. 058-3394

IMPROVEMENT BEGINS
 STA. 16+00.00

IMPROVEMENT CONSISTS OF THE REMOVAL OF A TWO SPAN CONCRETE DECK ON WF BEAM SUPERSTRUCTURE ON CLOSED TIMBER ABUTMENTS WITH TIMBER WINGWALLS AND TIMBER PIER, 0-0 DECK = 25'-2", BK.-BK. ABUTMENTS = 64'-6" AND THE CONSTRUCTION OF A SINGLE SPAN PRECAST PRESTRESSED CONCRETE DECK BEAM BRIDGE ON CONCRETE SPILL THRU ABUTMENTS. TOTAL LENGTH = 99'-4 3/4", WIDTH = 28'-0" O.-O. DECK AND NECESSARY APPROACH ROADWAY WORK.

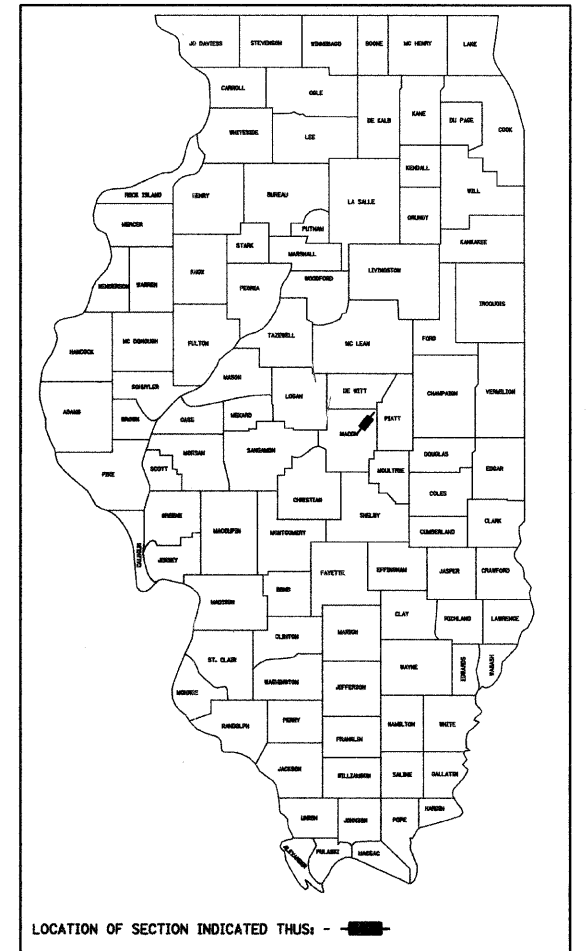
LAYOUT

Approximate Scale: scale miles

Total and Net Length of Improvement 710.00 Feet = 0.134 Miles

ROUTE NO.	SECTION	COUNTY	TOTAL SHEETS	SHEET NO.
C.H. 25	06-00213-00-BR	MACON	19	1
FED. ROAD DIST. NO.		ILLINOIS PROJECT: BRS-0544(104)		

CONTRACT NO. 95680



APPROVED FEBRUARY 29, 2012

 COUNTY ENGINEER

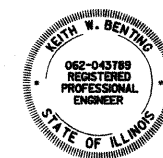
PASSED April 17, 2012

 DISTRICT SEVEN ENGINEER OF LOCAL ROADS & STREETS

RELEASING FOR BID BASED ON LIMITED REVIEW April 17, 2012

 DEPUTY DIRECTOR OF HIGHWAYS, REGION FOUR ENGINEER

STATE OF ILLINOIS
 DEPARTMENT OF TRANSPORTATION



EXP. 11/30/2013

Illinois Professional No. 43789

3/1/2012
 Date