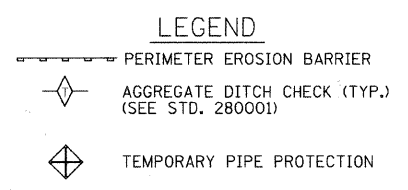
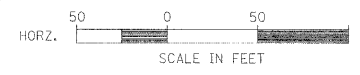
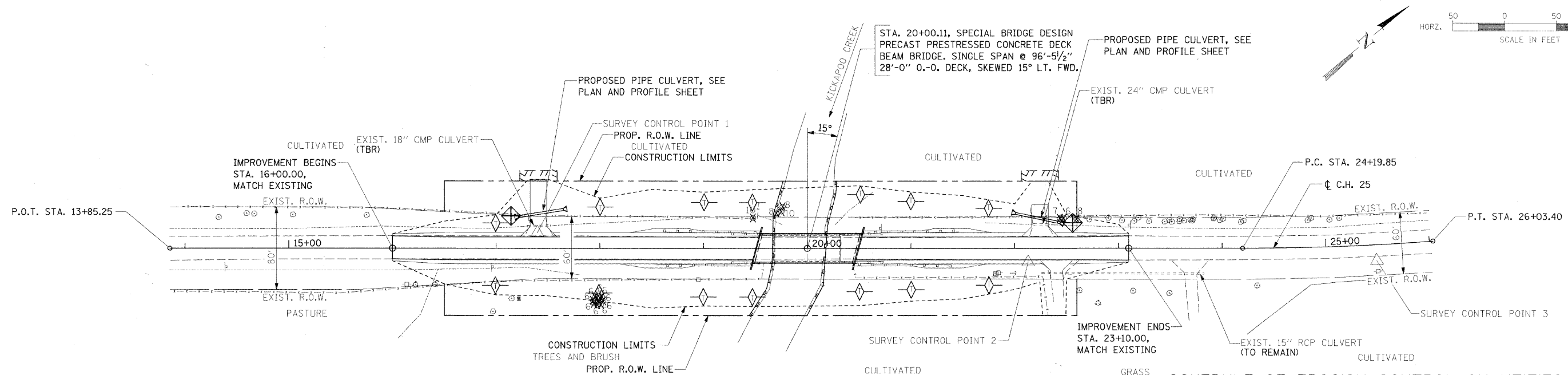


DATE	
BY	
REVISION	
NO.	
DATE	
BY	
REVISION	
NO.	
DATE	
BY	
REVISION	
NO.	

DATE	
BY	
REVISION	
NO.	
DATE	
BY	
REVISION	
NO.	
DATE	
BY	
REVISION	
NO.	



STORM WATER POLLUTION PREVENTION PLAN

- DESCRIPTION OF INTENDED SEQUENCE FOR MAJOR CONSTRUCTION ACTIVITIES:**
1. INSTALLATION OF PERIMETER EROSION BARRIER.
 2. REMOVAL OF EXISTING STRUCTURE.
 3. EXCAVATION WILL BE COMPLETED ALONG THE ENTIRE LENGTH OF THE JOB TO REMOVE THE EXISTING ROADWAY AND GRADE THE PROPOSED DITCHES.
 4. NECESSARY EMBANKMENT WILL BE PLACED ALONG THE ENTIRE LENGTH OF THE JOB FOR THE PROPOSED ROADWAY.
 5. PLACEMENT, MAINTENANCE, REMOVAL AND PROPER CLEAN-UP OF TEMPORARY EROSION CONTROL ITEMS, SUCH AS AGGREGATE DITCH CHECKS, TEMPORARY SEEDING AND OTHER MISCELLANEOUS EROSION CONTROL MEASURES. INSTALLATION OF CULVERTS AND TEMPORARY PIPE PROTECTION.
 6. CONSTRUCT NEW BRIDGE SUBSTRUCTURE UNITS.
 7. PLACEMENT OF PERMANENT EROSION CONTROL ITEMS, INCLUDING RIPRAP AND SEEDING.
 8. CONSTRUCT NEW BRIDGE SUPERSTRUCTURE AND APPROACH ROADWAY.
 9. FINAL GRADING AND OTHER MISCELLANEOUS ITEMS.

SCHEDULE OF EROSION CONTROL QUANTITIES

- SEEDING, CLASS 2**
AREA INSIDE OF CONSTRUCTION LIMITS, LESS ROADWAY.
TOTAL = 1.00 ACRES
- NITROGEN FERTILIZER NUTRIENT**
TOTAL = 90 POUNDS
- PHOSPHORUS FERTILIZER NUTRIENT**
TOTAL = 90 POUNDS
- POTASSIUM FERTILIZER NUTRIENT**
TOTAL = 90 POUNDS
- MULCH, METHOD 2**
TOTAL = 1.00 ACRES
- EARTH EXCAVATION FOR EROSION CONTROL**
TOTAL = 42 CU. YD.
- TEMPORARY EROSION CONTROL SEEDING**
100 LBS/ACRE X 1.00 ACRES = 100 POUNDS
- AGGREGATE DITCH CHECK**
STA. 17+00, LT. & RT. = 3 TON
STA. 18+00, LT. & RT. = 3 TON
STA. 19+00, LT. & RT. = 3 TON
STA. 19+50, LT. & RT. = 3 TON
STA. 20+50, LT. & RT. = 3 TON
STA. 21+00, LT. & RT. = 3 TON
STA. 21+75, LT. & RT. = 3 TON
TOTAL = 21 TON
- PERIMETER EROSION BARRIER**
TO BE CONSTRUCTED AT LOCATIONS SHOWN ON PLANS. LAYOUT MAY VARY AS DIRECTED BY THE ENGINEER.
TOTAL = 272 FOOT
- INLET AND PIPE PROTECTION**
30.6' LT., STA. 17+21.4 = 1 EACH
24.8' LT., STA. 22+43.9 = 1 EACH
TOTAL = 2 EACH
- STONE RIPRAP, CLASS A4**
SOUTH BRIDGE ABUT. SLOPE = 522 SQ YD
NORTH BRIDGE ABUT. SLOPE = 376 SQ YD
TOTAL = 898 SQ YD
- FILTER FABRIC**
TOTAL = 898 SQ YD

FILE NAME =	USER NAME = #USER#	DESIGNED - MJP	REVISED -	STATE OF ILLINOIS DEPARTMENT OF TRANSPORTATION	STORM WATER POLLUTION PREVENTION AND EROSION CONTROL PLAN	RT.	SECTION	COUNTY	TOTAL SHEETS	SHEET NO.	
#FILE#	PLOT SCALE = #SCALE#	DRAWN - REZ	REVISED -			CH 25	06-00213-00-BR	MACON	19	12	
	PLOT DATE = #DATE#	CHECKED - KWB	REVISED -			CONTRACT NO. 95680					
		DATE -	REVISED -			FED. ROAD DIST. NO. ILLINOIS FED. AID PROJECT: BRS-0544004					

SCALE: AS SHOWN SHEET NO. 1 OF 1 SHEETS STA. 13+85.25 TO STA. 26+03.40