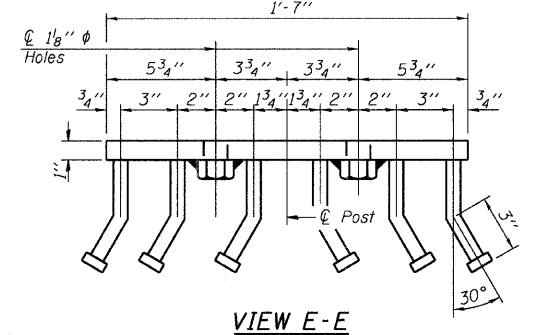
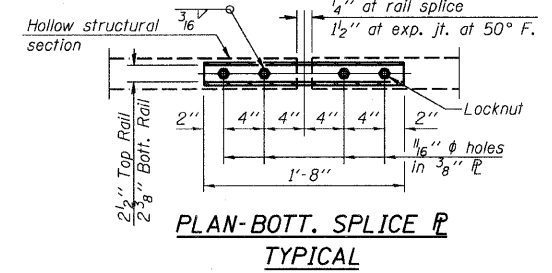
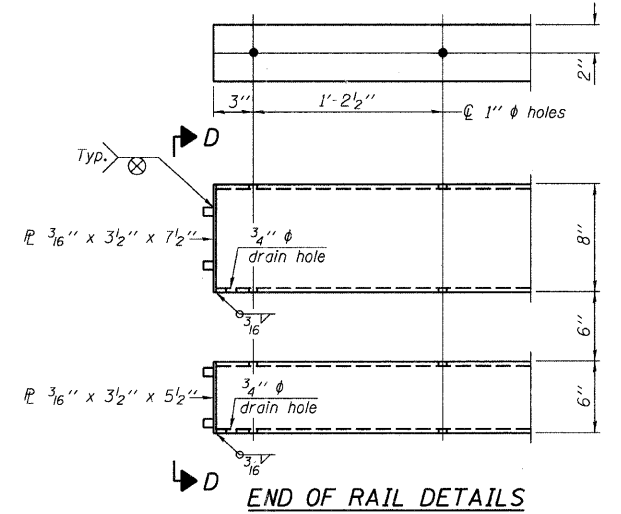
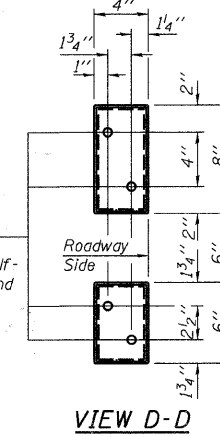
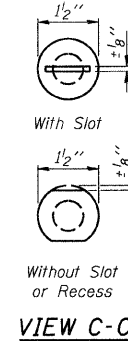
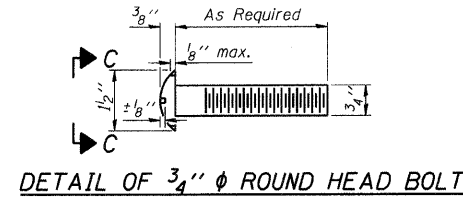
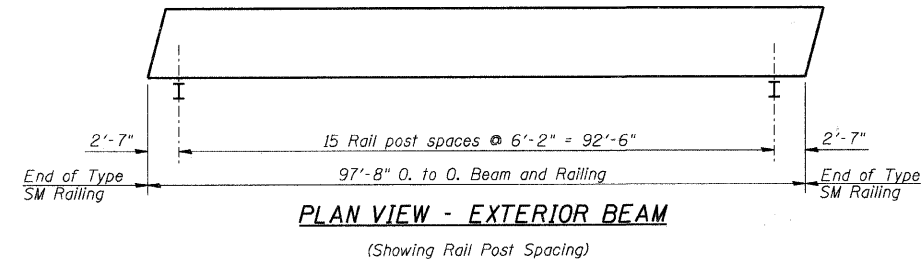


ROUTE NO.	SECTION	COUNTY	TOTAL SHEETS	SHEET NO.
C.H. 25	06-00213-00-BR	MACON	19	16
FED. ROAD DIST. NO.	ILLINOIS	PROJECT: BRS-0544(104)		

CONTRACT NO. 95680



Notes:

All field drilled holes shall be coated with an approved zinc rich paint before erection.

For multi-span bridges, sufficient 1/4" x 6" x 1'-2" galvanized steel shims shall be provided to align rail between adjacent spans. Cost included with Steel Railing, Type SM.

All steel rail members shall be galvanized according to Article 509.05 of the Standard Specifications.

*** The studs of the anchor devices shall be placed below the top reinforcement bars and the outermost longitudinal reinforcement bar shall be placed directly above the studs of the rail post anchor device.

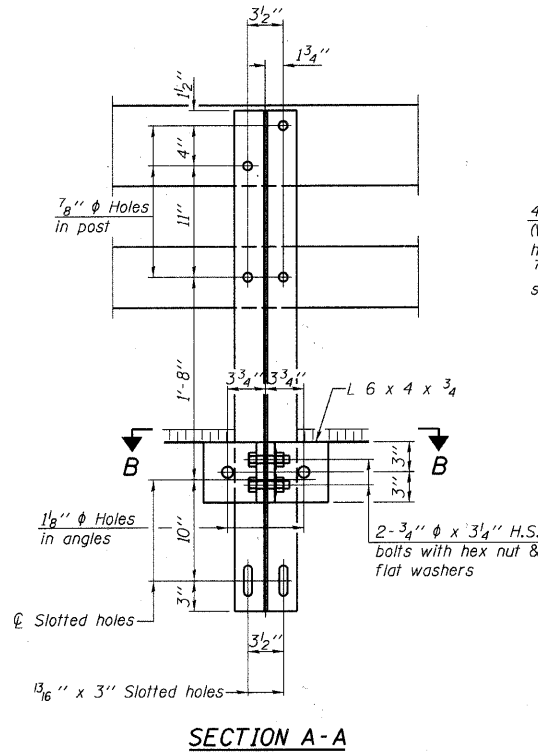
BILL OF MATERIAL

Item	Unit	Quantity
Steel Railing, Type SM	Foot	196

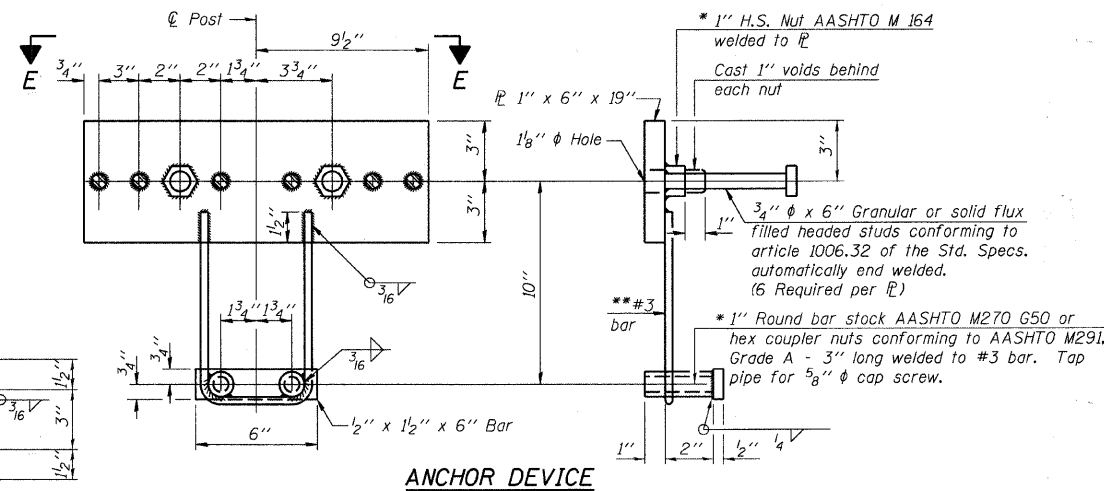
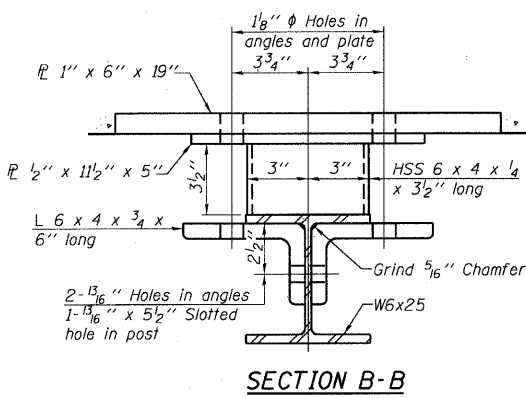
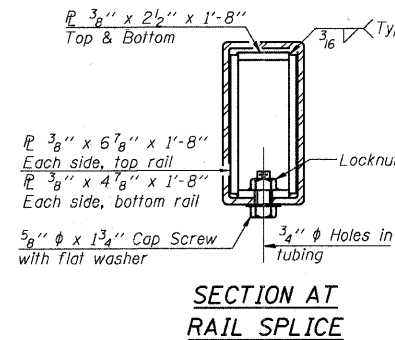
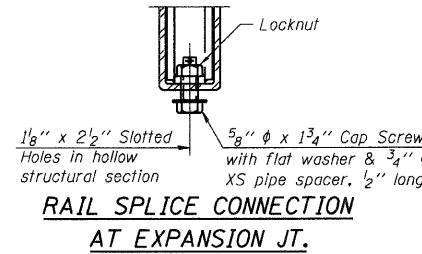
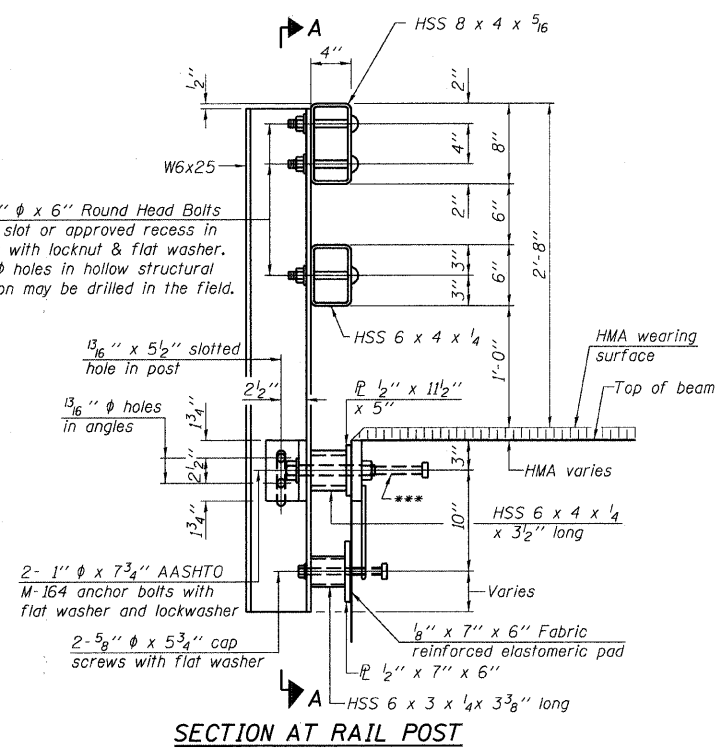
STEEL RAILING, TYPE SM WITH HOT-MIX ASPHALT WEARING SURFACE
STRUCTURE NO. 058-3394

STEEL RAILING, TYPE SM

Date	Designed MJP	C.H. 25 OVER KICKAPOO CREEK SECTION 06-00213-00-BR MACON COUNTY STA. 20+00.11 PROP. STR. NO. 058-3394	Sheet No.
Revisions	Drawn REZ		4
	Checked KWB		of 7
	Approved KWB		
Prepared by:	URS 345 East Ash Avenue Decatur, IL 62526		URS Job No. 36431926

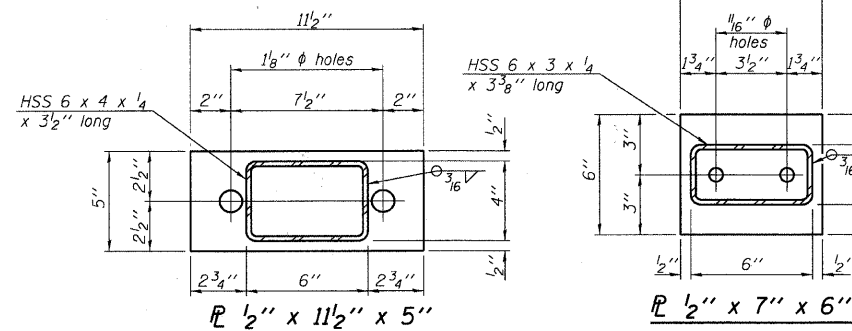


4-3/4" phi x 6" Round Head Bolts (With slot or approved recess in head) with locknut & flat washer. 7/8" phi holes in hollow structural section may be drilled in the field.



*Threaded areas shall be plugged or blocked off during casting of beam. Galvanized after fabrication.

**Whenever the lower insert assemblies interfere with strand locations, the #3 bars shall be cut and adjusted in order to allow raising or lowering of the lower inserts. Maximum adjustment not to exceed 1/2".



R-34HMAWS 7-1-10 (6'-3" Maximum Post Spacing) (1/4" minimum to 3/8" maximum HMA thickness)