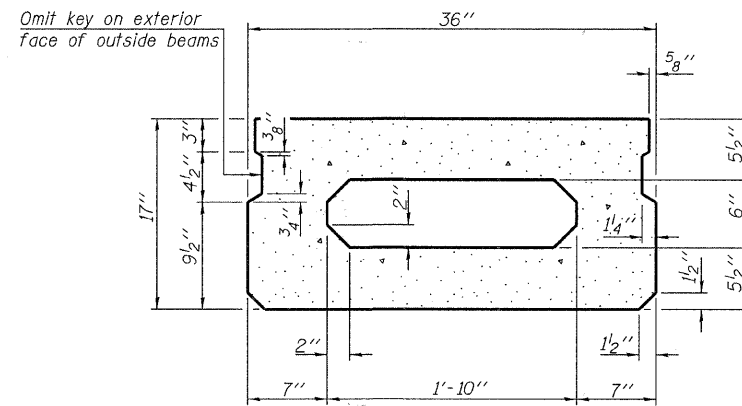
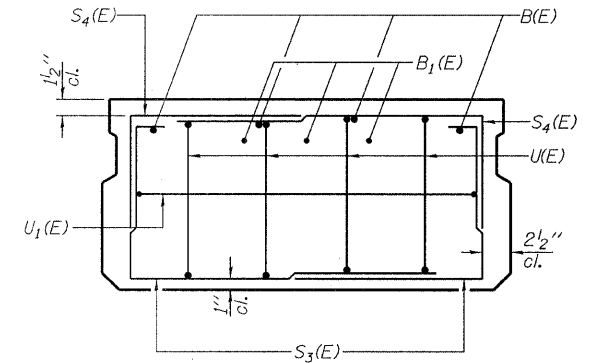


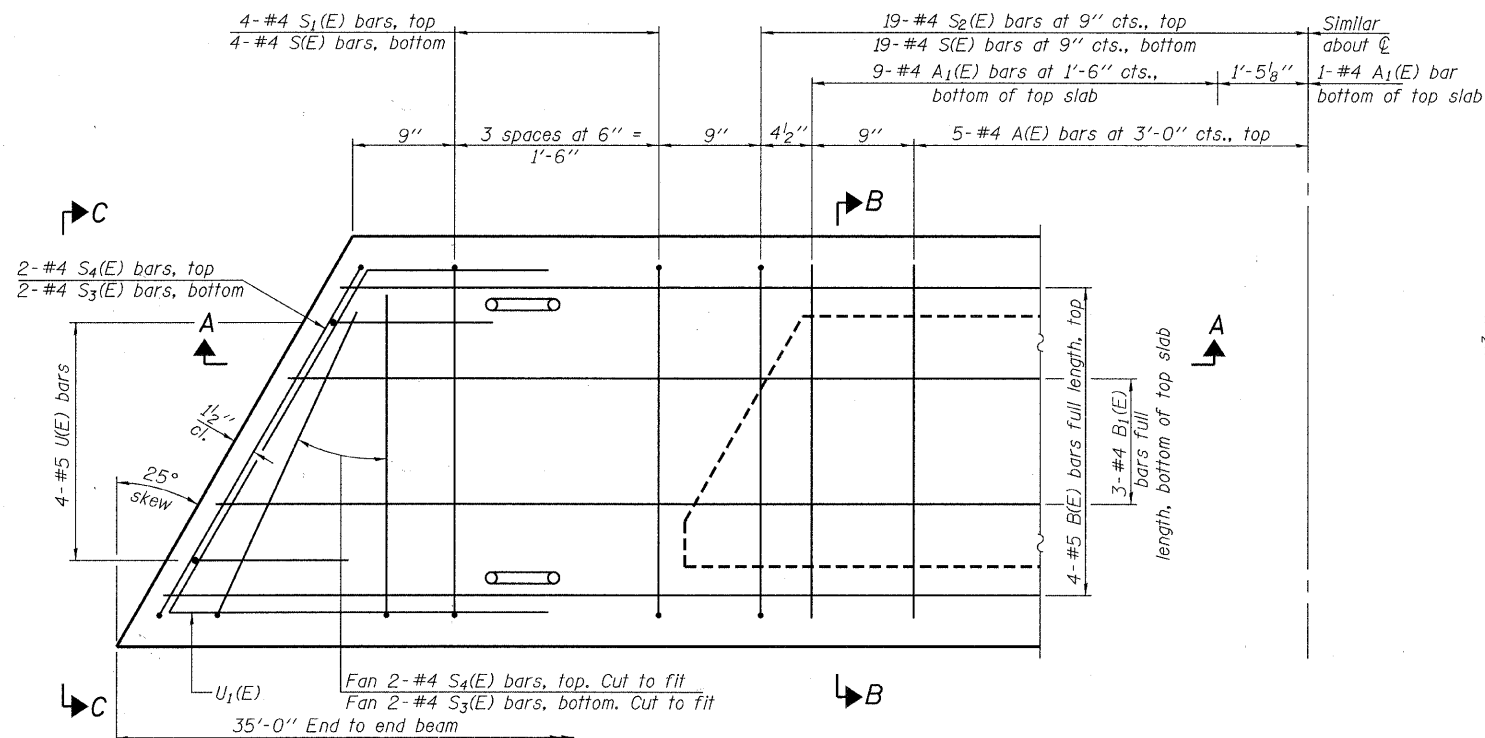
SECTION A-A



SECTION B-B
(Showing dimensions)

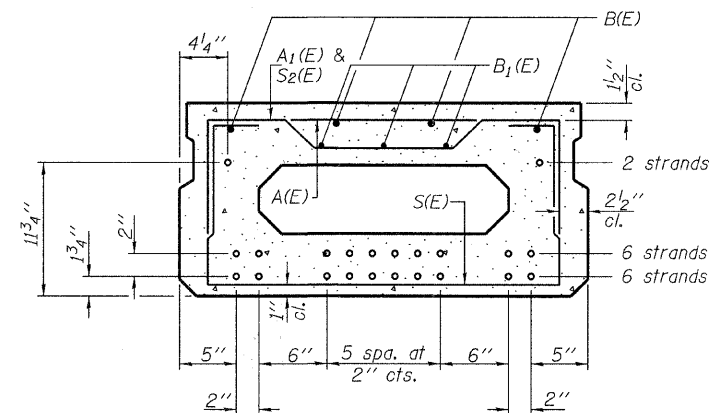


VIEW C-C



PLAN VIEW

Note: Spacing of S(E) and S2(E) bars may be adjusted up to 4" in the immediate area of the transverse tie diaphragms to miss the block outs for the transverse ties.



SECTION B-B
(Showing reinforcement and permissible strand locations)

Note: Place the number of strands specified in each row symmetrically about the centerline of beam in the permissible strand locations shown.

BAR LIST
ONE BEAM ONLY
(For information only)

Bar	No.	Size	Length	Shape
A(E)	10	#4	2'-7"	—
A1(E)	19	#4	2'-10"	~
B(E)	4	#5	34'-8"	—
B1(E)	3	#4	34'-8"	—
S(E)	46	#4	5'-9"	□
S1(E)	8	#4	4'-3"	□
S2(E)	38	#4	4'-6"	□
S3(E)	8	#4	3'-11"	□
S4(E)	8	#4	3'-2"	□
U(E)	8	#5	3'-8"	□
U1(E)	2	#4	6'-6"	□

Note: See sheet 4 & 5 of 12 for additional details and Bill of Material.

MINIMUM BAR LAP

#4 bar = 2'-0"
#5 bar = 2'-6"

PD-1736-L

7-1-10

FILE NAME = 110368-ah-t-bridge.dgn	USER NAME =	DESIGNED - D.W.T.	REVISED -	STATE OF ILLINOIS CRAWFORD COUNTY HIGHWAY DEPARTMENT	17" x 36" PPC DECK BEAM - ALL SPANS STRUCTURE NO. 017-3061	C.H.	SECTION	COUNTY	TOTAL SHEETS	SHEET NO.	
HAMPTON, LENZINI AND RENWICK, INC. 3545 STEVENSON DRIVE, SUITE 201 SPRINGFIELD, ILLINOIS 62703	PLOT SCALE =	CHECKED - S.M.S.	REVISED -			3	11-00096-00-BR	CRAWFORD	16	7	
ILR ILLINOIS PROFESSIONAL DESIGN FIRM L.S./P.E./S.E. CORP. 184-000919	PLOT DATE = 3/29/2012	DRAWN - D.A.B.	REVISED -			CONTRACT NO. 95682					
		CHECKED - S.W.M.	REVISED -			ILLINOIS FED. AID PROJECT					