

PI Sta 101+52.46
 NORTHING: 100017.650
 EASTING: 101392.980

PROP. CURVE DATA
 PI STA. = 101+52.46
 $\Delta = 62^\circ 26' 00''$ (RT)
 $D = 6^\circ 02' 50''$
 $R = 947.48'$
 $T = 574.19'$
 $L = 1,032.44'$
 $E = 160.41'$
 $e = 6.50\%$ (EXISTING, OBTAINED FROM 1940 PLANS)
 S.E. ATTAINED STA. 94+74.09 TO STA. 96+82.53
 P.C. STA. = 95+78.27
 P.T. STA. = 106+10.71

80+00 | 95+00

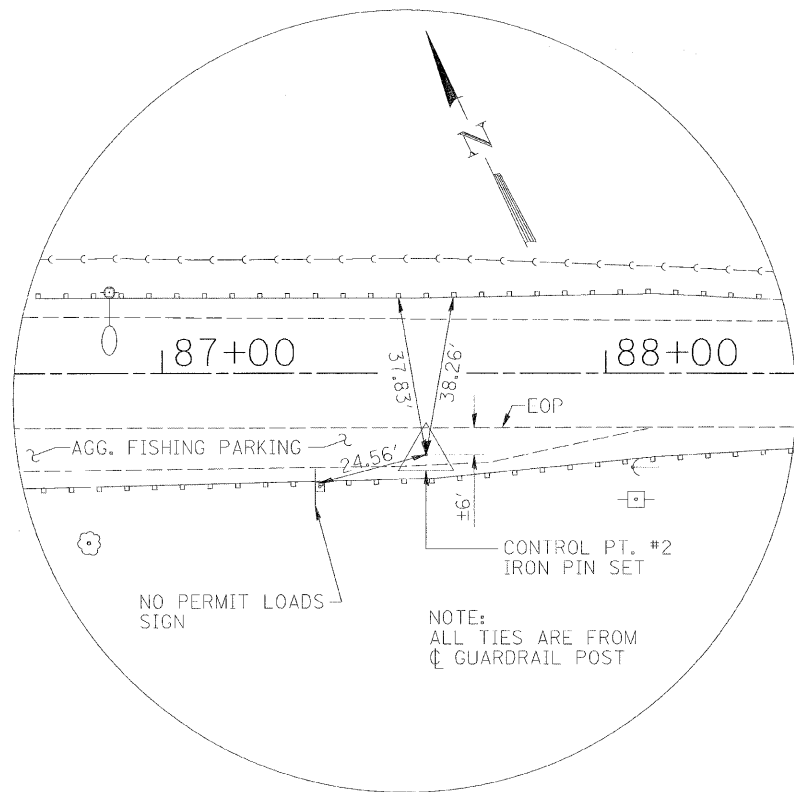
POT Sta 80+00.00
 NORTHING: 100018.769
 EASTING: 99240.521

PC Sta 95+78.27
 NORTHING: 100017.949
 EASTING: 100818.791

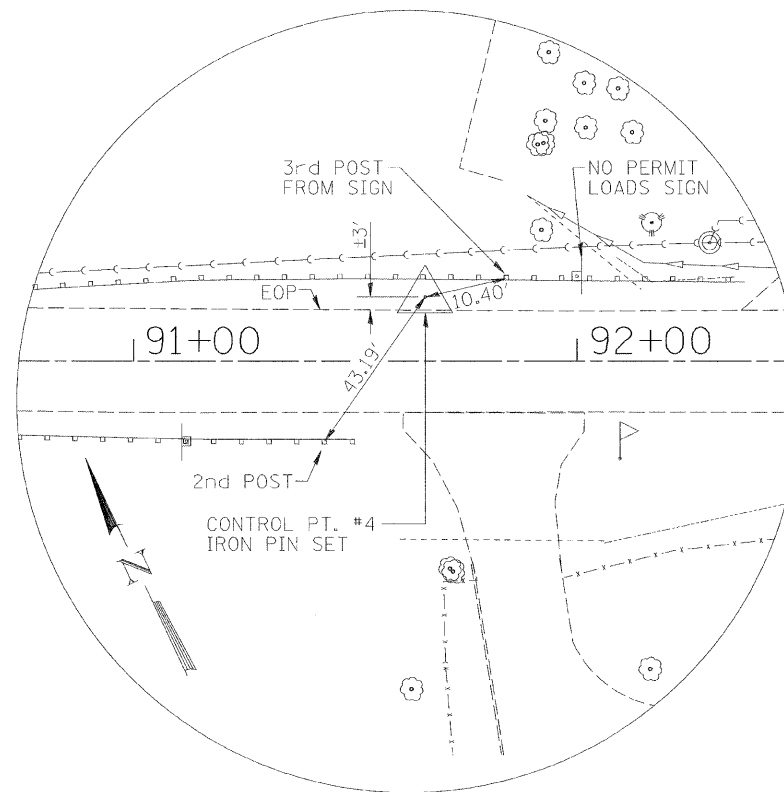
100+00

105+00

PT Sta 106+10.71
 NORTHING: 99508.508
 EASTING: 101658.440



TIE POINTS - CONTROL PT. #2
 NORTHING: 100000.000
 EASTING: 100000.000



TIE POINTS - CONTROL PT. #4
 NORTHING: 100032.706
 EASTING: 100406.250

URS
 345 EAST ASH AVENUE, SUITE B
 DECATUR, ILLINOIS 62526
 PH. 217-875-4800

FILE NAME =	USER NAME = Brian K. Nicholson	DESIGNED - MJP	REVISED -	STATE OF ILLINOIS DEPARTMENT OF TRANSPORTATION	CENTERLINE GEOMETRICS AND CONTROL TIES	F.A.U. RTE. 7398	SECTION 09-00905-00-BR	COUNTY MACON	TOTAL SHEETS 63	SHEET NO. 12	
	PLOT SCALE =	DRAWN - BKN	REVISED -			SHEET NO. 1 OF 1 SHEETS		CONTRACT NO. 95687		ILLINOIS FED. AID PROJECT	
	PLOT DATE =	CHECKED - KWB	REVISED -								