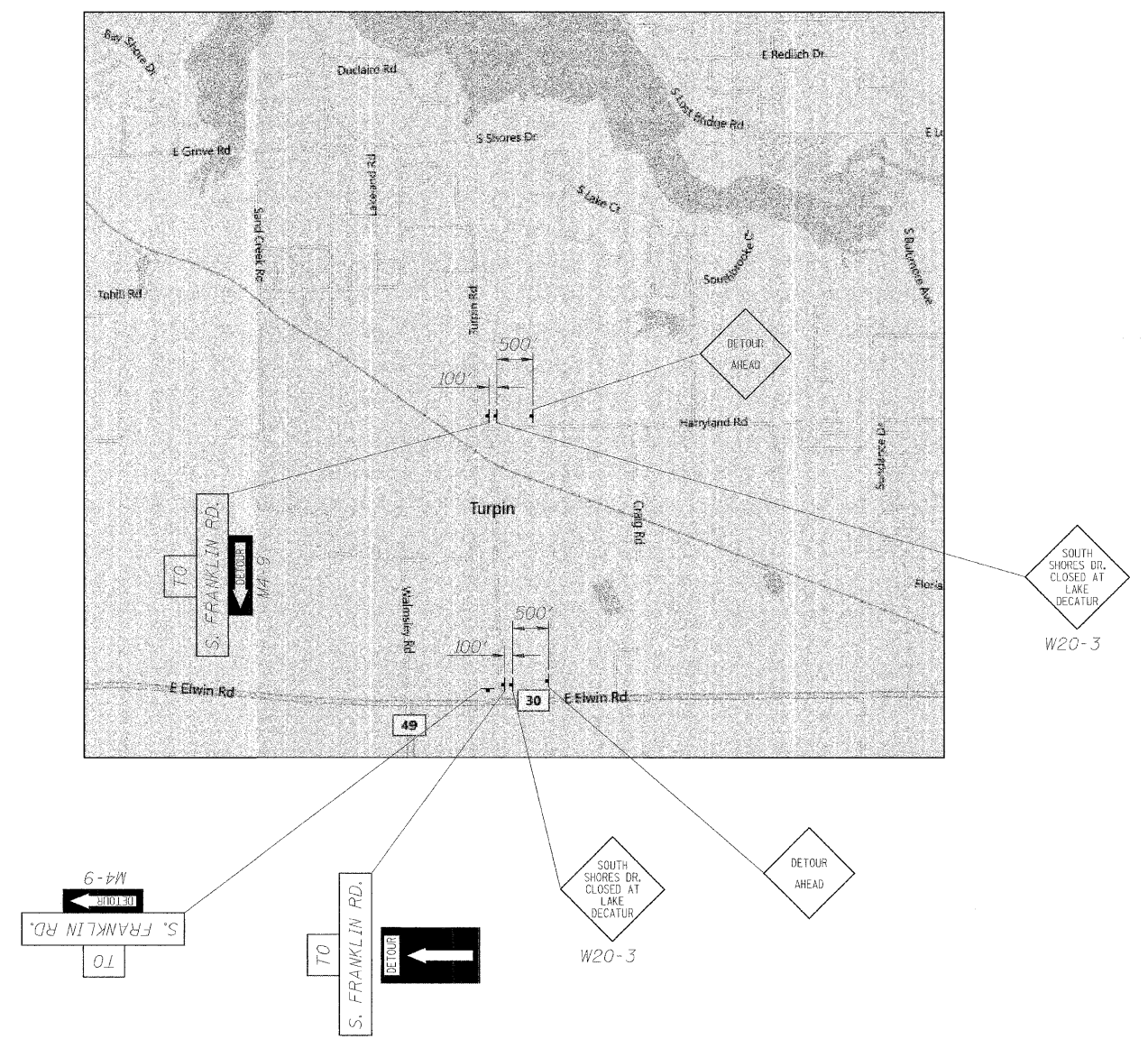
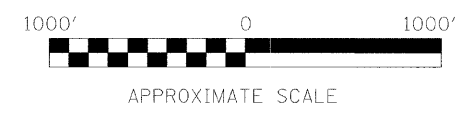
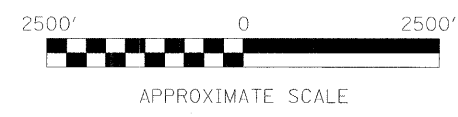


LOCATION 1



LOCATION 2



NOTE:
TWO WEEKS PRIOR TO ROAD CLOSURE, PLACE CHANGEABLE MESSAGE SIGN AT EACH END OF BRIDGE ALERTING MOTORISTS OF PENDING CLOSURE. SEE SPECIAL PROVISION FOR TRAFFIC CONTROL PLAN.

URS
345 EAST ASH AVENUE, SUITE B
DECATUR, ILLINOIS 62526
PH. 217-875-4800

FILE NAME =	USER NAME = Brian K. Nicholson	DESIGNED - MJP	REVISED -
		CHECKED - KWB	REVISED -
		DRAWN - BKN	REVISED -
		CHECKED - KWB	REVISED -

**STATE OF ILLINOIS
DEPARTMENT OF TRANSPORTATION**

TRAFFIC CONTROL AND DETOUR PLAN - LOCATIONS 1 AND 2

SHEET NO. 2 OF 3 SHEETS

F.A.U. RTE.	SECTION	COUNTY	TOTAL SHEETS	SHEET NO.
7398	09-00905-00-BR	MACON	63	16
CONTRACT NO. 95687			ILLINOIS FED. AID PROJECT	