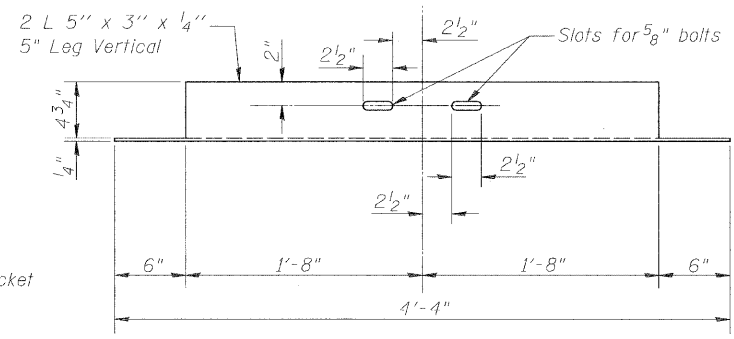
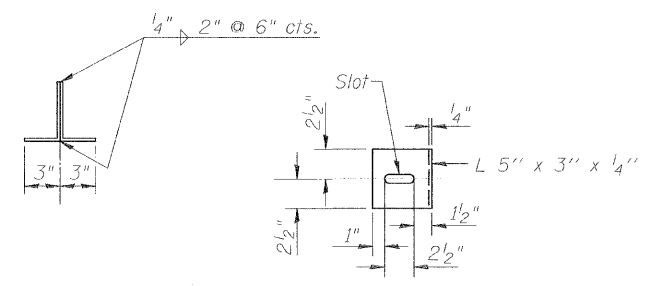


**SECTION A-A**

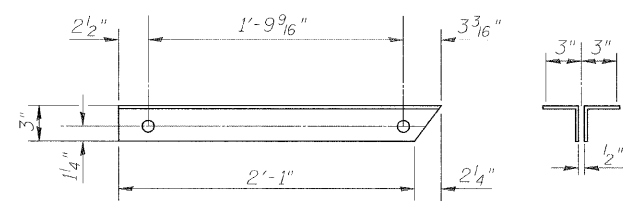
**Notes:**  
 Anchor bolts shall be ASTM F1554 all-thread (or an Engineer-approved alternate material) of the grade(s) and diameter(s) specified. ASTM A307 Grade C anchor bolts may be used in lieu of ASTM F1554 Grade 36 (Fy=36ksi). The corresponding specified grade of AASHTO M314 anchor bolts may be used in lieu of ASTM F1554.  
 Anchor bolts at fixed bearings may be either cast in place or installed in holes drilled after the supported member is in place.  
 Drilled and set anchor bolts shall be installed according to Article 521.06 of the Standard Specifications.  
 Two 1/8 in. adjusting shims shall be provided for each bearing in addition to all other plates or shims and placed as shown on bearing details.  
 All bearing plates and pintles shall conform to the requirements of AASHTO M 270 Grade 50W.



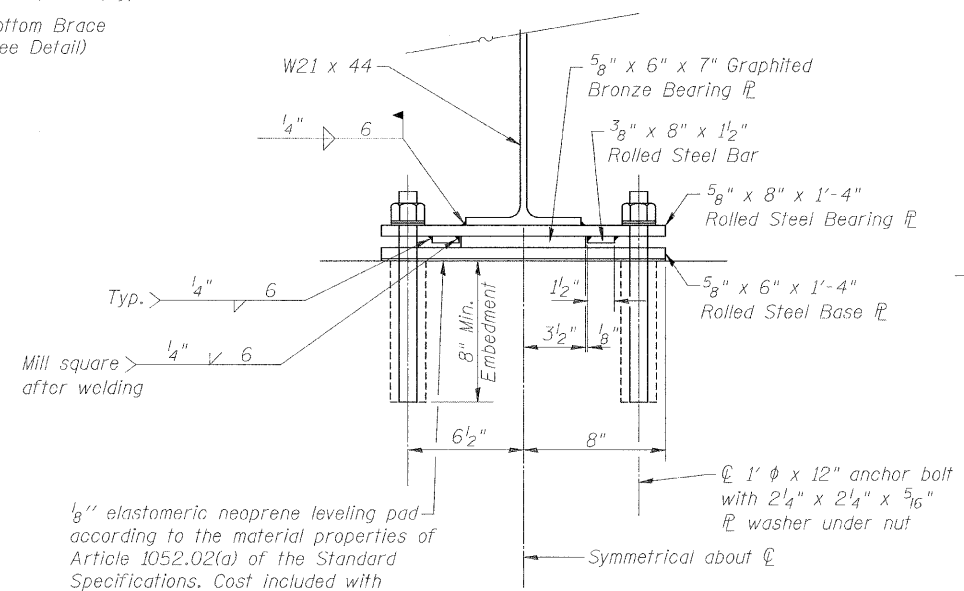
**BOTTOM BRACE**



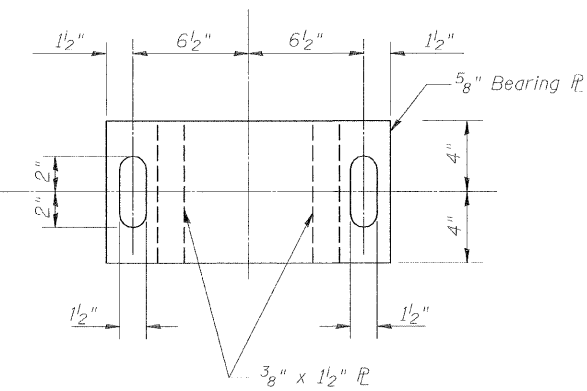
**MOUNTING BRACKET**



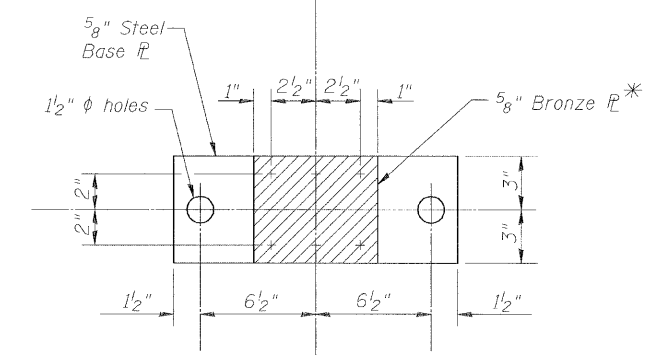
**SIDE BRACE**



**EXPANSION END - BEARING ASSEMBLY**

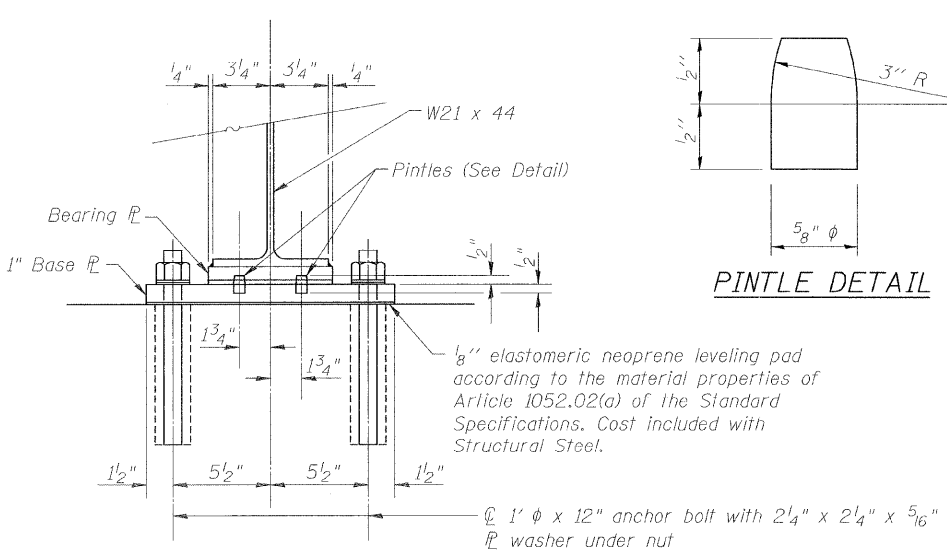


**EXPANSION END - BEARING PLATE**

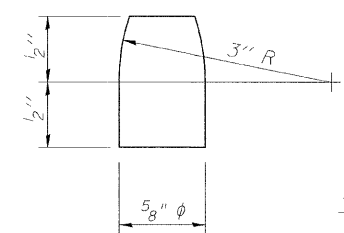


**EXPANSION END - BASE PLATE**

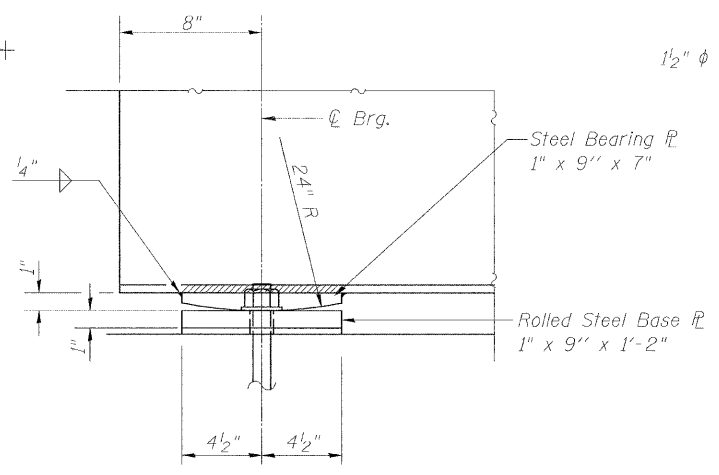
\* Drill 5/8" Bronze Plate and Top 5/8" Base Plate with 3/8" Turned Bolts with countersunk heads. Cost included in Furnishing and Erecting Structural Steel.



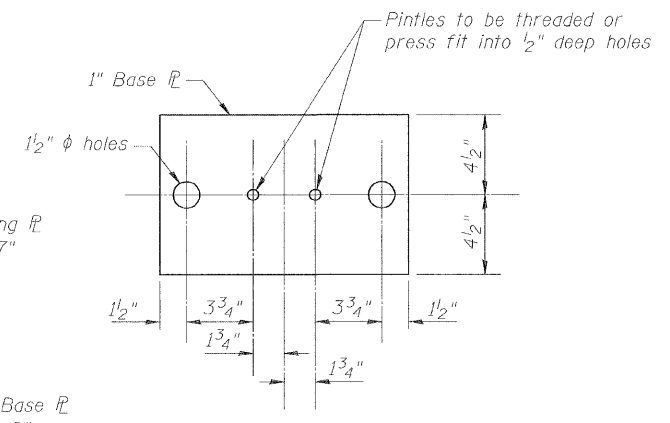
**FIXED END - BEARING ASSEMBLY**



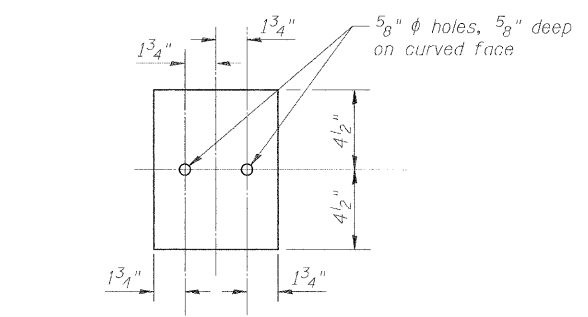
**PINTLE DETAIL**



**SIDE VIEW**



**FIXED END - BASE PLATE**



**FIXED END - BEARING PLATE**

**URS**

345 EAST ASH AVENUE, SUITE B  
 DECATUR, ILLINOIS 62526  
 PH. 217-875-4800

|              |                                |                |                           |   |                                      |                |         |        |              |           |
|--------------|--------------------------------|----------------|---------------------------|---|--------------------------------------|----------------|---------|--------|--------------|-----------|
| FILE NAME =  | USER NAME = Brian K. Nicholson | DESIGNED - MJP | REVISIONS -               | <b>STATE OF ILLINOIS<br/>DEPARTMENT OF TRANSPORTATION</b> | <b>SANITARY SEWER BRIDGE DETAILS</b> | F.A.U. RTE. =  | SECTION | COUNTY | TOTAL SHEETS | SHEET NO. |
| PLOT SCALE = | CHECKED - KWB                  | REVISIONS -    | 7398                      |   |                                      | 09-00905-00-BR | MACON   | 63     | 23           |           |
| PLOT DATE =  | DRAWN - BKN                    | REVISIONS -    | CONTRACT NO. 95687        |   |                                      |                |         |        |              |           |
|              | CHECKED - KWB                  | REVISIONS -    | ILLINOIS FED. AID PROJECT |   |                                      |                |         |        |              |           |