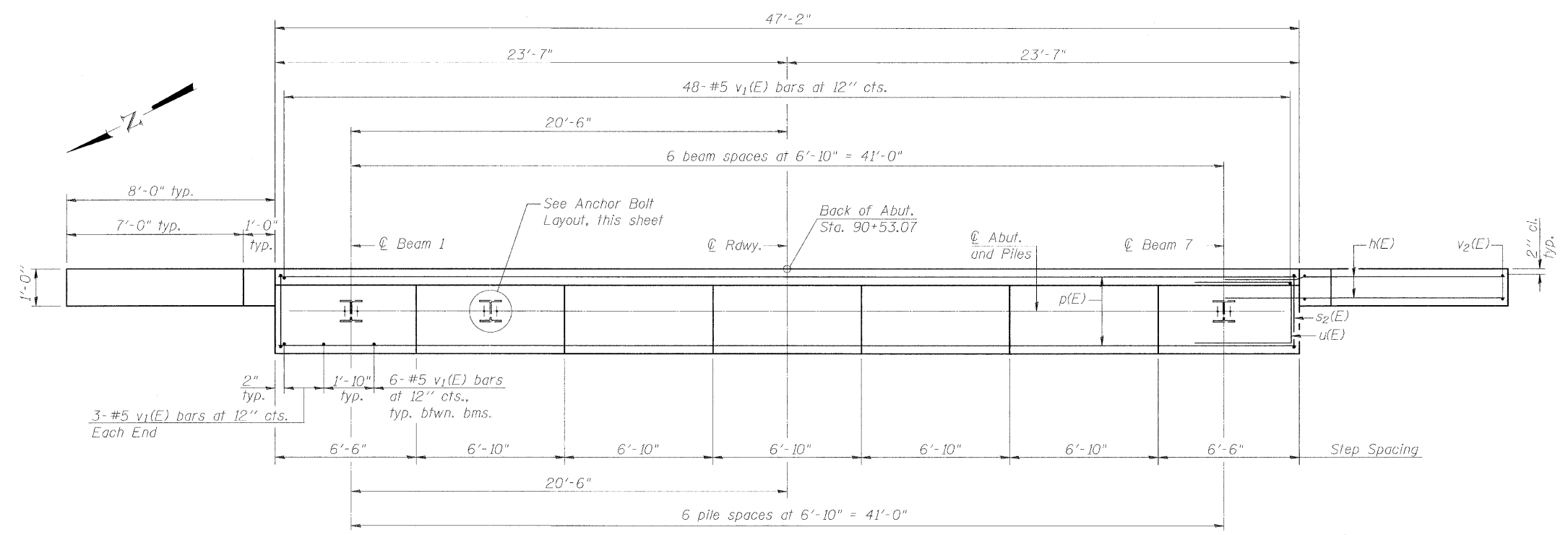
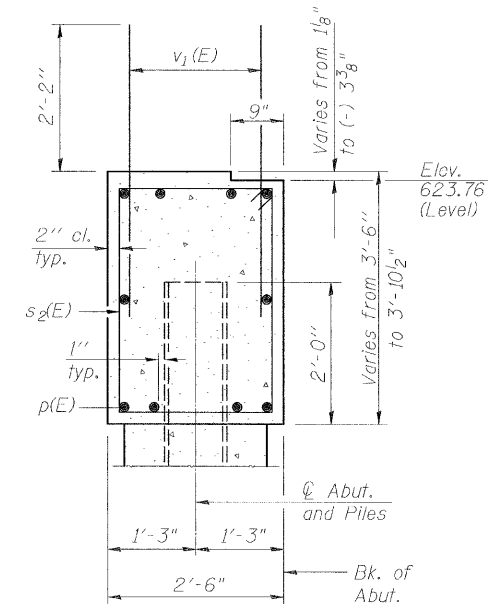
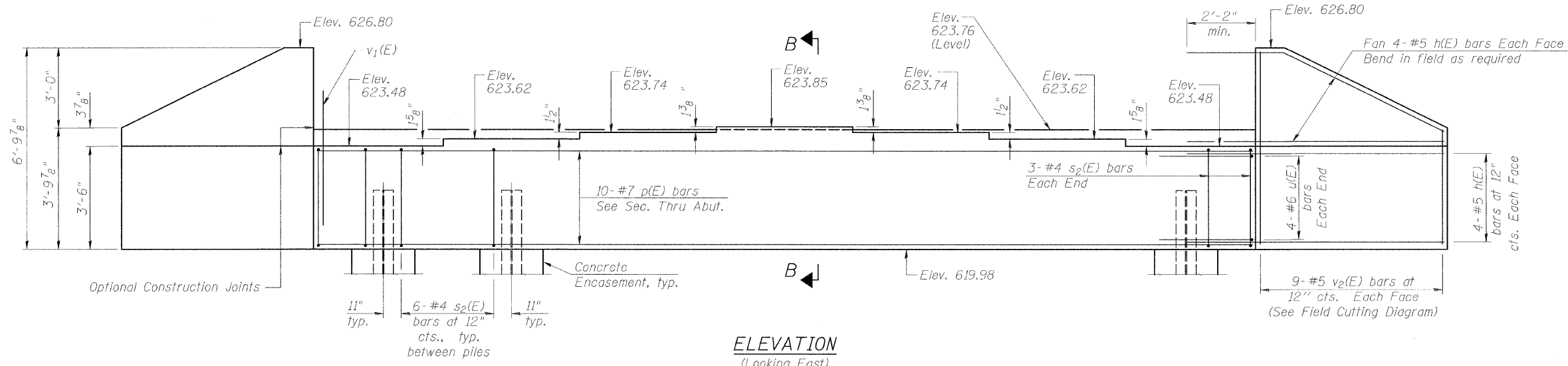
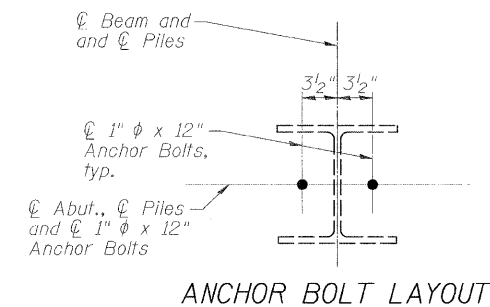
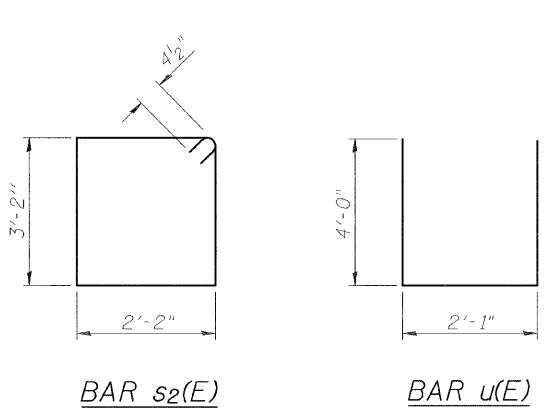
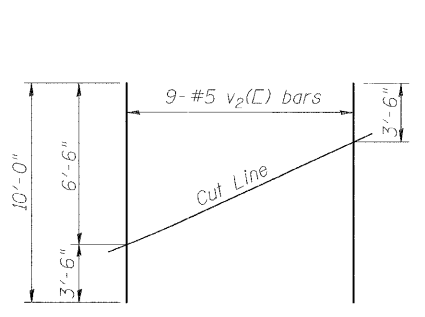


Notes:
Pour steps monolithically with cap.



PILE DATA
Type: Steel HP12x53
Nominal Required Bearing: 285 kips
Factored Resistance Available: 157 kips
Est. Length: 43'-0"
No. Production Piles: 7



BILL OF MATERIAL

Bar	No.	Size	Length	Shape	
h(E)	32	#5	10'-8"	—	
p(E)	10	#7	46'-10"	—	
s2(E)	42	#4	11'-5"	U	
u(E)	8	#6	10'-1"	—	
v1(E)	90	#5	4'-4"	—	
v2(E)	18	#5	10'-0"	—	
Structure Excavation				Cu. Yd.	26.9
Concrete Structures				Cu. Yd.	19.4
Reinforcement Bars, Epoxy Coated				Pound	2350
Furnishing Steel Piles HP12x53				Foot	301
Driving Piles				Foot	301
Concrete Encasement				Cu. Yd.	2.35

For details of Bar Splicers, see sheet 17 of 22.
For details of piles and Concrete Encasement, see sheet 16 of 22.

AI-0

7-1-10

FILE NAME =	USER NAME = Brian K. Nicholson	DESIGNED - MJP	REVISED -
		CHECKED - KWB	REVISED -
PLOT SCALE =		DRAWN - BKN	REVISED -
PLOT DATE =		CHECKED - KWB	REVISED -

**STATE OF ILLINOIS
DEPARTMENT OF TRANSPORTATION**

**EAST ABUTMENT
STRUCTURE NO. 058-6026**

SHEET NO. 14 OF 22 SHEETS

F.A.U. RTE.	SECTION	COUNTY	TOTAL SHEETS	SHEET NO.
7398	09-00905-00 BR	MACON	63	44
				CONTRACT NO. 95687
ILLINOIS FED. AID PROJECT				

URS
345 EAST ASH AVENUE, SUITE B
DECATUR, ILLINOIS 62526
PH. 217-875-4800