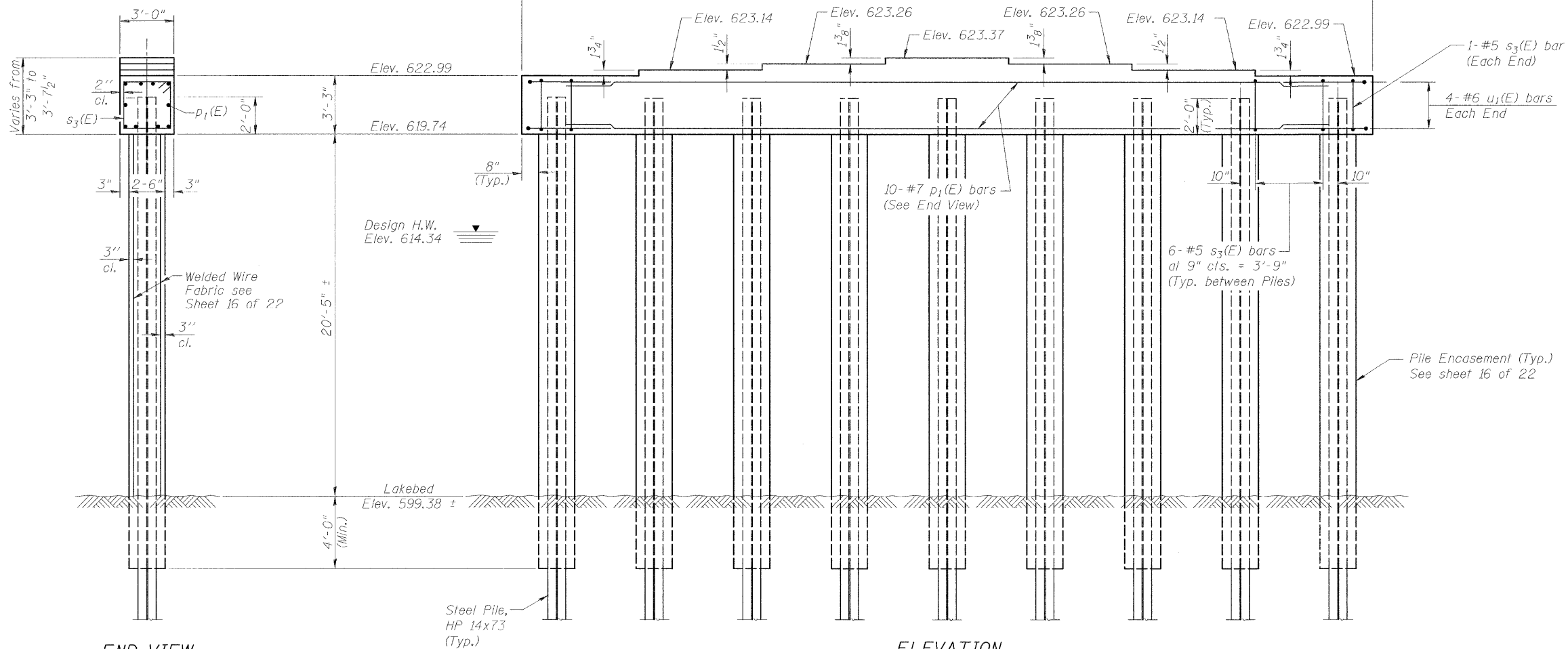
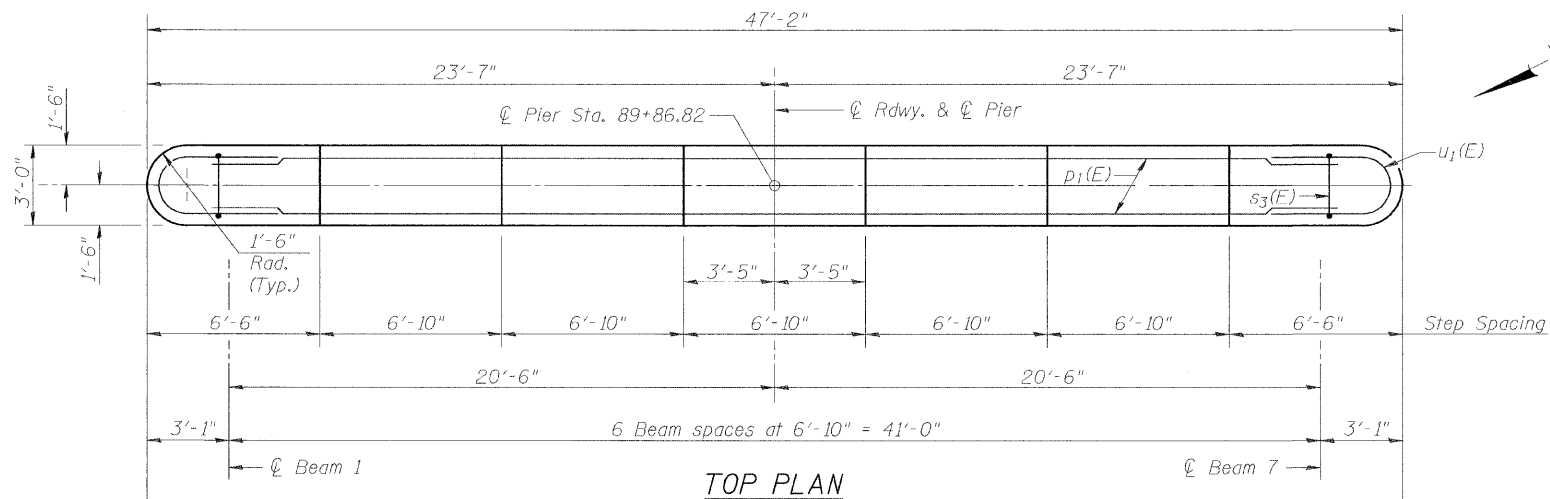


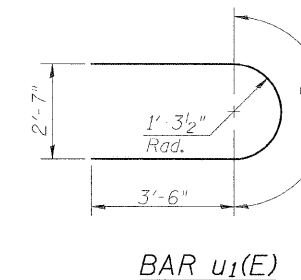
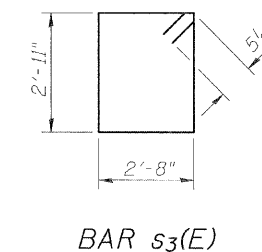
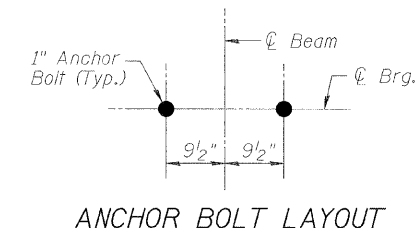
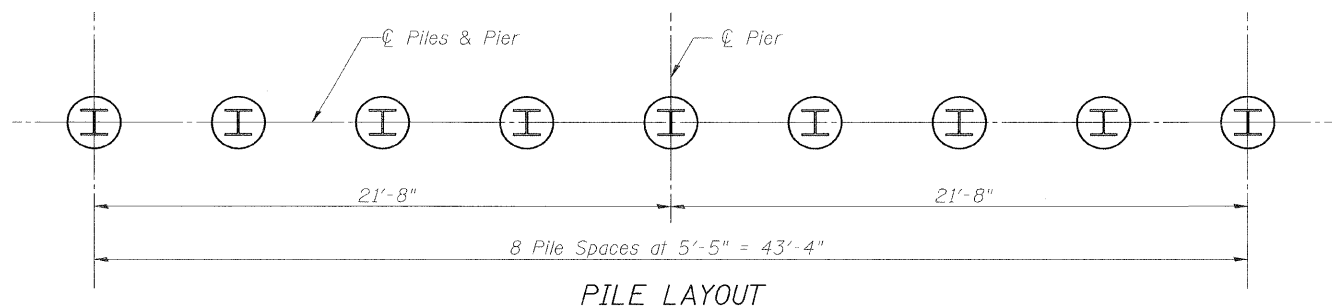
Notes:  
 Space reinforcement in cap to miss anchor bolts.  
 Pour steps monolithically with cap.  
 For details of piles, see sheet 16 of 22.  
 The Contractor shall limit the pile hammer size selected considering the relatively high soil strengths indicated in the borings and avoid overdriving the piles beyond their nominal required bearing to prevent pile damage during driving.  
 If a portion of the concrete encasements are underwater, concrete shall be tremied under water into forms according to article 503.08 of the standard specifications to an elevation of 1'-0" above the water line at the time of construction.  
 Cofferdams are not required for this work.



**END VIEW**

**PILE DATA**

Type: HP 14x73  
 Nominal Required Bearing: 398 Kips  
 Factored Resistance Available: 219 Kips  
 Est. Length: 48'-0"  
 No. Production Piles: 8  
 No. Test Piles: 1  
 Pre-drill to elevation 580.0. Cost included in Driving Piles (See Special Provisions).  
 Install Piles to capacity shown or to a minimum tip elevation of 578.0, whichever is lower.



**BILL OF MATERIAL**

Bar	No.	Size	Length	Shape
$p_1(E)$	10	#7	44'-2"	—
$s_3(E)$	50	#5	12'-1"	□
$u_1(E)$	8	#6	11'-1"	U
Concrete Structures		Cu. Yd.	17.9	
Reinforcement Bars, Epoxy Coated		Pound	1670	
Furnishing Steel Piles HP 14x73		Foot	384	
Driving Piles		Foot	384	
Test Pile Steel HP 14x73		Each	1	
Concrete Encasement		Cu. Yd.	38.7	

**URS**

345 EAST ASH AVENUE, SUITE B  
 DECATUR, ILLINOIS 62526  
 PH. 217-875-4800

PC-1

7-1-10

FILE NAME =	USER NAME =	DESIGNED -	REVISED -
	Brion K. Nicholson	MJP	---
		CHECKED -	REVISED -
		KWB	---
		DRAWN -	REVISED -
		BKN	---
		CHECKED -	REVISED -
		KWB	---

STATE OF ILLINOIS  
 DEPARTMENT OF TRANSPORTATION

PIER  
 STRUCTURE NO. 058-6026

SHEET NO. 15 OF 22 SHEETS

F.A.U. RTE.	SECTION	COUNTY	TOTAL SHEETS	SHEET NO.
7398	09-00905-00-BR	MACON	63	45
				CONTRACT NO. 95687
ILLINOIS FED. AID PROJECT				