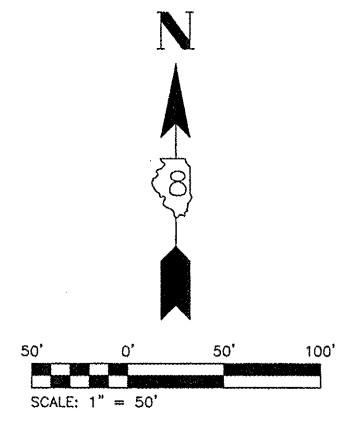
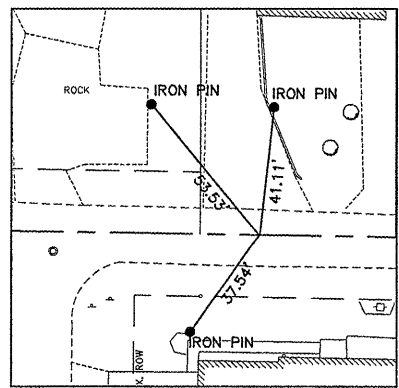
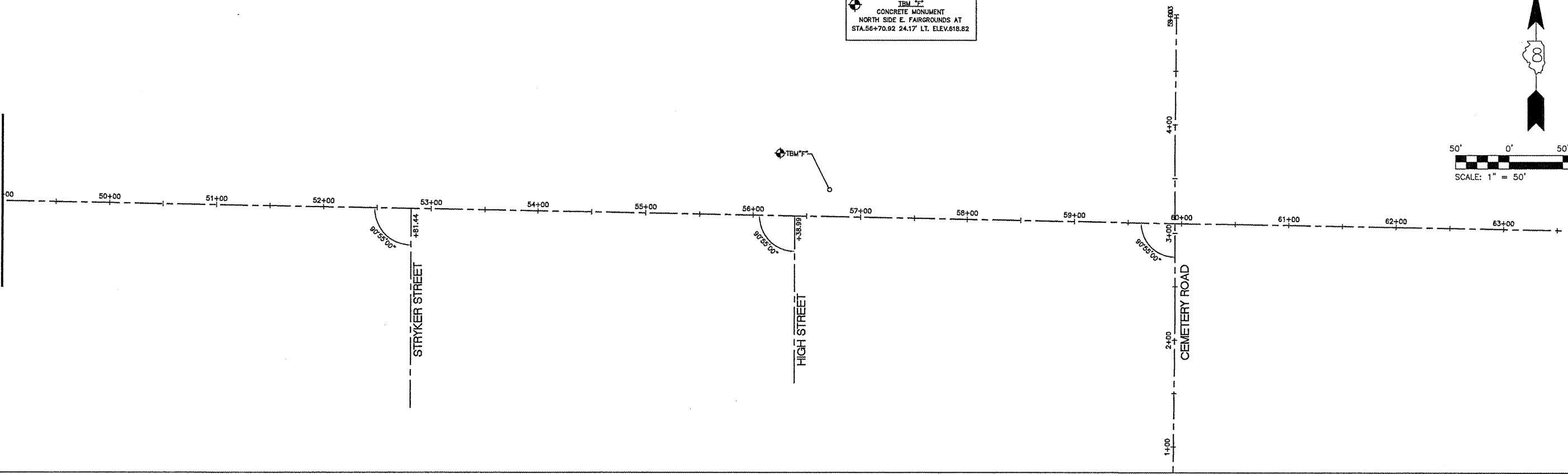


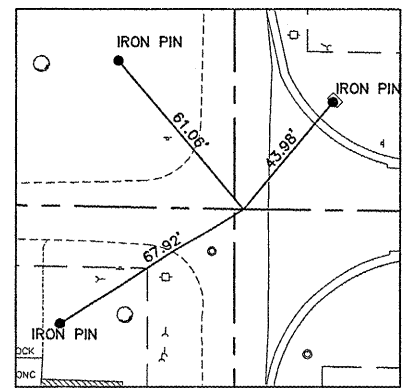
TBM "F"  
 CONCRETE MONUMENT  
 NORTH SIDE E. FAIRGROUNDS AT  
 STA. 56+70.92 24.17' LT. ELEV. 618.82



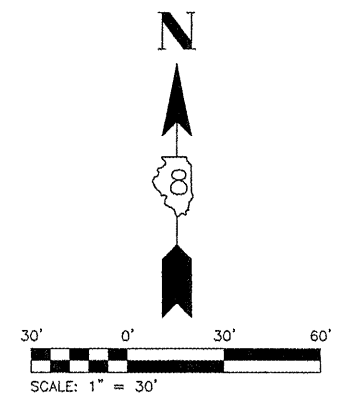
49+00  
MATCH LINE



POL STA. 53+50  
 N: 4910.7081  
 E: 8935.8246



PI STA. 59+96.53  
 N: 4898.6733  
 E: 9582.2467



FILE NAME = 00140-321	USER NAME = Hargan, Chris	DESIGNED -- CSH	REVISED --
		DRAWN -- CSH	REVISED --
		CHECKED -- DLK	REVISED --
		DATE -- 3/28/12	REVISED --

STATE OF ILLINOIS  
DEPARTMENT OF TRANSPORTATION

REFERENCE TIES & BENCHMARKS

SCALE: 1:30 SHEET NO. 19 OF 117 SHEETS STA. 49+00 TO STA. END

F.A.U. RTE.	SECTION	COUNTY	TOTAL SHEETS	SHEET NO.
8801	05-00034-01-RP	JERSEY	117	19
CONTRACT NO. 97371				
FED. ROAD DIST. NO. 8 ILLINOIS				