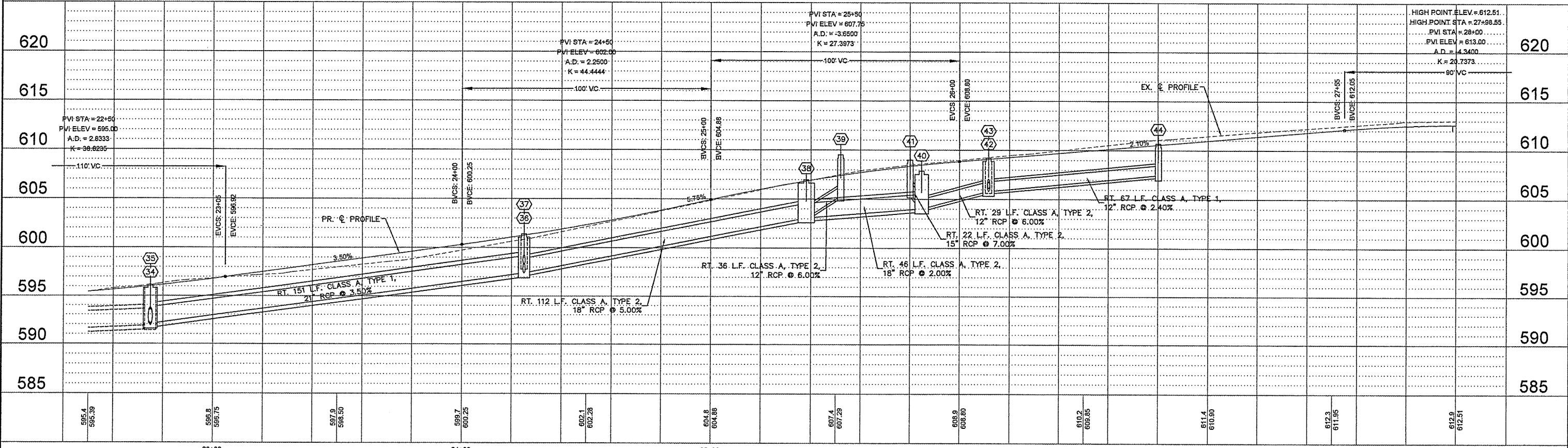


I BM "C"  
 IRON PIN S.E. CORNER  
 E. FAIRGROUNDS AVE. AND  
 OAKWOOD ST. AT  
 STA. 25+98.50 84.76' RT. ELEV. 610.65



FILE NAME = 00140-321	USER NAME = Hargan, Chris	DESIGNED - CSH	REVISED -	STATE OF ILLINOIS DEPARTMENT OF TRANSPORTATION	ROADWAY PLAN AND PROFILE				F.A.U. RTE. 8801	SECTION 05-00034-01-RP	COUNTY JERSEY	TOTAL SHEETS 117	SHEET NO. 24
	PLOT SCALE = 1:2	DRAWN - CSH	REVISED -		SCALE: 1:20	SHEET NO. 24 OF 117 SHEETS STA. 22+50 TO STA. 28+00				CONTRACT NO. 97371			
	PLOT DATE = 4/4/2012	CHECKED - DLK	REVISED -		FED. ROAD DIST. NO. 8 ILLINOIS FED. AID PROJECT								
		DATE - 3/28/12	REVISED -										