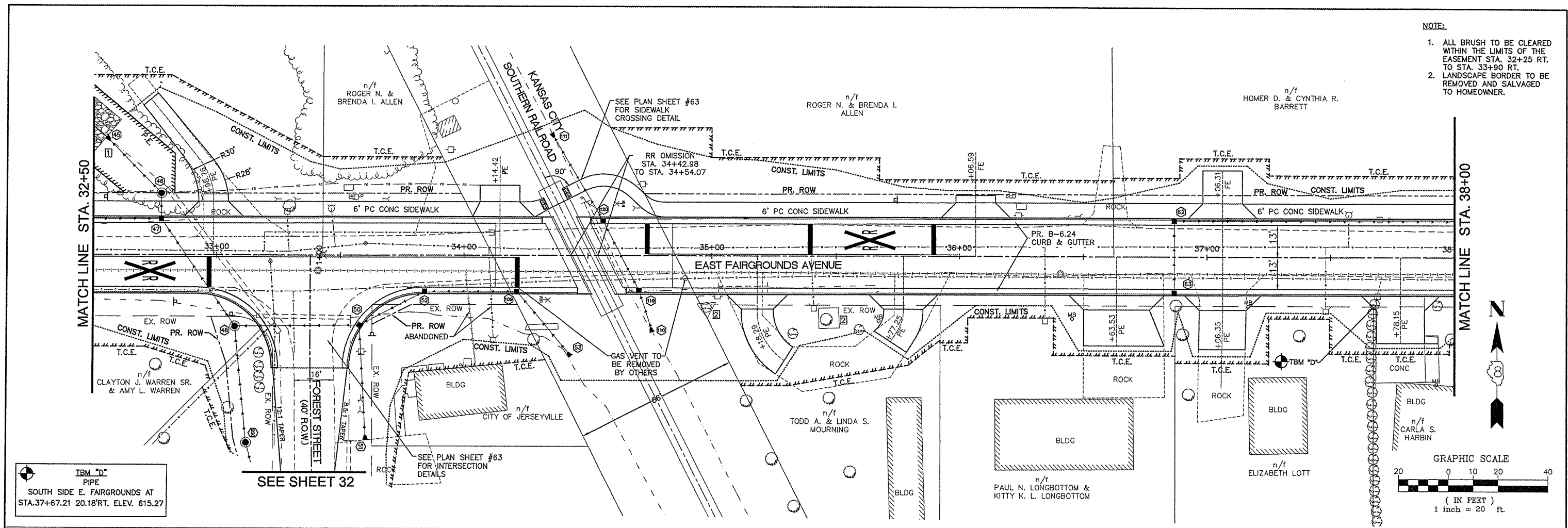


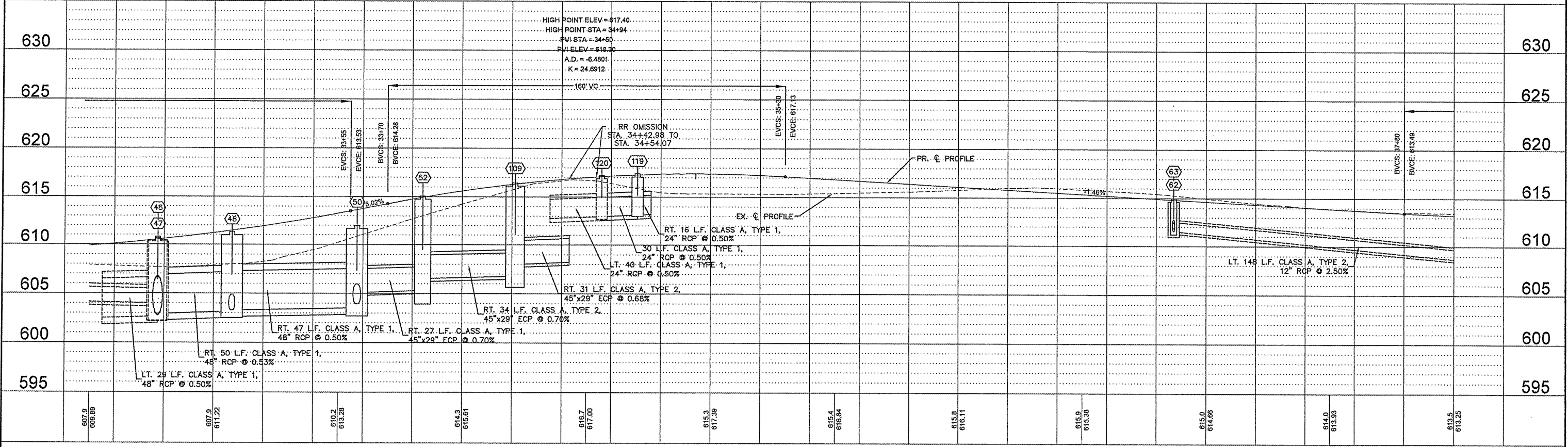
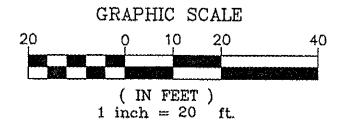
NOTE:

1. ALL BRUSH TO BE CLEARED WITHIN THE LIMITS OF THE EASEMENT STA. 32+25 RT. TO STA. 33+90 RT.
2. LANDSCAPE BORDER TO BE REMOVED AND SALVAGED TO HOMEOWNER.



IBM "D" PIPE
SOUTH SIDE E. FAIRGROUNDS AT
STA. 37+67.21 20.18' RT. ELEV. 615.27

SEE SHEET 32



FILE NAME = 00140-321	USER NAME = Hagan, Chris	DESIGNED - CSH	REVISED -	STATE OF ILLINOIS DEPARTMENT OF TRANSPORTATION	ROADWAY PLAN AND PROFILE	F.A.U. RTE. 8801	SECTION 05-00034-01-RP	COUNTY JERSEY	TOTAL SHEETS 117	SHEET NO. 26	
	PLOT SCALE = 1:2	DRAWN - CSH	REVISED -			SCALE: 1:20 SHEET NO. 26 OF 117 SHEETS STA. 32+50 TO STA. 38+00					
	PLOT DATE = 4/2/2012	CHECKED - DLK	REVISED -			CONTRACT NO. 97371					
		DATE - 3/28/12	REVISED -			FED. ROAD DIST. NO. 8 ILLINOIS FED. AID PROJECT					