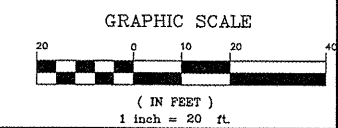
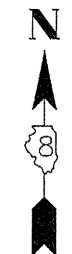
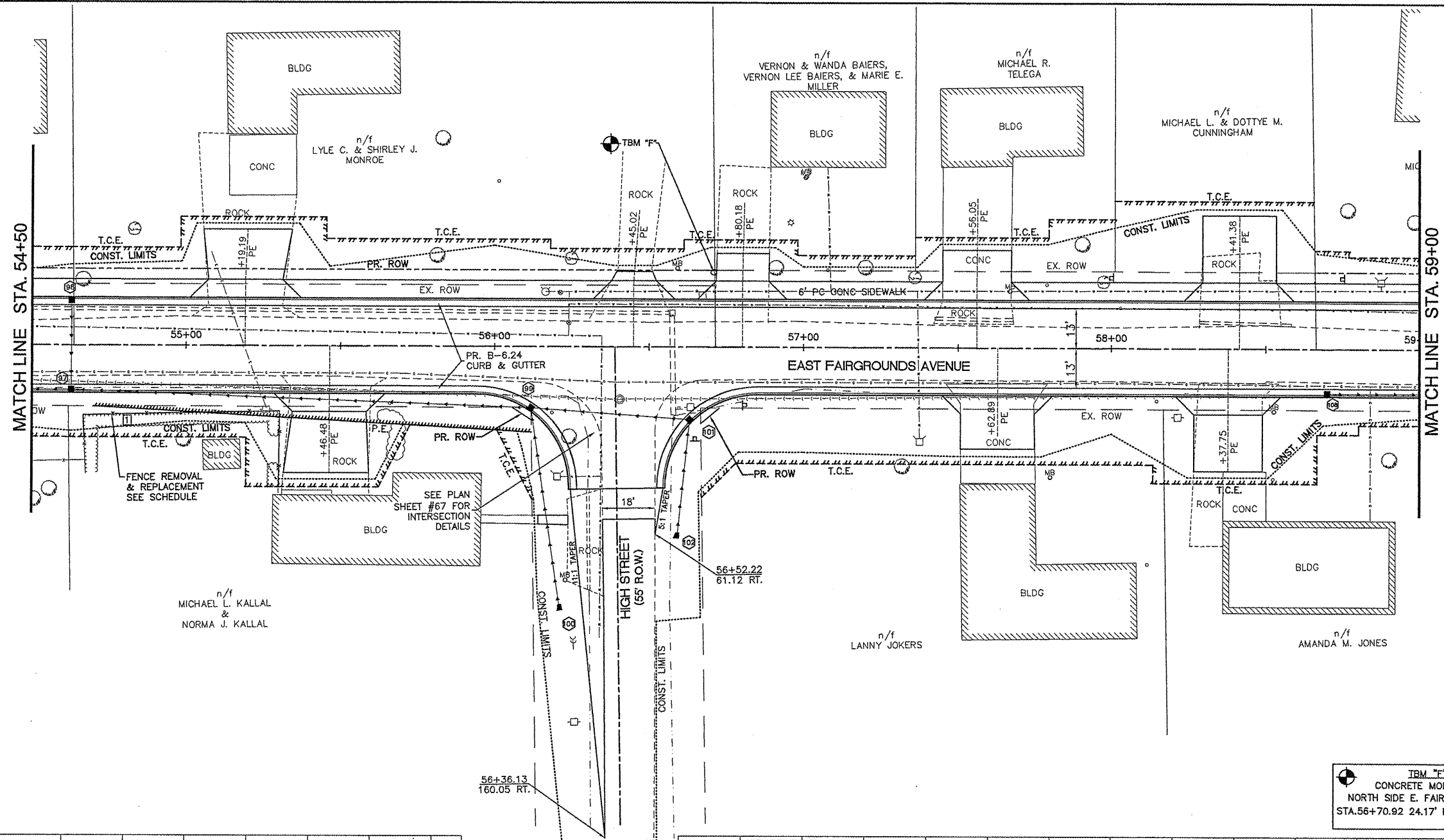
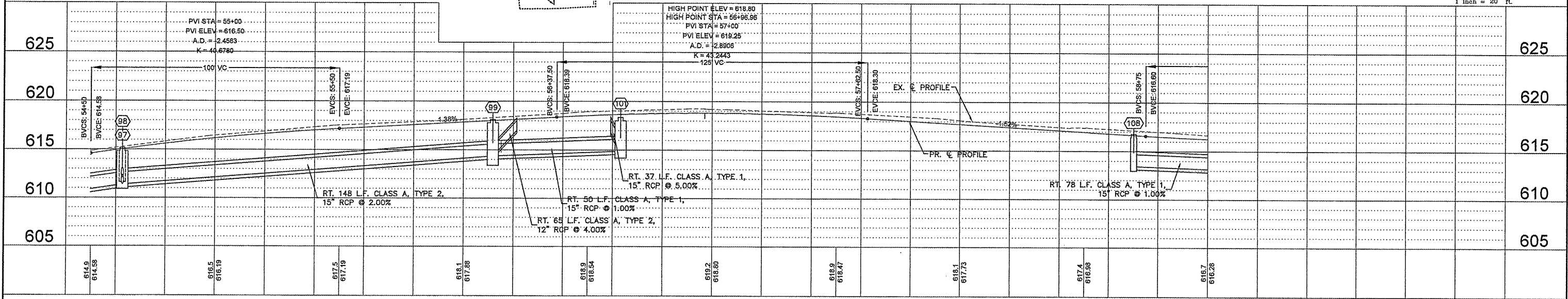


NOTE:

- CONTRACTOR TO COORDINATE THE CAREFUL REMOVAL AND STORAGE OF THE BUSHES WITH THE PROPERTY OWNER.



IBM "F"
 CONCRETE MONUMENT
 NORTH SIDE E. FAIRGROUNDS AT
 STA. 56+70.92 24.17' LT. ELEV. 618.82



FILE NAME = 00140-321	USER NAME = Hargan, Chris	DESIGNED - CSH	REVISED -	STATE OF ILLINOIS DEPARTMENT OF TRANSPORTATION	ROADWAY PLAN AND PROFILE	F.A.U. RTE. 8801	SECTION 05-00034-01-RP	COUNTY JERSEY	TOTAL SHEETS 117	SHEET NO. 30
	PLOT SCALE = 1:2	CHECKED - DLK	REVISED -			SCALE: 1:20		SHEET NO. 30 OF 117 SHEETS		CONTRACT NO. 97371
	PLOT DATE = 3/10/2012	DATE = 3/9/12	REVISED -			STA. 54+50 TO STA. 59+00				
FED. ROAD DIST. NO. 8 ILLINOIS FED. AID PROJECT										