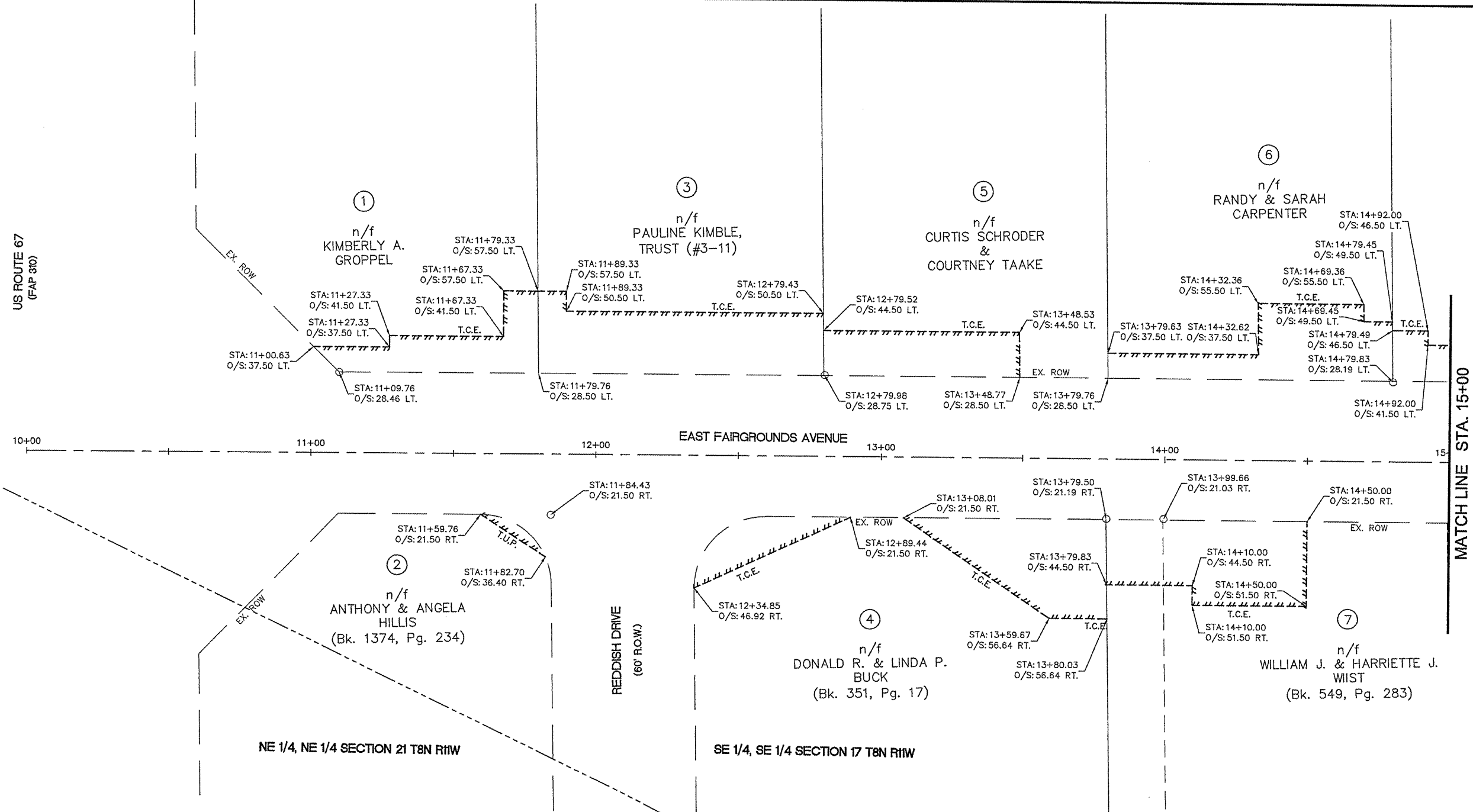


US ROUTE 67
(FAP 310)



- LEGEND**
- CONC. MONUMENT
 - IRON PIN/PIPE
 - ✕ CHISELED "X"
 - ⊕ RAILROAD SPIKE
 - ⊙ SPIKE NAIL
 - ⋯ PR. TCE
 - ⋯ PR. TUP
 - ⋯ PR. PE
 - ⋯ PR. ROW
 - ⋯ EX. ROW
 - ⋯ SECTION LINE
 - ⋯ PROPERTY LINE

PARCEL NO.	OWNER	TOTAL HOLDINGS ACRES	FEE SIMPLE ACQUISITION						EASEMENTS		EASEMENT PURPOSE	PERMANENT TAX NUMBER	PROPERTY ACQUIRED BY
			ACRES	SG. FT.	PREVIOUSLY DEDICATED	AND/OR USED	NET	ACRES	SG. FT.	PE = PERMANENT			
1	KIMBERLY A. GROPPPEL	0.4671	N/A	N/A	N/A	N/A	N/A	N/A	TE 0.0246	1,073	REMOVE AND REPLACE DRIVE WAY, GRADING AND SEEDING		
2	ANTHONY & ANGELA HILLS	0.3273	N/A	N/A	N/A	N/A	N/A	N/A	N/A	N/A			
3	PAULINE KIMBLE, TRUST (#3-11)	0.4130	N/A	N/A	N/A	N/A	N/A	N/A	TE 0.0521	2,270	REMOVE AND REPLACE DRIVE WAY, GRADING AND SEEDING		
4	DONALD R. & LINDA P. BUCK	0.3863	N/A	N/A	N/A	N/A	N/A	N/A	TE 0.0499	2,173	REMOVE AND REPLACE DRIVE WAY, GRADING AND SEEDING		
5	CURTIS SCHRODER & COURTNEY TAAKE	0.4129	N/A	N/A	N/A	N/A	N/A	N/A	TE 0.0253	1,104	REMOVE AND REPLACE DRIVE WAY, GRADING AND SEEDING		
6	RANDY & SARAH CARPENTER	0.4129	N/A	N/A	N/A	N/A	N/A	N/A	TE 0.0387	1,686	REMOVE AND REPLACE DRIVE WAY, GRADING AND SEEDING		
7	WILLIAM J. & HARRIETTE J. WIST	0.5191	N/A	N/A	N/A	N/A	N/A	N/A	TE 0.0500	2,178	REMOVE AND REPLACE DRIVE WAY, GRADING AND SEEDING		

