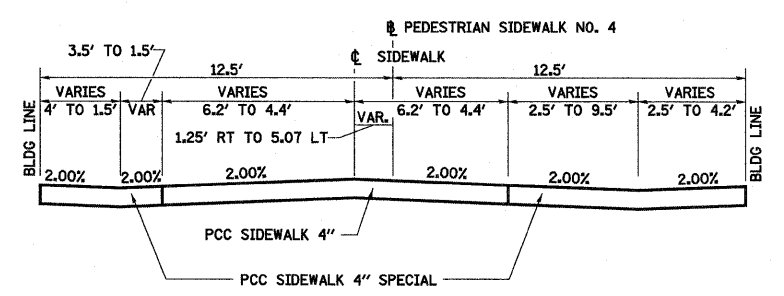
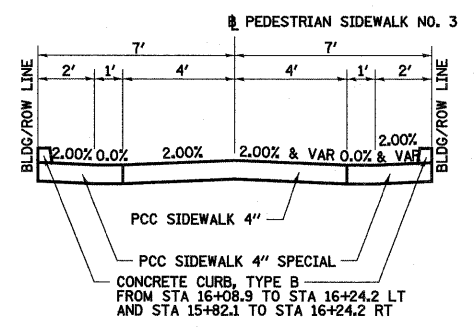


PEDESTRIAN SIDEWALK NO. 3

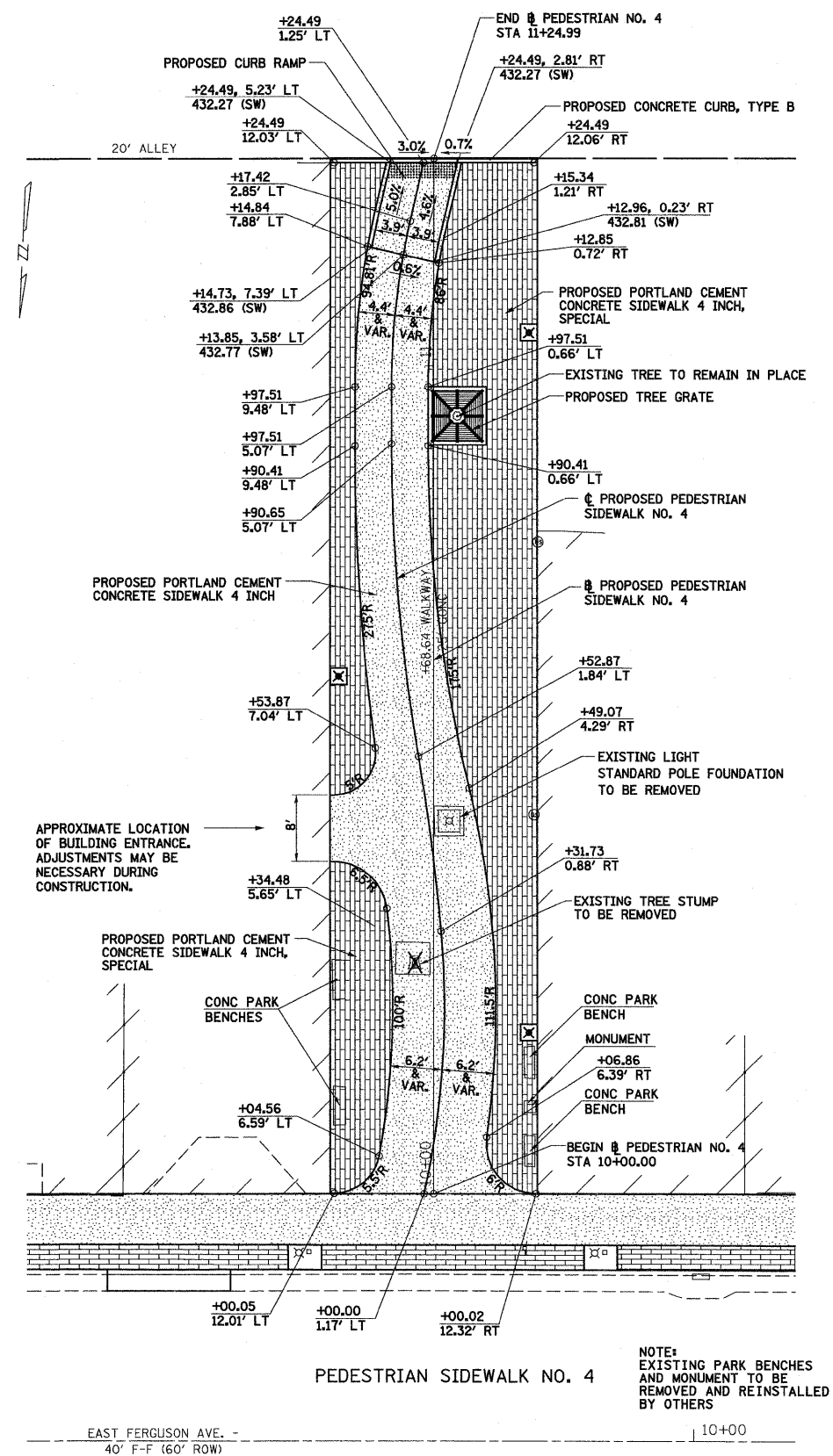


SECTION THRU PEDESTRIAN SIDEWALK NO. 4

SEE PEDESTRIAN SIDEWALK NO. 4 CROSS SECTIONS FOR ELEVATIONS AND OFFSETS FOR PROPOSED SWALES.
 SEE PEDESTRIAN SIDEWALK NO. 4 DETAIL FOR VARIABLE WIDTHS AND OFFSETS.

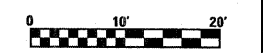


SECTION THRU PEDESTRIAN SIDEWALK NO. 3



PEDESTRIAN SIDEWALK NO. 4

NOTE: EXISTING PARK BENCHES AND MONUMENT TO BE REMOVED AND REINSTALLED BY OTHERS



FILE NAME =	USER NAME = Paul	DESIGNED - JWS	REVISED -
S:\Projects\40-000-01\Wood River Streetscape\dgn\hasei_dgn\misc det ahta.dgn		DRAWN - BAB	REVISED -
		CHECKED - BRM	REVISED -
		DATE - 6-1-2011	REVISED -

CITY OF WOOD RIVER

WOOD RIVER STREETScape
 PEDESTRIAN WALKWAY DETAILS

SCALE: 1"=10' SHEET NO. 1 OF 1 SHEETS STA. TO STA.

FAU ROUTE 8971 & FAU ROUTE 9006
 WOOD RIVER STREETScape PHASE 1

F.A.U. RTE.	SECTION	COUNTY	TOTAL SHEETS	SHEET NO.
•	10-00047-01-LS	MADISON	75	18
CONTRACT NO. 97477				
FED. ROAD DIST. NO. ILLINOIS FED. AID PROJECT				