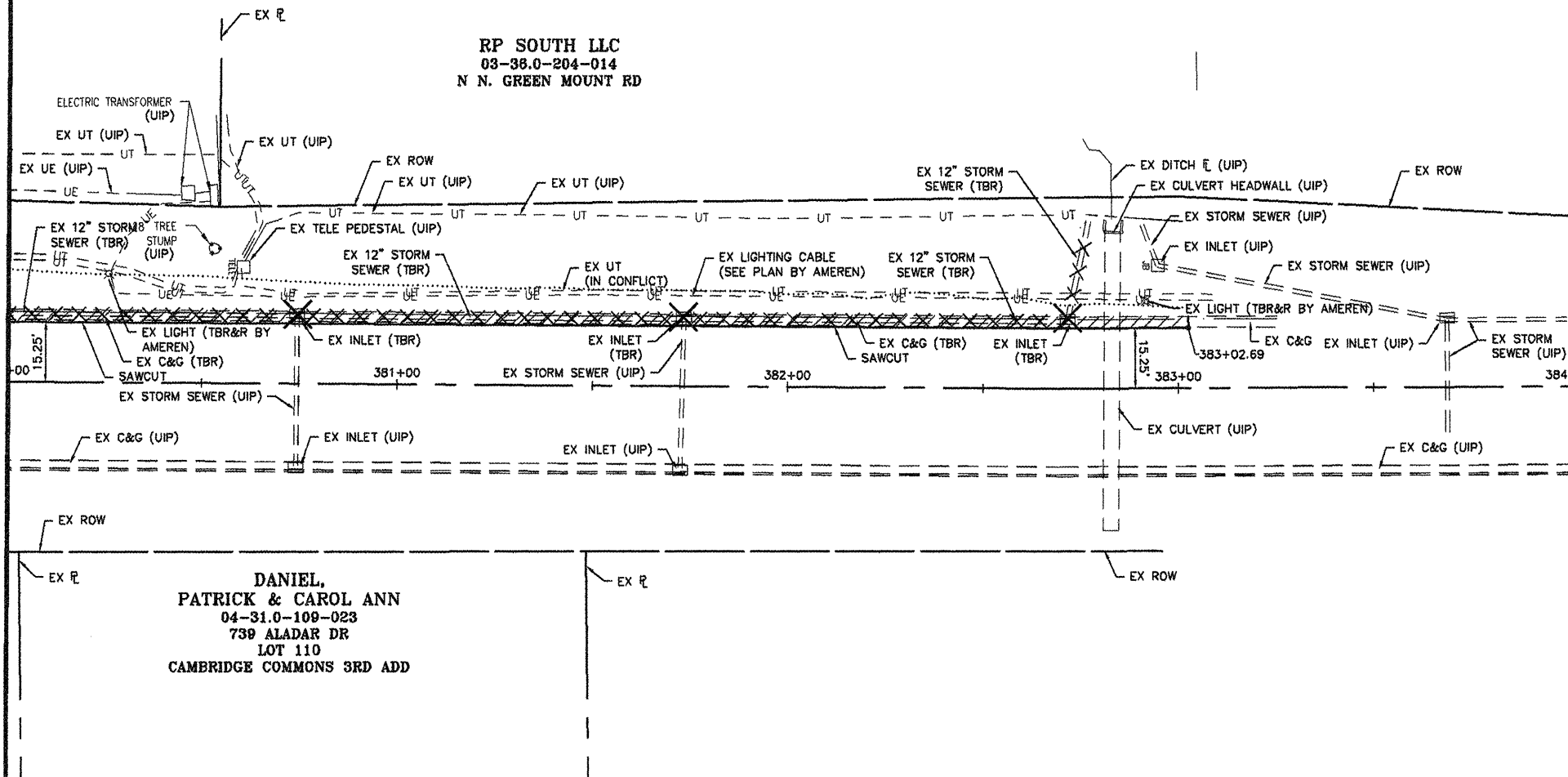


MATCHLINE 380+00

RP SOUTH LLC  
03-38.0-204-014  
N N. GREEN MOUNT RD

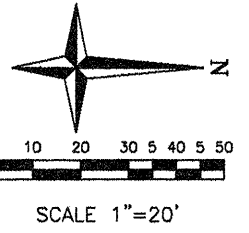


**REMOVAL LEGEND**  
 (TBR) - TO BE REMOVED  
 (TBR&R) - TO BE REMOVED & RELOCATED  
 (UIP) - USE IN PLACE  
 (ATG) - ADJUST TO GRADE  
 PR - PROPOSED  
 EX - EXISTING  
 - REMOVAL ITEM

**SHEET NO.**  
22 OF 55  
**Job No.** 068-09  
**Scale:** 1"=20'  
**Drawn by:** BEC  
**Design by:** BEC  
**Approved by:** CMB  
**File Name:** Shiloh Plans

**ISSUE RECORD**

DATE	DESCRIPTION
4/20/12	FS&E



DANIEL,  
PATRICK & CAROL ANN  
04-31.0-109-023  
739 ALADAR DR  
LOT 110  
CAMBRIDGE COMMONS 3RD ADD

Corporate Engineering Certificate # 000381

CIVIL ENGINEER  
4/20/12

**CBB** Crawford, Bunte, Brammeier  
Traffic and Transportation Engineers  
St. Louis, Missouri/Glen Carbon, Illinois  
314-878-6644 618-656-2612  
Fax: 314-878-5876 E-Mail: cbb@cbbtraffic.com

**REMOVAL SHEETS**  
N. GREEN MOUNT ROAD & I-64  
E.B. RAMP, W.B. RAMP &  
REGENCY PARK/PIERCE BLVD  
SHILOH, ILLINOIS

F.A.U. RTE.	SECTION	COUNTY
91TD	08-00333-12-PW	ST. CLAIR
ILLINOIS	CONTRACT NO. 97492	