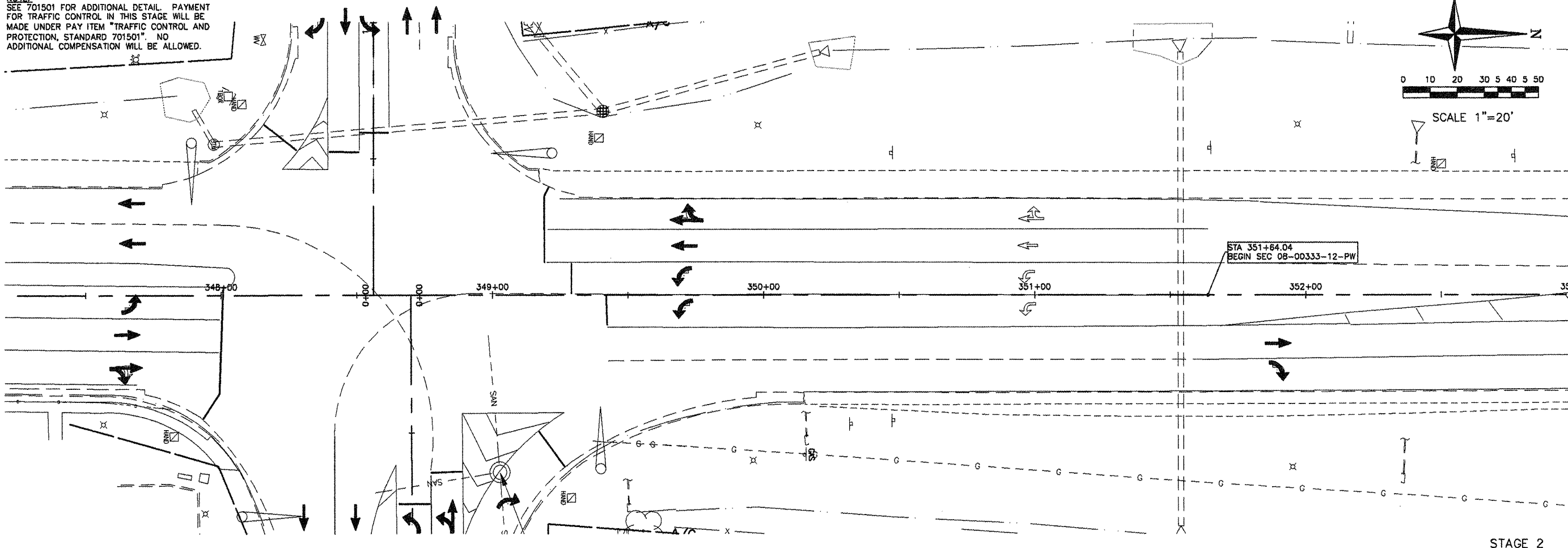
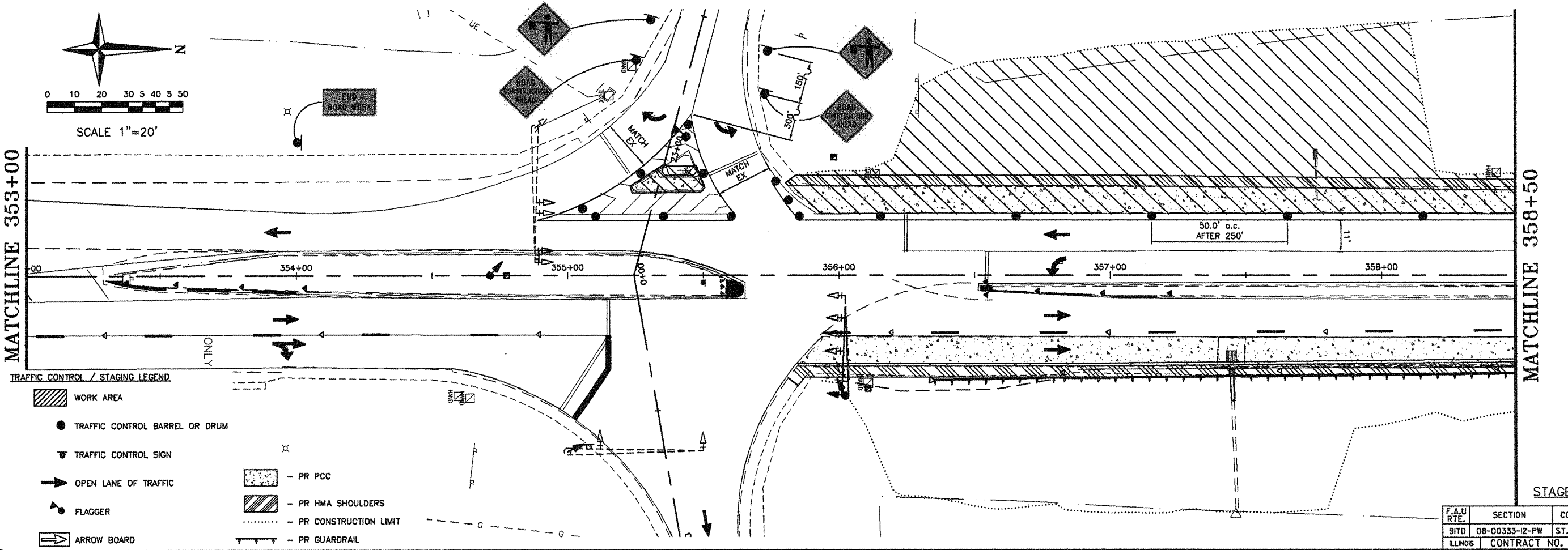


NOTE:
SEE 701501 FOR ADDITIONAL DETAIL. PAYMENT FOR TRAFFIC CONTROL IN THIS STAGE WILL BE MADE UNDER PAY ITEM "TRAFFIC CONTROL AND PROTECTION, STANDARD 701501". NO ADDITIONAL COMPENSATION WILL BE ALLOWED.



MATCHLINE 353+00

STAGE 2



MATCHLINE 353+00

MATCHLINE 358+00

STAGE 2

F.A.U. RTE.	SECTION	COUNTY
9170	08-00333-12-PW	ST. CLAIR
ILLINOIS	CONTRACT NO. 97492	

SHEET NO.
36 of 55

Job No. 088-09
Scale: 1"=20'
Drawn by: BEC
Design by: BEC
Approved by: CMB
File Name: Shiloh Plans

DATE	ISSUE RECORD
PS&E 4/20/12	

Corporate Engineering Certificate # 000381

CRAWFORD, BUNTE, BRAMMEIER
Traffic and Transportation Engineers

CIVIL ENGINEER
4/20/12

CBB Crawford, Bunte, Brammeier
Traffic and Transportation Engineers

St. Louis, Missouri/Glen Carbon, Illinois
314-878-6644 618-656-2612
Fax: 314-878-5876 E-Mail: cbb@cbbrtraffic.com

TRAFFIC CONTROL PLAN

N. GREEN MOUNT ROAD & I-64
E.B. RAMP, W.B. RAMP &
REGENCY PARK/PIERCE BLVD
SHILOH, ILLINOIS