

Job No. 066-09  
Scale:  
Drawn by: AJT  
Design by: EF  
Approved by: RAS  
File Name: Shiloh Plans

ISSUE RECORD	PS&E SUBMITTAL
4/20/12	

Corporate Engineering Certificate # 000381  
Richard A. Schmitt  
CIVIL ENGINEER  
4/20/12

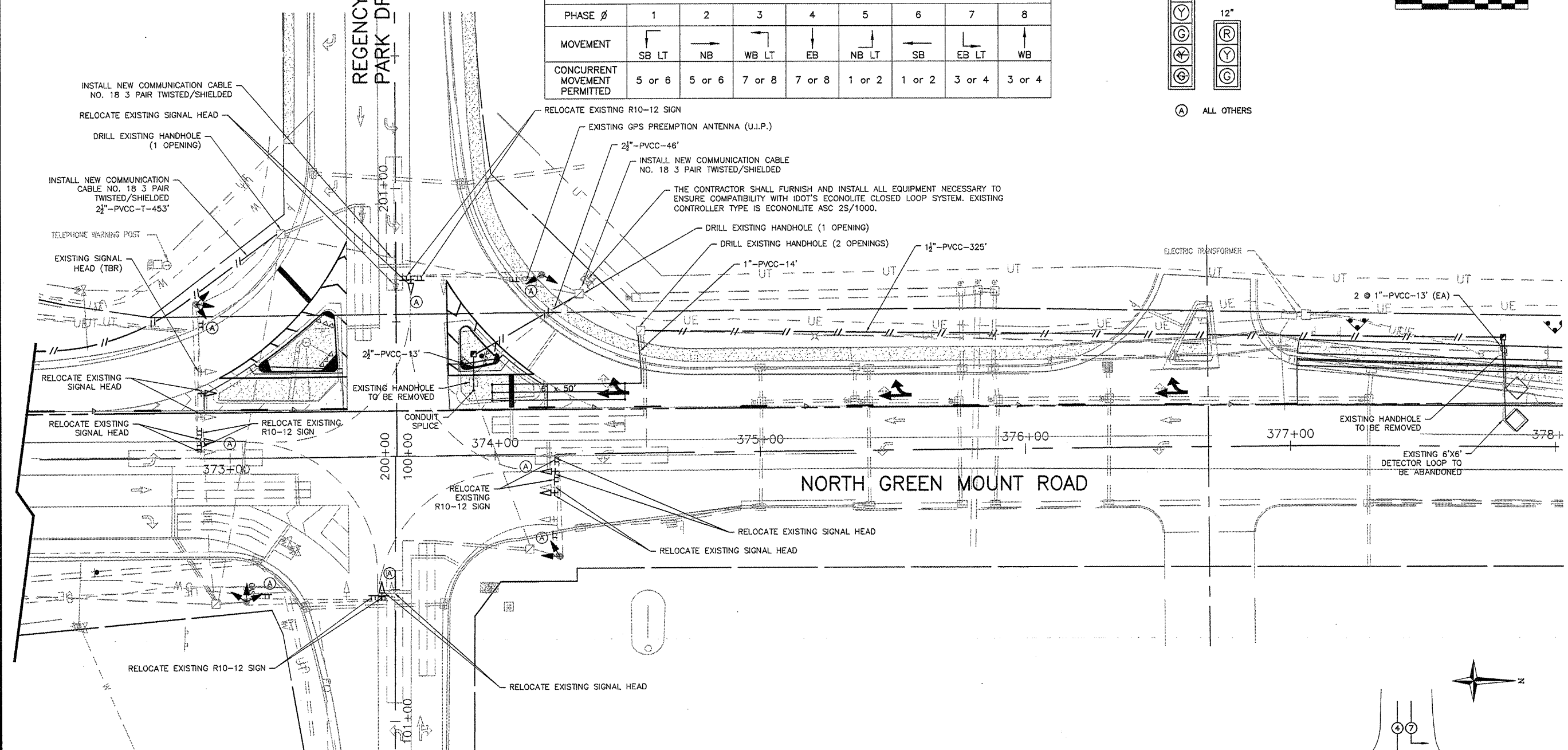
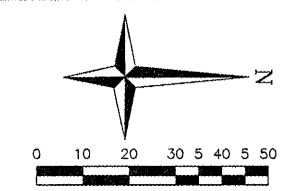
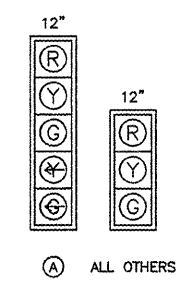
**CBB** Crawford, Bunte, Brammeier  
Traffic and Transportation Engineers  
St. Louis, Missouri/Glen Carbon, Illinois  
314-878-6644 618-656-2612  
Fax: 314-878-5876 E-Mail: cbb@cbbtraffic.com

**TRAFFIC SIGNAL PLANS**  
N. GREEN MOUNT ROAD & I-64  
E.B. RAMP, W.B. RAMP &  
REGENCY PARK/PIERCE BLVD  
SHILOH, ILLINOIS

**CONTROLLER PHASING**

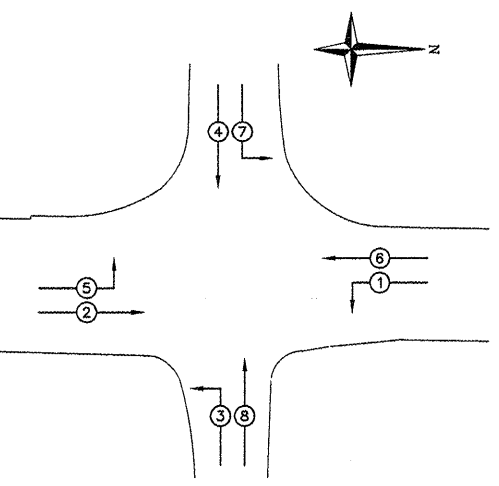
	PROPOSED							
PHASE $\phi$	1	2	3	4	5	6	7	8
MOVEMENT	SB LT	NB	WB LT	EB	NB LT	SB	EB LT	WB
CONCURRENT MOVEMENT PERMITTED	5 or 6	5 or 6	7 or 8	7 or 8	1 or 2	1 or 2	3 or 4	3 or 4

**TRAFFIC SIGNAL FACES**



**TRAFFIC SIGNAL LEGEND**

- |  |   |  |                            |
|--|---|--|----------------------------|
|  | PROPOSED TRAFFIC SIGNAL MAST ARM WITH STREET NAME SIGN AND TRAFFIC SIGN |  | PROPOSED DETECTOR LOOP     |
|  | EXISTING HANDHOLE   |  | POLYVINYL CHLORIDE CONDUIT |
|  | PROPOSED HANDHOLE   |  | GALVANIZED STEEL CONDUIT   |
|  | PROPOSED DOUBLE HANDHOLE  |  | PROPOSED CONTROLLER        |
|  | PROPOSED CONDUIT: "T" TRENCH, "P" PUSHED, SIZE SPECIFIED                |  | EXISTING CONTROLLER        |
|  | EXISTING SERVICE INSTALLATION   |  | TRAFFIC SIGN               |
|  | EXISTING GPS PREEMPTION ANTENNA   |  | STREET NAME SIGN           |



**PHASE DESIGNATION DIAGRAM**

F.A.U. RTE.	SECTION	COUNTY
9170	08-00333-12-PW ST. CLAIR	ILLINOIS
	CONTRACT NO. 97492	