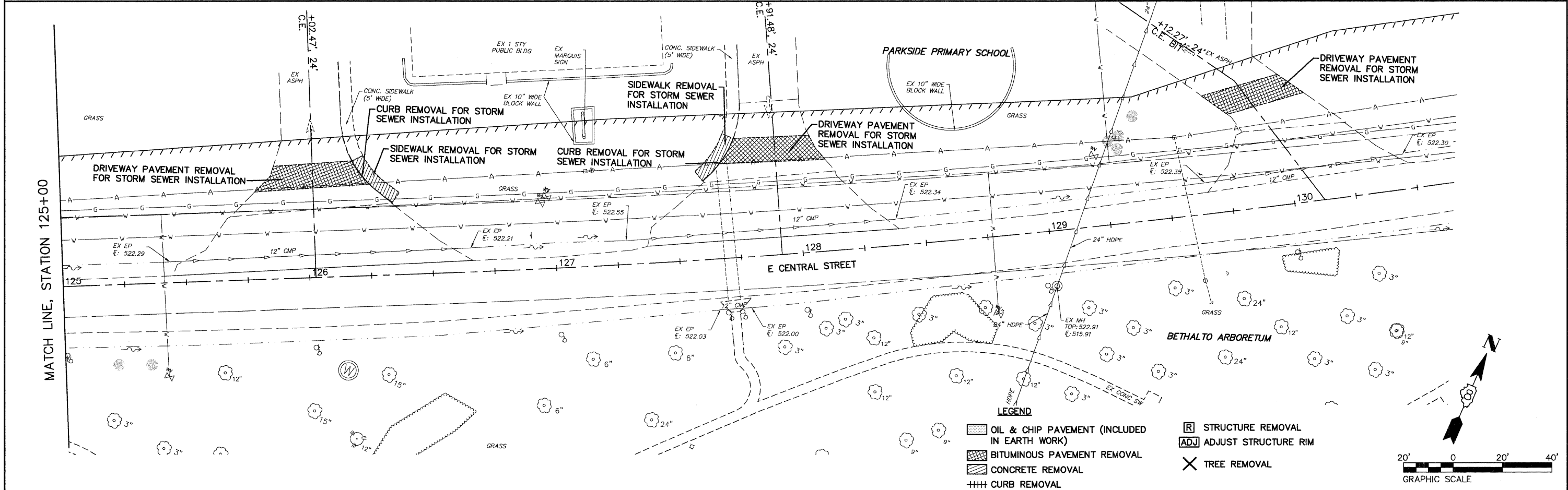
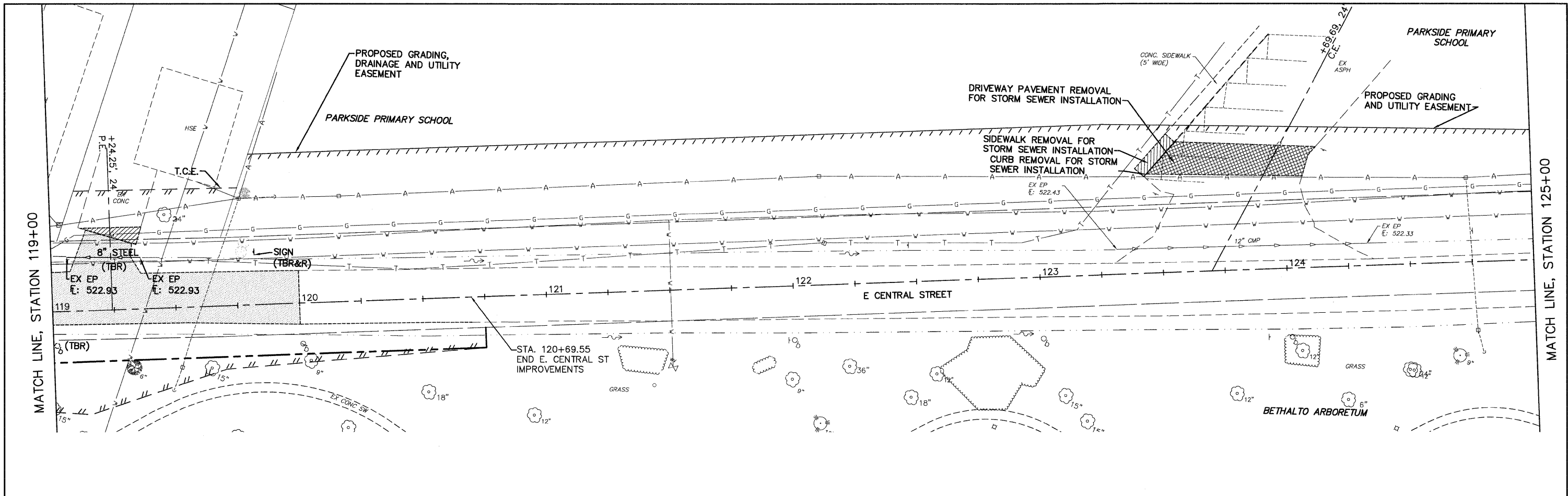


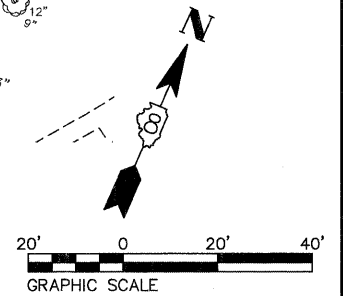
PLAN	SURVEYED	DATE
	ALIGNED	BY
	CHECKED	
	RT. OF WAY CHECKED	
	NO. OF W.A. CHECKED	
	ADD. FILE NAME	

PROFILE	SURVEYED	DATE
	GRADES CHECKED	BY
	S.M. NOTED	
	STRUCTURE NOTATIONS CHKD	



LEGEND

- OIL & CHIP PAVEMENT (INCLUDED IN EARTH WORK)
- BITUMINOUS PAVEMENT REMOVAL
- CONCRETE REMOVAL
- CURB REMOVAL
- STRUCTURE REMOVAL
- ADJUST STRUCTURE RIM
- TREE REMOVAL



08026-sht-REMOVAL.dwg
 USER NAME = Robert Watson
 PLOT SCALE =
 PLOT DATE = 3/21/2012

DESIGNED - M.J.R.	REVISED -
DRAWN - R.A.W.	REVISED -
CHECKED - E.R.O.	REVISED -
DATE - 3/21/12	REVISED -

**STATE OF ILLINOIS
 DEPARTMENT OF TRANSPORTATION**

REMOVAL PLAN

SCALE: SHEET NO. 23 OF 62 SHEETS STA. 119+00 TO STA. 130+50

F.A.U. RTE. 8959	SECTION 08-00026-00-WR	COUNTY MADISON	TOTAL SHEETS 62	SHEET NO. 23
CONTRACT NO. 97493				
BETHALTO ILLINOIS FED. AID PROJECT				