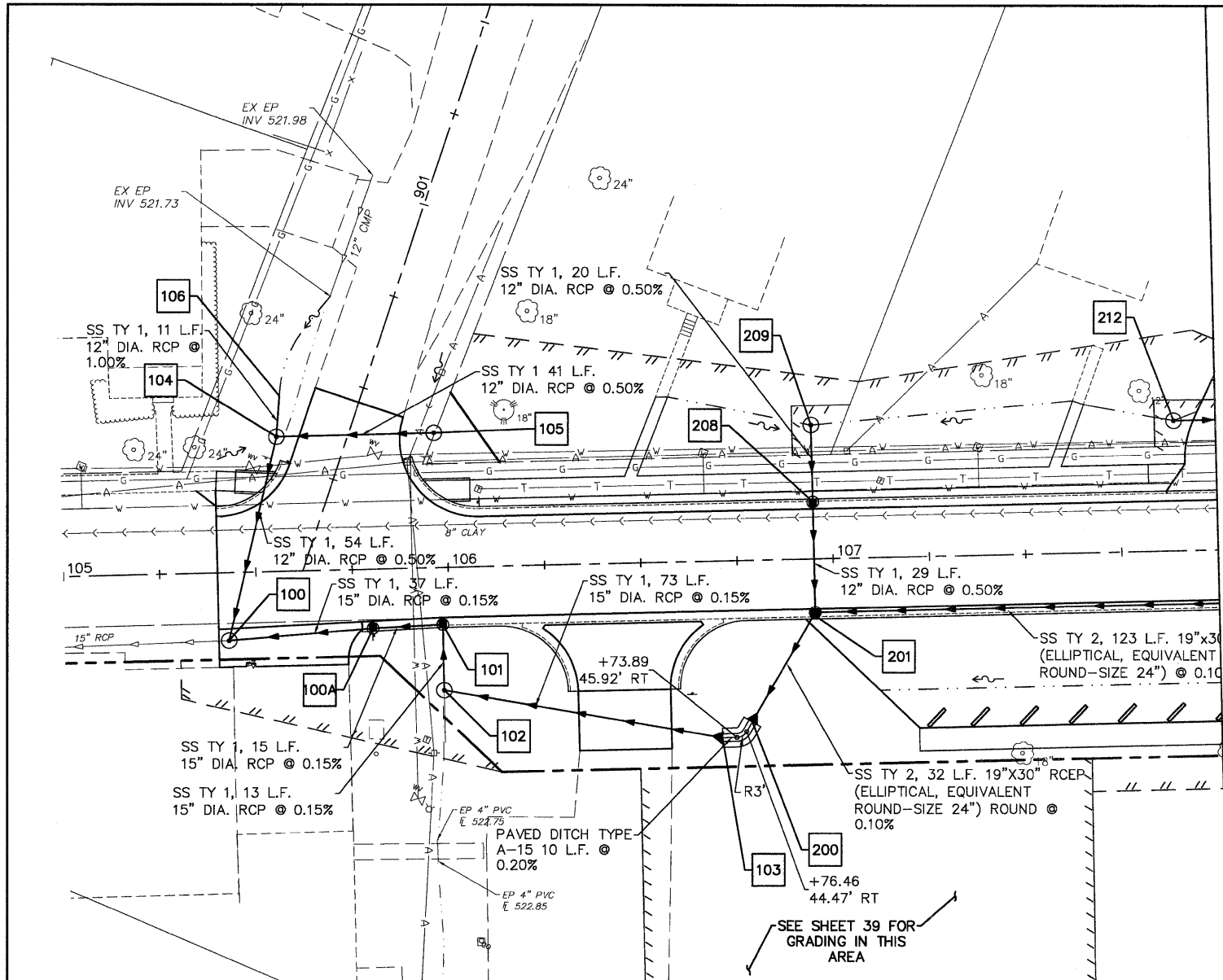


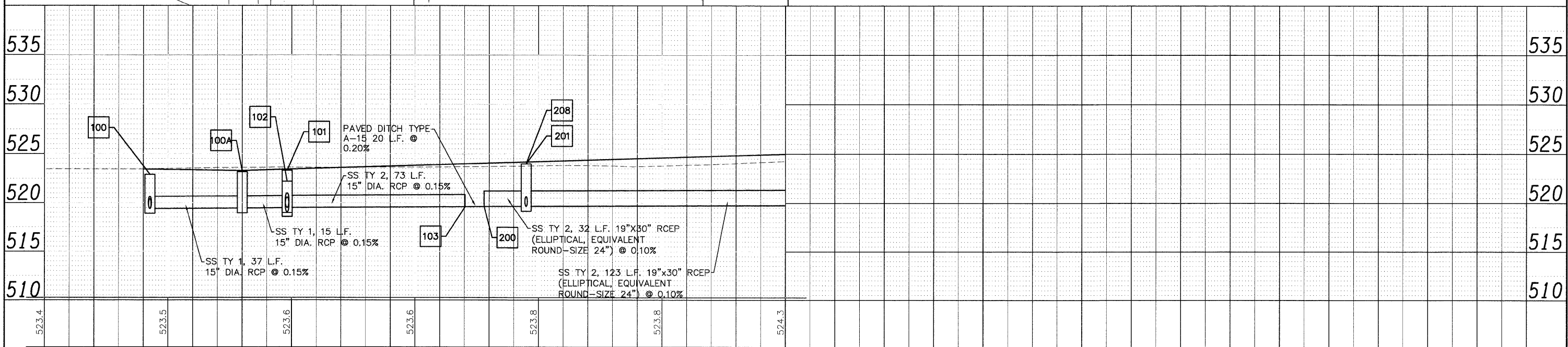
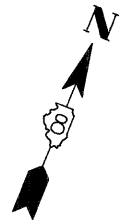
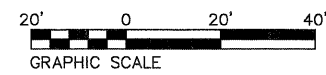
DATE: _____ BY: _____
 SURVEYED _____
 ALIGNED _____
 CHECKED _____
 RT. OF WAY _____
 NO. _____
 PLAN _____
 NOTE BOOK _____
 NO. _____

DATE: _____ BY: _____
 SURVEYED _____
 GRADES _____
 CHECKED _____
 B.M. NOTED _____
 STRUCTURE NOTATIONS _____
 NO. _____
 PROFILE _____
 NOTE BOOK _____
 NO. _____



STRUCT NUMBER	STATION	OFFSET	RIM ELEV.	INVERT ELEV.	STRUCTURE TYPE
E. CENTRAL ST.					
100*	105+42.65	17.64' RT	522.90	519.40	MANHOLE T-A, FLAT SLAB TOP, 4' DIA., TYPE 1 FRAME, OPEN LID
100A	105+80.06	13.51' RT	523.18	519.46	INLET T-B, W/ TYPE 3 FRAME & GRATE
101	105+98.22	13.00' RT	523.32	519.48	MANHOLE T-A, FLAT SLAB TOP, 4' DIA., TYPE 3V FRAME & GRATE
102*	105+98.20	31.93' RT	522.30	519.51	INLET T-B, W/ TYPE 8 GRATE
103**	106+70.22	45.92' RT	---	519.62	FLARED END SECTION, 15"
104*	105+56.15	35.00' LT	523.00	519.67	INLET T-B, W/ TYPE 8 GRATE
105*	105+97.03	35.00' LT	522.50	519.88	INLET T-B, W/ TYPE 8 GRATE
106**	105+57.15	45.48' LT	---	519.78	FLARED END SECTION, 12"
200**	106+77.97	41.97' RT	---	519.64	FLARED END SECTION, 19" X 30" (ELLIPTICAL, EQUIVALENT ROUND-SIZE 24")
201	106+95.00	13.00' RT	523.98	519.66	MANHOLE T-A, FLAT SLAB TOP, 4' DIA., TYPE 24 FRAME & GRATE
208	106+95.00	13.00' LT	523.98	519.81	INLET T-B, FLAT SLAB TOP, TYPE 3V FRAME & GRATE
209*	106+95.00	34.83' LT	523.00	519.91	INLET T-B, FLAT SLAB TOP W/ TYPE 8 GRATE
212	107+89.16	33.83' LT	523.70	520.18	INLET T-B, FLAT SLAB TOP W/ TYPE 8 GRATE

NOTE: STATION, OFFSET AND RIM ELEVATIONS ARE TO THE EDGE OF PAVEMENT UNLESS NOTED. *INDICATES MEASUREMENTS AT CENTER OF STRUCTURE, **INDICATES MEASUREMENTS AT END OF FLARED END SECTION.



08026-Sht-Drain.dwg	USER NAME = Robert Watson	DESIGNED - M.J.R.	REVISED -	STATE OF ILLINOIS DEPARTMENT OF TRANSPORTATION	DRAINAGE AND UTILITY PLAN	SCALE: 1:20H, 1:5V	SHEET NO. 32 OF 62 SHEETS	STA. 105+00 TO STA. 111+00	F.A.U. RTE. 8959	SECTION 08-00026-00-WR	COUNTY MADISON	TOTAL SHEETS 62	SHEET NO. 32	
		DRAWN - R.A.W.	REVISED -			CONTRACT NO. 97493				BETHALTO ILLINOIS FED. AID PROJECT				
		CHECKED - E.R.O.	REVISED -											
		DATE - 3/21/12	REVISED -											