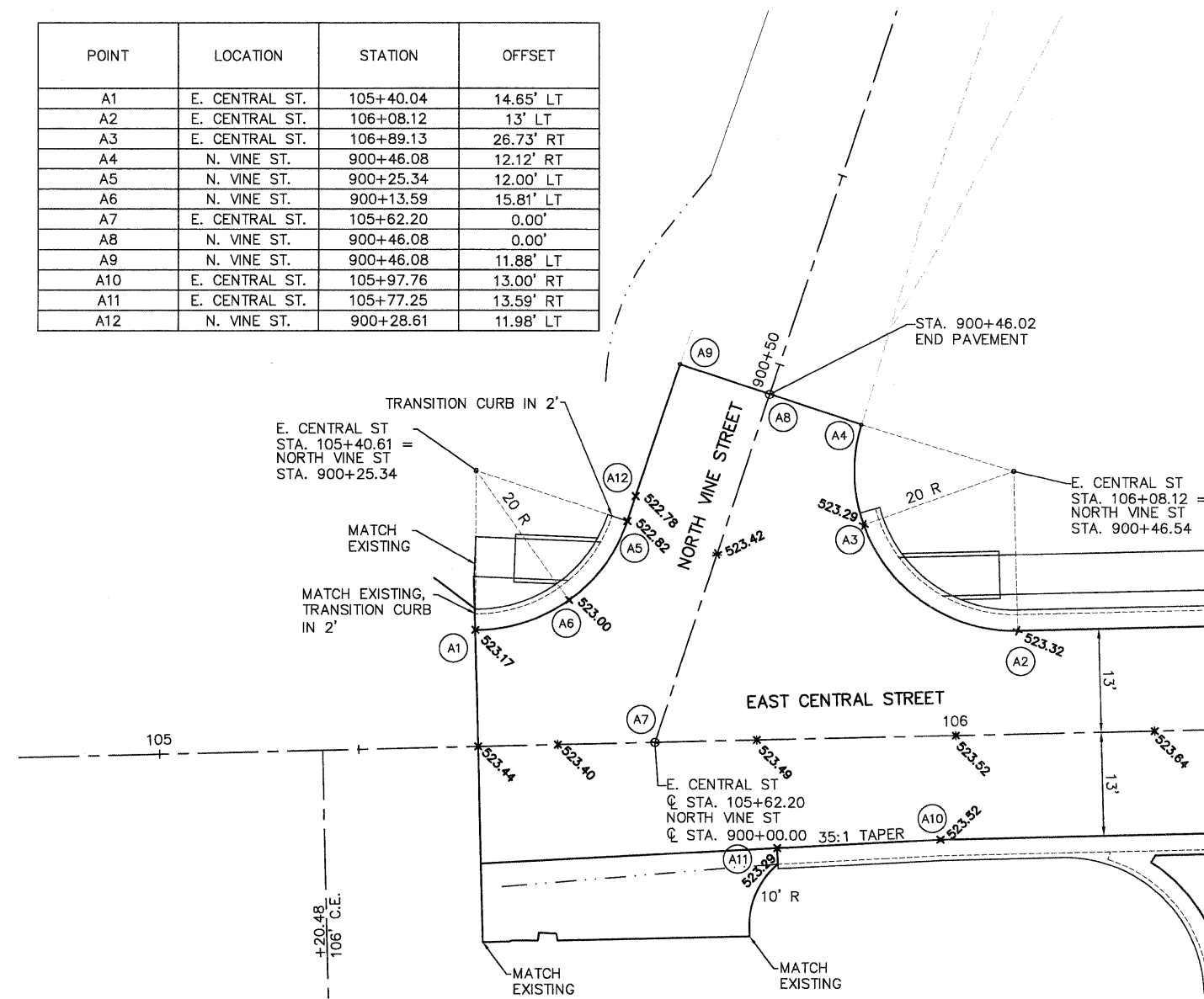


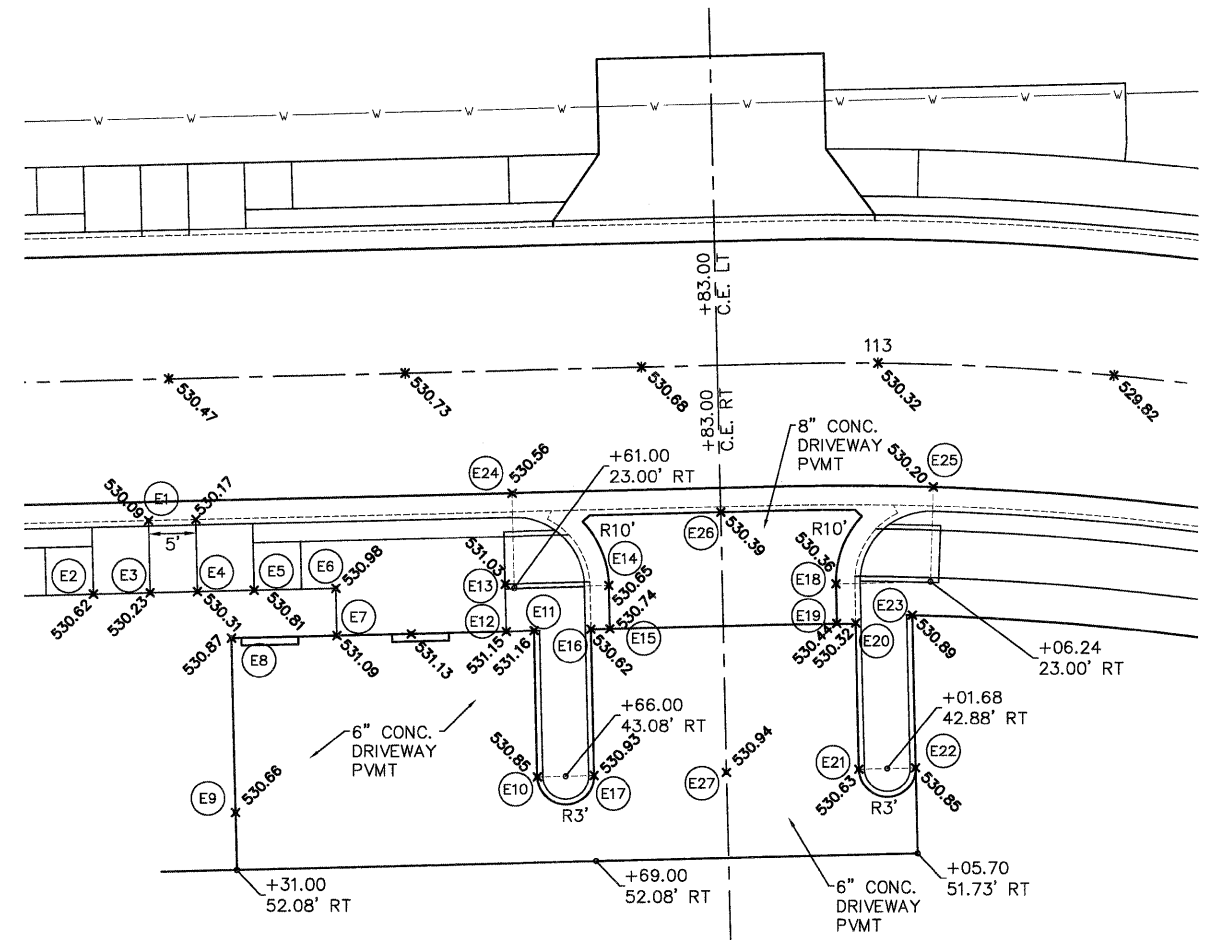
PLAN	DATE
BY	
SURVEYED	
ALIGNED	
CHECKED	
RT. OF WAY	
CHECKED	
NO.	

POINT	LOCATION	STATION	OFFSET
A1	E. CENTRAL ST.	105+40.04	14.65' LT
A2	E. CENTRAL ST.	106+08.12	13' LT
A3	E. CENTRAL ST.	106+89.13	26.73' RT
A4	N. VINE ST.	900+46.08	12.12' RT
A5	N. VINE ST.	900+25.34	12.00' LT
A6	N. VINE ST.	900+13.59	15.81' LT
A7	E. CENTRAL ST.	105+62.20	0.00'
A8	N. VINE ST.	900+46.08	0.00'
A9	N. VINE ST.	900+46.08	11.88' LT
A10	E. CENTRAL ST.	105+97.76	13.00' RT
A11	E. CENTRAL ST.	105+77.25	13.59' RT
A12	N. VINE ST.	900+28.61	11.98' LT



INTERSECTION DETAIL
NORTH VINE STREET WITH EAST CENTRAL STREET
SCALE: 1"=10'

PROFILE	DATE
BY	
SURVEYED	
GRADES	
CHECKED	
B.M. NOTED	
STRUCTURE	
NOTATIONS	
CHRD	
NO.	



POINT	LOCATION	STATION	OFFSET
E1	E. CENTRAL ST.	112+22.50	15.00' RT
E2	E. CENTRAL ST.	112+16.50	22.58' RT
E3	E. CENTRAL ST.	112+22.50	22.58' RT
E4	E. CENTRAL ST.	112+27.50	22.58' RT
E5	E. CENTRAL ST.	112+33.50	28.58' RT
E6	E. CENTRAL ST.	112+42.14	22.58' RT
E7	E. CENTRAL ST.	112+42.14	27.58' RT
E8	E. CENTRAL ST.	112+31.00	27.58' RT
E9	E. CENTRAL ST.	112+31.00	46.08' RT
E10	E. CENTRAL ST.	112+63.00	43.08' RT
E11	E. CENTRAL ST.	112+63.00	27.58' RT
E12	E. CENTRAL ST.	112+60.07	27.58' RT
E13	E. CENTRAL ST.	112+60.07	22.58' RT
E14	E. CENTRAL ST.	112+71.00	23.00' RT
E15	E. CENTRAL ST.	112+71.00	27.58' RT
E16	E. CENTRAL ST.	112+69.00	27.58' RT
E17	E. CENTRAL ST.	112+69.00	43.08' RT
E18	E. CENTRAL ST.	112+95.44	23.36' RT
E19	E. CENTRAL ST.	112+95.53	27.53' RT
E20	E. CENTRAL ST.	112+97.72	27.49' RT
E21	E. CENTRAL ST.	112+98.20	42.98' RT
E22	E. CENTRAL ST.	113+05.15	42.75' RT
E23	E. CENTRAL ST.	113+04.27	26.58' RT
E24	E. CENTRAL ST.	112+61.00	13.00' RT
E25	E. CENTRAL ST.	113+06.24	13.00' RT
E26	E. CENTRAL ST.	112+83.00	15.58' RT
E27	E. CENTRAL ST.	112+83.00	43.08' RT

INTERSECTION DETAIL
PARK ENTRANCE
SCALE: 1"=10'

08026-sht-Int Det.dwg

USER NAME = Robert Watson	DESIGNED - M.J.R.	REVISED -
	DRAWN - R.A.W.	REVISED -
PLOT SCALE =	CHECKED - E.R.O.	REVISED -
PLOT DATE = 3/21/2012	DATE - 3/21/12	REVISED -

STATE OF ILLINOIS
DEPARTMENT OF TRANSPORTATION

INTERSECTION DETAILS	
SCALE: 1"=10'	SHEET NO. 40 OF 62 SHEETS
STA.	TO STA.

F.A.U. RTE.	SECTION	COUNTY	TOTAL SHEETS	SHEET NO.
8959	08-00026-00-WR	MADISON	62	40
CONTRACT NO. 97493				
BETHALTO		ILLINOIS FED. AID PROJECT		