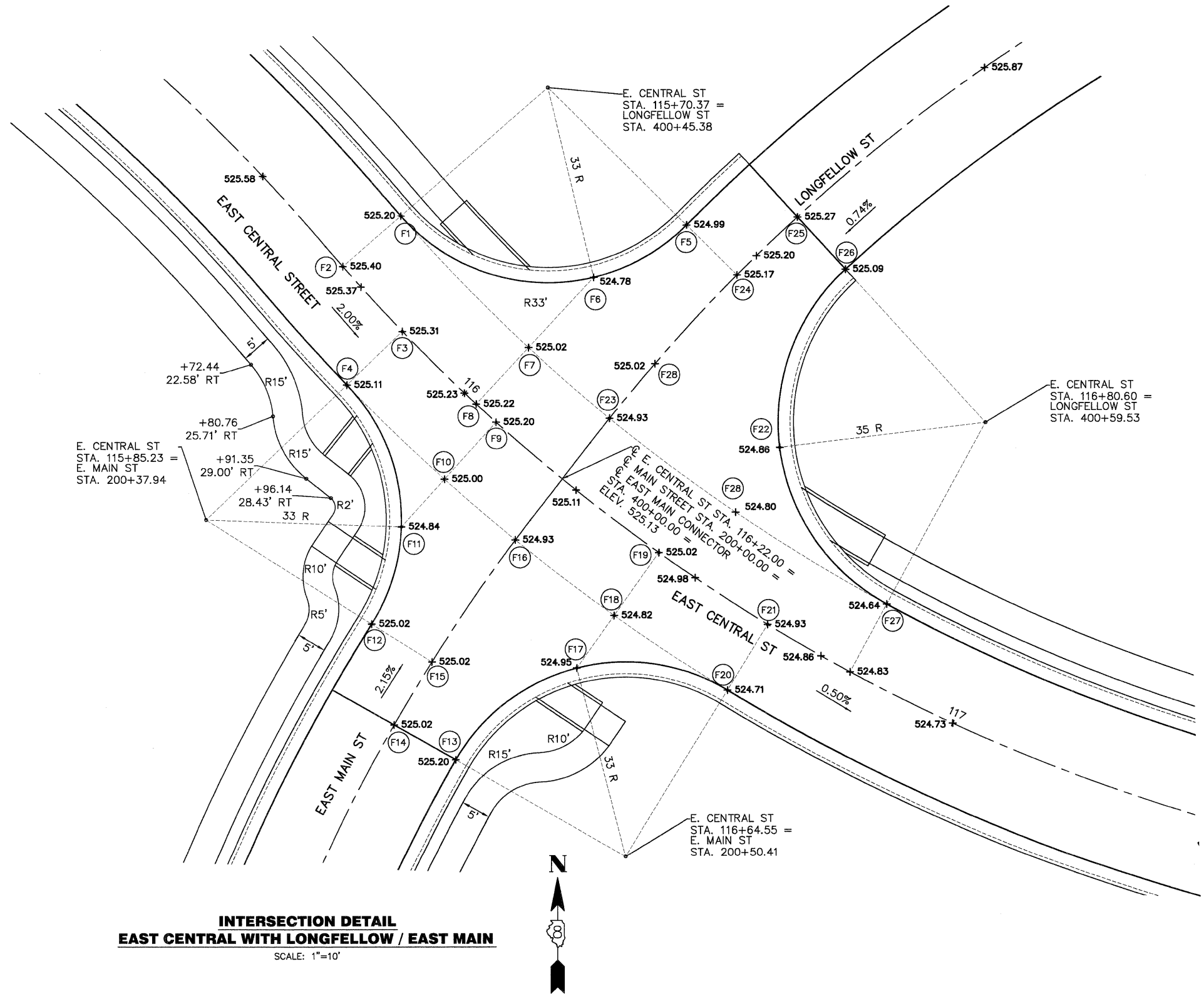


PLAN	SURVEYED	DATE
NOTE BOOK	ALIGNED	BY
NO.	RT. OF WAY CHECKED	
	ADD FILE NAME	

PROFILE	SURVEYED	DATE
NOTE BOOK	GRADES CHECKED	BY
NO.	STRUCTURE NOTATIONS CHKD	

POINT	LOCATION	STATION	OFFSET
F1	E. CENTRAL ST.	115+70.37	13.00' LT
F2	E. CENTRAL ST.	115+70.37	0.00'
F3	E. CENTRAL ST.	115+85.23	0.00'
F4	E. CENTRAL ST.	115+85.23	13.00' RT
F5	LONGFELLOW ST.	400+45.38	12.00' LT
F6	LONGFELLOW ST.	400+29.00	17.38' LT
F7	E. CENTRAL ST.	116+02.71	13.00' LT
F8	E. CENTRAL ST.	116+02.71	0.00'
F9	E. CENTRAL ST.	116+07.26	0.00'
F10	E. CENTRAL ST.	116+07.26	13.00' RT
F11	E. MAIN ST.	200+22.28	16.87' RT
F12	E. MAIN ST.	200+37.94	12.00' RT
F13	E. MAIN ST.	200+50.41	12.00' LT
F14	E. MAIN ST.	200+50.41	0.00'
F15	E. MAIN ST.	200+37.94	0.00'
F16	E. CENTRAL ST.	116+22.39	13.00' RT
F17	E. MAIN ST.	200+24.90	21.02' LT
F18	E. CENTRAL ST.	116+42.53	13.00' RT
F19	E. CENTRAL ST.	116+42.53	0.00'
F20	E. CENTRAL ST.	116+64.55	13.00' RT
F21	E. CENTRAL ST.	116+64.55	0.00'
F22	LONGFELLOW ST.	400+28.36	25.20' RT
F23	E. CENTRAL ST.	116+21.65	13.00' LT
F24	LONGFELLOW ST.	400+45.38	0.00'
F25	LONGFELLOW ST.	400+59.53	0.00'
F26	LONGFELLOW ST.	400+59.53	12.00' RT
F27	E. CENTRAL ST.	116+80.60	13.00' LT
F28	E. CENTRAL ST.	116+49.41	13.00' LT



INTERSECTION DETAIL
EAST CENTRAL WITH LONGFELLOW / EAST MAIN
 SCALE: 1"=10'

08026-sht-int Det.dwg

USER NAME = Robert Watson	DESIGNED - M.J.R.	REVISED -
	DRAWN - R.A.W.	REVISED -
PLOT SCALE =	CHECKED - E.R.O.	REVISED -
PLOT DATE = 3/21/2012	DATE - 3/21/12	REVISED -

STATE OF ILLINOIS
DEPARTMENT OF TRANSPORTATION

INTERSECTION DETAIL

SCALE: 1"=10' SHEET NO. 43 OF 62 SHEETS STA. 115+50 TO STA. 117+25

F.A.U. RTE. 8959	SECTION 08-00026-00-WR	COUNTY MADISON	TOTAL SHEETS 62	SHEET NO. 43
CONTRACT NO. 97493				
BETHALTO ILLINOIS FED. AID PROJECT				