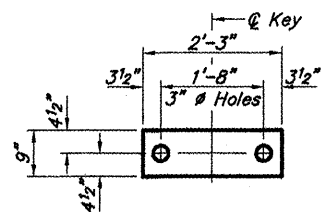
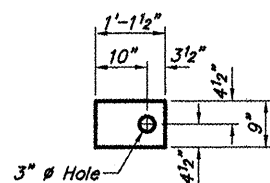


ROUTE	SECTION	COUNTY	TOTAL SHEETS	SHEET NO
TR 93	00-01199-00-BR	MASSAC	18	10
PROJECT NO. BROS-127(18)			CONTRACT NO. 99438	



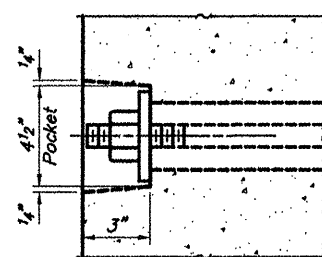
**FABRIC BEARING PAD**  
(Interior)



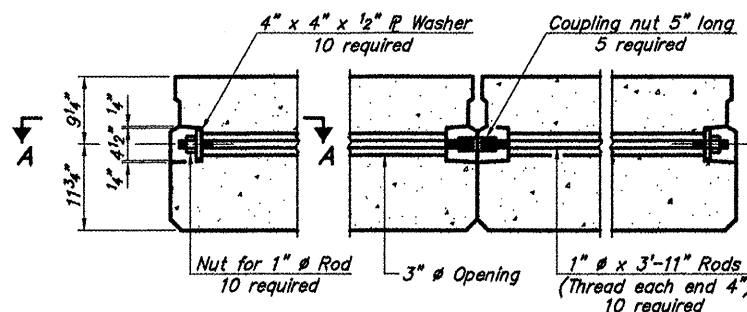
**FABRIC BEARING PAD**  
(Exterior)

**FIXED**

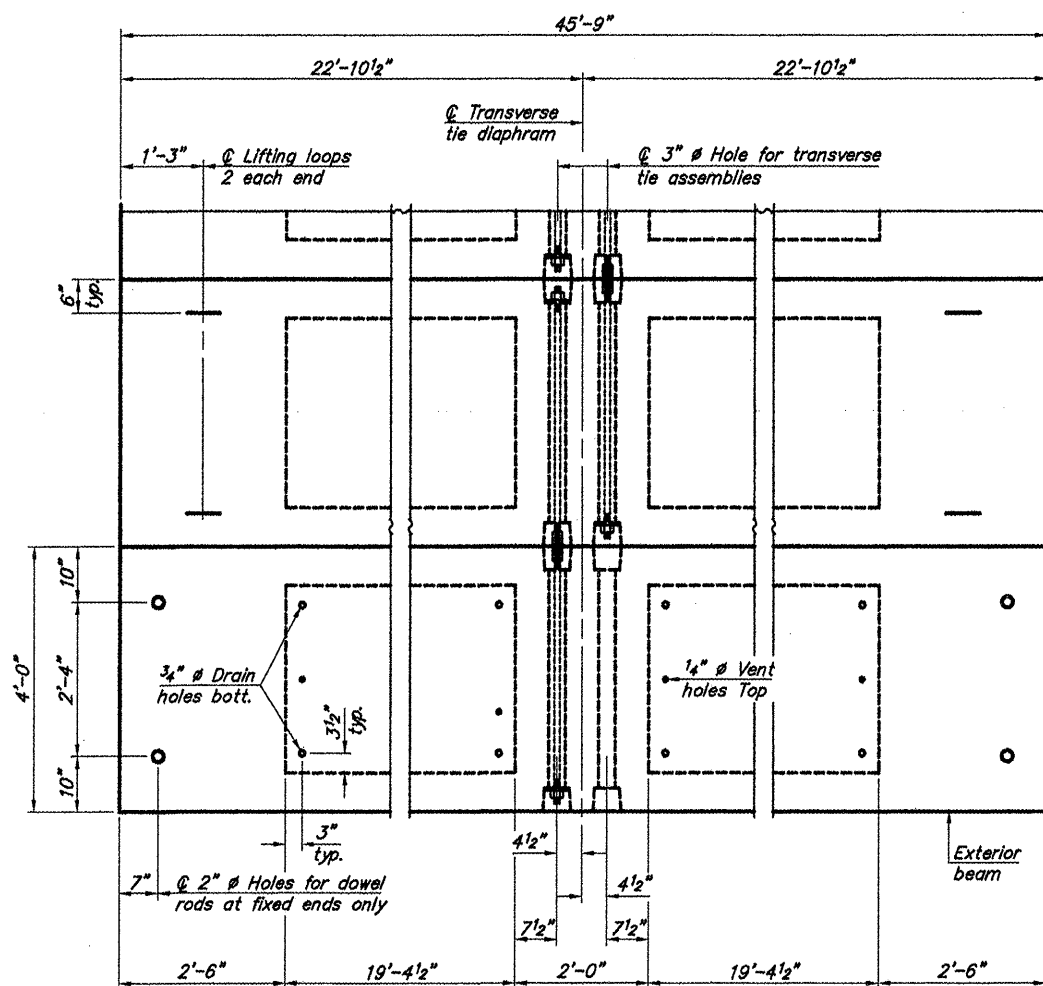
Note: Omit holes when using expansion bearings.



**SECTION A-A**



**TYPICAL TRANSVERSE TIE ASSEMBLY**

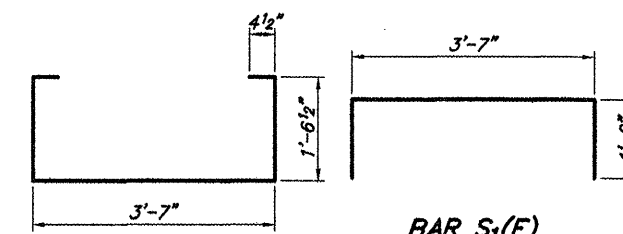


**PLAN VIEW**

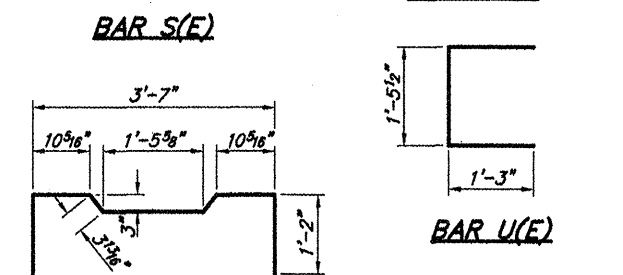
Note: Connect beams in pairs with the transverse tie configuration shown.

**NOTES**

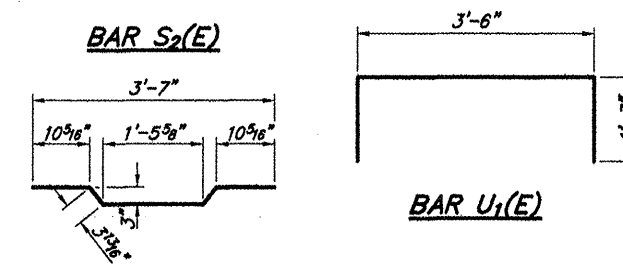
- Prestressing steel shall be uncoated high strength, low relaxation 7-wire strand, Grade 270. The nominal diameter shall be 1/2" and the nominal cross-sectional area shall be 0.153 sq. in.
- The 1" rods in the transverse tie assembly shall be tightened to a snug fit and the threads set. Pockets on exterior faces of bridge shall be filled with grout after transverse tie assembly is in place.
- Reinforcement bars shall conform to ASTM A 706, Grade 60. (See Special Provisions).
- Two 1/8" fabric adjusting shims of the dimensions of the exterior bearing pad shall be provided for each bearing pad location.
- A minimum 2 1/2" diameter lifting pin shall be used to engage the lifting loops during handling.
- Corrosion inhibitor, per Article 1020.05(b)(12) and 1021.06 of the Standard Specifications, shall be used in the concrete for precast prestressed concrete deck beams.
- Compressive strength of prestressed concrete, f'c, shall be 6000 psi.
- Compressive strength of prestressed concrete at release, f'cl, shall be 5000 psi.



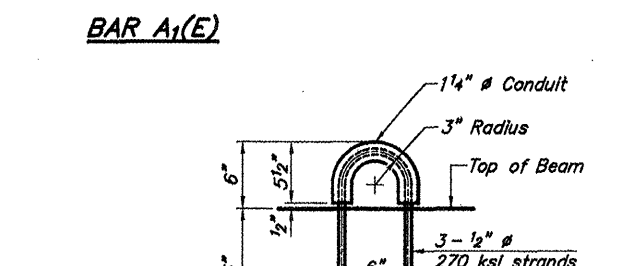
**BAR S1(E)**



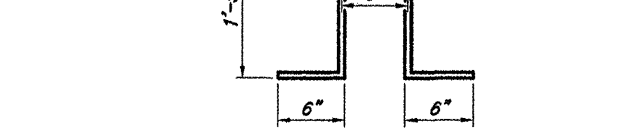
**BAR S(E)**



**BAR S2(E)**



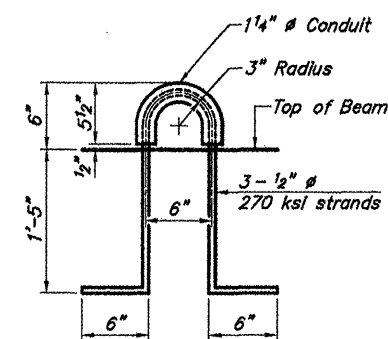
**BAR A1(E)**



**BAR U1(E)**



**BAR U(E)**



**LIFTING LOOP DETAIL**

**BILL OF MATERIAL - SPAN 3**

Precast Prestressed Concrete Deck Beams (21" depth)	Sq. Ft.	1098
---	---------	------

**21" X 48" PPC DECK BEAM DETAILS - SPAN 3**  
TOWNSHIP ROUTE 93 (SEILBECK ROAD)  
IC RAILROAD  
SECTION 00-01199-00-BR  
MASSAC COUNTY  
STRUCTURE NO. 064-3141