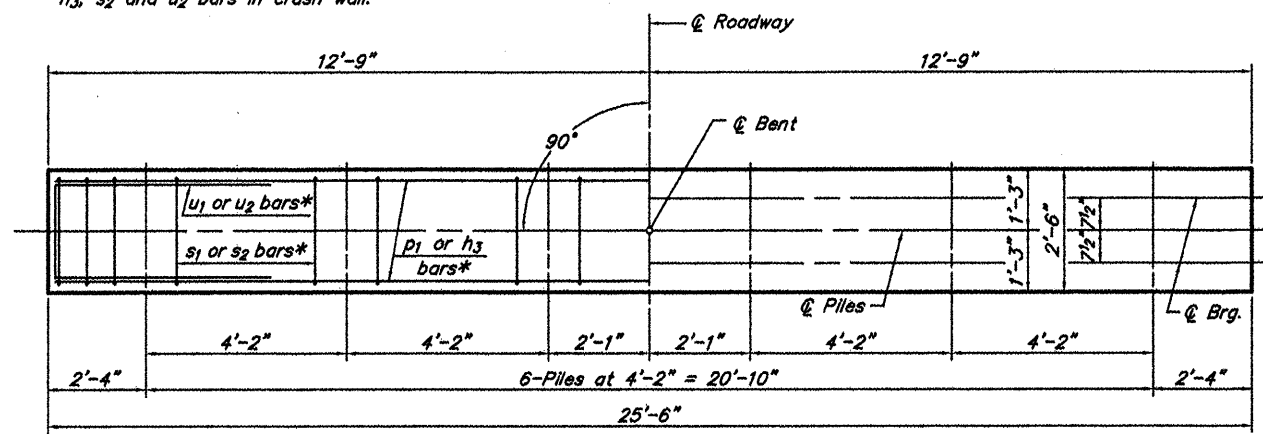
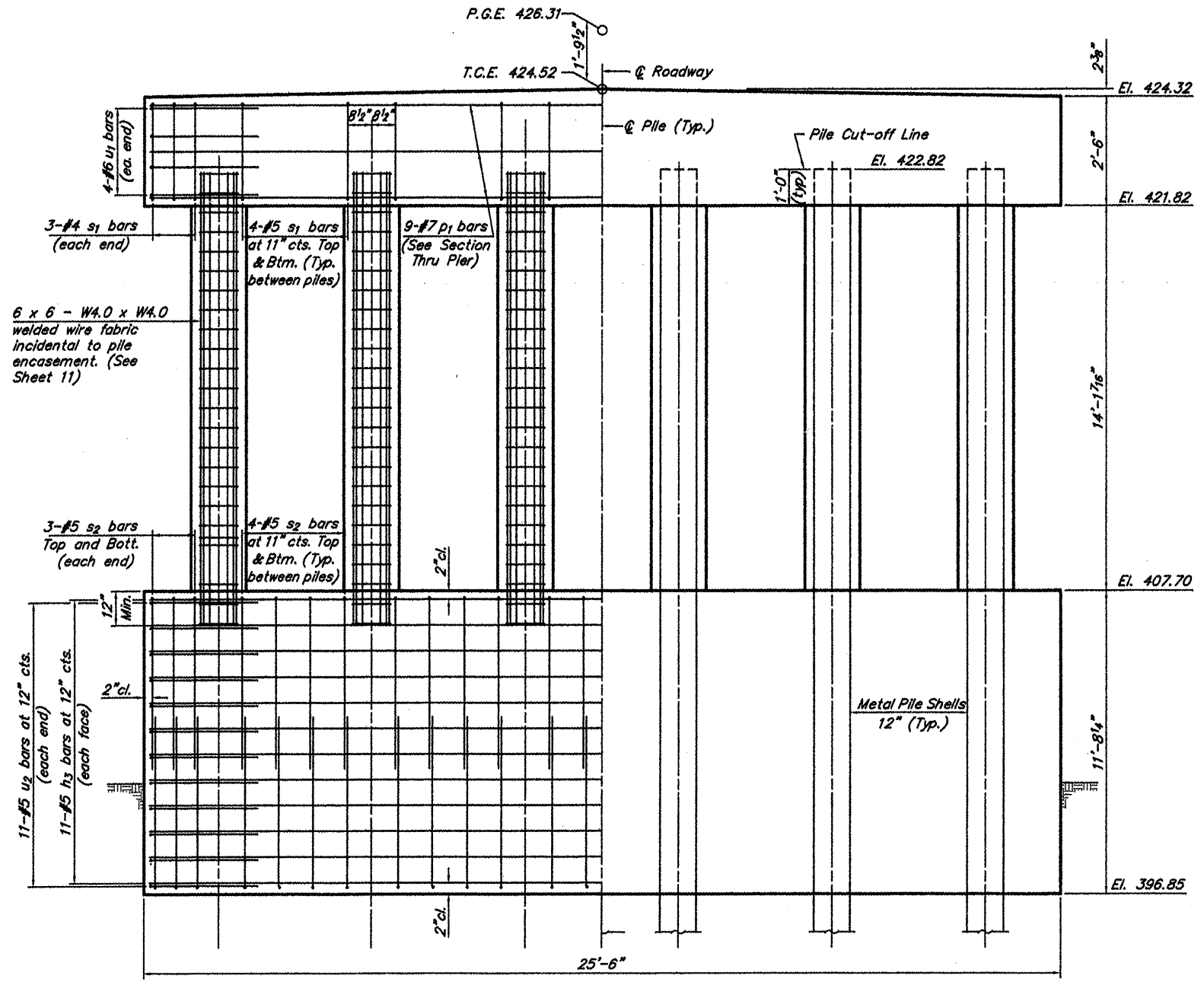


* Note: p_1 , s_1 and u_1 bars in cap
 h_3 , s_2 and u_2 bars in crash wall.

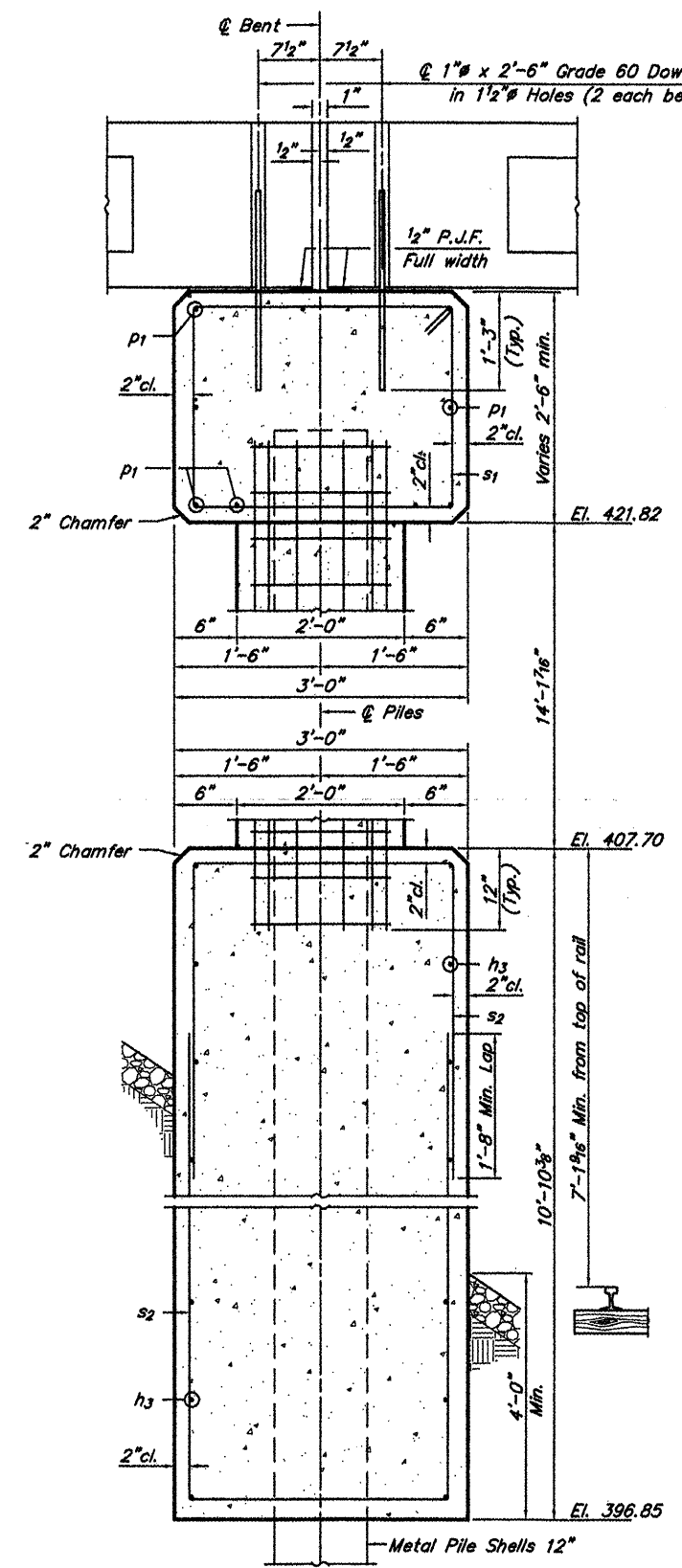
ROUTE	SECTION	COUNTY	TOTAL SHEETS	SHEET NO.
TR 93	00-01199-00-BR	MASSAC	18	12
PROJECT NO. BROS-127(18)			CONTRACT NO. 99438	



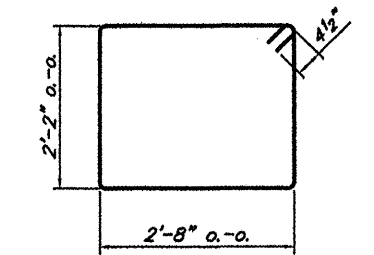
PLAN



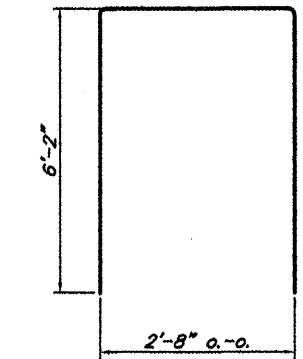
ELEVATION



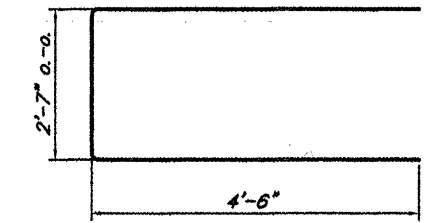
SECTION THRU ABUT.
 (At Right Angles)



Bar s1



Bar s2



Bar u1 & u2

BILL OF MATERIALS FOR ONE PIER

Bar	No.	Size	Length	Shape
h_3	22	#5	25'-2"	—
p_1	9	#7	25'-2"	—
s_1	26	#4	10'-5"	□
s_2	52	#5	15'-0"	□
u_1	8	#6	11'-7"	—
u_2	22	#5	11'-7"	—
Concrete Structures			38.2	Cu. Yds.
Concrete Encasement			7.4	Cu. Yds.
Reinforcement Bars			2,440	Lbs.

NOTES

1. Reinforcement bars shall conform to A.A.S.H.T.O. M-31 or M-322, Grade 60.
2. Nominal 1" joint at @ Pier shall be filled with non-shrink grout to top.

DESIGN STRESSES

$f'_c = 3,500$ psi
 $f_y = 60,000$ psi

PIER
 TOWNSHIP ROUTE 93 (SEILBECK ROAD)
 IC RAILROAD
 SECTION 00-01199-00-BR
 MASSAC COUNTY
 STRUCTURE NO. 064-3141