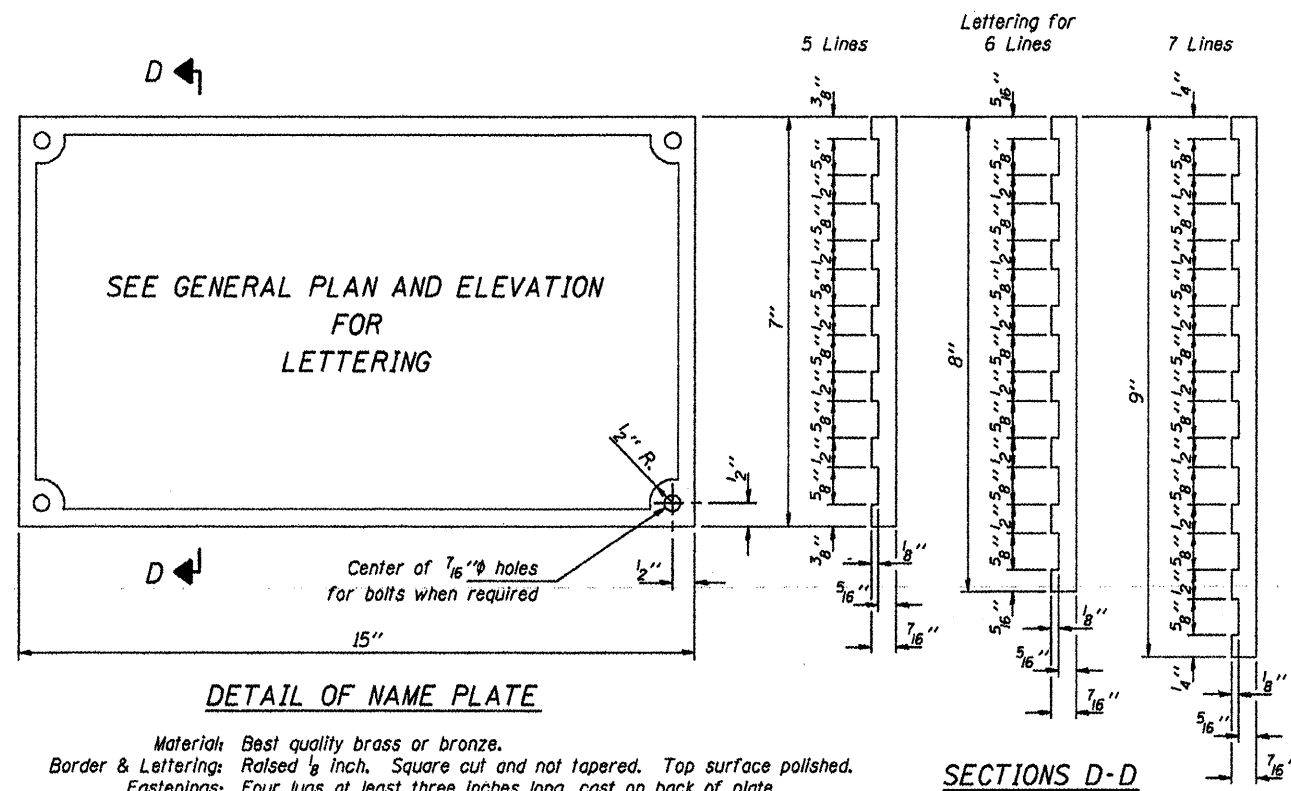
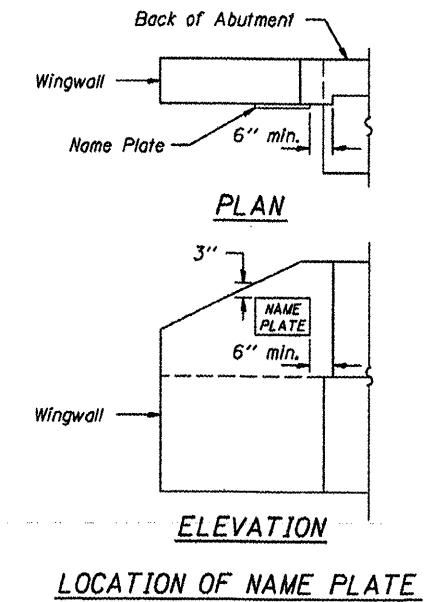


ROUTE	SECTION	COUNTY	TOTAL SHEETS	SHEET NO.
TR 93	00-01199-00-BR	MASSAC	18	14
PROJECT NO. BROS-127(18)			CONTRACT NO. 99438	



Material: Best quality brass or bronze.
 Border & Lettering: Raised $\frac{1}{8}$ inch. Square cut and not tapered. Top surface polished.
 Fastenings: Four lugs at least three inches long, cast on back of plate.



NAME PLATES
 TOWNSHIP ROUTE 93 (SEILBECK ROAD)
 IC RAILROAD
 SECTION 00-01199-00-BR
 MASSAC COUNTY
 STRUCTURE NO. 064-3141