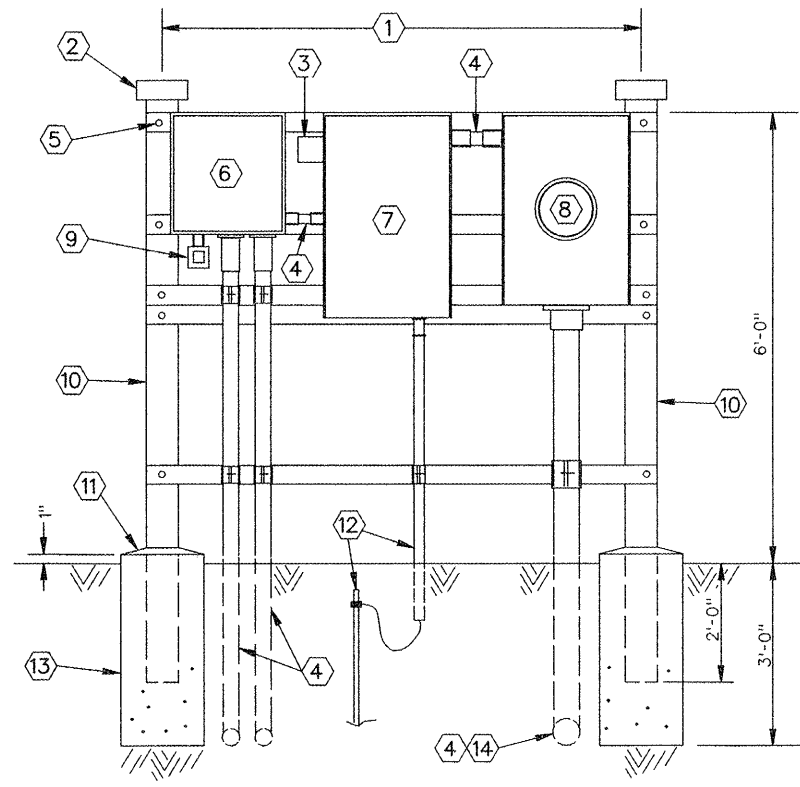


F.A.U. ROUTE	SECTION	COUNTY	TOTAL SHEETS	SHEET NUMBER
9910	10-00050-00-RS	UNION	16	10
CITY OF ANNA		PROJECT NO. M-5080(006)		
CONTRACT NO. 99470		JOB NO. C99-542-10		



**SERVICE DETAIL**  
NTS

**SERVICE DETAIL NOTES**

- ① WIDTH OF STRUCTURE SHALL BE AS REQUIRED TO MOUNT ALL ENCLOSURES.
- ② THREADED CAPS ON CONDUIT ENDS.
- ③ LIGHTNING ARRESTOR FOR 120/240 VOLT, SINGLE-PHASE SERVICE- SQUARE D \*SDSA1175 OR EQUAL. CONNECT TO LINE-SIDE OF MAIN BREAKER.
- ④ SEE SYSTEM 1-LINE DIAGRAM.
- ⑤ CROSS-MEMBERS SHALL BE 12 GA, 1 5/8" SQUARE, 316 STAINLESS STEEL STRUT; QUANTITY AS REQUIRED TO PROVIDE TOP AND BOTTOM SUPPORT FOR ENCLOSURES AND CONDUIT SHOWN. FASTEN TO POSTS WITH 1/2" DIAMETER, HEX-HEAD, 316 STAINLESS STEEL MACHINE BOLTS, NUTS AND LOCKWASHERS.
- ⑥ CONTROL PANEL- SEE DETAIL THIS SHEET.
- ⑦ 200 AMP, 120/240 VOLT, SINGLE PHASE, 3-WIRE S/N, MAIN BREAKER, 20 CIRCUIT MAIN DISTRIBUTION PANEL (MDP) IN NEMA 3R ENCLOSURE-SQUARE D \*Q012040M200RB. BRANCH BREAKERS SHALL BE PLUG-ON STYLE, SIZE AND QUANTITY PER SYSTEM 1-LINE DIAGRAM.
- ⑧ 200 AMP, 120/240 VOLT, SINGLE PHASE, 3-WIRE METER BASE BY CONTRACTOR TO AMEREN ILLINOIS STANDARDS.
- ⑨ 120 VOLT, 1900 VA, ADJUSTABLE, SWIVEL-MOUNT PHOTOCONTROL-PARAGON \*CW201S-00, OR EQUAL.

- ⑩ SUPPORT POSTS SHALL BE 3" DIAMETER, SCHEDULE 40 GALVANIZED CONDUIT, EMBEDDED IN CONCRETE BASE AS SHOWN.
- ⑪ SLOPE CONCRETE TO DRAIN AWAY FROM POSTS.
- ⑫ 1- \*4 GROUNDING ELECTRODE IN 1/2" SCHEDULE 80 PVC FROM THE PANEL BONDED NEUTRAL BUS TO A 3/8"X8' GROUND ROD DRIVEN 1FT TO THE TOP BELOW GRADE.
- ⑬ 1FT DIAMETER X 3 FT DEEP CONCRETE FOUNDATION, POURED AGAINST UNDISTURBED SOIL. TYPICAL FOR TWO.
- ⑭ SERVICE LATERAL CONDUIT TO AMEREN ILLINOIS POWER POLE PER SITE PLAN, SHEET 9.

**CONTROL PANEL SPECIFICATIONS**

MATERIALS OF EQUAL QUALITY AND PERFORMANCE TO THOSE COMPONENTS SPECIFIED BELOW WILL BE CONSIDERED FOR THIS PROJECT. SUBMITTALS SHALL BE PROVIDED FOR EACH COMPONENT FOR REVIEW BY THE ENGINEER.

ENCLOSURE SHALL BE 16" X 12" X 8" DEEP, HINGE-DOOR, LOCKABLE, NEMA 4 WITH WHITE BACK-PANEL AND INTERNAL WHITE SWING-OUT PANEL-HOFFMAN \*A16H12BLP/A16P12/ANADFK, OR EQUAL.

LIGHTING CONTACTORS SHALL BE 2-POLE, 30 AMP RATED, OPEN TYPE WITH 120 VAC COIL-SQUARE D, CLASS 8903, \*LO30V02, OR EQUAL.

HAND-OFF-AUTO SELECTOR SWITCHES SHALL BE 3-POSITION, MAINTAINED-CONTACT, 30 MM DIAMETER, NEMA 4X WITH LEGEND AND CONTACT ARRANGEMENT AS SHOWN-SQUARE D, CLASS 9001, \*SKS43BH13, OR EQUAL. MOUNT SWITCHES IN INNER SWING-OUT PANEL.

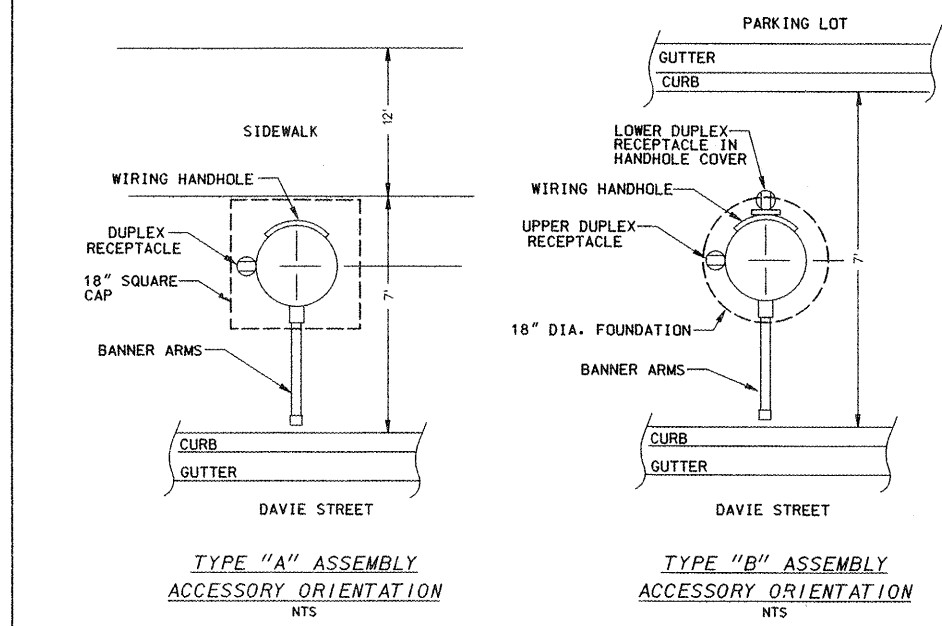
TIME CLOCK (TC) SHALL BE PROGRAMMABLE, SPDT, DIN-RAIL MOUNTED, 15 AMP RATED, WITH BACKUP BATTERY-PARAGON \*EC71D/30S/120V, OR EQUAL.

FIELD TERMINALS SHALL BE MODULAR DIN-RAIL BOX LUG TYPE, 30 AMP RATED. PROVIDE END CLAMPS TO PREVENT TERMINAL MOVEMENT.

ENCLOSURE CONDENSATION HEATER SHALL BE 120 VOLT, 25 WATT, FLANGE-MOUNTED STYLE WITH THERMOSTAT-WATLOW \*010050C1EYOCE, OR EQUAL.

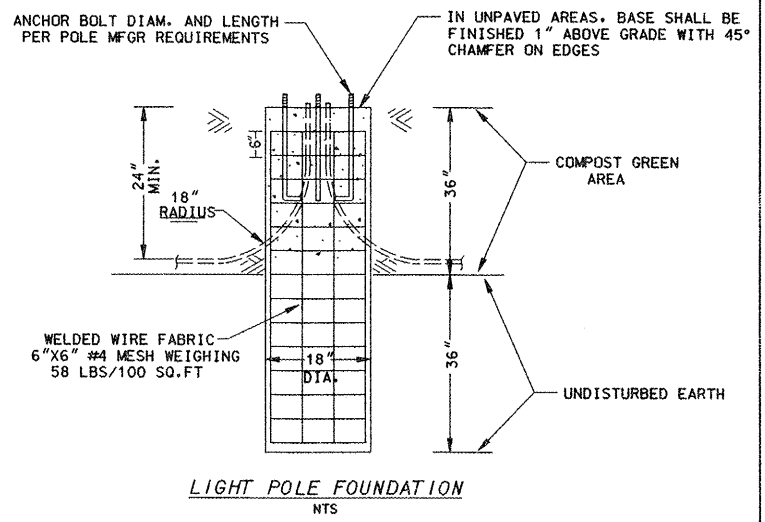
INTERNAL CONTROL WIRING SHALL BE \*16 AWG UNLESS NOTED OTHERWISE.

PROVIDE A CORROSION INHIBITOR-HOFFMAN \*AHCH1DV.

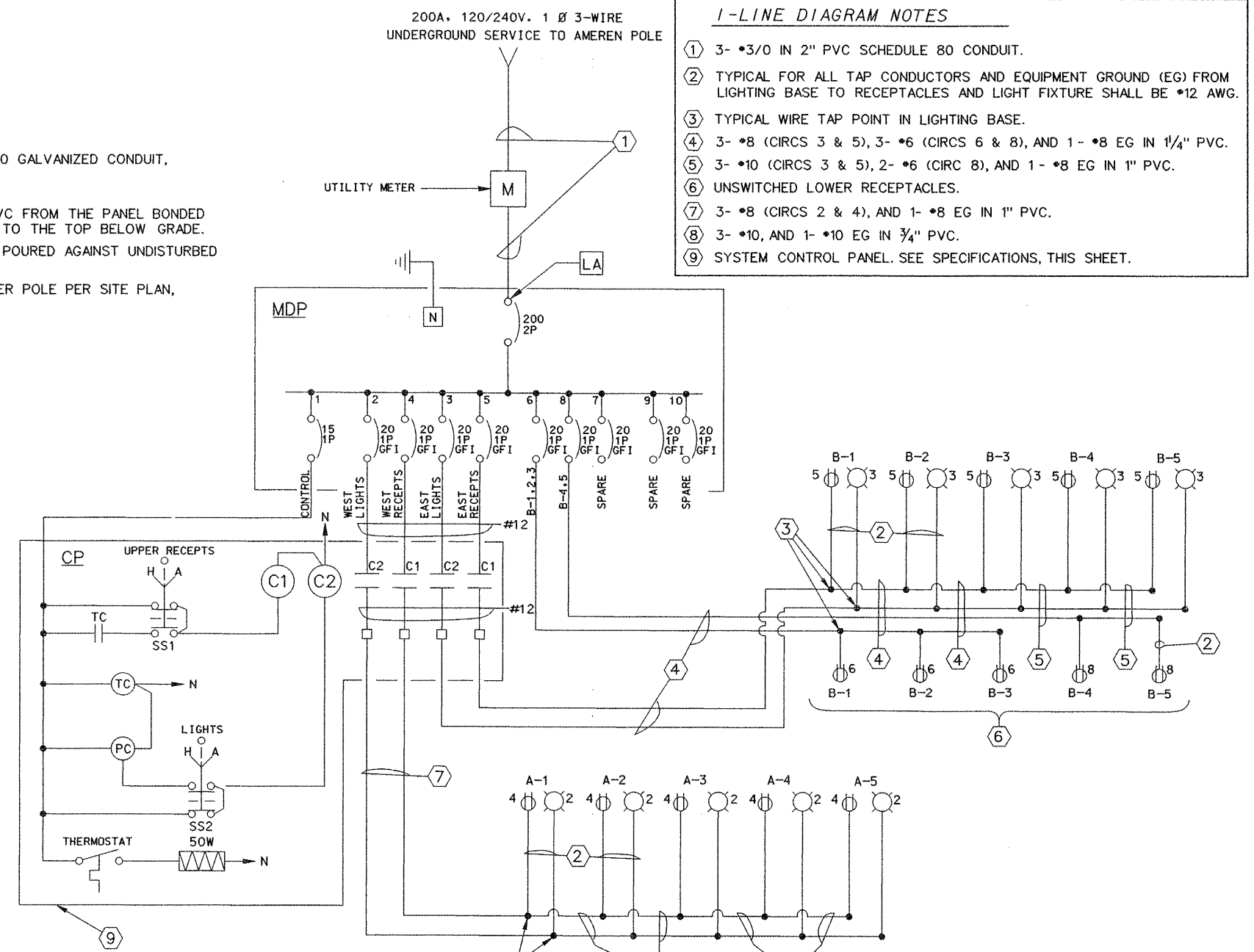


**TYPE "A" ASSEMBLY**  
ACCESSORY ORIENTATION  
NTS

**TYPE "B" ASSEMBLY**  
ACCESSORY ORIENTATION  
NTS



**LIGHT POLE FOUNDATION**  
NTS



- 1-LINE DIAGRAM NOTES**
- ① 3- \*3/0 IN 2" PVC SCHEDULE 80 CONDUIT.
  - ② TYPICAL FOR ALL TAP CONDUCTORS AND EQUIPMENT GROUND (EG) FROM LIGHTING BASE TO RECEPTACLES AND LIGHT FIXTURE SHALL BE \*12 AWG.
  - ③ TYPICAL WIRE TAP POINT IN LIGHTING BASE.
  - ④ 3- \*8 (CIRCS 3 & 5), 3- \*6 (CIRCS 6 & 8), AND 1- \*8 EG IN 1/4" PVC.
  - ⑤ 3- \*10 (CIRCS 3 & 5), 2- \*6 (CIRC 8), AND 1- \*8 EG IN 1" PVC.
  - ⑥ UNSWITCHED LOWER RECEPTACLES.
  - ⑦ 3- \*8 (CIRCS 2 & 4), AND 1- \*8 EG IN 1" PVC.
  - ⑧ 3- \*10, AND 1- \*10 EG IN 3/4" PVC.
  - ⑨ SYSTEM CONTROL PANEL. SEE SPECIFICATIONS, THIS SHEET.