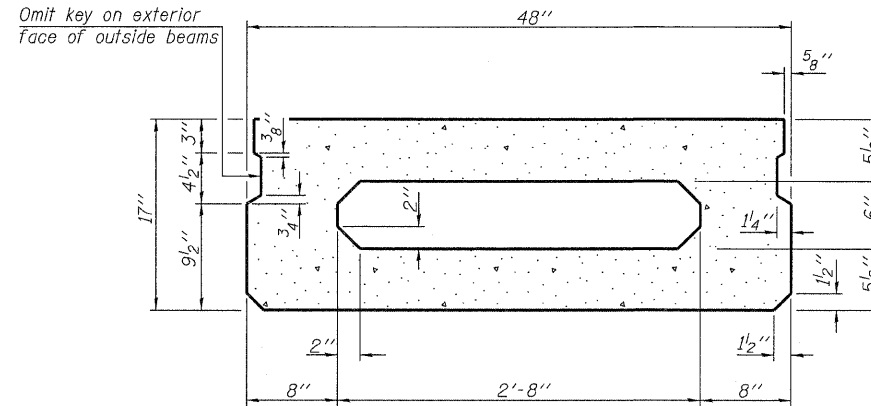
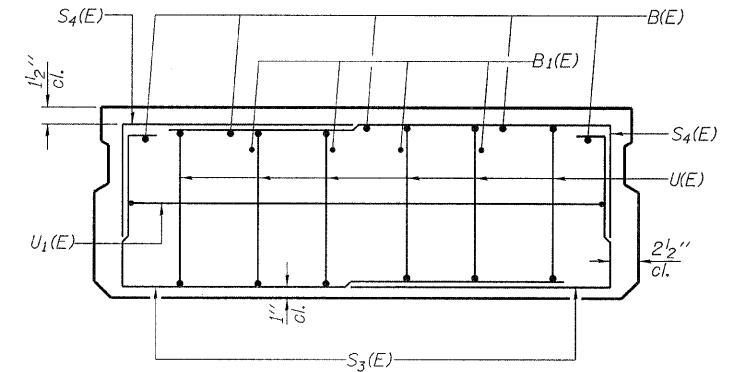


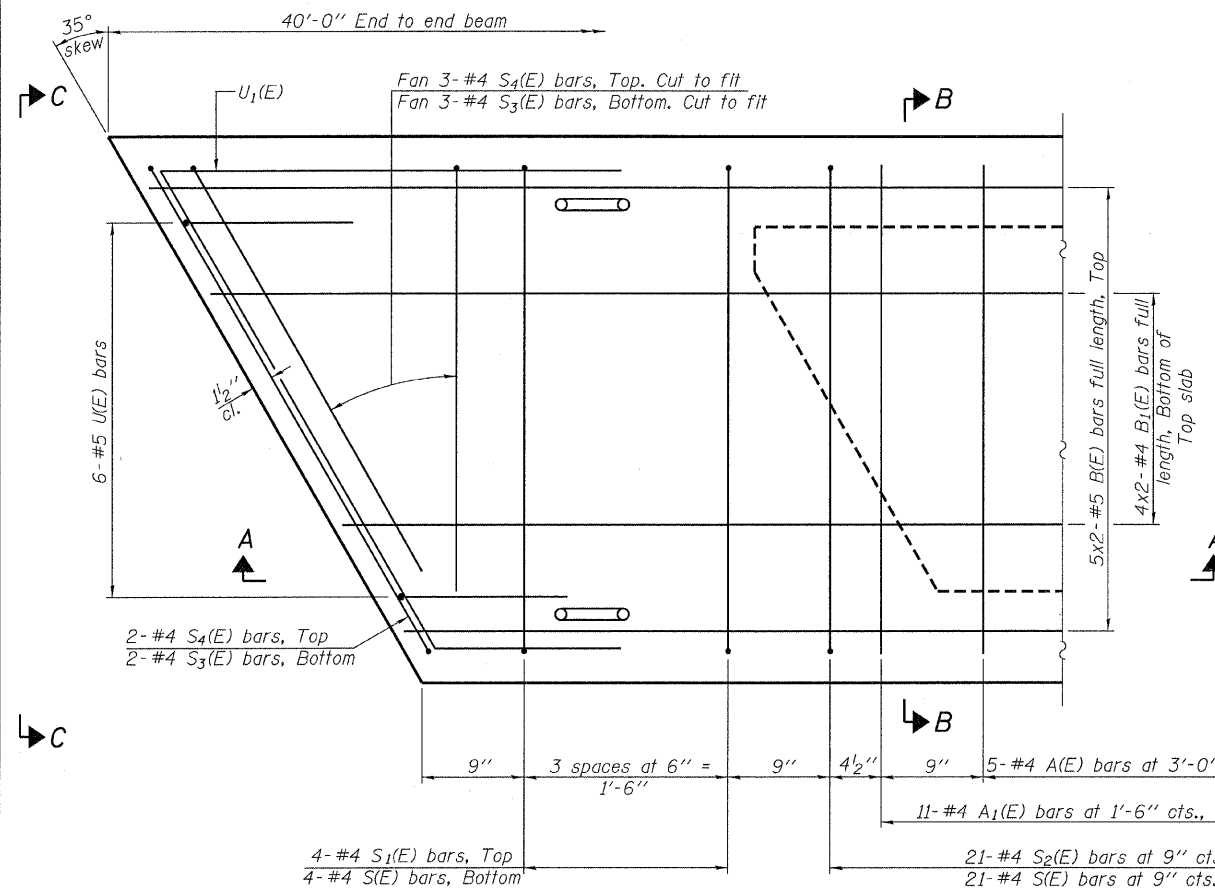
SECTION A-A



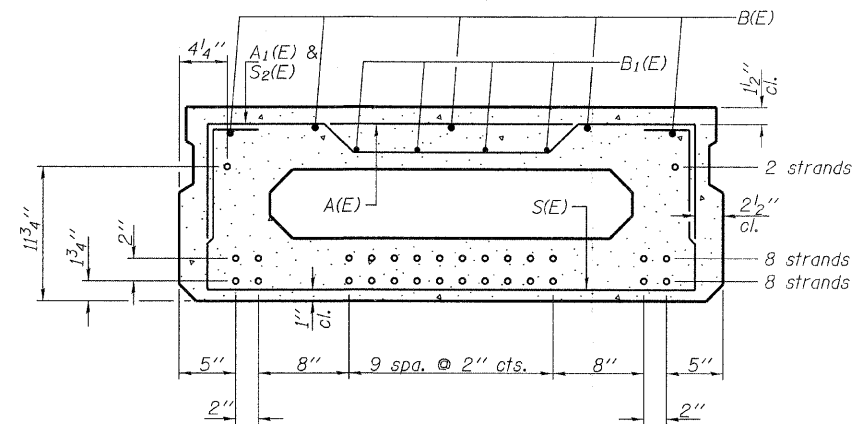
SECTION B-B
(Showing dimensions)



VIEW C-C



PLAN VIEW



SECTION B-B

(Showing reinforcement and permissible strand locations)

Note: Place the number of strands specified in each row symmetrically about the centerline of beam in the permissible strand locations shown.

BAR LIST
ONE BEAM ONLY
(For information only)

Bar	No.	Size	Length	Shape
A(E)	11	#4	3'-7"	—
A1(E)	22	#4	3'-10"	—
B(E)	10	#5	21'-1"	—
B1(E)	8	#4	20'-10"	—
S(E)	51	#4	6'-9"	U
S1(E)	8	#4	5'-3"	U
S2(E)	43	#4	5'-6"	U
S3(E)	10	#4	4'-8"	U
S4(E)	10	#4	3'-11"	U
U(E)	12	#5	3'-8"	U
U1(E)	2	#4	9'-3"	U

Note: See sheet 3 & 6 of 11 for additional details and Bill of Material.

Notes:
Spacing of S(E) and S2(E) bars may be adjusted up to 4" in the immediate area of the transverse tie diaphragms to miss the block outs for the transverse ties.
Bars indicated thus 5x2-#5 etc. indicates 5 lines of bars with 2 lengths per line.

MINIMUM BAR LAP

#4 bar = 2'-0"
#5 bar = 2'-6"

PD-1748-R 7-1-10

FILE NAME = 100230-sh-t-bridge.dgn	USER NAME =	DESIGNED - J.W.F.	REVISED -	STATE OF ILLINOIS JEFFERSON COUNTY HIGHWAY DEPARTMENT	17" x 48" PPC DECK BEAM - SPAN 1 & 3 STRUCTURE NO. 041-3750	T.R.	SECTION	COUNTY	TOTAL SHEETS	SHEET NO.
HAMPTON, LENZINI AND RENWICK, INC. 2008 STEVENSON DRIVE, SUITE 201 SPRINGFIELD, ILLINOIS 62703	PLLOT SCALE =	CHECKED - S.W.M.	REVISED -			364	10-04106-00-BR	JEFFERSON	27	18
ILLINOIS PROFESSIONAL DESIGN FIRM LS / PE / SE CORP. 184-00069	PLLOT DATE = 3/1/2012	DRAWN - D.T.M.	REVISED -			DODDS ROAD DISTRICT		CONTRACT NO. 99472		
		CHECKED - S.W.M.	REVISED -			ILLINOIS		FED. AID PROJECT BR05-00810671		