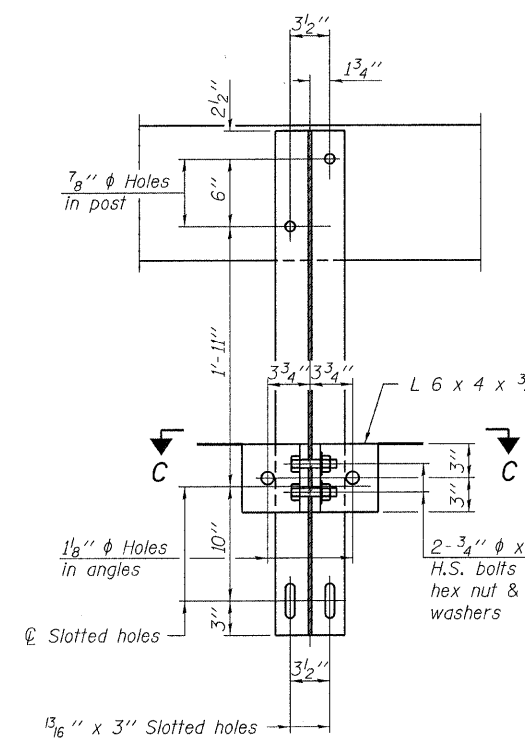
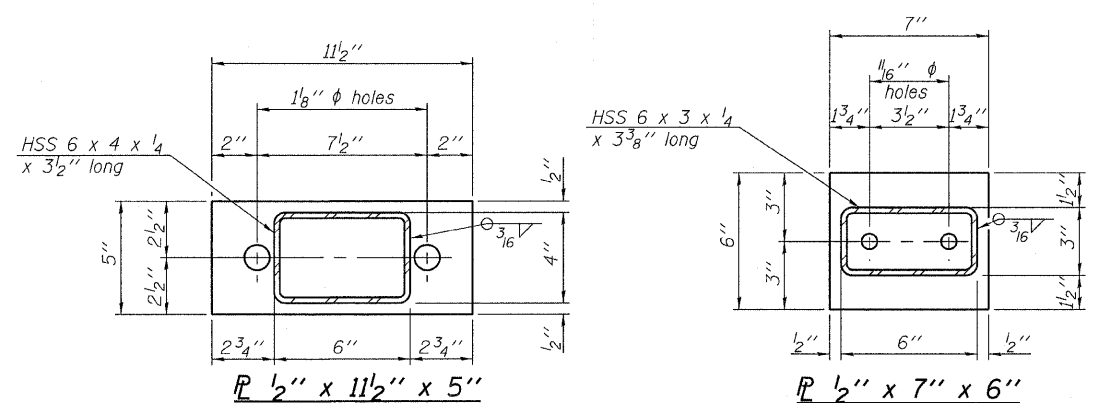
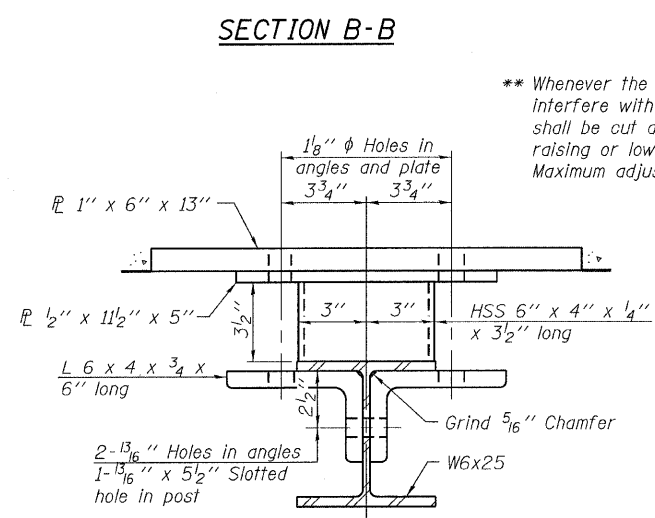


VIEW A-A
ROUND HEAD BOLT

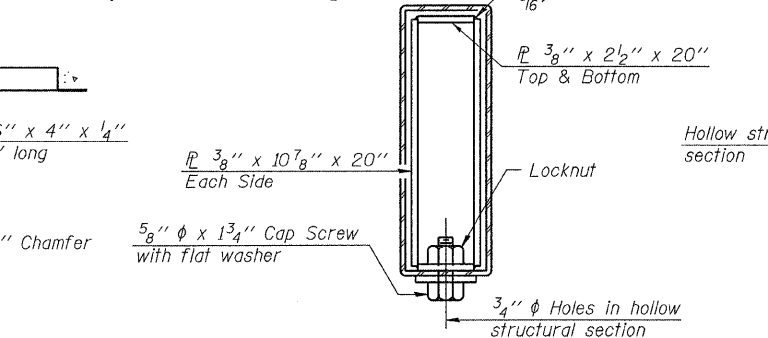


SECTION B-B

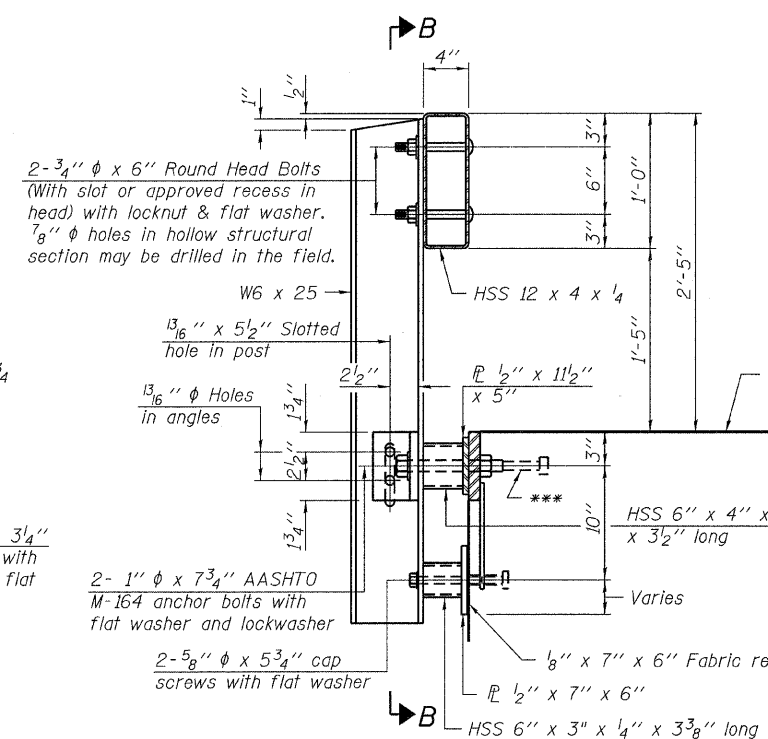


SECTION C-C

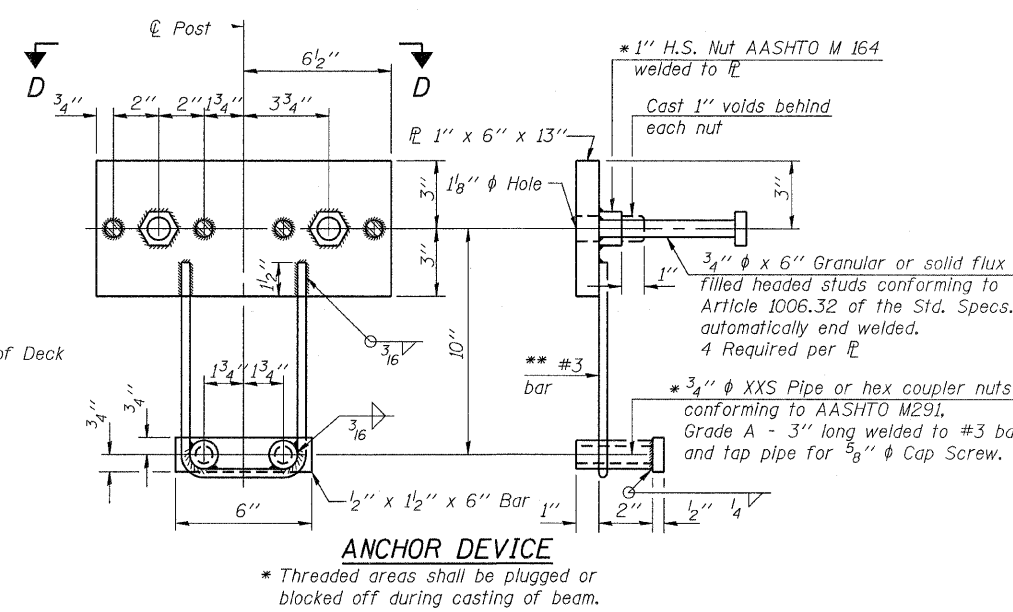
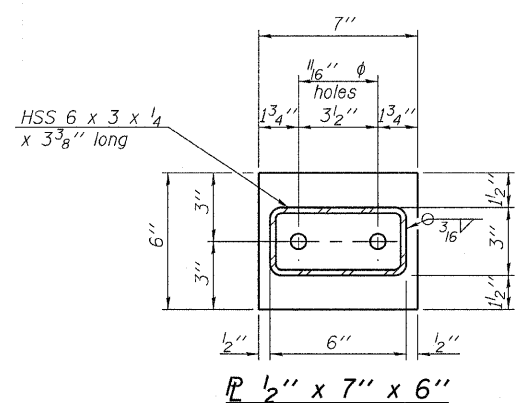
** Whenever the lower insert assemblies interfere with strand locations, the #3 bars shall be cut and adjusted in order to allow raising or lowering of the lower inserts. Maximum adjustment not to exceed 1/2".



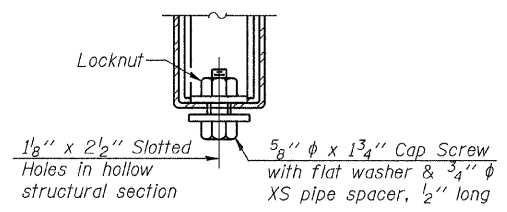
SECTIONS AT RAIL SPLICE



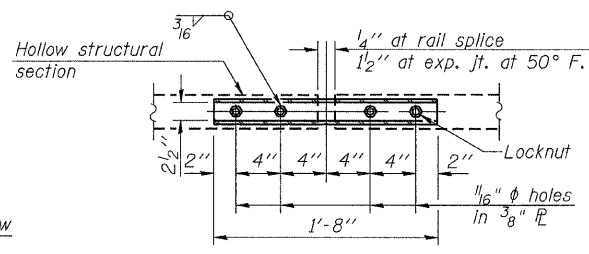
SECTION AT RAILING POST



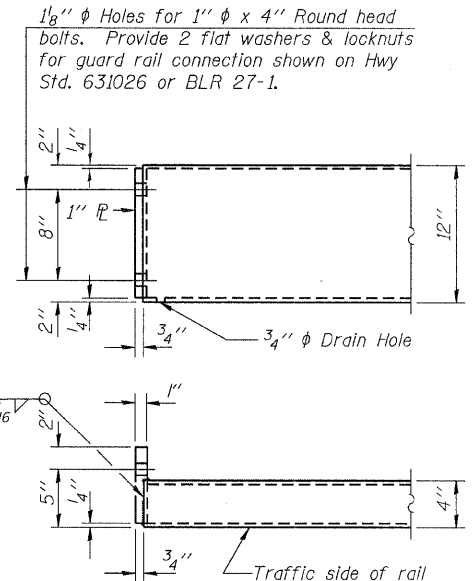
ANCHOR DEVICE



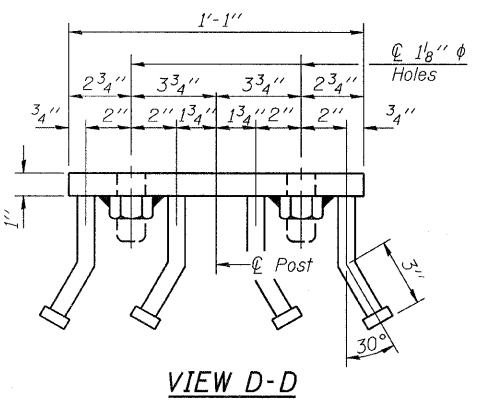
RAIL SPLICE CONNECTION AT EXPANSION JT.



PLAN-BOTT. SPLICE TYPICAL



END OF RAIL DETAILS



VIEW D-D

BILL OF MATERIAL

Item	Unit	Quantity
Steel Railing, Type S-1	Foot	260

T.R.	SECTION	COUNTY	TOTAL SHEETS	SHEET NO.
364	10-04106-00-BR	JEFFERSON	27	23
DODDS ROAD DISTRICT				CONTRACT NO. 99472

R-23A 7-1-10 (10'-9" Maximum Post Spacing)

FILE NAME = 180238-sh1-bridge.dgn	USER NAME =	DESIGNED - J.W.F.	REVISED -
HAMPTON, LENZINI AND RENWICK, INC. 5300 STEVENSON DRIVE, SUITE 201 SPRINGFIELD, ILLINOIS 62763	PLOT SCALE =	CHECKED - S.W.M.	REVISED -
ILLINOIS PROFESSIONAL DESIGN FIRM L.S.J. P.E./S.E. CORP. 184-000968	PLOT DATE = 3/1/2012	DRAWN - D.T.M.	REVISED -
		CHECKED - S.W.M.	REVISED -

STATE OF ILLINOIS
JEFFERSON COUNTY HIGHWAY DEPARTMENT

STEEL RAILING, TYPE S-1
STRUCTURE NO. 041-3750
SHEET NO. 7 OF 11 SHEETS

ILLINOIS FED. AID PROJECT BROS-00810671