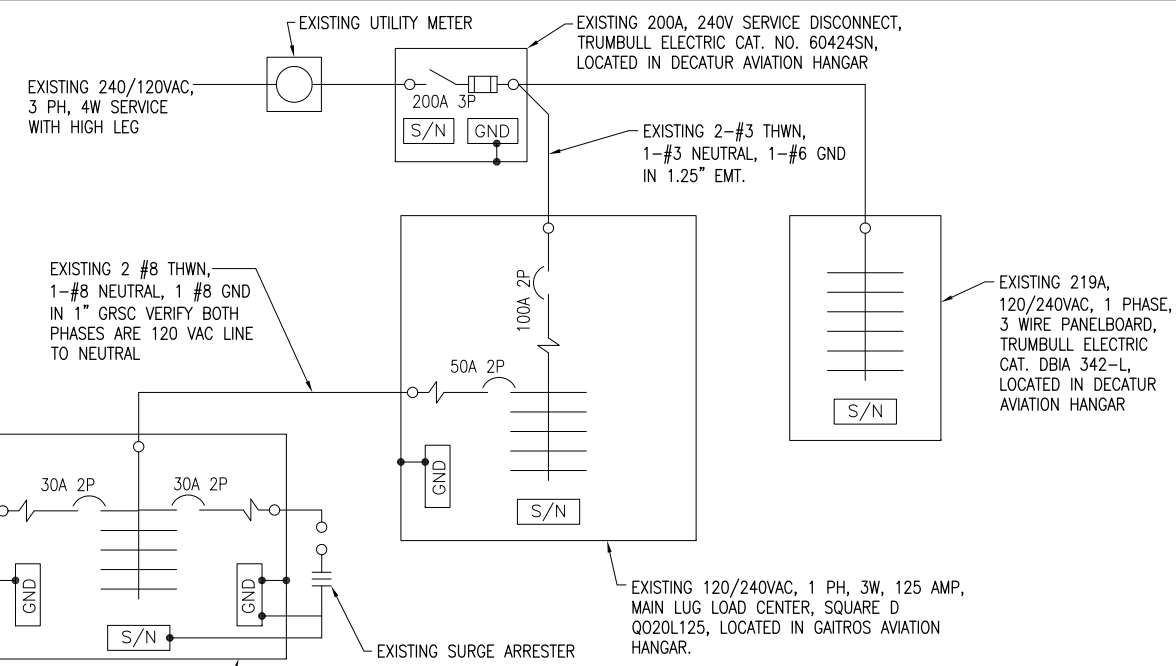
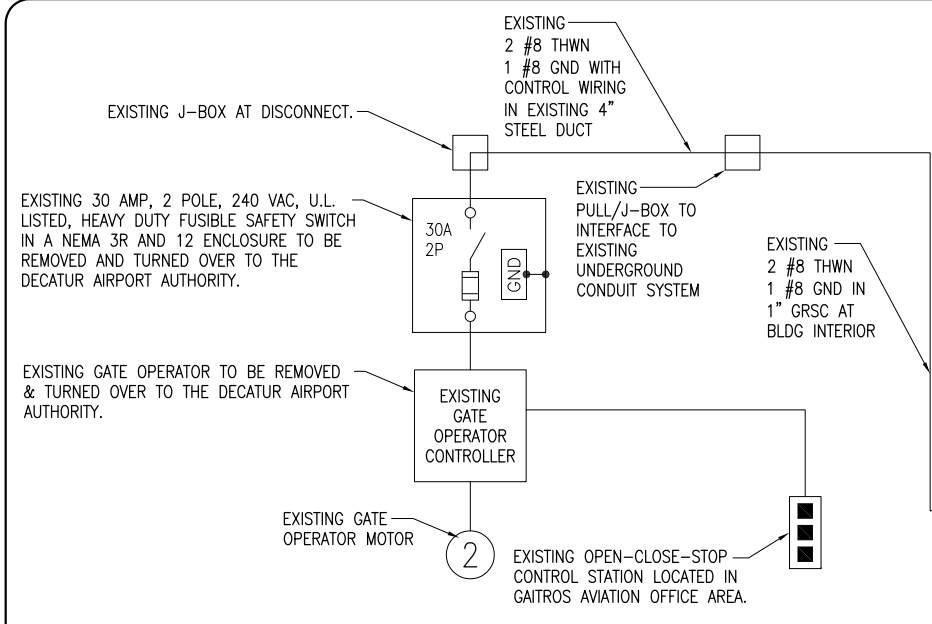


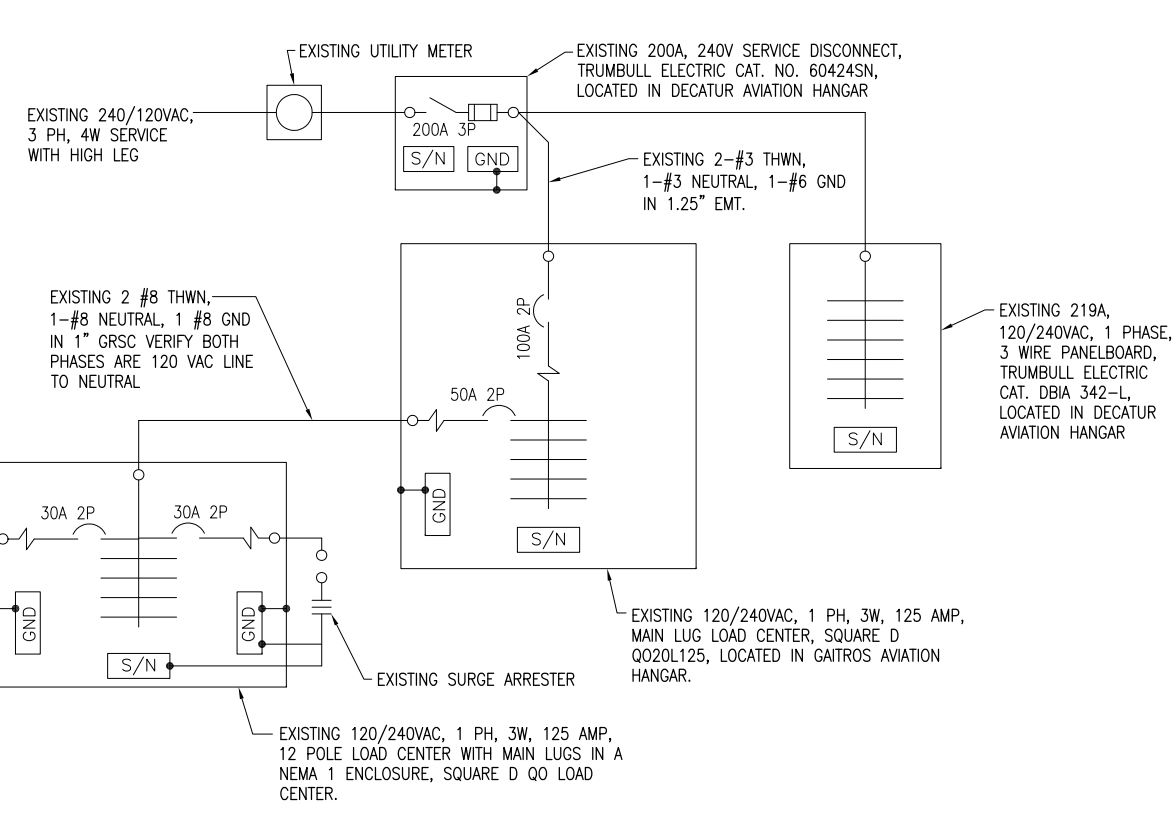
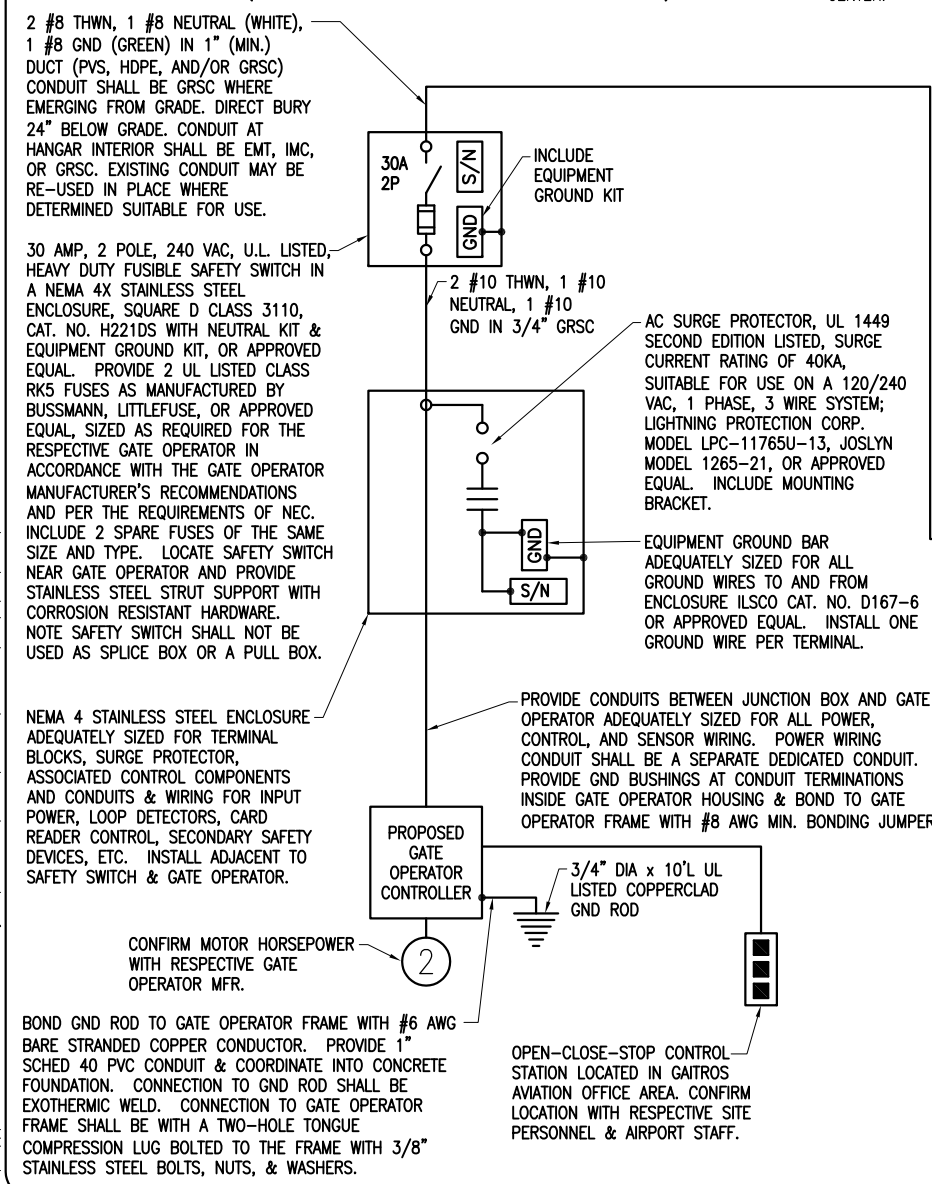
NOTES

- CONTRACTOR SHALL EXAMINE THE SITE TO DETERMINE EXISTING CONDITIONS.
- SEE "ELECTRICAL LEGEND AND ABBREVIATIONS" SHEET FOR GENERAL NOTES AND REQUIREMENTS.
- ALL ELECTRICAL EQUIPMENT SHALL BE INSTALLED IN CONFORMANCE WITH NFPA 70-NATIONAL ELECTRICAL CODE (NEC) MOST CURRENT ISSUE IN FORCE, THE RESPECTIVE EQUIPMENT MANUFACTURER'S DIRECTIONS AND ALL OTHER APPLICABLE LOCAL CODES, LAWS, ORDINANCES AND REQUIREMENTS IN FORCE. ANY INSTALLATIONS WHICH VOID THE U.L. LISTING, ETL LISTING, (OR OTHER THIRD PARTY LISTING) AND/OR THE MANUFACTURER'S WARRANTY OF A DEVICE WILL NOT BE PERMITTED.
- ALL EQUIPMENT SHOWN NOT LABELED AS EXISTING IS NEW.
- ALL FIXED WIRING IN THE RESPECTIVE HANGAR SHALL BE IN METAL RACEWAYS TO COMPLY WITH THE REQUIREMENTS OF NEC 513.7.
- ALL CONTROL POWER TRANSFORMERS, POWER SUPPLIES, SIMPLEX RECEPTACLES, LOOP DETECTOR AMPLIFIERS, SECONDARY SAFETY DEVICE EQUIPMENT, AND ANY OTHER ASSOCIATED CONTROLS SHALL BE INSTALLED EITHER INSIDE THE GATE OPERATOR CONTROL PANEL OR INSIDE A SEPARATE NEMA 4 STAINLESS STEEL CONTROL PANEL ENCLOSURE. WHERE THE CONTROL EQUIPMENT IS TO BE INSTALLED INSIDE THE GATE OPERATOR CONTROL PANEL THE CONTRACTOR SHALL COORDINATE THIS WITH THE GATE OPERATOR MANUFACTURER AND THE RESPECTIVE GATE OPERATOR EQUIPMENT SUPPLIER. LOCATING THESE CONTROLS OUTSIDE OF GATE OPERATOR CONTROL PANEL BUT WITHIN THE GATE OPERATOR HOUSING WILL NOT MEET THIS REQUIREMENT.
- REMOVAL OF EACH EXISTING ELECTRIC SLIDE GATE WILL BE PAID FOR UNDER ITEM AR162908 - REMOVE ELECTRIC GATE.
- PROPOSED 12 FT. ELECTRIC SLIDE GATE AND ASSOCIATED WORK SHOWN ON THIS SHEET WILL BE PAID FOR UNDER ITEM AR162712 ELECTRIC GATE - 12'.
- PER NEC 513 THE ENTIRE AREA OF A HANGAR INCLUDING ANY ADJACENT AND COMMUNICATING AREAS NOT SUITABLY CUT OFF FROM THE HANGAR, SHALL BE CLASSIFIED AS A CLASS I, DIVISION 2 HAZARDOUS LOCATION UP TO A LEVEL 18 INCHES ABOVE FLOOR, PER NEC 513.3(C) "VICINITY OF AIRCRAFT", THE AREAS WITHIN 5 FT. HORIZONTALLY FROM AIRCRAFT POWER PLANTS OR AIRCRAFT FUEL TANKS SHALL BE CLASSIFIED AS A CLASS I, DIVISION 2 LOCATION THAT SHALL EXTEND UPWARD FROM THE FLOOR TO A LEVEL 5FT. ABOVE THE UPPER SURFACE OF WINGS AND OF ENGINE ENCLOSURE. ALL ELECTRICAL INSTALLATIONS IN CLASSIFIED HAZARDOUS LOCATIONS SHALL BE AVOIDED UNLESS SPECIFICALLY APPROVED FOR SUCH LOCATIONS AND INSTALLED IN CONFORMANCE WITH NEC 500, 501, AND 513 AS WELL AS A OTHER APPLICABLE CODES AND REQUIREMENTS.
- GATE OPERATORS SHALL BE RATED FOR THE RESPECTIVE VOLTAGE AVAILABLE AT THE SITE AND SHALL PROPERLY OPERATE ON THE RESPECTIVE NOMINAL VOLTAGE SYSTEM PLUS OR MINUS 10 PERCENT. CONTRACTOR SHALL CONFIRM WITH THE GATE OPERATOR MANUFACTURER THAT THE RESPECTIVE GATE OPERATOR HE SELECTS IS RATED SUITABLE FOR THE RESPECTIVE APPLICATION, IS SUITABLE AND COMPATIBLE WITH THE RESPECTIVE GATE, AND WILL OPERATE PROPERLY ON THE RESPECTIVE POWER SUPPLY. NOTE THE GATE OPERATOR MUST ALSO OPERATE PROPERLY ON STANDBY ENGINE GENERATOR POWER AND SHALL NOT REQUIRE MANUAL RESET DUE TO TRANSFER FROM UTILITY POWER TO STANDBY GENERATOR POWER OR BACK TO UTILITY POWER. THE GATE OPERATOR MUST NOT REQUIRE MANUAL RESET FOR MOMENTARY POWER OUTAGES. WHERE A POWER OUTAGE OCCURS THE GATE OPERATOR SHALL AUTOMATICALLY RESUME NORMAL OPERATION UPON RESTORATION OF POWER.

EXISTING ELECTRICAL ONE-LINE DIAGRAM FOR GATE #3 OPERATOR (AT GAITROS AVIATION & ATCT)



PROPOSED ELECTRICAL ONE-LINE DIAGRAM FOR GATE #3 OPERATOR (AT GAITROS AVIATION & ATCT)



MAY 08, 2012 1:29 PM HARR01115 p:\sps-sv306\hanson\dom\hanson\Projects\Documents\110083\110083D\CAD\Airport\Sheet\E-603-elec

REVISION	
DATE	
DECATUR AIRPORT	
DECATUR, ILLINOIS	
A.I.P. PROJ.: 3-17-0033-B4	

Hanson Proj. No. 11A0083D	Filename E-603.dwg	Scale NOT TO SCALE	Date 05/08/2012
LAYOUT	KNL	03/02/12	
DRAWN	BAK	03/02/12	
REVIEWED	KNL/RAW	04/19/12	

HANSON
 © Copyright Hanson Professional Services Inc. 2012
Hanson Professional Services Inc.
 1525 South Sixth Street
 Springfield, Illinois 62703-2886
 Ph: (217) 788-2450 Fax: (217) 788-2503
 www.hanson-inc.com
 Offices Nationwide

REPLACE PERIMETER FENCE
 GATE 3 ELECTRICAL ONE-LINES