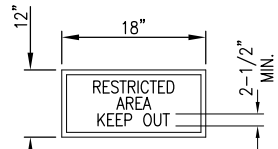
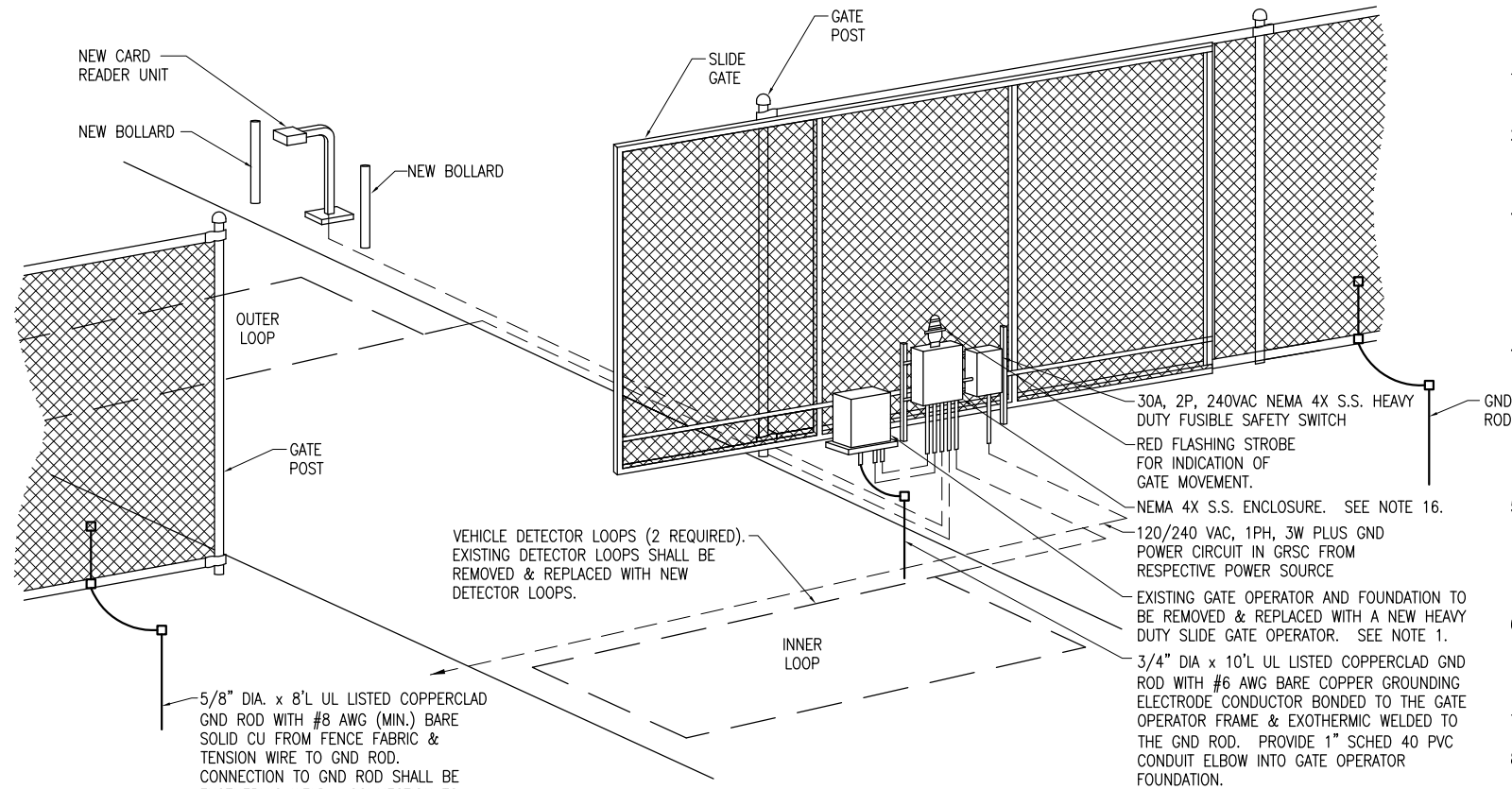


VEHICLE DETECTOR LOOPS		
GATE SIZE	LOOP SIZE	NO. OF TURNS
8' TO 12'	4' X 6'	3 TURNS
12' TO 16'	4' X 10'	2 TURNS
16' TO 20'	4' X 14'	2 TURNS
20' TO 24'	4' X 18'	2 TURNS
24' TO 30'	6' X 22'	2 TURNS
30' TO 34'	6' X 26'	2 TURNS

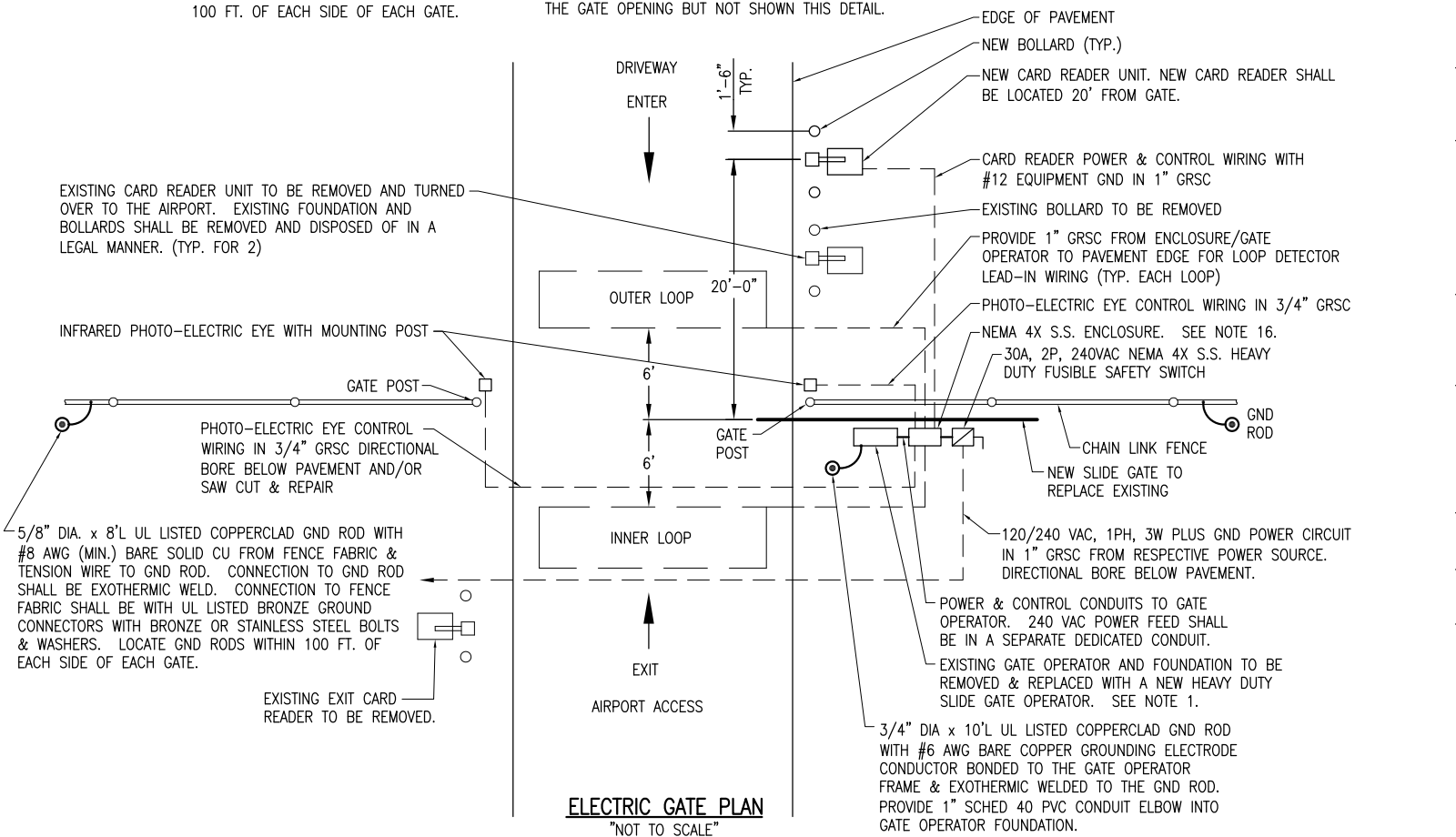


- NOTES:**
- 0.08 GA. ALUMINUM ALLOY SHEET LETTERING COLOR SHALL BE RED. EACH GATE SHALL REQUIRE ONE SIGN. EVERY 100' OF FENCE SHALL REQUIRE ONE SIGN.
 - RELOCATE SIGNS ON EXISTING GATE TO NEW GATE.



ELECTRIC GATE DETAIL (ISOMETRIC)
"NOT TO SCALE"

NOTE: PHOTO-ELECTRIC EYES ARE REQUIRED FOR THE GATE OPENING BUT NOT SHOWN THIS DETAIL.



ELECTRIC GATE PLAN
"NOT TO SCALE"

NOTES:

- SEE SPECIAL PROVISION SPECS FOR REQUIREMENTS ON RESPECTIVE GATE & GATE OPERATOR SYSTEM.
- ALL DIMENSIONS AND LAYOUT INFORMATION SHOWN SHOULD BE ADJUSTED AS RECOMMENDED BY THE MANUFACTURER. SEE RESPECTIVE SITE PLAN FOR EACH GATE.
- CONCRETE FOUNDATIONS SHALL BE PROVIDED FOR THE SLIDE GATE OPERATOR AND THE CARD READER CONTROL UNIT. FOUNDATION FOR THE GATE OPERATOR SHALL BE 48" (MIN.) IN DEPTH AND OF THE SIZE RECOMMENDED BY THE MANUFACTURER. FOUNDATION FOR THE CARD READER ACCESS CONTROL UNIT SHALL EXTEND APPROX. 24" ABOVE GRADE TO ACCOMMODATE SNOW FALL. SEE DETAILS.
- 1" GRSC CONDUIT WILL BE REQUIRED BETWEEN THE SLIDE GATE OPERATOR INSTALLATION AND THE CARD READER ACCESS CONTROL UNIT, THE PHOTO-ELECTRIC EYES, AND THE DETECTOR LOOPS. THE MINIMUM BURYING DEPTH IS 24". ALL METAL CONDUITS ENTERING THE GATE OPERATOR SHALL BE BONDED TO THE GATE OPERATOR FRAME WITH A #8 AWG (MIN.) COPPER BONDING JUMPER. CONFIRM CONTROL WIRING REQUIREMENTS WITH THE RESPECTIVE GATE OPERATOR SALES AND SERVICE REPRESENTATIVE.
- THE GUARD/BOLLARD POSTS SHALL BE 6.625" DIA. STEEL (HEAVY WALL) PIPE, CONCRETE FILLED, AND SHALL EXTEND FROM THE TOP OF THE CARD CONTROL UNIT TO A DEPTH OF 48" BELOW THE GROUND LINE. THE CONCRETE FOOTER DIMENSION SHALL BE AS DETAILED HEREIN. GUARD/BOLLARD POSTS SHALL BE PAINTED WITH YELLOW COLORED ENAMEL FINISH.
- THE SLIDING GATE SHALL BE CANTILEVER TYPE OF THE SIZE CALLED FOR ON THE PLANS, SHALL HAVE AN ENCLOSED ROLLER ASSEMBLY WHICH IS PROTECTED FROM FREEZING RAIN AND SNOW, AND SHALL BE AS MANUFACTURED BY TYMETAL CORPORATION OR APPROVED EQUAL.
- (RESERVED).
- CONTRACTOR SHALL COORDINATE ANY POWER OUTAGES TO EXISTING EQUIPMENT WITH THE RESPECTIVE OWNER'S REPRESENTATIVE AND THE AIRPORT DIRECTOR.
- INCLUDE AC SURGE PROTECTOR FOR THE GATE OPERATOR, UL 1449 LISTED, SURGE CURRENT RATING OF 40KA, SUITABLE FOR USE ON A 120/240 VAC, 1 PHASE, 3 WIRE SYSTEM WITH LED INDICATING OPERATIONAL STATUS, JOSLYN MODEL 1265-21, SQUARE D CAT. NO. TVS120XR50S OR APPROVED EQUAL. INCLUDE MOUNTING BRACKET.
- CONCRETE USED FOR INSTALLING THE GATE OPERATOR, CARD READER, & FENCE SHALL MEET THE REQUIREMENTS OF STRUCTURAL PORTLAND CEMENT CONCRETE ITEM 610.
- ALL ELECTRICAL EQUIPMENT SHALL BE INSTALLED IN CONFORMANCE WITH NFPA 70 - NATIONAL ELECTRICAL CODE (NEC) MOST CURRENT ISSUE IN FORCE, THE RESPECTIVE EQUIPMENT MANUFACTURER'S DIRECTIONS AND ALL OTHER APPLICABLE LOCAL CODES, LAWS, ORDINANCES, AND REQUIREMENTS IN FORCE. ANY INSTALLATIONS WHICH VOID THE UL LISTING, ETL LISTING, (OR OTHER THIRD PARTY LISTING) AND/OR THE MANUFACTURER'S WARRANTY OF A DEVICE WILL NOT BE PERMITTED.
- PROVIDE A WEATHERPROOF ENGRAVED PHENOLIC OR PLASTIC LEGEND PLATE FOR THE SAFETY SWITCH AT THE RESPECTIVE GATE OPERATOR NOTING THE GATE SERVED, VOLTAGE, AND RESPECTIVE POWER SOURCE CIRCUIT AND LOCATION.
- PAYMENT FOR EACH SLIDE GATE, CARD READER, GATE OPERATOR, AND ALL ASSOCIATED CONTROL & SAFETY DEVICES SHALL BE ON A LUMP SUM BASIS AND SHALL BE FULL COMPENSATION FOR ALL MATERIALS, EQUIPMENT, CABLE IN CONDUIT, DUCT, OR UNIT DUCT, GROUNDING, LABOR, TOOLS, COORDINATION, TESTING, AND INCIDENTALS REQUIRED TO INSTALL THE GATE COMPLETE AND IN OPERATING CONDITION.
- CONTROL CIRCUIT WIRING SHALL NOT BE ROUTED THROUGH THE SAFETY SWITCH/DISCONNECT.
- INCLUDE CORROSION RESISTANT SUPPORT POSTS AND HARDWARE WITH THE PHOTO-ELECTRIC EYE SAFETY DEVICES.
- ALL CONTROL POWER TRANSFORMERS, SURGE PROTECTORS, POWER SUPPLIES, RECEPTACLES, LOOP DETECTOR AMPLIFIERS, SECONDARY SAFETY DEVICE EQUIPMENT, AND ANY OTHER ASSOCIATED CONTROLS SHALL BE INSTALLED EITHER INSIDE THE GATE OPERATOR CONTROL PANEL OR INSIDE A SEPARATE NEMA 4 STAINLESS STEEL CONTROL PANEL ENCLOSURE. WHERE THE CONTROL EQUIPMENT IS TO BE INSTALLED INSIDE THE GATE OPERATOR CONTROL PANEL THE CONTRACTOR SHALL COORDINATE THIS WITH THE GATE OPERATOR MANUFACTURER AND THE RESPECTIVE GATE OPERATOR EQUIPMENT SUPPLIER. LOCATING THESE CONTROLS OUTSIDE OF GATE OPERATOR CONTROL PANEL BUT WITHIN THE GATE OPERATOR HOUSING WILL NOT MEET THIS REQUIREMENT.

REVISION	DATE

DECATUR, ILLINOIS

IL PROJ.: DEC-4167

Hanson Proj. No. 11A0083D	File Name E-507.DWG	Scale NOT TO SCALE	Date 05/08/2012
LAYOUT	KNL	BAK	04/14/12
DRAWN	KNL/RAW	BAK	04/16/02
REVIEWED	KNL/RAW	BAK	04/19/12

HANSON

© Copyright Hanson Professional Services Inc. 2012
Hanson Professional Services Inc.
 1525 South Sixth Street
 Springfield, Illinois 62703-2886
 Ph: (217) 788-2450 Fax: (217) 788-2503
 www.hanson-inc.com
 Offices Nationwide

REPLACE PERIMETER FENCE

PROPOSED ELECTRIC SLIDE GATE DETAILS - GATE 5

MAY 08, 2012 1:30 PM HARR01115
 pw:\sps-svr306\hanson\Projects\Documents\11A0083D\11A0083D\CAD\Airport\Sheet\E-507