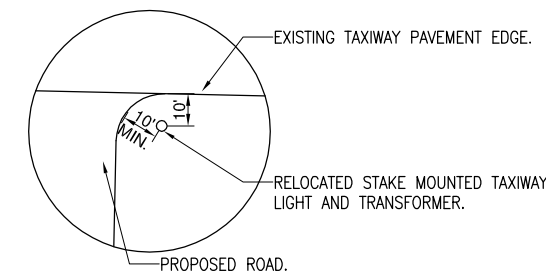
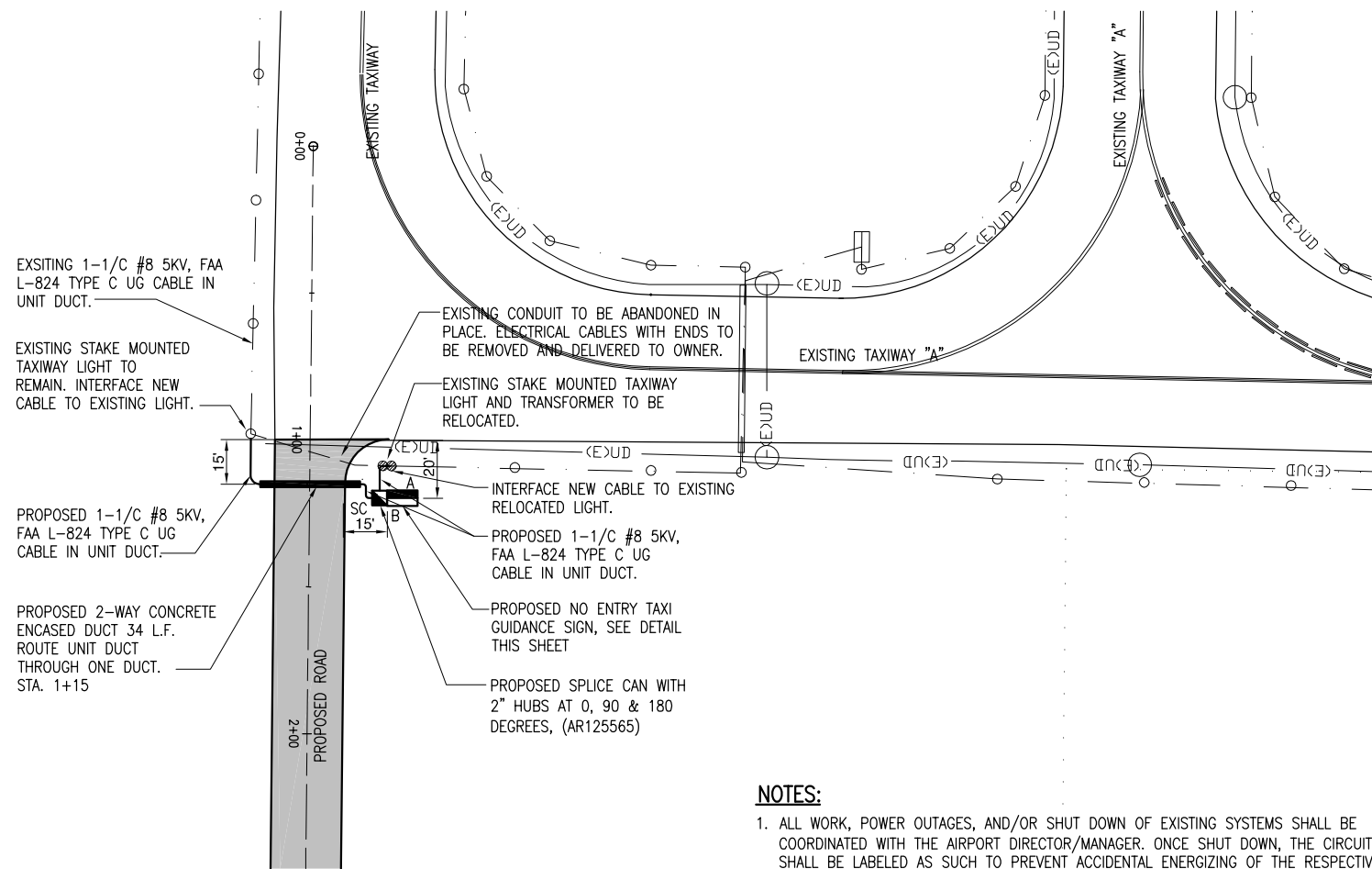
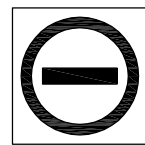


MAY 04, 2012 7:19 AM SCHUB01446  
 C:\AIRPORTS\SIA-CARBONDALE\11A0037\AIRPORT\SHEET\R-012ELPLAN.DWG - SIGNAGE & ELECTRICAL PLAN



TAXIWAY LIGHT RELOCATION



DETAIL - NO ENTRY TAXI GUIDANCE SIGN DETAIL

SCALE: NONE

TAXI GUIDANCE SIGN NOTES:

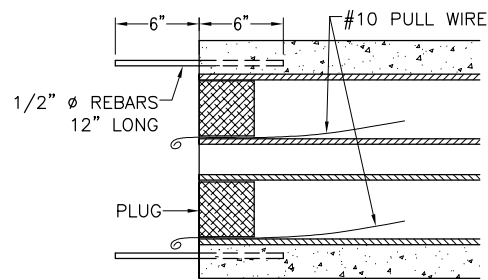
1. THE PROPOSED "NO ENTRY" GUIDANCE SIGN SHALL CONFORM TO ADVISORY CIRCULAR 150/5345 44J (OR LATEST ISSUE IN FORCE) AND BE FAA-APPROVED FOR TYPE L-858R MANDATORY INSTRUCTION SIGN (BLACK OUTLINE ON OUTSIDE EDGE OF WHITE LEGEND ON RED BACKGROUND); THE SIGN SHALL BE SIZE 1, 18-IN. SIGN FACE WITH A 12-IN. LEGEND; STYLE 3, POWERED FROM A 2.8 TO 6.6 AMP SERIES LIGHTING CIRCUIT; CLASS 2, FOR OPERATION FROM -40 DEGREES F TO 131 DEGREES F; MODE 2, TO WITHSTAND WIND LOADS OF 200 M.P.H., BASE-MOUNTED, DOUBLE-SIDED, AS SPECIFIED ON PLANS.

NOTES:

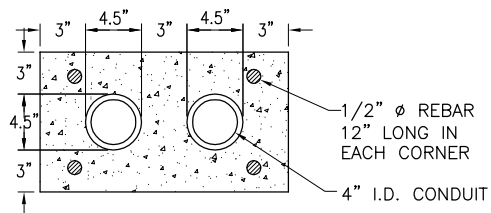
1. ALL WORK, POWER OUTAGES, AND/OR SHUT DOWN OF EXISTING SYSTEMS SHALL BE COORDINATED WITH THE AIRPORT DIRECTOR/MANAGER. ONCE SHUT DOWN, THE CIRCUITS SHALL BE LABELED AS SUCH TO PREVENT ACCIDENTAL ENERGIZING OF THE RESPECTIVE CIRCUITS. ALL PERSONNEL SHALL FOLLOW U.S. DEPARTMENT OF LABOR OCCUPATIONAL SAFETY & HEALTH ADMINISTRATION (OSHA) 29 CFR PART 1910 OCCUPATIONAL SAFETY & HEALTH STANDARDS FOR ELECTRICAL SAFETY AND LOCKOUT/TAGOUT PROCEDURES INCLUDING, BUT NOT LIMITED TO, 29 CFR SECTION 1910.147 THE CONTROL OF HAZARDOUS ENERGY (LOCKOUT/TAGOUT).
2. CONTRACTOR SHALL FIELD VERIFY EXISTING SITE CONDITIONS.
3. PROPOSED GUIDANCE SIGN SHALL BE CONSTRUCTED AT THE LOCATION SHOWN ON THE PROPOSED AIRFIELD ELECTRICAL & SIGNAGE PLANS AND IN ACCORDANCE WITH THE DETAILS AND SPECIFICATIONS.
4. WHERE TEMPORARY WIRING IS REQUIRED, ALL ABOVE GROUND JUMPERS SHALL BE IN A DUCT WITH ALL CONNECTIONS SEALED. THE CONTRACTOR SHALL SECURE, IDENTIFY AND PLACE ALL TEMPORARY EXPOSED WIRING IN CONDUIT, DUCT OR UNIT DUCT TO PREVENT ELECTROCUTION AND FIRE IGNITION SOURCES AS PER THE REQUIREMENTS OF FAA 150/5370-2E, - OPERATIONAL SAFETY ON AIRPORTS DURING CONSTRUCTION, PART 3-6, C.
5. NO CONNECTION TO AN ACTIVE LIGHTING CIRCUIT WILL BE BROKEN UNTIL THE CIRCUIT HAS BEEN TURNED OFF IN ACCORDANCE WITH NOTE 1.

LEGEND

- EXISTING PAVEMENT
- EXISTING ELECTRICAL CONDUIT TO BE ABANDONED IN PLACE
- EXISTING 1/2 #8 5KV, L-824 TYPE C UG CABLE IN 2" HDPE DUCT
- EXISTING UNDER DRAIN LOCATE AND AVOID.
- EXISTING TAXI GUIDANCE SIGN
- PROPOSED TAXI GUIDANCE SIGN
- PROPOSED ELECTRICAL DUCT
- PROPOSED 1/2 #8 5KV, L-824 TYPE C UG CABLE IN UNIT DUCT
- PROPOSED L-867 SPLICE CAN
- EXISTING TAXIWAY LIGHT
- RELOCATED TAXIWAY LIGHT



TYPICAL SECTION (NOT TO SCALE)



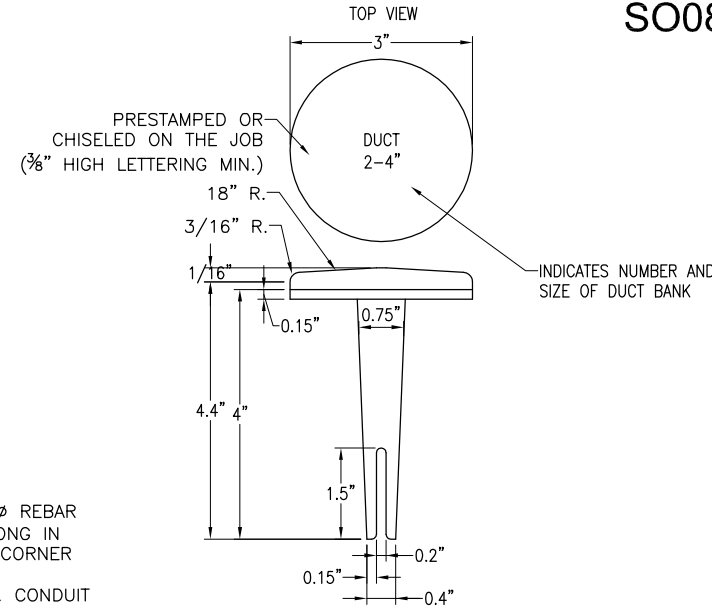
2-DUCT BANK (NOT TO SCALE)

DUCT BANK NOTES:

1. ALL DIMENSION ARE MINIMUM.
2. INCLUDE DUCT SPACERS AS MANUFACTURED BY UNDERGROUND DEVICES INC., TO MAINTAIN PROPER SEPARATION OF CONDUITS.
3. REBAR IS REQUIRED TO ACCOMMODATE FUTURE DUCT EXTENSIONS & INTERFACE AT DUCT BANK TERMINATIONS. DUCT BANKS TERMINATING IN MANHOLES DO NOT REQUIRE REBAR AT TERMINATIONS.
4. CONDUITS FOR CONCRETE ENCASED DUCT SHALL BE SCHEDULE 40 PVC CONFORMING TO ITEM 110.
5. MINIMUM DEPTH OF TOP OF DUCT ENCASEMENT SHALL BE 30" BELOW FINISHED GRADE.
6. HIGH VOLTAGE AND LOW VOLTAGE CIRCUITS SHALL NOT BE INSTALLED IN THE SAME RACEWAY, CONDUIT, DUCT, HANDHOLE, OR MANHOLE.
7. HOMERUN CABLES FOR A RESPECTIVE CIRCUIT SHALL BE INSTALLED IN THE SAME RACEWAY OR DUCT.

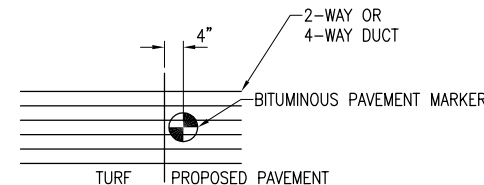
THE LOCATION, SIZE, AND TYPE OF MATERIAL OF EXISTING UNDERGROUND AND/OR ABOVEGROUND UTILITIES INDICATED ON THE PLANS ARE NOT REPRESENTED AS BEING ACCURATE, SUFFICIENT OR COMPLETE. NEITHER THE OWNER NOR THE ENGINEER ASSUMES ANY RESPONSIBILITY WHATEVER IN RESPECT TO THE ACCURACY, COMPLETENESS, OR SUFFICIENCY OF THE INFORMATION. THERE IS NO GUARANTEE, EITHER EXPRESSED OR IMPLIED, THAT THE LOCATIONS, SIZE AND TYPE OF MATERIAL OF EXISTING UNDERGROUND UTILITIES INDICATED ARE REPRESENTATIVE OF THOSE TO BE ENCOUNTERED IN THE CONSTRUCTION. IT SHALL BE THE CONTRACTOR'S RESPONSIBILITY TO DETERMINE THE ACTUAL LOCATION OF ALL SUCH FACILITIES, INCLUDING SERVICE CONNECTIONS TO UNDERGROUND UTILITIES. PRIOR TO CONSTRUCTION, THE CONTRACTOR SHALL NOTIFY THE UTILITY COMPANIES OF HIS OPERATIONAL PLANS AND SHALL OBTAIN FROM THE RESPECTIVE UTILITY COMPANIES DETAILED INFORMATION AND ASSISTANCE RELATIVE TO THE LOCATION OF THEIR FACILITIES AND THE WORKING SCHEDULE OF THE COMPANIES FOR REMOVAL OR ADJUSTMENT WHERE REQUIRED. IN THE EVENT AN UNEXPECTED UTILITY INTERFERENCE IS ENCOUNTERED DURING CONSTRUCTION, THE CONTRACTOR SHALL IMMEDIATELY NOTIFY THE UTILITY COMPANY OF JURISDICTION. THE OWNER'S REPRESENTATIVE AND/OR THE RESIDENT ENGINEER SHALL ALSO BE IMMEDIATELY NOTIFIED. ANY DAMAGE TO SUCH MAINS AND SERVICES SHALL BE RESTORED TO SERVICE AT ONCE AND PAID FOR BY THE CONTRACTOR AT NO ADDITIONAL COST TO THE CONTRACT.

ALL UTILITY CABLES AND LINES SHALL BE LOCATED BY THE RESPECTIVE UTILITY. CONTACT JULIE (JOINT UTILITY LOCATION INFORMATION FOR EXCAVATORS) FOR UTILITY INFORMATION, PHONE: 1-800-892-0123. CONTACT THE FAA (FEDERAL AVIATION ADMINISTRATION) FOR ASSISTANCE IN LOCATING FAA CABLES AND UTILITIES. LOCATION OF FAA POWER, CONTROL, AND COMMUNICATION CABLES SHALL BE COORDINATED WITH AND/OR LOCATED BY THE FAA. ALSO CONTACT AIRPORT DIRECTOR/MANAGER AND AIRPORT PERSONNEL FOR ASSISTANCE IN LOCATING UNDERGROUND AIRPORT CABLES AND/OR UTILITIES. ALSO COORDINATE WORK WITH ALL ABOVEGROUND UTILITIES.



BITUMINOUS PAVEMENT DUCT MARKERS (NOT TO SCALE)

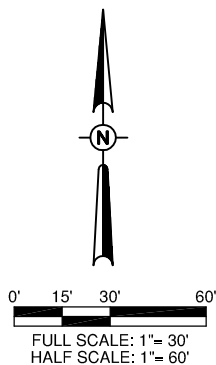
NOTE: TOP OF MARKER SHALL BE FLUSH WITH FINISHED PAVEMENT SURFACE. MARKER MAY BE INSTALLED IN A DRILLED HOLE AND SECURED WITH EPOXY GLUE.



DUCT MARKER DETAIL (NOT TO SCALE)

CABLE & DUCT MARKER NOTES:

1. THE COST OF ALL PAVEMENT DUCT MARKERS SHALL BE INCIDENTAL TO THE DUCT.
2. BITUMINOUS PAVEMENT DUCT MARKER PROVIDED AT EACH END OF EACH DUCT AS SHOWN ON THE LOCATION PLAN.



SO081

DATE	REVISION	BY

SOUTHERN ILLINOIS AIRPORT  
 MURPHYSBORO / CARBONDALE, ILLINOIS



IL PROJ.: MDH-4173

Hanson Project No. 11A0037D_0001	Filename R-012ELPLAN.DWG	Scale NOT TO SCALE	Date 04/20/2012
LAYOUT	JSL	03/21/2012	
DRAWN	CWS	03/21/2012	
REVIEWED	JSL	04/16/2012	



CONSTRUCT PERIMETER ROAD TO SUPPORT ARFF/SRE BUILDING

PROPOSED AIRFIELD ELECTRICAL, SIGNAGE & ELECTRICAL PLAN