

STATE OF ILLINOIS
DEPARTMENT OF TRANSPORTATION

F.A.P. RTE.	SECTION	COUNTY	TOTAL SHEETS	SHEET NO.
840	(140) SFY	KANKAKEE	6	1
		ILLINOIS	CONTRACT NO. 66H71	

INDEX OF SHEETS

- 1 COVER SHEET
- 2 GENERAL NOTES
- 3 SUMMARY OF QUANTITIES
- 4 TYPICAL SECTIONS
- 5 SCHEDULES
- 6 DETAILS

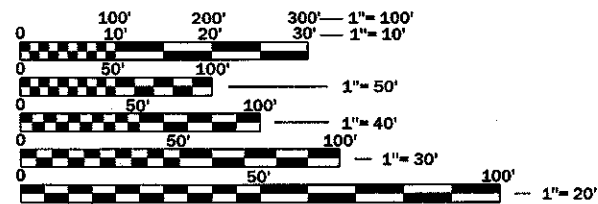
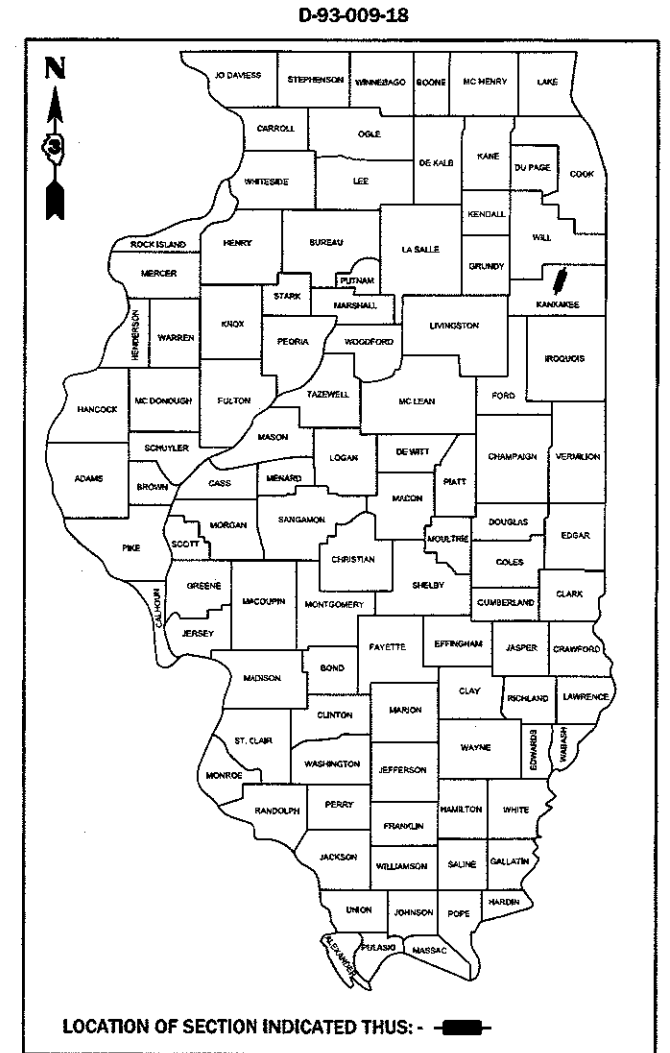
LIST OF ILLINOIS DOT HIGHWAY STANDARDS

- 000001-06 STANDARD SYMBOLS, ABBREVIATIONS AND PATTERNS
- 001006 DECIMAL OF AN INCH AND OF A FOOT
- 406201-01 MAILBOX TURNOUT
- 482001-02 HMA SHOULDER ADJACENT TO FLEXIBLE PAVEMENT
- 482006-03 HMA SHOULDER ADJACENT TO RIGID PAVEMENT
- 642006 SHOULDER RUMBLE STRIPS, 8 INCH
- 701101-05 OFF-ROAD OPERATIONS, MULTILANE, 15' (4.5 m) TO 24" (600 mm) FROM PAVEMENT EDGE
- 701421-08 LANE CLOSURE, MULTILANE, DAY OPERATIONS ONLY, FOR SPEEDS ≥ 45 MPH TO 55 MPH
- 701426-09 LANE CLOSURE, MULTILANE INTERMITTENT OR MOVING OPERATION, FOR SPEEDS ≥ 45 MPH
- 701901-07 TRAFFIC CONTROL DEVICES

**PROPOSED
HIGHWAY PLANS**

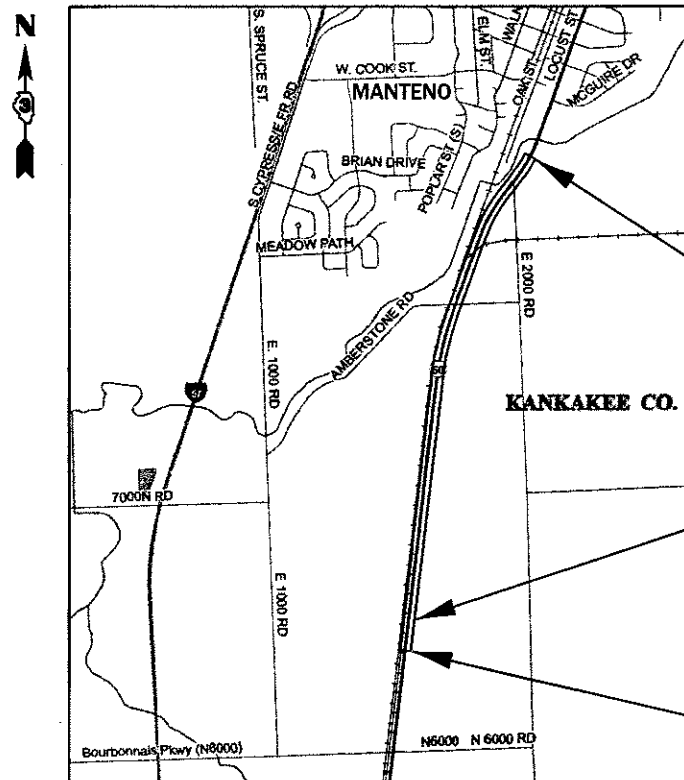
**FAP ROUTE 840 (IL 50)
SECTION (140) SFY
PROJECT: HSIP - 3219 (898)
SHOULDER WIDENING AND RUMBLE STRIPS
KANKAKEE COUNTY**

C-93-008-18



FULL SIZE PLANS HAVE BEEN PREPARED USING STANDARD ENGINEERING SCALES. REDUCED SIZED PLANS WILL NOT CONFORM TO STANDARD SCALES. IN MAKING MEASUREMENTS ON REDUCED PLANS, THE ABOVE SCALES MAY BE USED.

J.U.L.I.E.
JOINT UTILITY LOCATION INFORMATION FOR EXCAVATION
1-800-892-0123
OR 811



PROJECT ENDS
0.11 MI NORTH OF 2000 E RD
STA 429+50

STATION EQUATION
STA 583+90.11 BK =
STA 329+87.12 AH

PROJECT BEGINS
0.45 MI NORTH OF 6000 N RD
STA 578+17

GROSS & NET LENGTH = 10,536 FT. = 1.995 MILES

PROJECT ENGINEER: JOE KANNEL, P.E.
UNIT CHIEF: MARC BUDZYNSKI, P.E.
DISTRICT 3 NO. (815) 434-6131
CONTRACT NO. 66H71

MINOR ARTERIAL
2015 ADT=8550
P.V.=86.2% S.U.=8.5% M.U.=5.3%

STATE OF ILLINOIS
DEPARTMENT OF TRANSPORTATION

SUBMITTED March 23, 2018
K. Marshall
REGIONAL ENGINEER

May 11, 2018
[Signature]
ENGINEER OF DESIGN AND ENVIRONMENT

May 11, 2018
[Signature]
DIRECTOR OF HIGHWAYS PROJECT IMPLEMENTATION

**PRINTED BY THE AUTHORITY
OF THE STATE OF ILLINOIS**

GENERAL NOTES

THE THICKNESS OF HMA SHOWN ON THE PLANS IS THE NOMINAL THICKNESS. DEVIATIONS FROM THE NOMINAL THICKNESS WILL BE PERMITTED WHEN SUCH DEVIATIONS OCCUR DUE TO IRREGULARITIES IN THE EXISTING SURFACE OR BASE ON WHICH THE HMA IS PLACED.

THE HMA SURFACE OF ALL MAILBOX TURNOUTS, PRIVATE ENTRANCES, COMMERCIAL ENTRANCES, AND SIDE ROADS SHALL BE MADE NEATLY, IN A WORKMANLIKE MANNER, AND SHALL ACCURATELY CONFORM TO THE SHAPES AND DIMENSIONS SHOWN ON THE PLAN DETAILS. IF REQUIRED BY THE ENGINEER, THE CONTRACTOR SHALL SAW CUT THE HMA SURFACE TO CONFORM TO THE SHAPES AND DIMENSIONS SHOWN ON THE PLAN DETAILS. THIS WORK WILL BE INCLUDED IN THE COST OF THE HMA SURFACE.

THE ENGINEER WILL BE THE SOLE JUDGE CONCERNING CURING TIME FOR THE VARIOUS HMA LIFTS.

FOR STABILIZATION, ALL TYPE III BARRICADES WILL REQUIRE A MINIMUM OF FOUR SAND BAGS PER BARRICADE.

SEEDING WILL NOT BE PERMITTED AT ANY TIME WHEN THE GROUND IS FROZEN, WET, OR IN AN UNTILLABLE CONDITION. LOCATIONS TO BE SEEDED WILL BE DETERMINED BY THE ENGINEER.

ANY REFERENCE TO A STANDARD IN THESE PLANS SHALL BE INTERPRETED TO MEAN THE EDITION AS INDICATED BY THE SUBNUMBER SHOWN IN THE LIST OF STANDARDS OR THE COPY INCLUDED IN THESE PLANS.

THE FOLLOWING RATES OF APPLICATION HAVE BEEN USED IN CALCULATING PLAN QUANTITIES:

HMA RESURFACING	112	LBS / SQ YD / IN
-----------------	-----	------------------

ALL DAMAGE TO DEPARTMENT OWNED UNDERGROUND FACILITIES, CAUSED BY THE CONTRACTOR SHALL BE REPAIRED TO THE SATISFACTION OF THE DEPARTMENT AT THE CONTRACTOR'S EXPENSE. THIS SHALL INCLUDE ALL TEMPORARY REPAIRS REQUIRED TO KEEP THE FACILITY OPERATIONAL WHILE MATERIAL IS BEING OBTAINED TO MAKE PERMANENT REPAIRS. SPlicing OF ELECTRIC CABLE WILL NOT BE ALLOWED. ELECTRIC CABLE SHALL BE REPLACED FROM POLE TO POLE OR CONTROLLER.

THE CONTRACTOR SHALL CONTACT JULIE AT LEAST 48 HOURS PRIOR TO EXCAVATION TO DETERMINE WHICH UTILITIES ARE IN THE AREA.

COMMITMENTS:

LOCATION(S):	ENTIRE PROJECT	ENTIRE PROJECT
MIXTURE USE(S):	SHOULDER BOTTOM LIFT(S)	SHOULDER TOP LIFT (2")
BINDER GRADE (PG):	PG 64-22	PG 64-22
DESIGN AIR VOIDS:	4.0% @ N50	4.0% @ N50
MIXTURE COMPOSITION: (MIXTURE GRADATION)	IL-19.0	IL-9.5 FG
FRICITION AGGREGATE:	-	MIXTURE C
MIXTURE WEIGHT:	112.0 LB/SY/IN	112.0 LB/SY/IN
QUALITY MANAGEMENT PROGRAM:	QC/QA	QC/QA
SUBLOT SIZE:	N/A	N/A
DENSITY TEST METHOD:	CORES	% GROWTH CURVE

STATE OF ILLINOIS
DEPARTMENT OF TRANSPORTATION
DISTRICT THREE
AS BUILT INFORMATION

SUPERVISING CONSTRUCTION FIELD ENGINEER

RESIDENT ENGINEER / TECHNICIAN

START & END DATES
OF CONSTRUCTION:

INSPECTORS:

STATE OF ILLINOIS
DEPARTMENT OF TRANSPORTATION
DISTRICT THREE

PREPARED BY: Tom Branch
DISTRICT STUDIES & PLANS ENGINEER

DATE: 3-22-18

EXAMINED BY: ASB
DISTRICT CONSTRUCTION ENGINEER

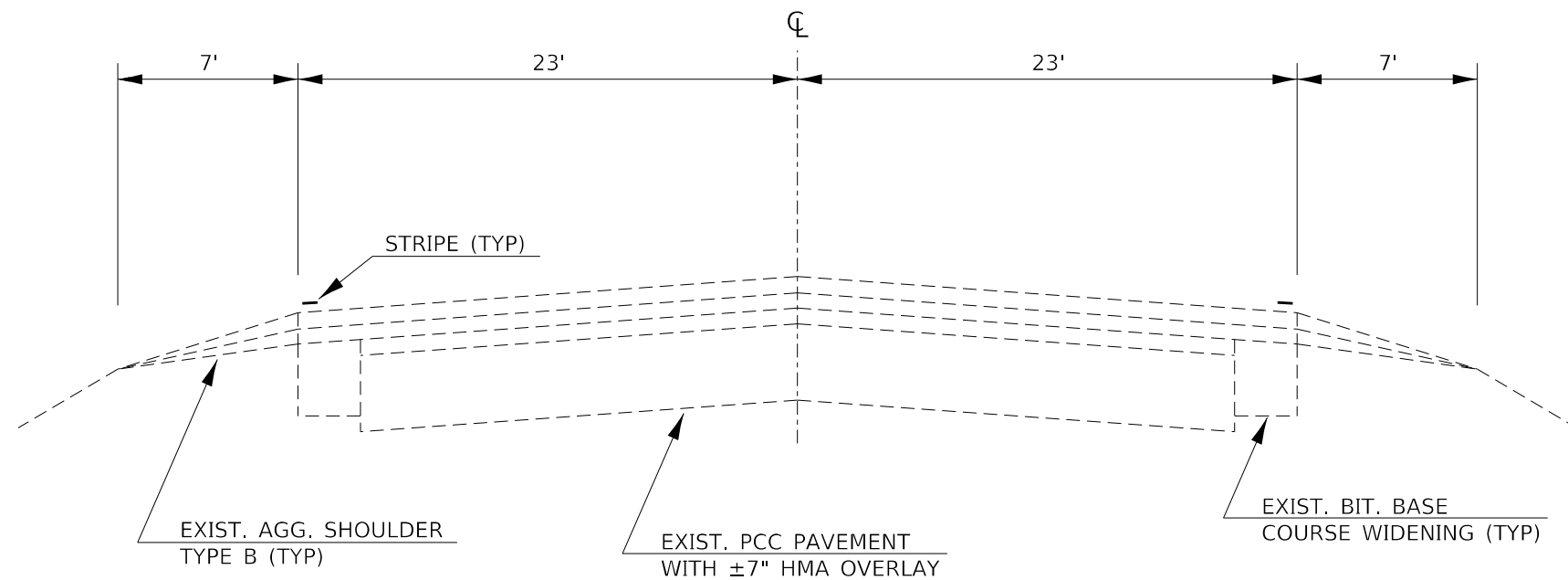
Michael Ash
DISTRICT MATERIALS ENGINEER

Tom Branch
DISTRICT OPERATIONS ENGINEER

CODE NO.	ITEM	UNIT	TOTAL QUANTITY	CONSTR. CODE
				90% FED
				10% STATE
				ROADWAY
				0021
				URBAN
20200600	EXCAVATING AND GRADING EXISTING SHOULDER	UNIT	211	211
40600290	BITUMINOUS MATERIALS (TACK COAT)	POUND	4215	4215
48203029	HOT-MIX ASPHALT SHOULDERS, 8"	SQ YD	9365	9365
64200108	SHOULDER RUMBLE STRIPS, 8 INCH	FOOT	21072	21072
* 66900200	NON-SPECIAL WASTE DISPOSAL	CU YD	625	625
* 66900450	SPECIAL WASTE PLANS AND REPORTS	LSUM	1.0	1.0
* 66900530	SOIL DISPOSAL ANALYSIS	EACH	6	6
67100100	MOBILIZATION	LSUM	1.0	1.0
70100310	TRAFFIC CONTROL AND PROTECTION, STANDARD 701421	LSUM	1.0	1.0
70103815	TRAFFIC CONTROL SURVEILLANCE	CAL DA	5	5
* 78008210	POLYUREA PAVEMENT MARKING TYPE I - LINE 4"	FOOT	42144	42144
X0800001	SHOULDER REMOVAL (SPECIAL)	SQ YD	9365	9365
Z0030850	TEMPORARY INFORMATION SIGNING	SQ FT	42	42
Z0048665	RAILROAD PROTECTIVE LIABILITY INSURANCE	LSUM	1.0	1.0

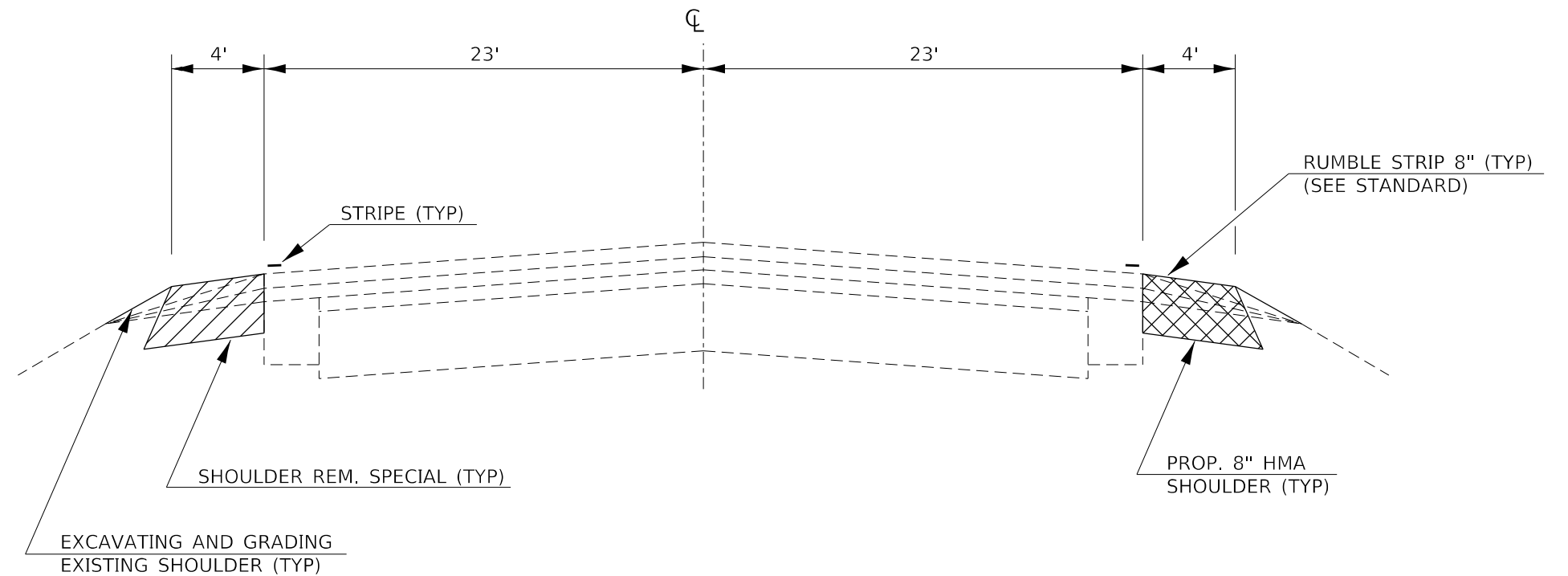
* SPECIALTY ITEM

FILE NAME =	USER NAME = bwtzmskln	DESIGNED -	REVISED -	STATE OF ILLINOIS DEPARTMENT OF TRANSPORTATION	SUMMARY OF QUANTITIES				F.A.P. RTE.	SECTION	COUNTY	TOTAL SHEETS	SHEET NO.
pw711084EBIDINTEG.Illinois.gov\FWIDOT\Documents\DOT Office\District 3\Project\022897\1\CADD\data\0369H71-sh-	DRAWN -	REVISED -	840						(140) SFY	KANKAKEE	6	3	
PLOT SCALE = 100,0000' / in.	CHECKED -	REVISED -	SCALE: SHEET OF SHEETS STA. TO STA.				ILLINOIS FED. AID PROJECT						
PLOT DATE = 3/19/2013	DATE -	REVISED -	CONTRACT NO. 66H71										



EXISTING TYPICAL SECTION

STA 578+17 TO STA 583+90.11
 STATION EQUATION 583+90.11 BK = 329+87.12 AH
 STA 329+87.12 TO STA 429+50



PROPOSED TYPICAL SECTION

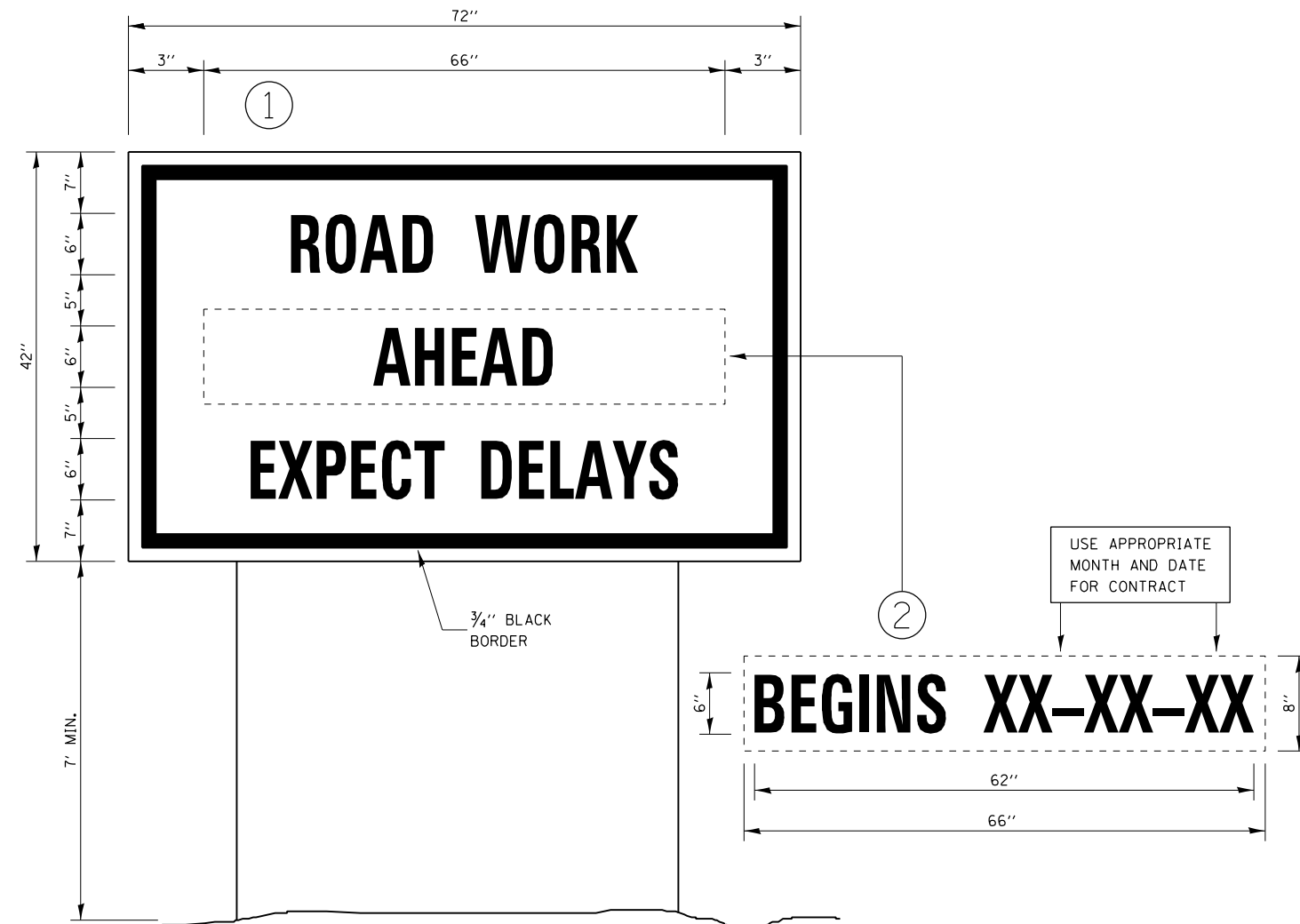
STA 578+17 TO STA 583+90.11
 STATION EQUATION 583+90.11 BK = 329+87.12 AH
 STA 329+87.12 TO STA 429+50

FILE NAME =	USER NAME = budzynsklm	DESIGNED -	REVISED -	STATE OF ILLINOIS DEPARTMENT OF TRANSPORTATION	TYPICAL SECTIONS			F.A.P. RTE.	SECTION	COUNTY	TOTAL SHEETS	SHEET NO.
pw:\il084EBID\INTEG\Illnotes.gov\PWIDOT\Documents\DOT Office\District 3\Projects\D366H71\CADDData\D366H71-shd-cov	DRAWN -	CHECKED -	REVISED -					840	(140) SFY	KANKAKEE	6	4
Default	PLOT SCALE = 100.0000' / in.	DATE -	REVISED -		CONTRACT NO. 66H71			ILLINOIS FED. AID PROJECT				
	PLOT DATE = 3/19/2018				SCALE:	SHEET	OF	SHEETS	STA.	TO STA.		

SHOULDER REMOVAL & REPLACEMENT SCHEDULE									
LOCATION			SIDE	LENGTH	SHOULDER REMOVAL (SPECIAL)	HMA SHOULDERS 8"	BIT MTLs TACK COAT	SHOULDER RUMBLE STRIPS 8"	*POLYUREA PVMT MARKING - TY 1 WHITE 4"
STA	TO	STA	LT / RT	FOOT	SQ YD	SQ YD	POUND	FOOT	FOOT
578+17	TO	583+90.11	LT & RT	573	509	509	229	1146	2292
STA EQN 583+90.11 BK = 329+87.12 AH									
329+87.12	TO	394+85	LT & RT	6498	5776	5776	2599	12996	25992
E AMBERSTONE RD = STA 394+85									
394+85	TO	423+54	LT & RT	2869	2550	2550	1148	5738	11476
N 2000 E RD = STA 423+54									
423+54	TO	429+50	LT & RT	596	530	530	239	1192	2384
TOTAL				10536	9365	9365	4215	21072	42144

*QUANTITY REPRESENTS TWO SEPARATE APPLICATIONS

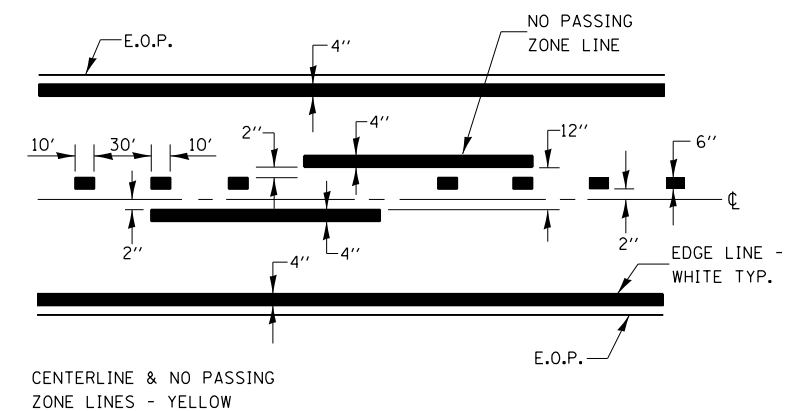
SURVEY MONUMENT SCHEDULE					
GPS NUMBER	DESCRIPTION	EXISTING MONUMENT TYPE	PROPOSED MONUMENT TYPE	MONUMENT RECORD TO BE RECORDED	RESPONSIBILITY
N/A	NO PERMANENT SURVEY MARKERS OR SECTION CORNER MARKERS TO BE SET ON THIS JOB	N/A	N/A	N/A	N/A
NO KNOWN SURVEY OR CENTERLINE CONTROL MONUMENTS FALL ON THE ROAD SURFACE THAT WILL BE DISTURBED BY THE SHOULDER WORK. UNKNOWN MONUMENTS MAY EXIST. THE R.E. MUST TIE AND REQUEST PLATS AND PLANS PERSONNEL TO GPS ANY MONUMENTS FOUND WHICH ARE SUBJECT TO DAMAGE OR DESTRUCTION FROM SHOULDER WORK, AND INFORM THEM TO RESET THESE MONUMENTS UPON JOB COMPLETION. NO MONUMENT RECORDS ARE ANTICIPATED FOR THIS JOB.					



TEMPORARY INFORMATION SIGNING

NOTES:

1. USE 6" D BLACK LETTERING ON FLOURESENT ORANGE BACKGROUND.
2. ERECT SIGNS AT LOCATIONS IN ADVANCE OF THE "ROAD CONSTRUCTION AHEAD" SIGNS AS DIRECTED BY THE ENGINEER.
3. ERECT SIGN ① WITH INSTALLED PANEL ② A MINIMUM OF ONE WEEK PRIOR TO THE START OF THE LANE CLOSURE.
4. REMOVE PANEL ② ON THAT DATE.
5. SEE SPECIAL PROVISION "TEMPORARY INFORMATION SIGNING" FOR ADDITIONAL INFORMATION.
6. WILL BE PAID FOR PER SQ FT AS "TEMPORARY INFORMATION SIGNING". EACH SIGN = 21 SQ FT AND THE DATE PANEL ② WILL NOT BE MEASURED SEPARATELY FOR PAYMENT.



PAVEMENT MARKING

FILE NAME =	USER NAME = budzynsklm	DESIGNED -	REVISED -	STATE OF ILLINOIS DEPARTMENT OF TRANSPORTATION	DETAILS	F.A.P. RTE.	SECTION	COUNTY	TOTAL SHEETS	SHEET NO.	
pw:\il084EBID\INTEG.\ilnotes.gov\PWIDOT\Documents\DOT Office\District 3\Projects\D366H71\CADDData\D366H71-sht-cov	DRAWN -	REVISED -	840			(140) SFY	KANKAKEE	6	6		
Default	PLOT SCALE = 100.0000' / in.	CHECKED -	REVISED -			CONTRACT NO. 66H71					
	PLOT DATE = 3/19/2018	DATE -	REVISED -			SCALE:	SHEET OF SHEETS	STA. TO STA.	ILLINOIS FED. AID PROJECT		