

STATE OF ILLINOIS
DEPARTMENT OF TRANSPORTATION

F.A.P. RTE.	SECTION	COUNTY	TOTAL SHEETS	SHEET NO.
697	(13) SFY	FORD	6	1
		ILLINOIS	CONTRACT NO. 66H73	

INDEX OF SHEETS

- 1 COVER SHEET
- 2 GENERAL NOTES
- 3 SUMMARY OF QUANTITIES
- 4 TYPICAL SECTIONS
- 5 SCHEDULES
- 6 DETAILS

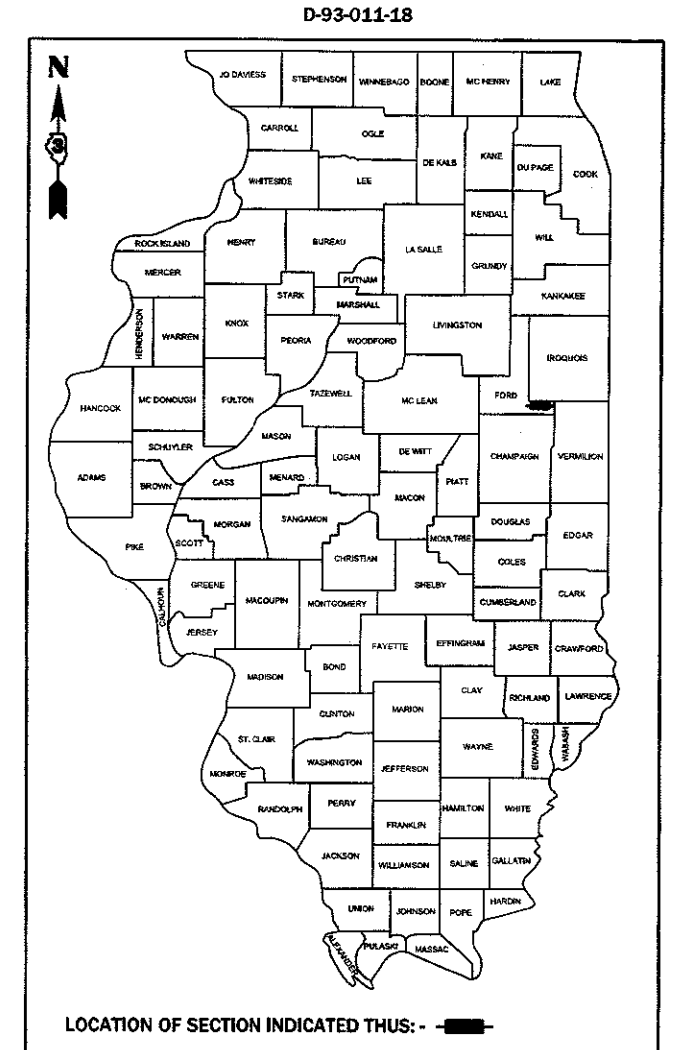
LIST OF ILLINOIS DOT HIGHWAY STANDARDS

- 000001-06 STANDARD SYMBOLS, ABBREVIATIONS AND PATTERNS
- 001006 DECIMAL OF AN INCH AND OF A FOOT
- 406201-01 MAILBOX TURNOUT
- 482001-02 HMA SHOULDER ADJACENT TO FLEXIBLE PAVEMENT
- 482006-03 HMA SHOULDER ADJACENT TO RIGID PAVEMENT
- 642006 SHOULDER RUMBLE STRIPS, 8 INCH
- 701006-05 OFF-ROAD OPERATIONS 2L, 2W, 15' (4.5 m) TO 24" (600 mm) FROM PAVEMENT EDGE
- 701311-03 LANE CLOSURE, 2L, 2W, MOVING OPERATIONS - DAY ONLY
- 701326-04 LANE CLOSURE, 2L, 2W, PAVEMENT WIDENING, FOR SPEEDS ≥ 45 MPH
- 701901-07 TRAFFIC CONTROL DEVICES

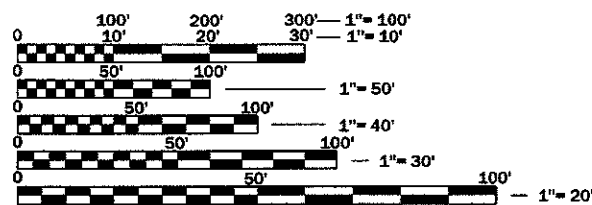
**PROPOSED
HIGHWAY PLANS**

FAP ROUTE 697 (IL 9)
SECTION (13) SFY
PROJECT: HSIP - OFS6 (496)
SHOULDER WIDENING AND RUMBLE STRIPS
FORD COUNTY

C-93-010-18

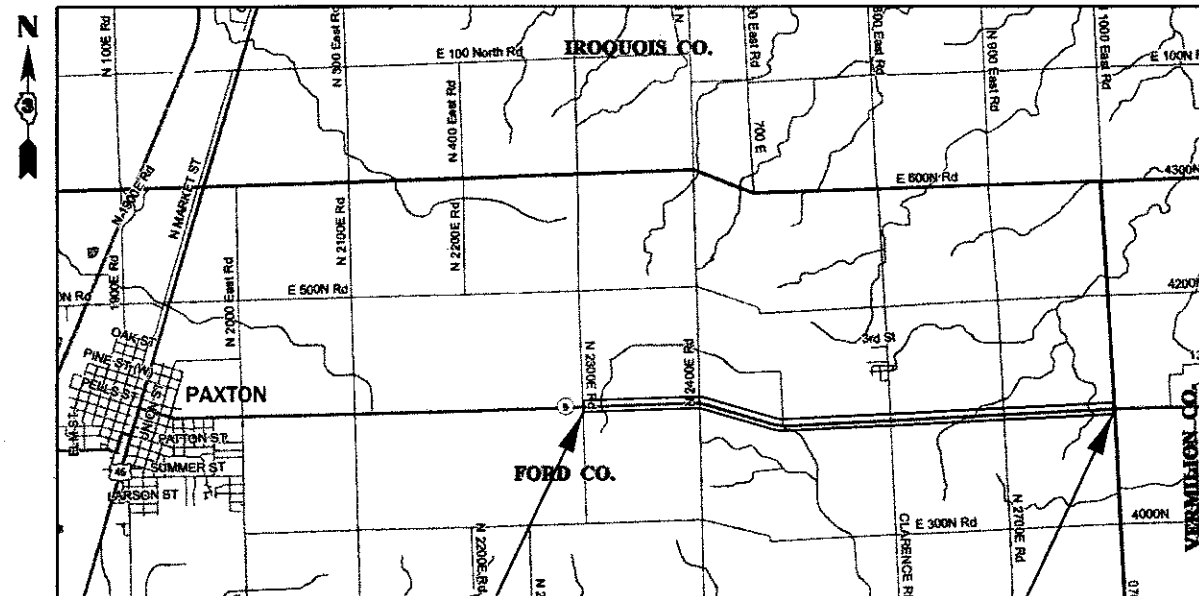


MINOR ARTERIAL
2015 ADT=2200
P.V.=81.6% S.U.=9.3% M.U.=9.1%



FULL SIZE PLANS HAVE BEEN PREPARED USING STANDARD ENGINEERING SCALES. REDUCED SIZED PLANS WILL NOT CONFORM TO STANDARD SCALES. IN MAKING MEASUREMENTS ON REDUCED PLANS, THE ABOVE SCALES MAY BE USED.

J.U.L.I.E.
JOINT UTILITY LOCATION INFORMATION FOR EXCAVATION
1-800-892-0123
OR 811



PROJECT BEGINS
N 2300 E RD
STA 171+20

PROJECT ENDS
N 2800 E RD
STA 418+00

GROSS & NET LENGTH = 24,680 FT. = 4.674 MILES

PROJECT ENGINEER: JOE KANNEL, P.E.
UNIT CHIEF: MARC BUDZYNSKI, P.E.
DISTRICT 3 NO. (815) 434-6131
CONTRACT NO. 66H73

STATE OF ILLINOIS
DEPARTMENT OF TRANSPORTATION

SUBMITTED March 22 2018
K. Mauch
REGIONAL ENGINEER

May 11 2018
E.A. Etk
ENGINEER OF DESIGN AND ENVIRONMENT

May 10 2018
David P. Ch...
DIRECTOR OF HIGHWAYS PROJECT IMPLEMENTATION

PRINTED BY THE AUTHORITY
OF THE STATE OF ILLINOIS

GENERAL NOTES

THE THICKNESS OF HMA SHOWN ON THE PLANS IS THE NOMINAL THICKNESS. DEVIATIONS FROM THE NOMINAL THICKNESS WILL BE PERMITTED WHEN SUCH DEVIATIONS OCCUR DUE TO IRREGULARITIES IN THE EXISTING SURFACE OR BASE ON WHICH THE HMA IS PLACED.

THE HMA SURFACE OF ALL MAILBOX TURNOUTS, PRIVATE ENTRANCES, COMMERCIAL ENTRANCES, AND SIDE ROADS SHALL BE MADE NEATLY, IN A WORKMANLIKE MANNER, AND SHALL ACCURATELY CONFORM TO THE SHAPES AND DIMENSIONS SHOWN ON THE PLAN DETAILS. IF REQUIRED BY THE ENGINEER, THE CONTRACTOR SHALL SAW CUT THE HMA SURFACE TO CONFORM TO THE SHAPES AND DIMENSIONS SHOWN ON THE PLAN DETAILS. THIS WORK WILL BE INCLUDED IN THE COST OF THE HMA SURFACE.

THE ENGINEER WILL BE THE SOLE JUDGE CONCERNING CURING TIME FOR THE VARIOUS HMA LIFTS.

FOR STABILIZATION, ALL TYPE III BARRICADES WILL REQUIRE A MINIMUM OF FOUR SAND BAGS PER BARRICADE.

SEEDING WILL NOT BE PERMITTED AT ANY TIME WHEN THE GROUND IS FROZEN, WET, OR IN AN UNTILLABLE CONDITION. LOCATIONS TO BE SEEDED WILL BE DETERMINED BY THE ENGINEER.

ANY REFERENCE TO A STANDARD IN THESE PLANS SHALL BE INTERPRETED TO MEAN THE EDITION AS INDICATED BY THE SUBNUMBER SHOWN IN THE LIST OF STANDARDS OR THE COPY INCLUDED IN THESE PLANS.

THE FOLLOWING RATES OF APPLICATION HAVE BEEN USED IN CALCULATING PLAN QUANTITIES:

HMA RESURFACING	112	LBS / SQ YD / IN
-----------------	-----	------------------

ALL DAMAGE TO DEPARTMENT OWNED UNDERGROUND FACILITIES, CAUSED BY THE CONTRACTOR SHALL BE REPAIRED TO THE SATISFACTION OF THE DEPARTMENT AT THE CONTRACTOR'S EXPENSE. THIS SHALL INCLUDE ALL TEMPORARY REPAIRS REQUIRED TO KEEP THE FACILITY OPERATIONAL WHILE MATERIAL IS BEING OBTAINED TO MAKE PERMANENT REPAIRS. SPlicing OF ELECTRIC CABLE WILL NOT BE ALLOWED. ELECTRIC CABLE SHALL BE REPLACED FROM POLE TO POLE OR CONTROLLER.

THE CONTRACTOR SHALL CONTACT JULIE AT LEAST 48 HOURS PRIOR TO EXCAVATION TO DETERMINE WHICH UTILITIES ARE IN THE AREA.

LOCATION(S):	ENTIRE PROJECT	ENTIRE PROJECT
MIXTURE USE(S):	SHOULDER BOTTOM LIFT(S)	SHOULDER TOP LIFT (2")
BINDER GRADE (PG):	PG 64-22	PG 64-22
DESIGN AIR VOIDS:	4.0% @ N50	4.0% @ N50
MIXTURE COMPOSITION: (MIXTURE GRADATION)	1L-19.0	1L-9.5 FG
FRICTION AGGREGATE:	-	MIXTURE C
MIXTURE WEIGHT:	112.0 LB/SY/IN	112.0 LB/SY/IN
QUALITY MANAGEMENT PROGRAM:	QC/QA	QC/QA
SUBLOT SIZE:	N/A	N/A
DENSITY TEST METHOD:	CORES	% GROWTH CURVE

COMMITMENTS:

STATE OF ILLINOIS
DEPARTMENT OF TRANSPORTATION
DISTRICT THREE
AS BUILT INFORMATION

SUPERVISING CONSTRUCTION FIELD ENGINEER

RESIDENT ENGINEER / TECHNICIAN

START & END DATES
OF CONSTRUCTION:

INSPECTORS:

STATE OF ILLINOIS
DEPARTMENT OF TRANSPORTATION
DISTRICT THREE

PREPARED BY: Tom Beauk
DISTRICT STUDIES & PLANS ENGINEER

DATE: 3-22-18

EXAMINED BY: [Signature]
DISTRICT CONSTRUCTION ENGINEER

[Signature]
DISTRICT MATERIALS ENGINEER

[Signature]
DISTRICT OPERATIONS ENGINEER

STATE OF ILLINOIS
DEPARTMENT OF TRANSPORTATION

GENERAL NOTES

SCALE: SHEET OF SHEETS STA. TO STA.

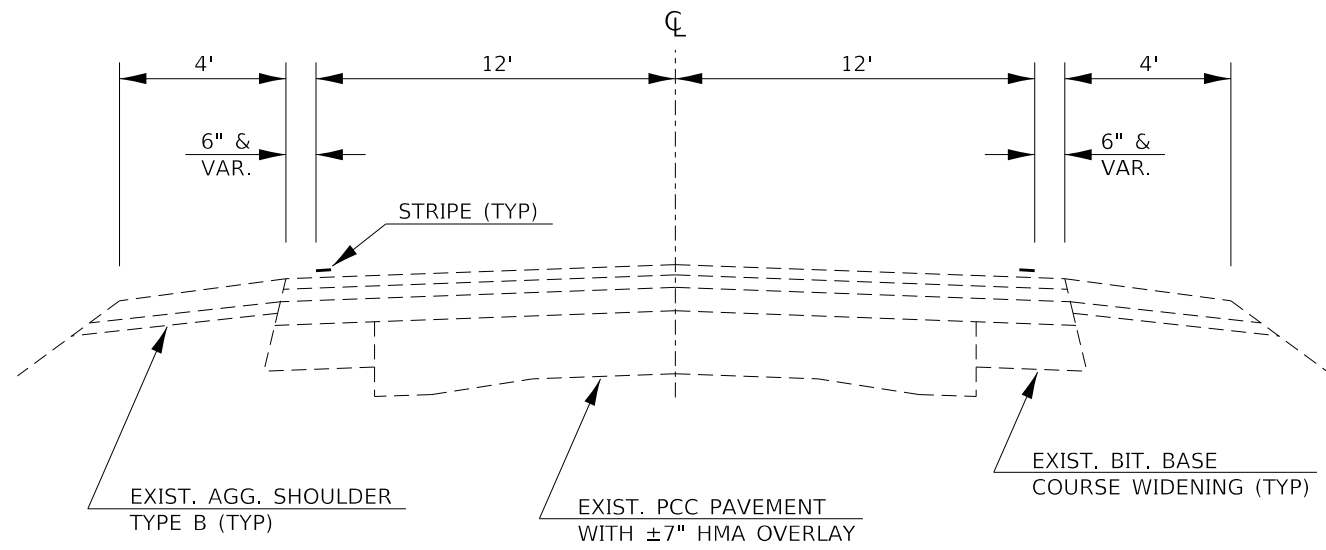
F.A.P. RTE.	SECTION	COUNTY	TOTAL SHEETS	SHEET NO.
697	(13) SFY	FORD	6	2
CONTRACT NO. 68H73				
ILLINOIS FED. AID PROJECT				

FILE NAME	USER NAME	DESIGNED	REVISED
pw:\IL08\FBI\INTEG\Illinois.gov\PWDOT\Documents\DOT Offices\Dist3\Projects\0368H73\CADD\Drawings\0368H73-sh...	budzynskm	-	-
		CHECKED	REVISED
		DATE	REVISED

CODE NO.	ITEM	UNIT	TOTAL QUANTITY	CONSTR. CODE	
				90% FED ROADWAY	10% STATE RURAL
20200600	EXCAVATING AND GRADING EXISTING SHOULDER	UNIT	494	494	
40600290	BITUMINOUS MATERIALS (TACK COAT)	POUND	9888	9888	
40800050	INCIDENTAL HOT-MIX ASPHALT SURFACING	TON	3.8	3.8	
44000157	HOT-MIX ASPHALT SURFACE REMOVAL, 2"	SQ YD	33	33	
48203029	HOT-MIX ASPHALT SHOULDERS, 8"	SQ YD	21938	21938	
64200108	SHOULDER RUMBLE STRIPS, 8 INCH	FOOT	49360	49360	
67100100	MOBILIZATION	LSUM	1.0	1.0	
70100500	TRAFFIC CONTROL AND PROTECTION, STANDARD 701326	LSUM	1.0	1.0	
70103815	TRAFFIC CONTROL SURVEILLANCE	CAL DA	5	5	
* 78001110	PAINT PAVEMENT MARKING - LINE 4"	FOOT	98720	98720	
X0800001	SHOULDER REMOVAL (SPECIAL)	SQ YD	21938	21938	
Z0030850	TEMPORARY INFORMATION SIGNING	SQ FT	42	42	

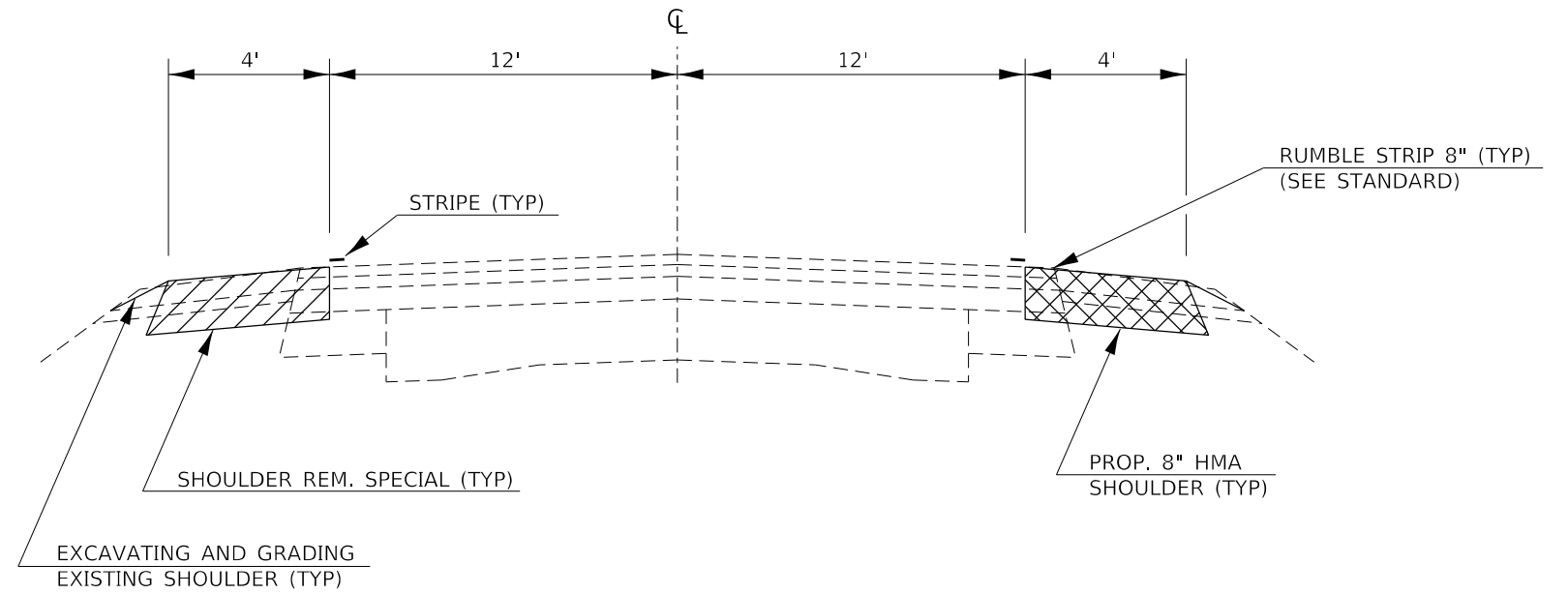
* SPECIALTY ITEM

FILE NAME =	USER NAME = budzyrekin	DESIGNED =	REVISED =	STATE OF ILLINOIS DEPARTMENT OF TRANSPORTATION	SUMMARY OF QUANTITIES				F.A.P. RTE.	SECTION	COUNTY	TOTAL SHEETS	SHEET NO.
pw:\ill084EBIDNTEG.M\illinois.gov\FWIDOT\Documents\DOT Cl\files\District 3\Projects\0366H73\ICAD\Data\0366H73-est-drawn	DRAWN =	REVISED =	REVISED =						697	(13) SFY	FORD	6	3
	FLOT SCALE = 100,0000' / in.	CHECKED =	REVISED =		CONTRACT NO. 66H73								
Defeat	PLOT DATE = 3/19/2018	DATE =	REVISED =		SCALE:	SHEET	OF	SHEETS	STA.	TO STA.	ILLINOIS FED. AID PROJECT		



EXISTING TYPICAL SECTION

STA 171+20 TO STA 418+00



PROPOSED TYPICAL SECTION

STA 171+20 TO STA 418+00

FILE NAME =	USER NAME = budzynsklm	DESIGNED -	REVISED -	STATE OF ILLINOIS DEPARTMENT OF TRANSPORTATION	TYPICAL SECTIONS			F.A.P. RTE.	SECTION	COUNTY	TOTAL SHEETS	SHEET NO.
pw:\il084EBID\INTEG\Illnotes.gov\PWIDOT\Documents\DOT\Office\District 3\Projects\D366H73\CADDData\D366H73-sht-cv	DRAWN -	REVISIONS	REVISIONS					697	(13) SFY	FORD	6	4
Default	PLOT SCALE = 100.0000' / in.	CHECKED -	REVISIONS		CONTRACT NO. 66H73			ILLINOIS FED. AID PROJECT				
	PLOT DATE = 3/19/2018	DATE -	REVISIONS		SCALE:	SHEET	OF	SHEETS	STA.	TO STA.		

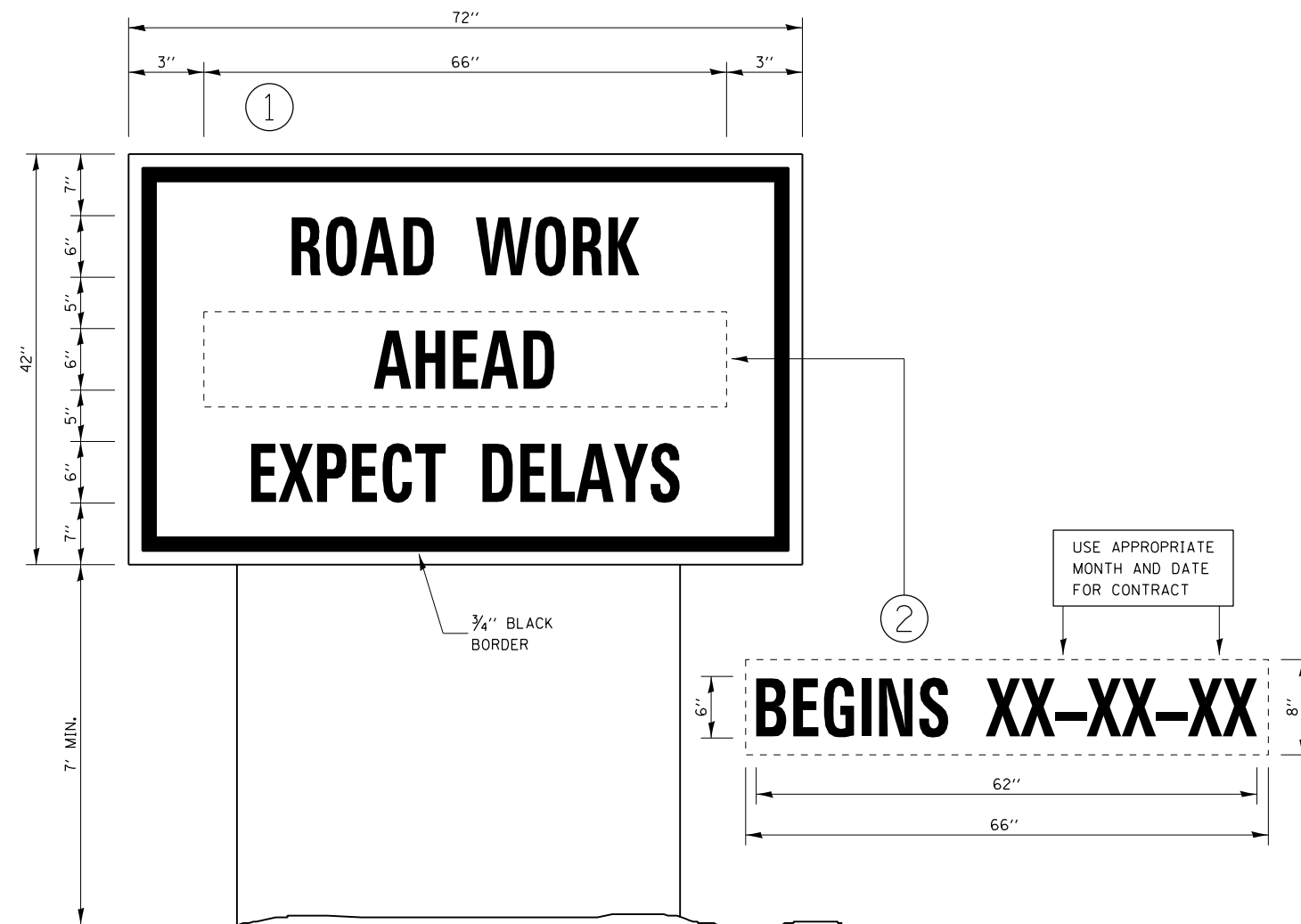
SHOULDER REMOVAL & REPLACEMENT SCHEDULE									
LOCATION			SIDE	LENGTH	SHOULDER REMOVAL (SPECIAL)	HMA SHOULDERS 8"	BIT MTLs TACK COAT	SHOULDER RUMBLE STRIPS 8"	*PAINT PVMT MARKING WHITE 4"
STA	TO	STA	LT / RT	FOOT	SQ YD	SQ YD	POUND	FOOT	FOOT
171+20	TO	225+00	LT & RT	5380	4782	4782	2152	10760	21520
N 2400 E RD = STA 225+00									
225+00	TO	314+50	LT & RT	8950	7956	7956	3580	17900	35800
N 2600 E RD = STA 314+50									
314+50	TO	366+90	LT & RT	5240	4658	4658	2096	10480	20960
N 2700 E RD = STA 366+90									
366+90	TO	418+00	LT & RT	5110	4542	4542	2044	10220	20440
TOTAL				24680	21938	21938	9872	49360	98720

*QUANTITY REPRESENTS TWO SEPARATE APPLICATIONS

MAILBOX TURNOUT REMOVAL & REPLACEMENT SCHEDULE				
STA / SIDE	AREA	HMA SURF REMOVAL 2"	INCIDENTAL HMA SURF 2"	BIT MTLs TACK COAT
		SQ YD	TON	POUND
318+25 RT	39	21	2.4	10
397+25 RT	27	12	1.4	6
TOTAL	66	33	3.8	16

THE FIRST 4 FEET OF THE MBTO ADJACENT TO THE TRAVELED WAY IS PAID AS SHOULDER REMOVAL (SPECIAL) AND HMA SHOULDERS 8" THE REMAINING AREA OF THE MBTO IS PAID AS HMA SURFACE REMOVAL 2" AND INCIDENTAL HMA SURFACE 2"

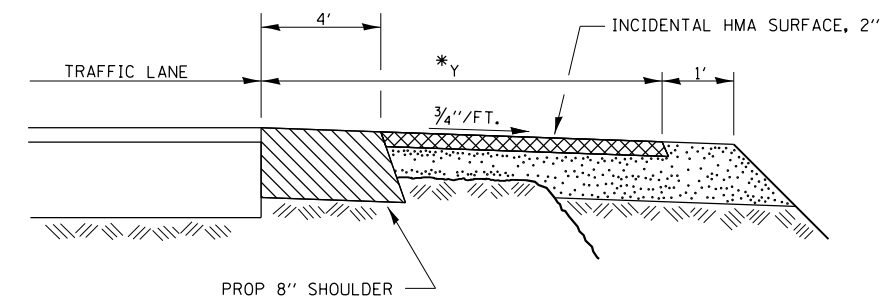
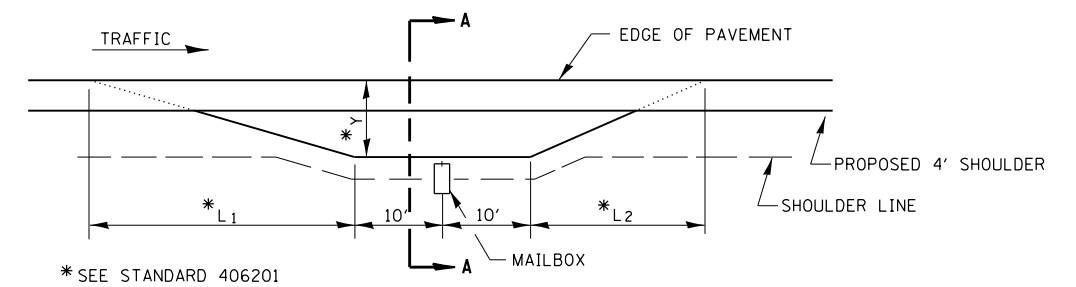
SURVEY MONUMENT SCHEDULE					
GPS NUMBER	DESCRIPTION	EXISTING MONUMENT TYPE	PROPOSED MONUMENT TYPE	MONUMENT RECORD TO BE RECORDED	RESPONSIBILITY
N/A	NO PERMANENT SURVEY MARKERS OR SECTION CORNER MARKERS TO BE SET ON THIS JOB	N/A	N/A	N/A	N/A
ALL FOUND SURVEY MONUMENTS FALL ON THE ROAD SURFACE BUT SHOULD BE UNDISTURBED BY SHOULDER WORK. UNKNOWN MONUMENTS MAY EXIST. THE R.E. MUST TIE AND REQUEST PLATS AND PLANS PERSONNEL TO GPS ANY MONUMENTS FOUND WHICH ARE SUBJECT TO DAMAGE OR DESTRUCTION FROM SHOULDER WORK, AND INFORM THEM TO RESET THESE MONUMENTS UPON JOB COMPLETION. NO MONUMENT RECORDS ARE ANTICIPATED FOR THIS JOB.					



TEMPORARY INFORMATION SIGNING

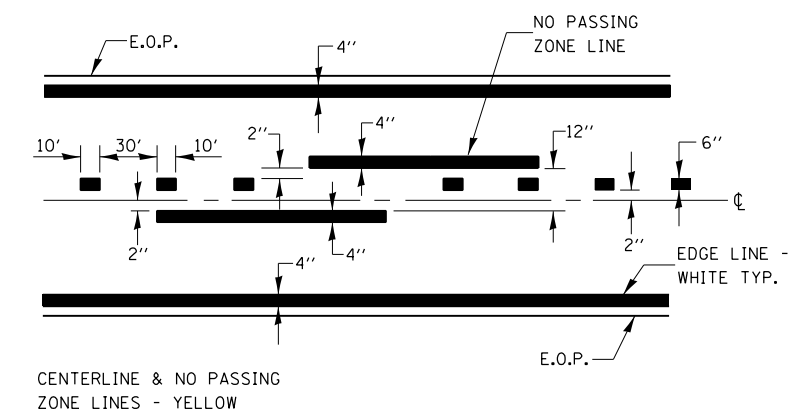
NOTES:

1. USE 6" D BLACK LETTERING ON FLOURESENT ORANGE BACKGROUND.
2. ERECT SIGNS AT LOCATIONS IN ADVANCE OF THE "ROAD CONSTRUCTION AHEAD" SIGNS AS DIRECTED BY THE ENGINEER.
3. ERECT SIGN ① WITH INSTALLED PANEL ② A MINIMUM OF ONE WEEK PRIOR TO THE START OF THE LANE CLOSURE.
4. REMOVE PANEL ② ON THAT DATE.
5. SEE SPECIAL PROVISION "TEMPORARY INFORMATION SIGNING" FOR ADDITIONAL INFORMATION.
6. WILL BE PAID FOR PER SQ FT AS "TEMPORARY INFORMATION SIGNING". EACH SIGN = 21 SQ FT AND THE DATE PANEL ② WILL NOT BE MEASURED SEPARATELY FOR PAYMENT.



SECTION A-A

RURAL MAILBOX TURNOUT DETAILS (NTS)



PAVEMENT MARKING

FILE NAME =	USER NAME = budzynsklm	DESIGNED -	REVISED -	STATE OF ILLINOIS DEPARTMENT OF TRANSPORTATION	DETAILS	F.A.P. RTE.	SECTION	COUNTY	TOTAL SHEETS	SHEET NO.	
pw:\il084EBID\INTEG\ilnotes\gov\PWIDOT\Documents\DOT\Office\District 3\Projects\D366H73\CADDData\D366H73-sht-cov	DRAWN -	REVISED -	697			(13) SFY	FORD	6	6		
Default	PLOT SCALE = 100.0000' / in.	CHECKED -	REVISED -			CONTRACT NO. 66H73					
	PLOT DATE = 3/19/2018	DATE -	REVISED -			ILLINOIS FED. AID PROJECT					