

1. COVER SHEET
2. GENERAL NOTES
- 3 - 4. SUMMARY OF QUANTITIES
5. TYPICAL SECTIONS
6. SCHEDULES
- 7 - 8. TRAFFIC CONTROL AND PROTECTION, STANDARD (SPECIAL)
9. WIDTH RESTRICTION SIGNING
10. PAVEMENT MARKING DETAILS
11. MEDIAN DETAILS
- 12 - 18. STRUCTURE REPAIR DETAILS
19. DETAILS

STANDARDS

- | | |
|-----------|--|
| 000001-06 | STANDARD SYMBOLS, ABBREVIATIONS AND PATTERNS |
| 001001-02 | AREAS OF REINFORCEMENT BARS |
| 001006 | DECIMAL OF AN INCH AND OF A FOOT |
| 606001-07 | CONCRETE CURB TYPE B AND COMBINATION CONCRETE CURB AND GUTTER |
| 701101-05 | OFF-ROAD OPERATIONS, MULTILANE, 15' (4.5 m) TO 24' (600 mm) FROM PAVEMENT EDGE |
| 701106-02 | OFF-ROAD OPERATIONS, MULTILANE, MORE THAN 15' (4.5 m) AWAY |
| 701427-05 | LANE CLOSURE, MULTILANE INTERMITTENT OR MOVING OPERATION, FOR SPEEDS ≤ 40 MPH |
| 701801-06 | SIDEWALK, CORNER OR CROSSWALK CLOSURE |
| 701901-07 | TRAFFIC CONTROL DEVICES |
| 704001-08 | TEMPORARY CONCRETE BARRIER |

STATE OF ILLINOIS
DEPARTMENT OF TRANSPORTATION

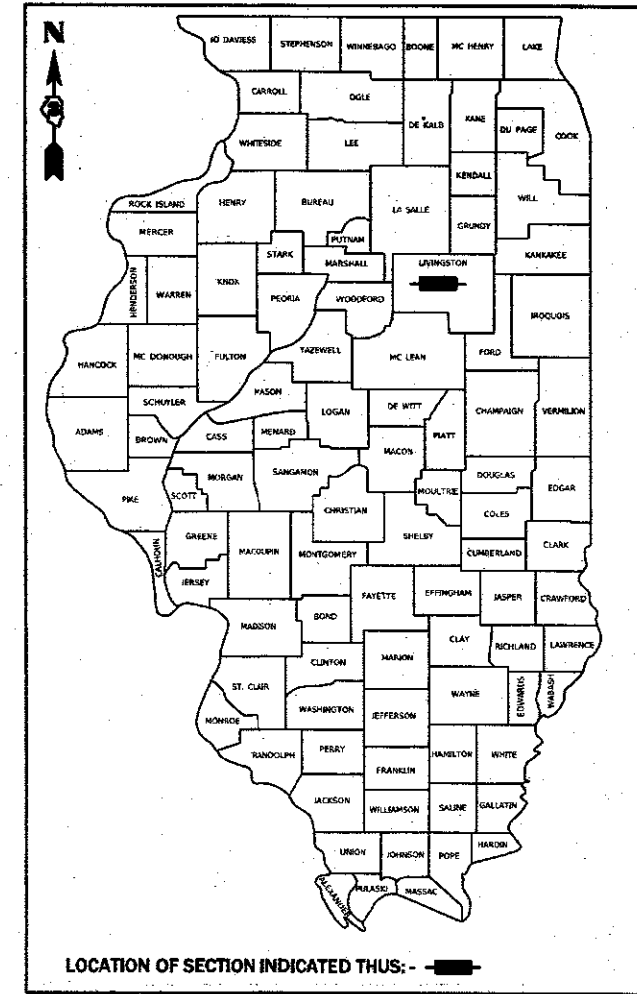
**PROPOSED
HIGHWAY PLANS**

F.A.P. 673 (IL 116)
SECTION (112X-BR)BRR
PROJECT
BRIDGE REPAIRS
LIVINGSTON COUNTY

C-93-042-18

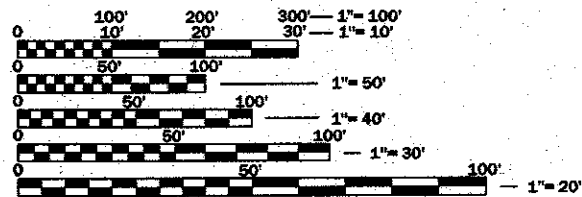
F.A.P. RTE.	SECTION	COUNTY	TOTAL SHEETS	SHEET NO.
673	(112X-BR)BRR	LIVINGSTON	19	1
		ILLINOIS	CONTRACT NO. 66J02	

D-93-003-18



LOCATION OF SECTION INDICATED THIS: - [shaded area]

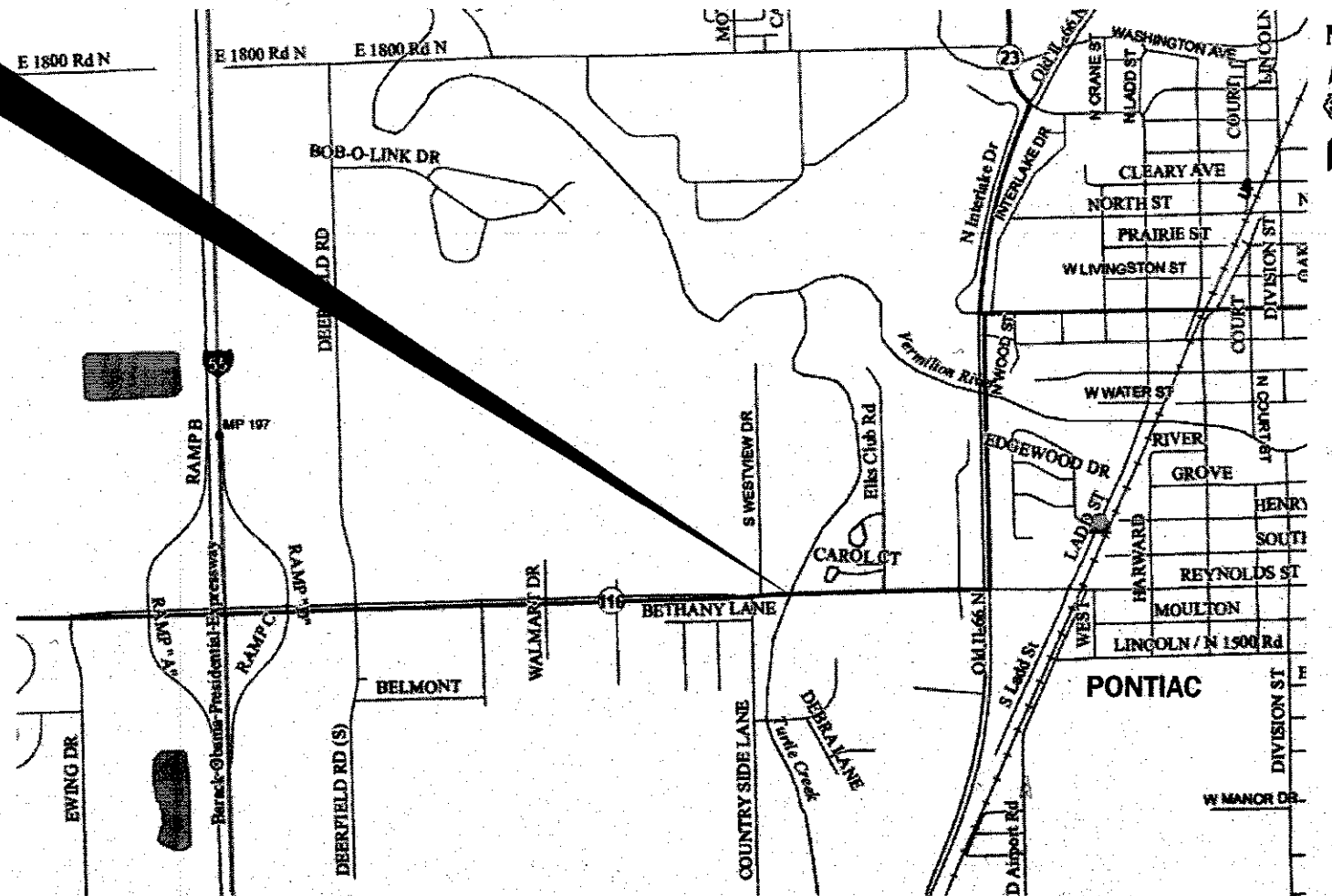
PROJECT LOCATION
STRUCTURE NO. 053-0066
CARRYING F.A.P. ROUTE 673 (IL 116)
OVER TURTLE CREEK
APPROXIMATELY 1.1 MILES EAST OF F.A.I. ROUTE 55 (I-55)
STA. 147+73.54



FULL SIZE PLANS HAVE BEEN PREPARED USING STANDARD ENGINEERING SCALES. REDUCED SIZED PLANS WILL NOT CONFORM TO STANDARD SCALES. IN MAKING MEASUREMENTS ON REDUCED PLANS, THE ABOVE SCALES MAY BE USED.

J.U.L.I.E.
JOINT UTILITY LOCATION INFORMATION FOR EXCAVATION
1-800-892-0123
OR 811

PROJECT ENGINEER: JOE KANNEL P.E.
UNIT CHIEF: RON WOODSHANK
DISTRICT 3 NO. (815) 434-6131
CONTRACT NO. 66J02



GROSS LENGTH = 55.0 FT. = 4.6 MILE
NET LENGTH = 55.5 FT. = 4.6 MILE

FUNCTIONAL CLASSIFICATION
URBAN MINOR ARTERIAL
F.A.P. ROUTE 673 (IL 116)
2017 ADT = 13700
P.V. 96.8% S.U. 2.2% M.U. 1.0%

STATE OF ILLINOIS
DEPARTMENT OF TRANSPORTATION

SUBMITTED 3-29-2018
[Signature]
REGIONAL ENGINEER

May 11 2018
[Signature]
ENGINEER OF DESIGN AND ENVIRONMENT

May 10 2018
[Signature]
DIRECTOR OF HIGHWAYS PROJECT IMPLEMENTATION

**PRINTED BY THE AUTHORITY
OF THE STATE OF ILLINOIS**

GENERAL NOTES

FOR STABILIZATION, ALL TYPE III BARRICADES WILL REQUIRE A MINIMUM OF FOUR SAND BAGS PER BARRICADE.

ANY REFERENCE TO A STANDARD IN THESE PLANS SHALL BE INTERPRETED TO MEAN THE EDITION AS INDICATED BY THE SUBNUMBER SHOWN IN THE LIST OF STANDARDS OR THE COPY INCLUDED IN THESE PLANS.

THE FOLLOWING RATES OF APPLICATION HAVE BEEN USED IN CALCULATING PLAN QUANTITIES:

SHORT TERM PAVEMENT MARKING	10	FT /100 FT OF APPLICATION
-----------------------------	----	---------------------------

THE CONTRACTOR SHALL CONTACT JULIE AT LEAST 48 HOURS PRIOR TO EXCAVATION TO DETERMINE WHICH UTILITIES ARE IN THE AREA.

COMMITMENTS

THE ENGINEER SHALL RECORD FINAL LOCATIONS AND QUANTITIES FOR DECK SLAB REPAIR (PARTIAL DEPTH), DECK SLAB REPAIR (FULL DEPTH), STRUCTURAL REPAIR OF CONCRETE (DEPTH EQUAL TO OR LESS THAN 5") AND STRUCTURAL REPAIR OF CONCRETE (DEPTH GREATER THAN 5") ON "AS-BUILT" DETAIL SHEETS AND SUBMIT THEM TO THE BRIDGE OFFICE IN SPRINGFIELD FOR THEIR RECORDS IN A TIMELY MANNER AFTER PROJECT COMPLETION. CONTACT PERSON IS VICTOR VELIZ, PHONE: (217)-782-2708.

STATE OF ILLINOIS
DEPARTMENT OF TRANSPORTATION
DISTRICT THREE
AS BUILT INFORMATION

SUPERVISING CONSTRUCTION FIELD ENGINEER

RESIDENT ENGINEER / TECHNICIAN

START & END DATES
OF CONSTRUCTION:

INSPECTORS:

PREPARED BY:

DATE:

EXAMINED BY:

STATE OF ILLINOIS
DEPARTMENT OF TRANSPORTATION
DISTRICT THREE

Don Brunk
DISTRICT STUDIES & PLANS ENGINEER

3-27-18

Kyle Vilegas
DISTRICT CONSTRUCTION ENGINEER

Michael H. Smith
DISTRICT MATERIALS ENGINEER

Jan Hefner
DISTRICT OPERATIONS ENGINEER

FILE NAME	USER NAME	DESIGNED	REVISED
pv:\NLD\MSB\INTEG.3\hds.gov\PWDOT\Documents\EDT\Office\District 3\Project\0385\20CAD\Drawings\02-detailed	woodyepj	RW	
		DRAWN	REVISED
		RW	
		CHECKED	REVISED
		EP	
		DATE	REVISED
		2/22/2018	

STATE OF ILLINOIS
DEPARTMENT OF TRANSPORTATION

GENERAL NOTES

SCALE: SHEET 1 OF 1 SHEETS STA. TO STA.

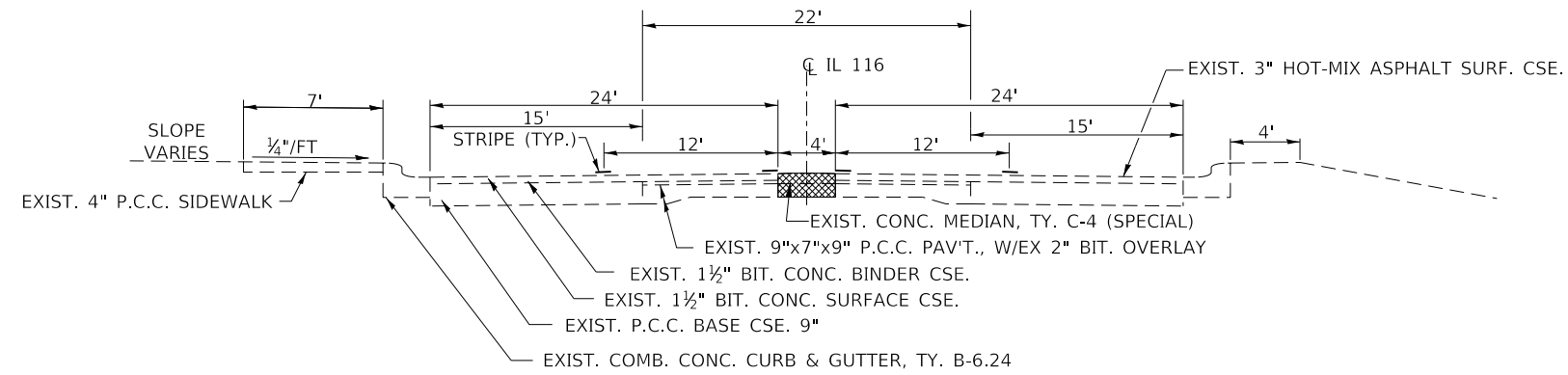
F.A.P. RTE.	SECTION	COUNTY	TOTAL SHEETS	SHEET NO.
673	(112X-BR)RR	LIVINGSTON	19	2
CONTRACT NO. 66J02				
ILLINOIS FEDERAL PROJECT				

CODE NO.	ITEM	UNIT	TOTAL QUANTITY	CONSTRUCTION CODE
				CONTRACT MAINTENANCE
				100% STATE BRIDGE
				0047
				S.N. 053-0066
42000060	WELDED WIRE REINFORCEMENT	SQ YD	78	78
50102400	CONCRETE REMOVAL	CU YD	50	50
50300255	CONCRETE SUPERSTRUCTURE	CU YD	44	44
50800205	REINFORCEMENT BARS, EPOXY COATED	POUND	8190	8190
50800515	BAR SPLICERS	EACH	32	32
50800530	MECHANICAL SPLICERS	EACH	192	192
67100100	MOBILIZATION	L SUM	1	1
70300100	SHORT TERM PAVEMENT MARKING	FOOT	594	594
70300150	SHORT TERM PAVEMENT MARKING REMOVAL	SQ FT	196	196
70300220	TEMPORARY PAVEMENT MARKING - LINE 4"	FOOT	5908	5908
70400100	TEMPORARY CONCRETE BARRIER	FOOT	725	725
70400200	RELOCATE TEMPORARY CONCRETE BARRIER	FOOT	700	700
70600250	IMPACT ATTENUATORS, TEMPORARY (NON- REDIRECTIVE), TEST LEVEL 3	EACH	2	2
70600350	IMPACT ATTENUATORS, RELOCATE (NON- REDIRECTIVE), TEST LEVEL 3	EACH	2	2

14

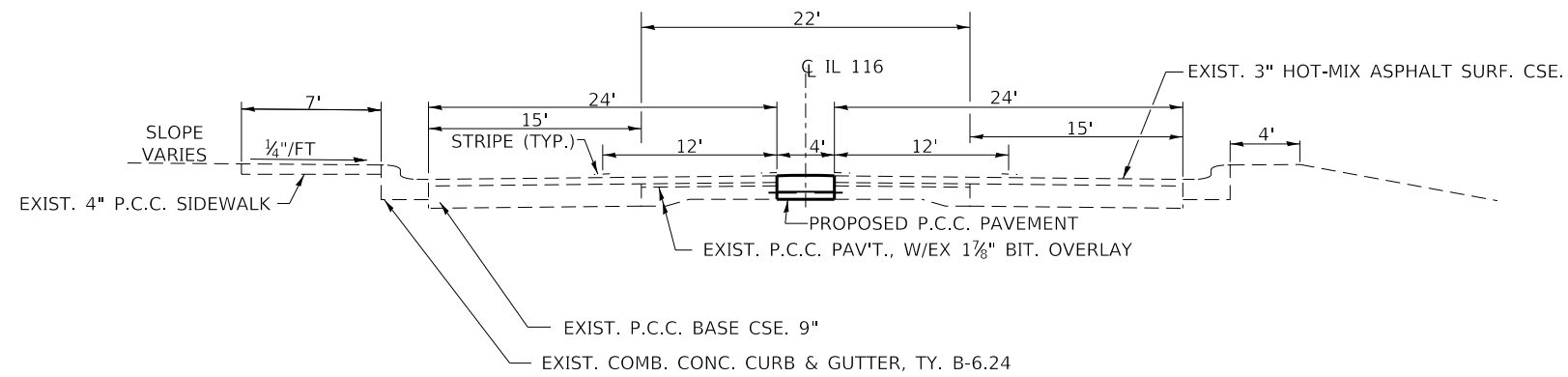
CODE NO.	ITEM	UNIT	TOTAL QUANTITY	CONSTRUCTION CODE	
				CONTRACT MAINTENANCE	
				100% STATE BRIDGE	
				0047	
				S.N. 053-0066	
* 78009004	MODIFIED URETHANE PAVEMENT MARKING - LINE 4"	FOOT	4068	4068	
* 78009006	MODIFIED URETHANE PAVEMENT MARKING - LINE 6"	FOOT	500	500	
* 78009012	MODIFIED URETHANE PAVEMENT MARKING - LINE 12"	FOOT	226	226	
X0327980	PAVEMENT MARKING REMOVAL - WATER BLASTING	SQ FT	3540	3540	
X4403700	MEDIAN REMOVAL (SPECIAL)	SQ FT	444	444	
X6060500	CORRUGATED MEDIAN REMOVAL	SQ FT	252	252	
X6060714	CONCRETE MEDIAN. (SPECIAL)	SQ FT	696	696	
X7010232	TRAFFIC CONTROL AND PROTECTION, STANDARD 701606, SPECIAL	L SUM	1	1	
X7200201	WIDTH RESTRICTION SIGNING	L SUM	1	1	
Z0012754	STRUCTURAL REPAIR OF CONCRETE (DEPTH EQUAL TO OR LESS THAN 5 INCHES)	SQ FT	507	507	
Z0016002	DECK SLAB REPAIR (FULL DEPTH, TYPE II)	SQ YD	4	4	
Z0016200	DECK SLAB REPAIR (PARTIAL)	SQ YD	3.3	3.3	
Z0030850	TEMPORARY INFORMATION SIGNING	SQ FT	42	42	

* SPECIALTY ITEMS



IL 116

EXISTING TYPICAL SECTION
STA. 146+73 TO STA. 149+01 RT.



IL 116

PROPOSED TYPICAL SECTION
STA. 146+73 TO STA. 149+01 RT.

FILE NAME =	USER NAME = woodyetjp	DESIGNED - RW	REVISED -	STATE OF ILLINOIS DEPARTMENT OF TRANSPORTATION	TYPICAL SECTIONS			F.A.P. RTE.	SECTION	COUNTY	TOTAL SHEETS	SHEET NO.
pw:\IL084EBIDINTEG\ilnotes.gov\PWIDOT\Documents\DOT Offices\District 3\Projects\0366\02\CADData\66J02-details.dgn	DRAWN - RW	REVISIED -	673					(112X-BR)BRR	LIVINGSTON	19	5	
Default	PLOT SCALE = 100.0000' / in.	CHECKED - EP	REVISIED -		CONTRACT NO. 66J02							
	PLOT DATE = 3/26/2018	DATE - 2/22/2018	REVISIED -		SCALE:	SHEET 1	OF 1	SHEETS	STA.	TO STA.	ILLINOIS	FED. AID PROJECT

SCHEDULE - PAVEMENT MARKING

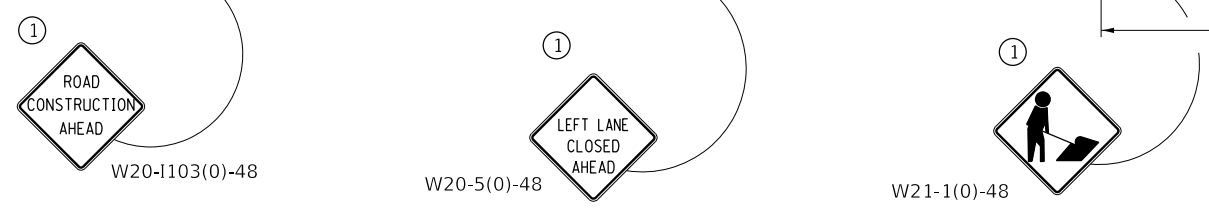
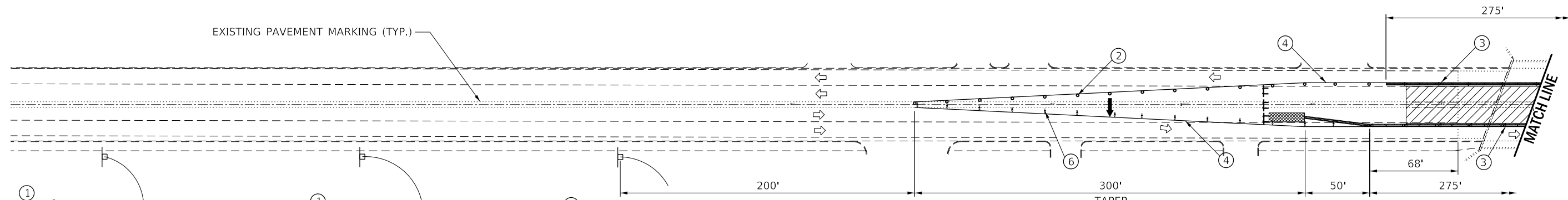
LOCATION	PAVEMENT MARKING REMOVAL WATERBLASTING		SHORT TERM PAVEMENT MARKING REMOVAL	SHORT TERM PAVEMENT MARKING		TEMPORARY PAVEMENT MARKING LINE 4"		MODIFIED URETHANE PAVEMENT MARKING LINE 4"		MODIFIED URETHANE PAVEMENT MARKING LINE 6"	MODIFIED URETHANE PAVEMENT MARKING LINE 12"
	SQ FT		SQ FT	FOOT		FOOT		FOOT		FOOT	FOOT
	EXISTING	TEMPORARY		YELLOW	WHITE	YELLOW	WHITE	YELLOW	WHITE	WHITE	YELLOW
STAGE I	1590	654					1982				
STAGE II		1296	196	396	198	1980	1946	3836	232	500	226
TOTALS	3540		196	594		5908		4068		500	226

SCHEDULE - TEMPORARY CONCRETE BARRIER

LOCATION		TEMPORARY CONCRETE BARRIER	RELOCATE TEMPORARY CONCRETE BARRIER
		FOOT	FOOT
STAGE I	EASTBOUND	325	
	WESTBOUND	375	
STAGE II	EASTBOUND		325
	WESTBOUND		375
TOTALS		700	700

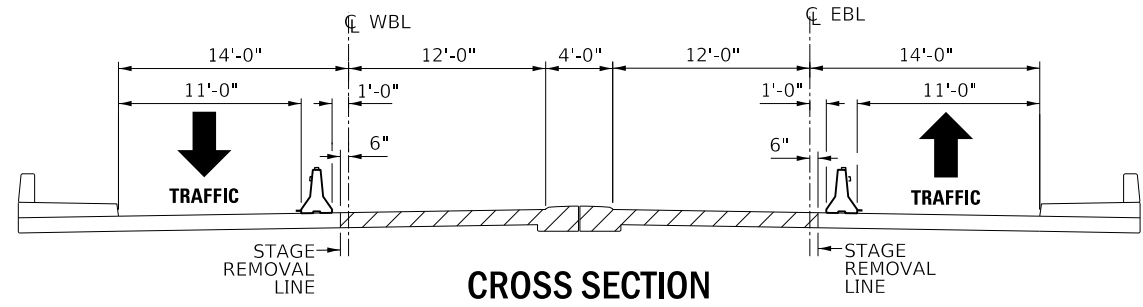
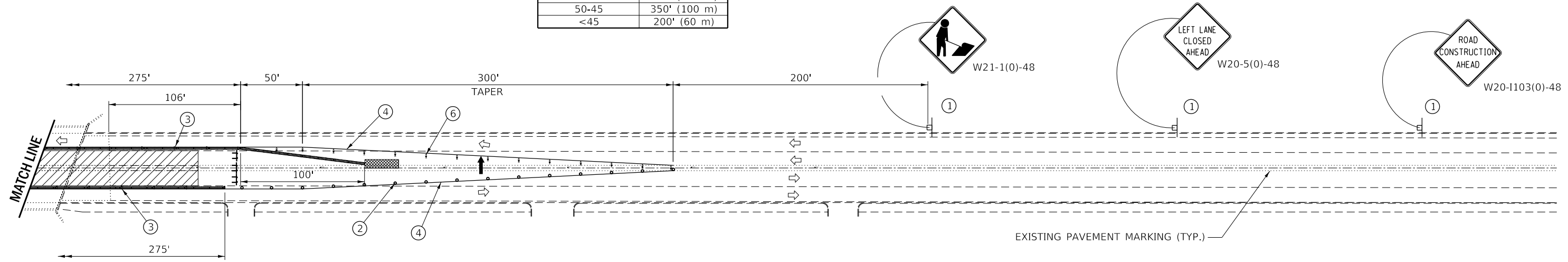
SCHEDULE - MEDIAN

LOCATION			MEDIAN REMOVAL (SPECIAL)	CORRUGATED MEDIAN REMOVAL	WELDED WIRE REINFORCEMENT	CONCRETE MEDIAN (SPECIAL)
STA.	TO	STA.	SQ FT	SQ FT	SQ YD	SQ FT
146+73	TO	147+13	160		18	160
147+13	TO	147+46		132	15	132
148+00	TO	148+30		120	13	120
148+30	TO	149+01	284		32	284
TOTALS			444	252	78	696



- ① REFER TO SIGN SPACING TABLE FOR DISTANCES.
- ② DRUMS OR FLEXIBLE DELINEATORS AT 20' CENTERS.
- ③ BARRIER WALL REFLECTORS AT 20' CENTERS (TANGENT ONLY)
- ④ TEMPORARY PAVEMENT MARKING LINE 4" (WHITE)
- ⑤ TEMPORARY PAVEMENT MARKING LINE DOUBLE 4" (YELLOW)
- ⑥ DIRECTION INDICATOR BARRICADE WITH STEADY BURNING LIGHT
ARROWS ON THE BACKSIDE OF THE BARRICADES SHALL BE COVERED OR REMOVED

SIGN SPACING	
Posted Speed	Sign Spacing
55	500' (150 m)
50-45	350' (100 m)
<45	200' (60 m)



SYMBOLS

- ARROW BOARD
- FLEXIBLE DELINEATOR
- DRUM
- SIGN ON PORTABLE OR PERMANENT SUPPORT
- WORK AREA
- BARRICADE OR DRUM WITH FLASHING LIGHT
- TEMPORARY CONCRETE BARRIER
- TYPE III BARRICADE
- BARRIER WALL REFLECTORS
- TEMPORARY IMPACT ATTENUATORS
- DIRECTION INDICATOR BARRICADES (ON TAPERS)

GENERAL NOTES

THIS STANDARD IS USED WHERE AT ANY TIME, DAY OR NIGHT, ANY VEHICLE, EQUIPMENT, WORKERS OR THEIR ACTIVITIES ENCRUCH ON THE PAVEMENT REQUIRING THE CLOSURE OF ONE TRAFFIC LANE IN AN URBAN AREA.

CALCULATE L AS FOLLOWS:

SPEED LIMIT	FORMULAS
40 MPH (70 KM/H) OR LESS:	English (Metric)
	$L = \frac{WS^2}{60}$ $L = \frac{WS^2}{150}$
45 MPH (80 KM/H) OR GREATER:	$L = (W)(S)$ $L = 0.65(W)(S)$

W = WIDTH OF OFFSET IN FEET (METERS).

S = NORMAL POSTED SPEED MPH (KM/H).

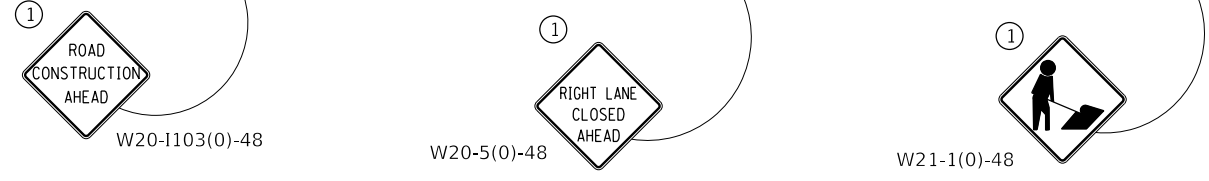
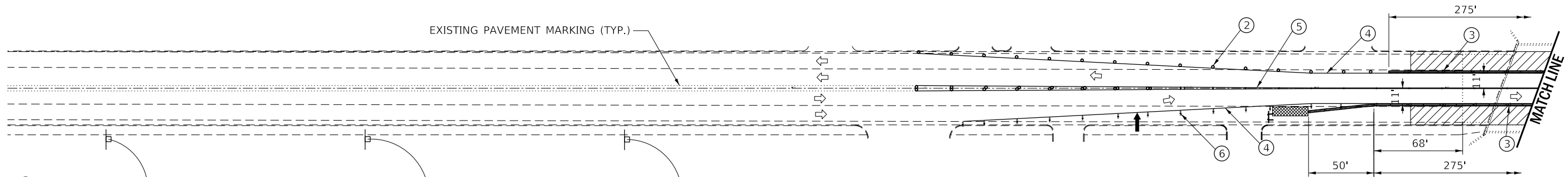
ALL DIMENSIONS ARE IN INCHES (MILLIMETERS) UNLESS OTHERWISE SHOWN.

FILE NAME =	USER NAME = woodyetjp	DESIGNED - RW	REVISED -
pw:\IL084EBID\INTEG\ilnotes.gov\PWIDOT\Documents\DOT Offices\District 3\Projects\0368\02\CADData\66J02-details.dgn		DRAWN - RW	REVISED -
Default	PLOT SCALE = 100.0000' / in.	CHECKED - EP	REVISED -
	PLOT DATE = 3/27/2018	DATE - 2/22/2018	REVISED -

**STATE OF ILLINOIS
DEPARTMENT OF TRANSPORTATION**

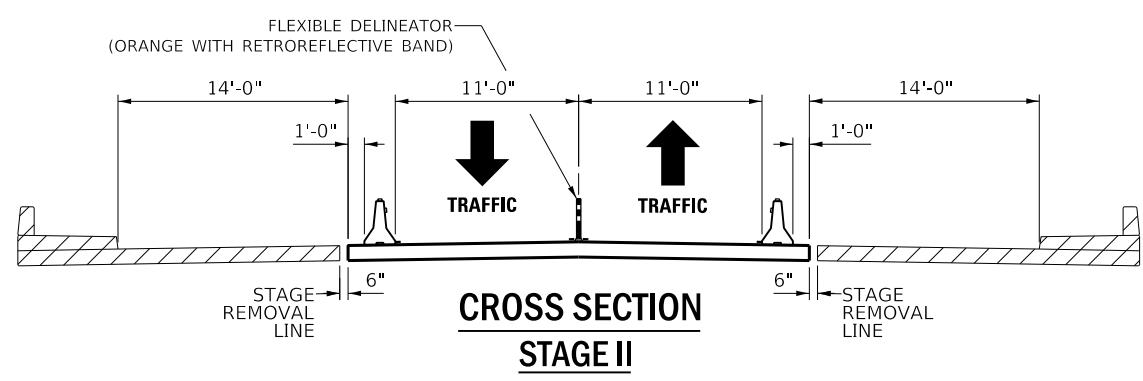
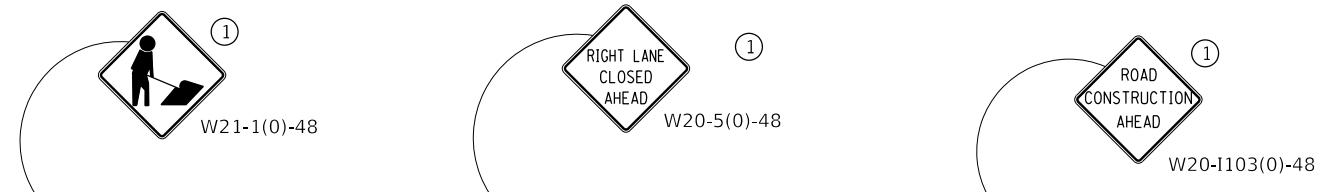
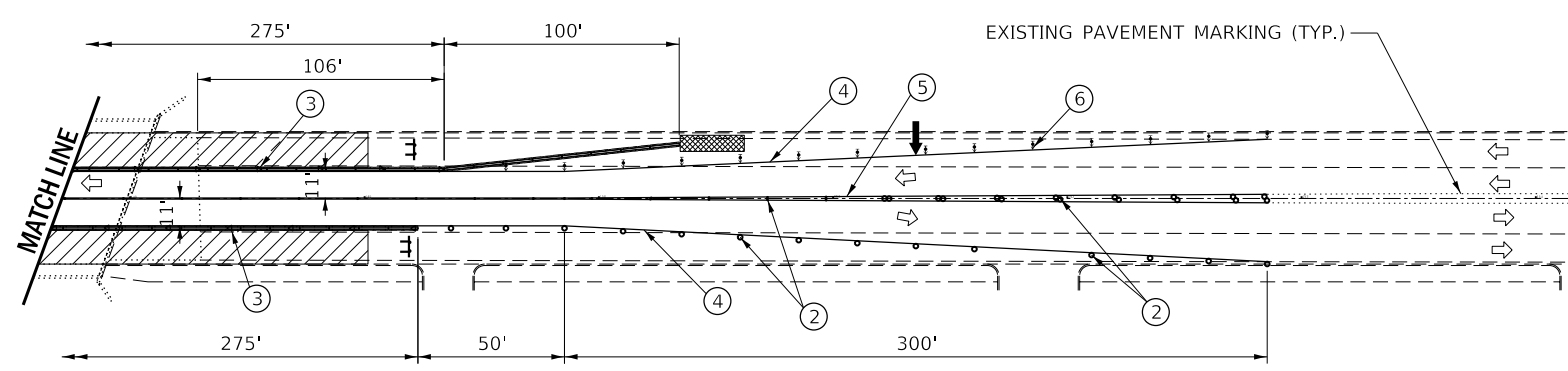
TRAFFIC CONTROL AND PROTECTION, STANDARD 701606 (SPECIAL) - STAGE I			
SCALE:	SHEET 1	OF 1	SHEETS
	STA.	TO STA.	

F.A.P. RTE. 673	SECTION (112X-BR)BRR	COUNTY LIVINGSTON	TOTAL SHEETS 19	SHEET NO. 7
CONTRACT NO. 66J02				
ILLINOIS		FED. AID PROJECT		



- ① REFER TO SIGN SPACING TABLE FOR DISTANCES.
- ② DRUMS OR FLEXIBLE DELINEATORS AT 20' CENTERS.
- ③ BARRIER WALL REFLECTORS AT 20' CENTERS (TANGENT ONLY)
- ④ TEMPORARY PAVEMENT MARKING LINE 4" (WHITE)
- ⑤ TEMPORARY PAVEMENT MARKING LINE DOUBLE 4" (YELLOW)
- ⑥ DIRECTION INDICATOR BARRICADE WITH STEADY BURNING LIGHT
ARROWS ON THE BACKSIDE OF THE BARRICADES SHALL BE COVERED OR REMOVED

SIGN SPACING	
Posted Speed	Sign Spacing
55	500' (150 m)
50-45	350' (100 m)
<45	200' (60 m)



- ### SYMBOLS
- ARROW BOARD
 - FLEXIBLE DELINEATOR
 - DRUM OR FLEXIBLE DELINEATOR
 - SIGN ON PORTABLE OR PERMANENT SUPPORT
 - WORK AREA
 - BARRICADE OR DRUM WITH FLASHING LIGHT
 - TEMPORARY CONCRETE BARRIER
 - TYPE III BARRICADE
 - BARRIER WALL REFLECTORS
 - TEMPORARY IMPACT ATTENUATORS
 - DIRECTION INDICATOR BARRICADES (ON TAPERS)

GENERAL NOTES

THIS STANDARD IS USED WHERE AT ANY TIME, DAY OR NIGHT, ANY VEHICLE, EQUIPMENT, WORKERS OR THEIR ACTIVITIES ENCR OACH ON THE PAVEMENT REQUIRING THE CLOSURE OF ONE TRAFFIC LANE IN AN URBAN AREA.

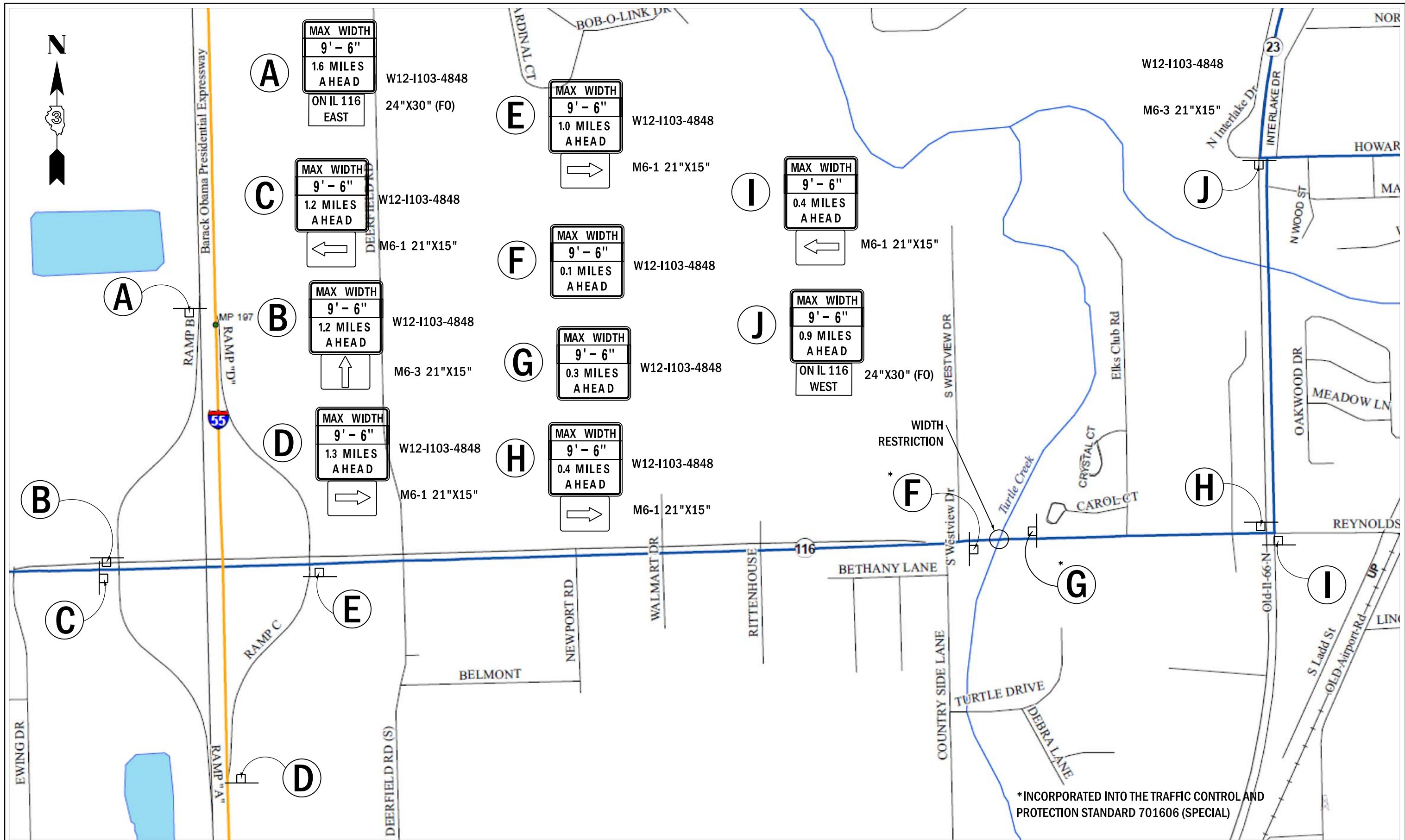
CALCULATE L AS FOLLOWS:

SPEED LIMIT	FORMULAS
40 MPH (70 KM/H) OR LESS:	English (Metric)
	$L = \frac{WS^2}{60}$ $L = \frac{WS^2}{150}$
45 MPH (80 KM/H) OR GREATER:	$L = (W)(S)$ $L = 0.65(W)(S)$

W = WIDTH OF OFFSET IN FEET (METERS).

S = NORMAL POSTED SPEED MPH (KM/H).

ALL DIMENSIONS ARE IN INCHES (MILLIMETERS) UNLESS OTHERWISE SHOWN.



*INCORPORATED INTO THE TRAFFIC CONTROL AND PROTECTION STANDARD 701606 (SPECIAL)

FILE NAME =	USER NAME = woodyetjp	DESIGNED - RW	REVISED -
pw:\IL084EBID\INTEG\ifnotes.gov\PWIDOT\Documents\DOT Offices\District 3\Projects\0368\J02\CADData\66J02-details.dgn		DRAWN - RW	REVISED -
Default	PLOT SCALE = 100.0000' / in.	CHECKED - EP	REVISED -
	PLOT DATE = 3/26/2018	DATE - 2/22/2018	REVISED -

STATE OF ILLINOIS
DEPARTMENT OF TRANSPORTATION

WIDTH RESTRICTION SIGNING

SCALE: SHEET 1 OF 1 SHEETS STA. TO STA.

F.A.P. RTE. 673	SECTION (112X-BR)BR	COUNTY LIVINGSTON	TOTAL SHEETS 19	SHEET NO. 9
ILLINOIS FED. AID PROJECT			CONTRACT NO. 66J02	



STA. 143+27

6" WHITE (SKIP-DASH)

4" DOUBLE YELLOW

12" YELLOW (DIAGONALS)

4" WHITE

143

144

145+00

146

147

MATCH LINE

4" DOUBLE YELLOW

6" WHITE (SKIP-DASH)

4" WHITE



4" WHITE

6" WHITE (SKIP-DASH)

12" YELLOW (DIAGONALS)

4" DOUBLE YELLOW

STA. 152+85

148

149

150+00

151

152

153

MATCH LINE

4" WHITE

4" DOUBLE YELLOW

6" WHITE (SKIP-DASH)

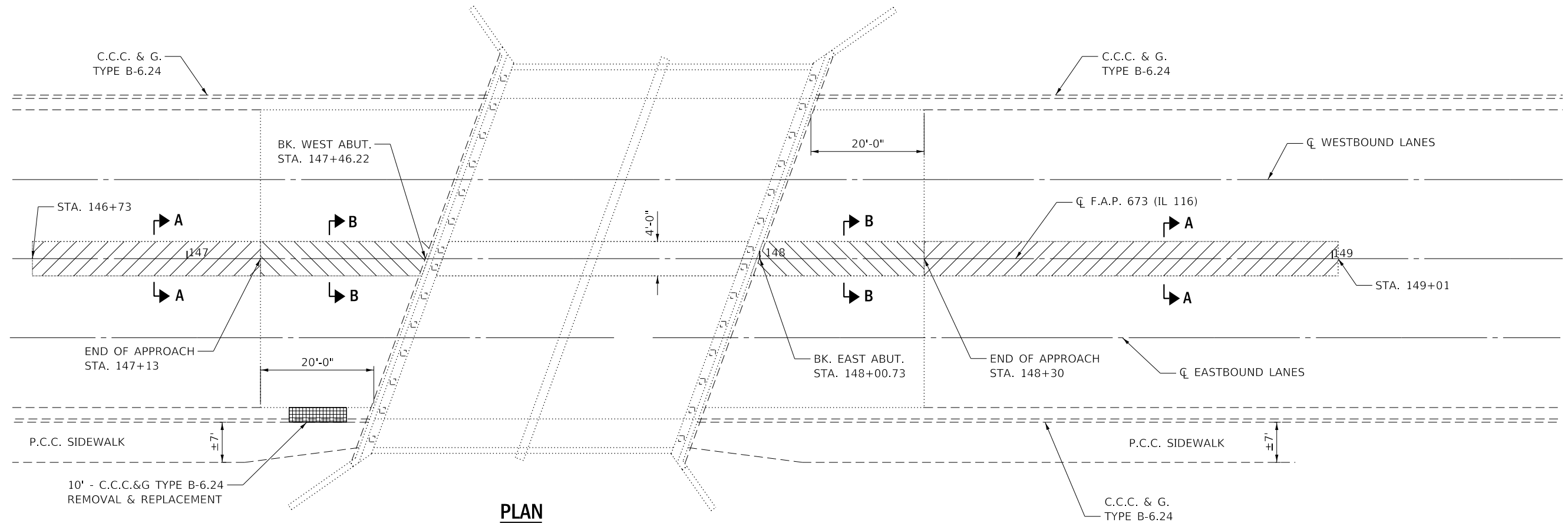
FILE NAME =	USER NAME = woodyetjp	DESIGNED - RW	REVISED -
pw:\IL084EBIDINTEG\flnotes.gov\PWIDOT\Documents\DOT Offices\District 3\Projects\0366\J02\CADDData\66J02-details.dgn		DRAWN - RW	REVISED -
Default	PLOT SCALE = 100.0000' / in.	CHECKED - EP	REVISED -
	PLOT DATE = 3/26/2018	DATE - 2/22/2018	REVISED -

**STATE OF ILLINOIS
DEPARTMENT OF TRANSPORTATION**

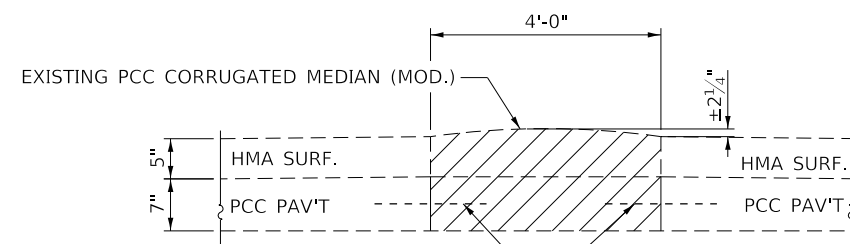
PAVEMENT MARKING DETAILS

SCALE: SHEET 1 OF 1 SHEETS STA. TO STA.

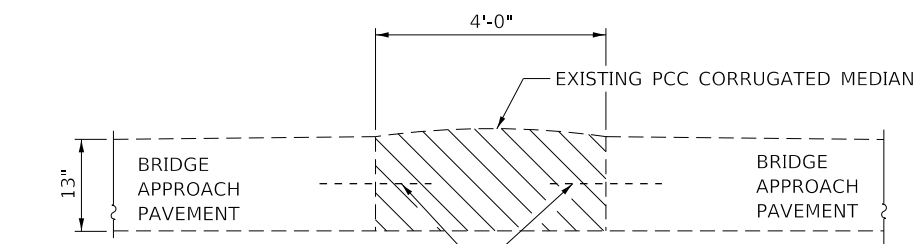
F.A.P. RTE.	SECTION	COUNTY	TOTAL SHEETS	SHEET NO.
673	(112X-BR)BRR	LIVINGSTON	19	10
CONTRACT NO. 66J02				
ILLINOIS		FED. AID PROJECT		



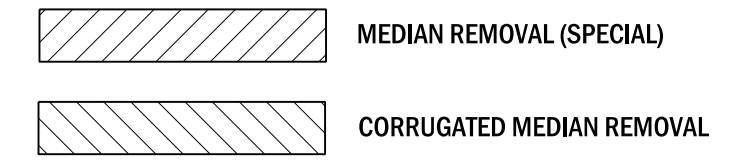
PLAN
STRUCTURE NO. 053-0066



EXISTING SECTION A-A

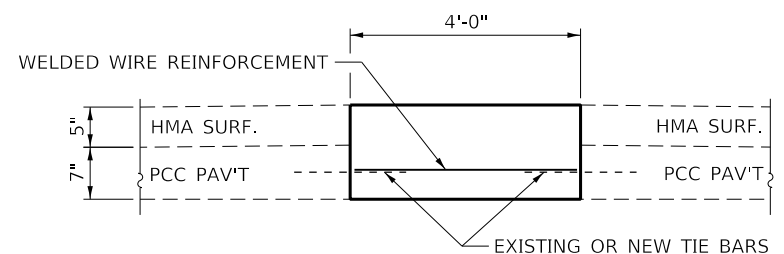


EXISTING SECTION B-B

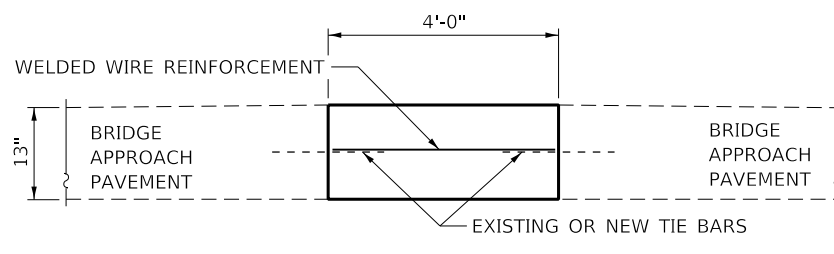


EXISTING TIE BARS SHALL BE CLEANED AND INCORPORATED INTO THE NEW CONSTRUCTION (TYP.) IF THE EXISTING TIE BARS ARE DAMAGED OR DETERIORATED, THEY SHALL BE REMOVED AND REPLACED WITH #6X30" EPOXY COATED TIE BARS. COST OF REPLACING TIE BARS SHALL BE PAID FOR ACCORDING TO ARTICLE 109.04 OF THE STANDARD SPECIFICATIONS.

EXISTING TIE BARS SHALL BE CLEANED AND INCORPORATED INTO THE NEW CONSTRUCTION (TYP.) IF THE EXISTING TIE BARS ARE DAMAGED OR DETERIORATED, THEY SHALL BE REMOVED AND REPLACED WITH #6X30" EPOXY COATED TIE BARS. COST OF REPLACING TIE BARS SHALL BE PAID FOR ACCORDING TO ARTICLE 109.04 OF THE STANDARD SPECIFICATIONS.

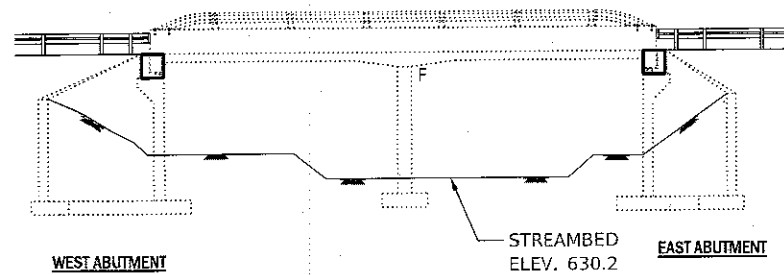


PROPOSED SECTION A-A

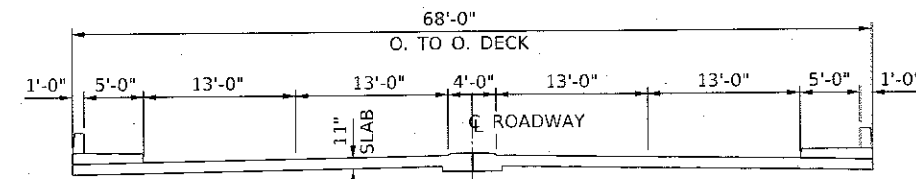


PROPOSED SECTION B-B

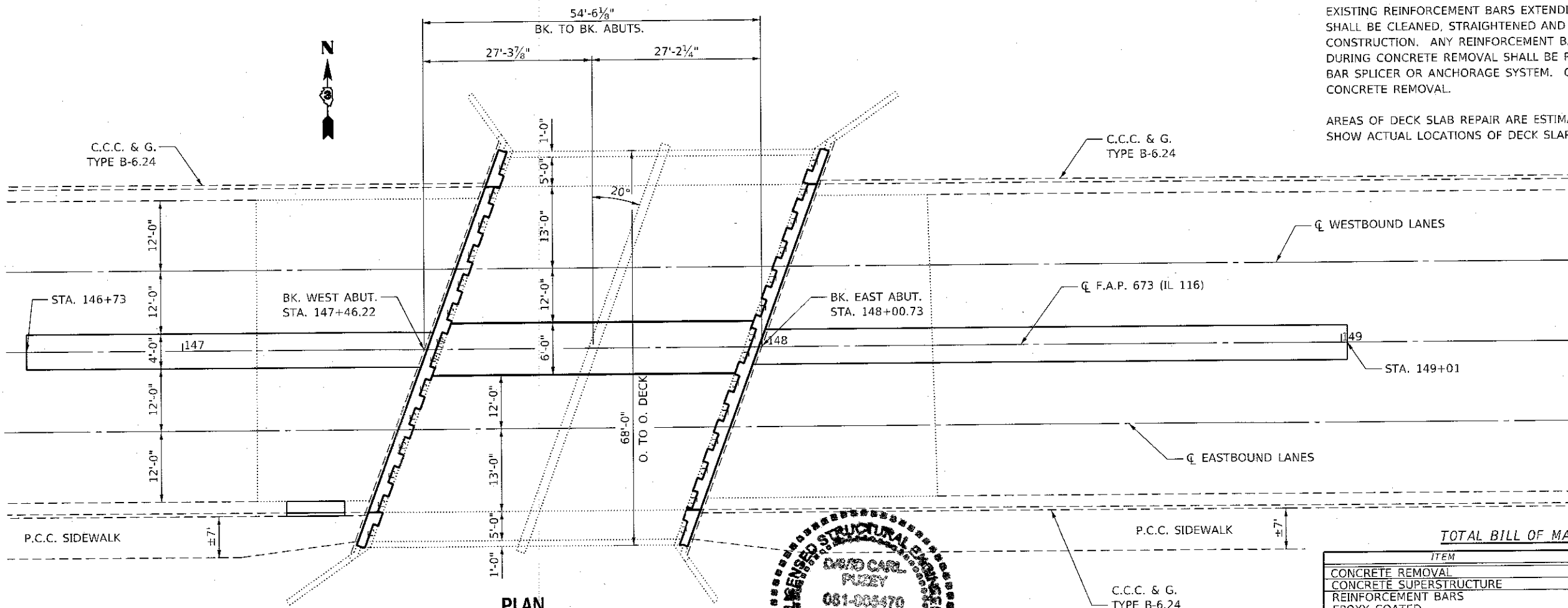
FILE NAME =	USER NAME = woodyetjp	DESIGNED - RW	REVISED -	STATE OF ILLINOIS DEPARTMENT OF TRANSPORTATION	MEDIAN DETAILS			F.A.P. RTE. 673	SECTION (112X-BR)BRR	COUNTY LIVINGSTON	TOTAL SHEETS 19	SHEET NO. 11
Default	PLOT SCALE = 100.0000' / in.	CHECKED - EP	REVISED -					SCALE:	SHEET 1	OF 1	SHEETS	STA.
	PLOT DATE = 3/26/2018	DATE - 2/22/2018	REVISED -		ILLINOIS FED. AID PROJECT							



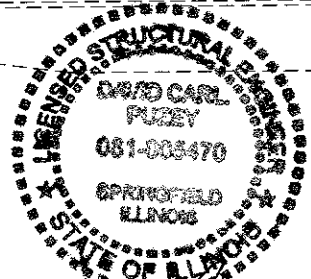
ELEVATION



CROSS SECTION



PLAN
STRUCTURE NO. 053-0066



David Carl Puzey 5/8/18
Expires 11/30/18

GENERAL NOTES

PLAN DIMENSIONS AND DETAILS RELATIVE TO EXISTING PLANS ARE SUBJECT TO NOMINAL CONSTRUCTION VARIATIONS. THE CONTRACTOR SHALL FIELD VERIFY EXISTING DIMENSIONS AND DETAILS AFFECTING NEW CONSTRUCTION AND MAKE NECESSARY APPROVED ADJUSTMENTS PRIOR TO CONSTRUCTION OR ORDERING OF MATERIALS. SUCH VARIATIONS SHALL NOT BE CAUSE FOR ADDITIONAL COMPENSATION FOR A CHANGE IN SCOPE OF WORK; HOWEVER, THE CONTRACTOR WILL BE PAID FOR THE QUANTITY ACTUALLY FURNISHED AT THE UNIT PRICE BID FOR THE WORK.

REINFORCEMENT BARS DESIGNATED (E) SHALL BE EPOXY COATED.

PRIOR TO POURING THE NEW CONCRETE DECK, ALL HEAVY OR LOOSE RUST, LOOSE MILL SCALE, AND OTHER LOOSE OR POTENTIALLY DETRIMENTAL FOREIGN MATERIAL SHALL BE REMOVED FROM THE SURFACES IN CONTACT WITH CONCRETE. TIGHTLY ADHERED PAINT MAY REMAIN UNLESS OTHERWISE NOTED. REMOVAL SHALL BE ACCOMPLISHED BY METHODS THAT WILL NOT DAMAGE THE STEEL AND THE COST WILL BE INCLUDED IN THE PAY ITEM COVERING REMOVAL OF THE EXISTING CONCRETE.

PROTECTIVE COAT SHALL BE APPLIED TO ALL "NEW" CONCRETE SURFACES.

EXISTING REINFORCEMENT BARS EXTENDING INTO THE REMOVAL AREA SHALL BE CLEANED, STRAIGHTENED AND INCORPORATED INTO THE NEW CONSTRUCTION. ANY REINFORCEMENT BARS THAT ARE DAMAGED DURING CONCRETE REMOVAL SHALL BE REPLACED WITH AN APPROVED BAR SPLICER OR ANCHORAGE SYSTEM. COST INCLUDED WITH CONCRETE REMOVAL.

AREAS OF DECK SLAB REPAIR ARE ESTIMATED. THE ENGINEER SHALL SHOW ACTUAL LOCATIONS OF DECK SLAB REPAIRS ON AS-BUILT PLANS.

TOTAL BILL OF MATERIAL

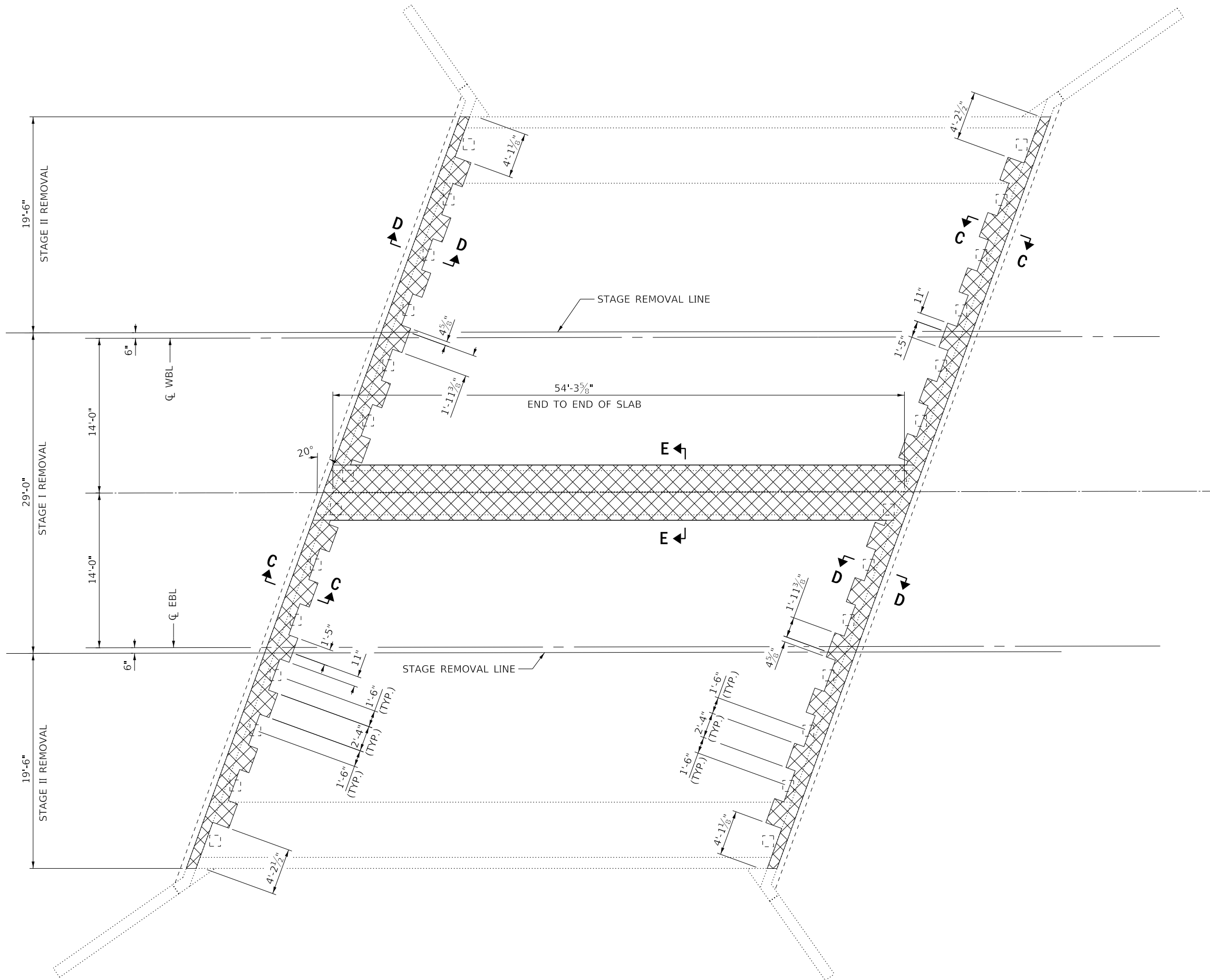
ITEM	UNIT	SUPER	SUB	TOTAL
CONCRETE REMOVAL	CU YD	39	11	50
CONCRETE SUPERSTRUCTURE	CU YD	44		44
REINFORCEMENT BARS EPOXY COATED	POUND	8190		8190
BAR SPLICER	EACH	32		32
STRUCTUREAL REPAIR OF CONCRETE (DEPTH EQUAL TO OR LESS THAN 5")	SQ FT		507	507
DECK SLAB REPAIR (PARTIAL)	SQ YD	3.3		3.3
DECK SLAB REPAIR (FULL DEPTH, TYPE II)	SQ YD	4		4
MECHANICAL SPLICERS	EACH	192		192

FILE NAME =	USER NAME = woodyarj	DESIGNED - RW	REVISED -
pw:\11084EBID\INTEG\Illinois.gov\PWIDOT\Documents\DOT Offices\District 9\Projects\0395\02\CAD\Drawings\02-details.dgn		DRAWN - RW	REVISED -
	PLOT SCALE = 1/80,000 1/4" = 1'	CHECKED - EP	REVISED -
Default	PLOT DATE = 3/28/2018	DATE = 2/22/2018	REVISED -

STATE OF ILLINOIS
DEPARTMENT OF TRANSPORTATION

GENERAL PLAN AND ELEVATION			
STRUCTURE NO. 053-0066			
SCALE:	SHEET 1	OF 7 SHEETS	STA. 147+46.22 TO STA. 148+00.73

F.A.P. RTE.	SECTION	COUNTY	TOTAL SHEETS	SHEET NO.
673	(112X-BR)BRR	LIVINGSTON	19	12
			CONTRACT NO. 66J02	
ILLINOIS FED. AID PROJECT				



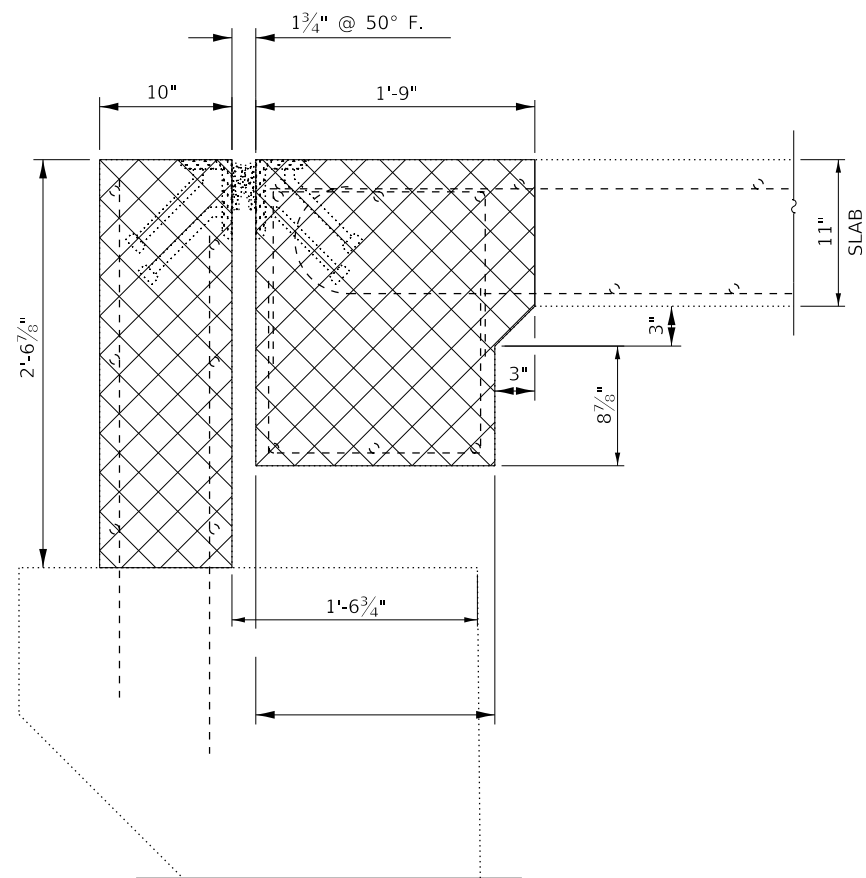
FILE NAME =	USER NAME = woodyetjp	DESIGNED - RW	REVISED -
pw:\IL084EBID\INTEG\ifnotes\gov\PWIDOT\Documents\DOT Offices\District 3\Projects\0366\02\CADDData\66J02-details.dgn		DRAWN - RW	REVISED -
Default	PLOT SCALE = 100.0000' / in.	CHECKED - EP	REVISED -
	PLOT DATE = 3/26/2018	DATE - 2/22/2018	REVISED -

**STATE OF ILLINOIS
DEPARTMENT OF TRANSPORTATION**

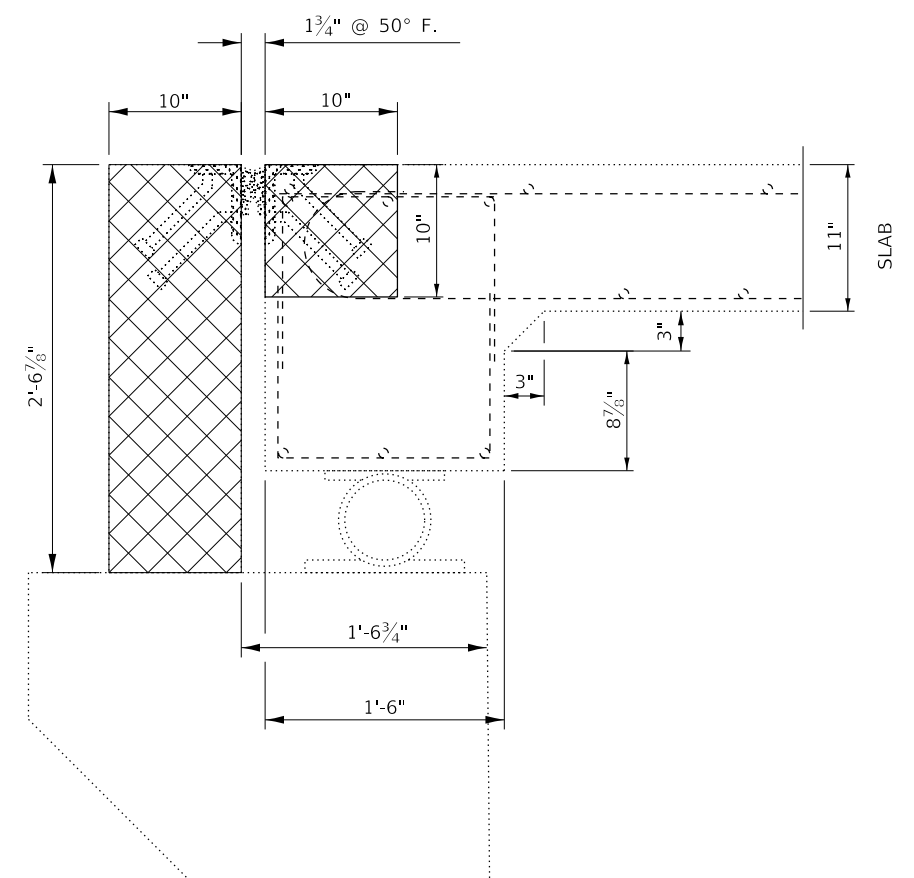
SUPERSTRUCTURE REMOVAL DETAILS

SCALE: SHEET 2 OF 7 SHEETS STA. 147+46.22 TO STA. 148+00.73

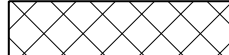
F.A.P. RTE.	SECTION	COUNTY	TOTAL SHEETS	SHEET NO.
673	(112X-BR)BRR	LIVINGSTON	19	13
CONTRACT NO. 66J02				
		ILLINOIS	FED. AID PROJECT	

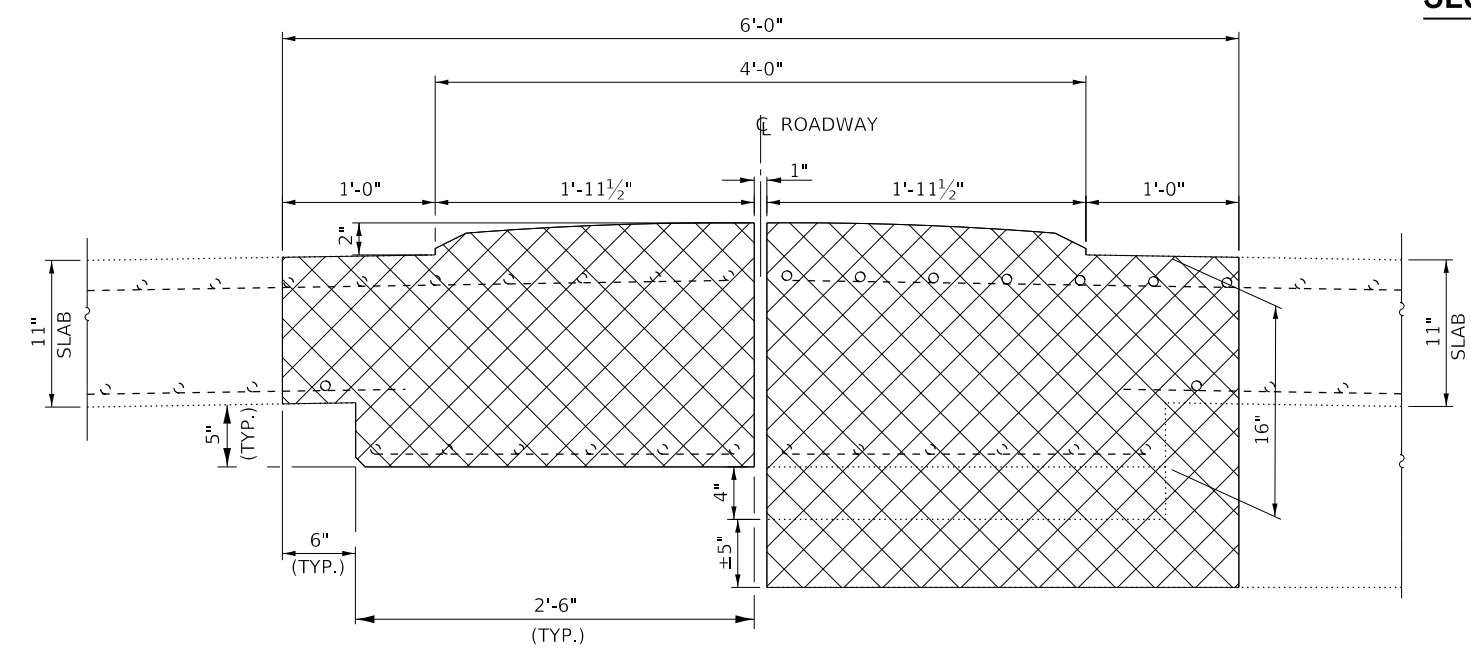


SECTION C-C



SECTION D-D

 **CONCRETE REMOVAL**



AT MID SPAN

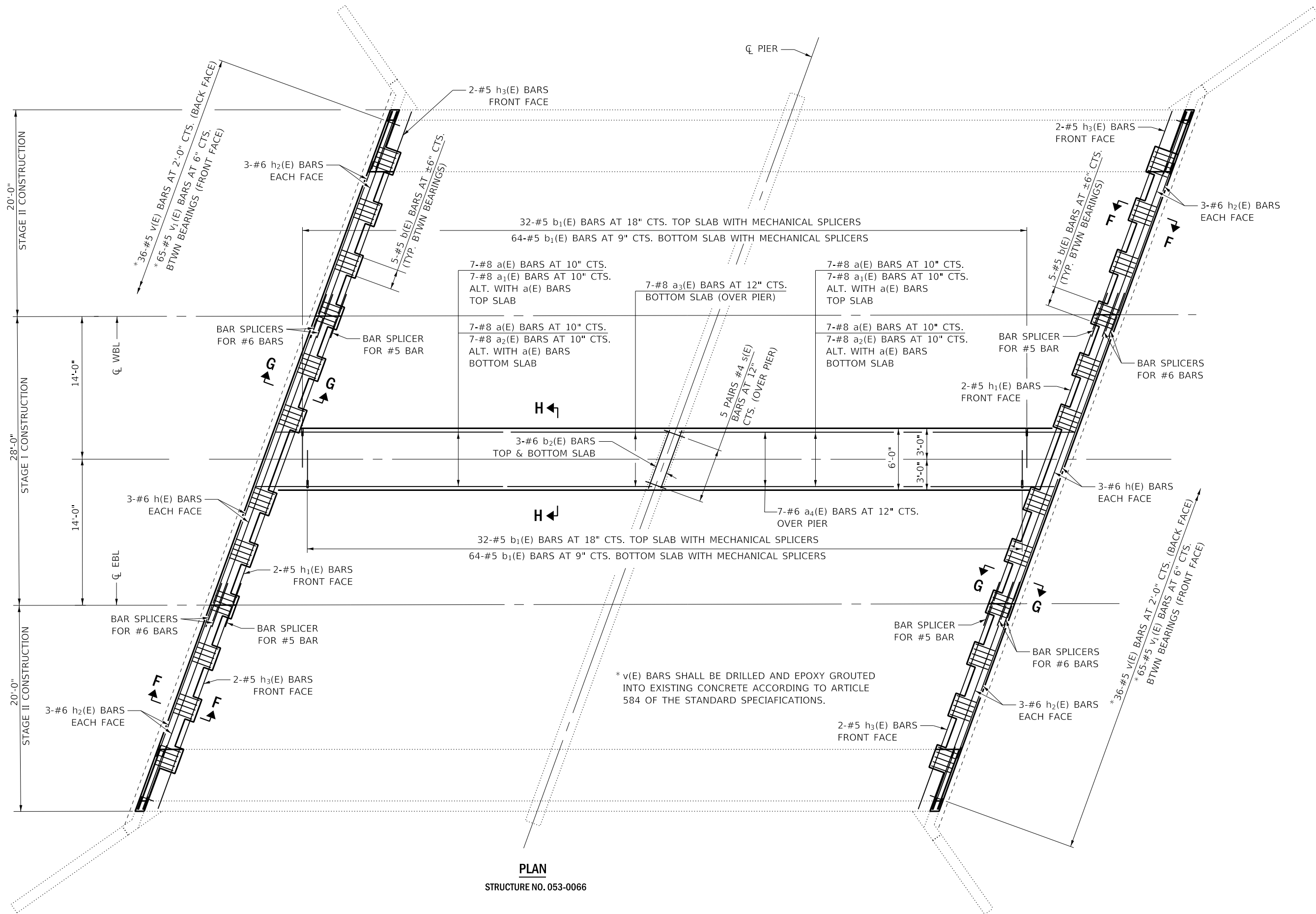
SECTION E-E

AT PIER

NOTES:

1. EXISTING TRANSVERSE REINFORCEMENT IN THE MEDIAN REMOVAL AREA SHALL BE CUT A MIN. OF 6" FROM FACE OF CONCRETE REMOVAL LINE, CLEANED AND INCORPORATED INTO THE NEW CONSTRUCTION. LONGITUDINAL REINFORCEMENT SHALL BE REMOVED AND REPLACED.
2. COST OF REMOVING EXISTING EXPANSION JOINT MATERIALS SHALL BE INCLUDE IN "CONCRETE REMOVAL".

FILE NAME =	USER NAME = woodyetjp	DESIGNED - RW	REVISED -	STATE OF ILLINOIS DEPARTMENT OF TRANSPORTATION	SUPERSTRUCTURE REMOVAL DETAILS			F.A.P. RTE.	SECTION	COUNTY	TOTAL SHEETS	SHEET NO.
pw:\IL084EB\INTEG\ifnotes.gov\PWIDOT\Documents\DOT Offices\District 3\Projects\0366\02\CADData\66J02-details.dgn		DRAWN - RW	REVISED -		673	(112X-BR)BRR	LIVINGSTON	19	14			
Default	PLOT SCALE = 100.0000' / in.	CHECKED - EP	REVISED -		CONTRACT NO. 66J02							
	PLOT DATE = 3/28/2018	DATE - 2/22/2018	REVISED -		SCALE:	SHEET 3 OF 7 SHEETS	STA. 147+46.22 TO STA. 148+00.73	ILLINOIS FED. AID PROJECT				



PLAN

STRUCTURE NO. 053-0066

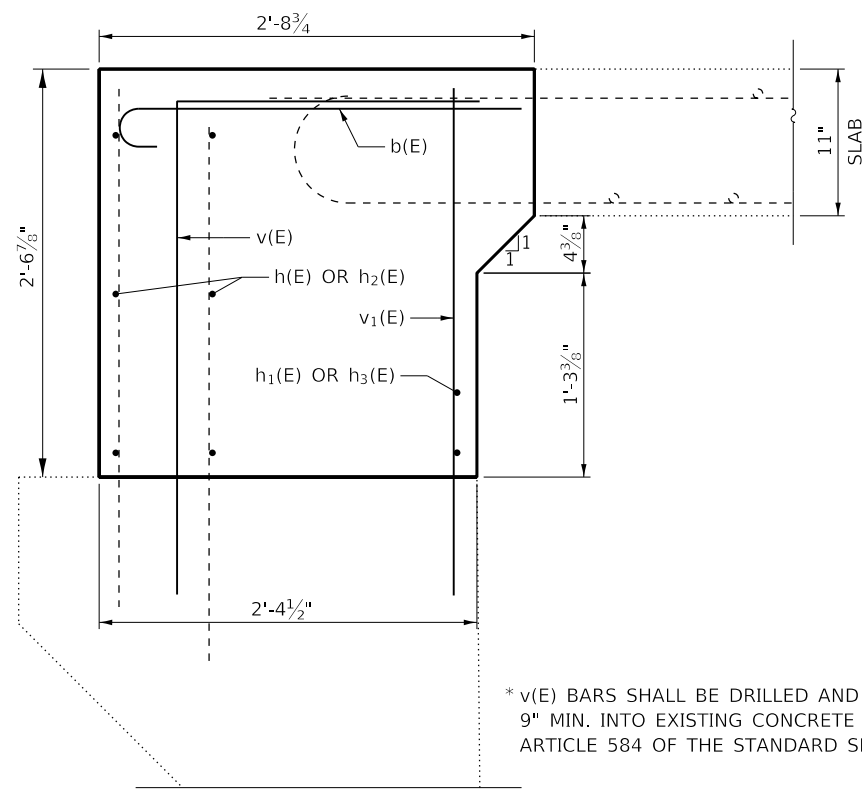
FILE NAME =	USER NAME = woodyetjp	DESIGNED - RW	REVISED -
pw:\IL084EBIDINTEG\ilnotes\gov\PWIDOT\Documents\DOT Offices\District 3\Projects\0366\02\CADData\66J02-details.dgn		DRAWN - RW	REVISED -
Default	PLOT SCALE = 100.0000' / in.	CHECKED - EP	REVISED -
	PLOT DATE = 3/26/2018	DATE - 2/22/2018	REVISED -

**STATE OF ILLINOIS
DEPARTMENT OF TRANSPORTATION**

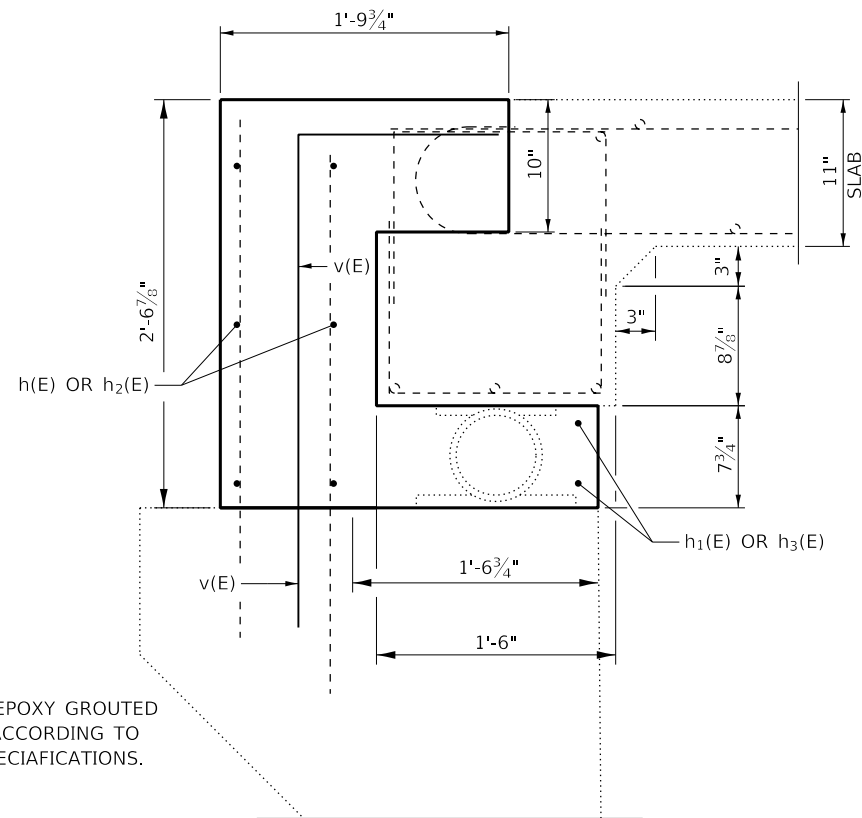
SUPERSTRUCTURE CONSTRUCTION DETAILS

SCALE: SHEET 4 OF 7 SHEETS STA. 147+46.22 TO STA. 148+00.73

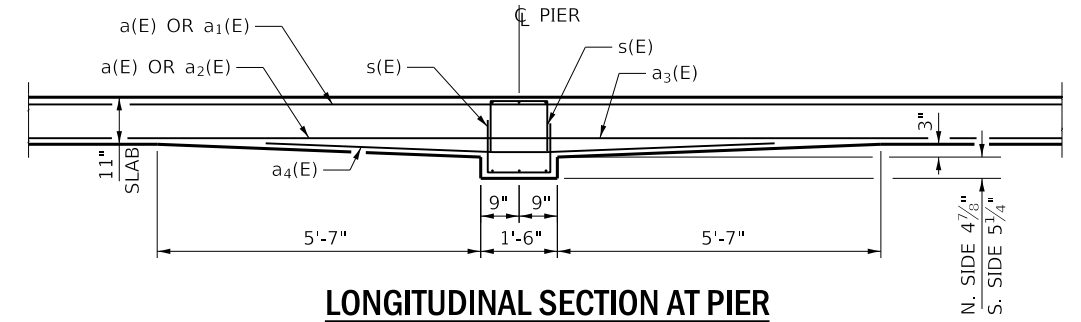
F.A.P. RTE.	SECTION	COUNTY	TOTAL SHEETS	SHEET NO.
673	(112X-BR)BRR	LIVINGSTON	19	15
CONTRACT NO. 66J02				
ILLINOIS FED. AID PROJECT				



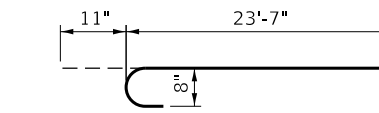
SECTION F-F



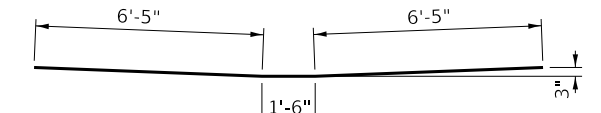
SECTION G-G



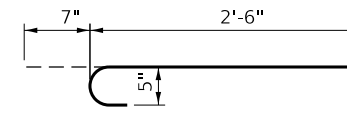
LONGITUDINAL SECTION AT PIER



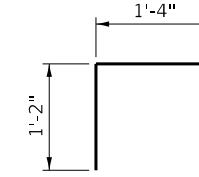
a2(E) BAR



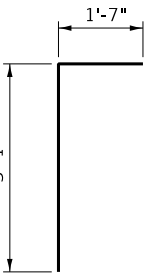
a4(E) BAR



b(E) BAR



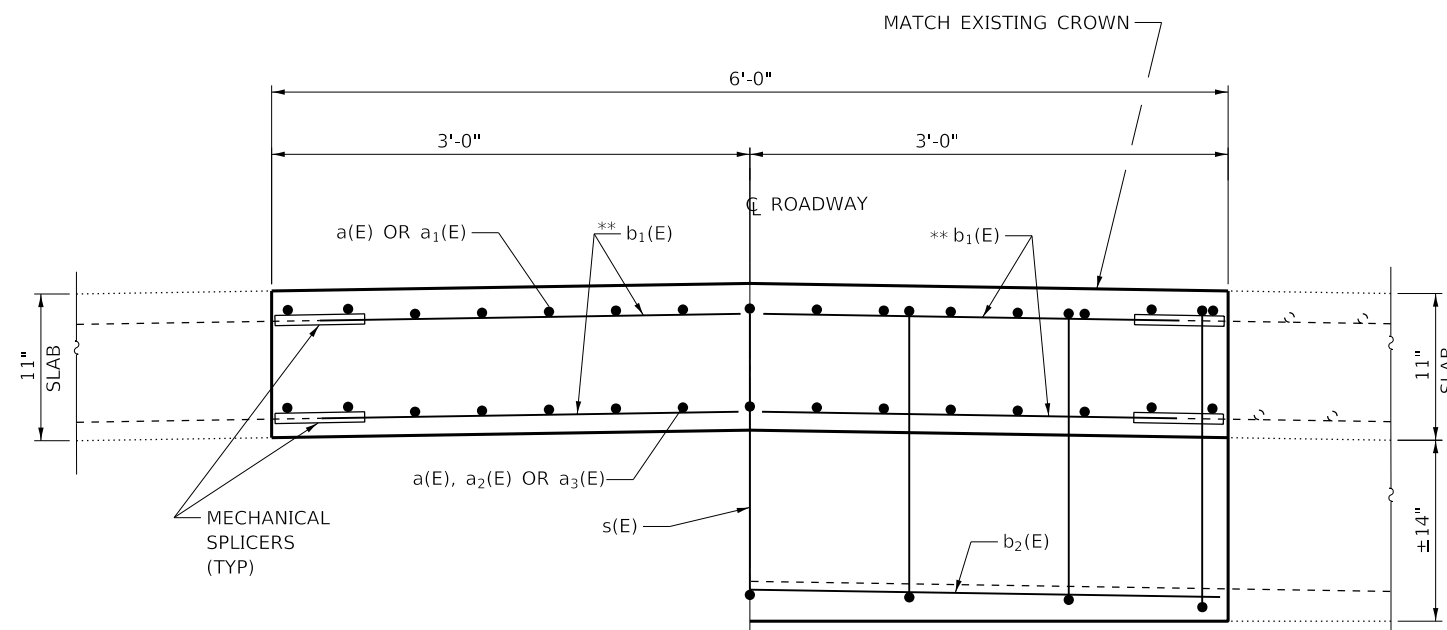
s(E) BAR



v(E) BAR

**SUPERSTRUCTURE
BILL OF MATERIAL**

BAR	NO.	SIZE	LENGTH	SHAPE
a	28	8	31'-4"	
a1	14	8	24'-8"	
a2	14	8	24'-6"	U
a3	7	8	14'-4"	
a4	7	6	14'-4"	
b	120	5	3'-1"	U
b1	192	5	4'-0"	
b2	3	6	6'-1"	
h	12	6	29'-6"	
h1	4	5	29'-6"	
h2	24	6	21'-0"	
h3	8	5	21'-0"	
s	10	4	3'-8"	□
v	72	5	4'-8"	L
v1	130	5	3'-1"	
REINFORCEMENT BARS EPOXY COATED			LBS.	8190
CONCRETE REMOVAL			CU. YD.	50
CONCRETE SUPERSTRUCTURE			CU. YD.	44



AT MID SPAN

SECTION H-H

AT PIER

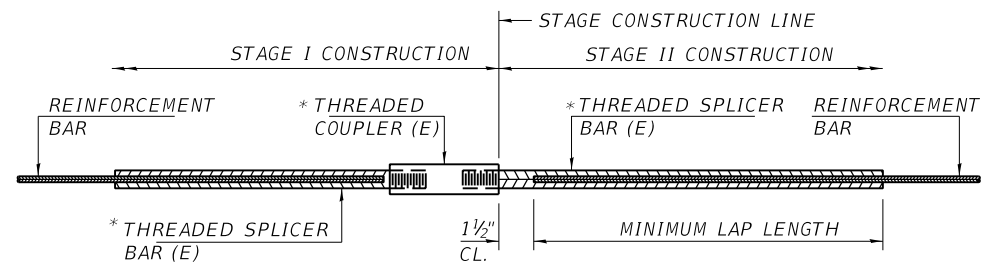
FILE NAME =	USER NAME = woodyetjp	DESIGNED - RW	REVISED -
pw:\IL084EB\INTEG\ifnotes\gov\PWIDOT\Documents\DOT Offices\District 3\Projects\D366\J02\CADD\66J02-details.dgn		DRAWN - RW	REVISED -
Default	PLOT SCALE = 100.0000 / 1 in.	CHECKED - EP	REVISED -
	PLOT DATE = 3/28/2018	DATE - 2/22/2018	REVISED -

**STATE OF ILLINOIS
DEPARTMENT OF TRANSPORTATION**

SUPERSTRUCTURE CONSTRUCTION DETAILS

SCALE: SHEET 5 OF 7 SHEETS STA. 147+46.22 TO STA. 148+00.73

F.A.P. RTE. 673	SECTION (112X-BR)BRR	COUNTY LIVINGSTON	TOTAL SHEETS 19	SHEET NO. 16
CONTRACT NO. 66J02				
ILLINOIS FED. AID PROJECT				

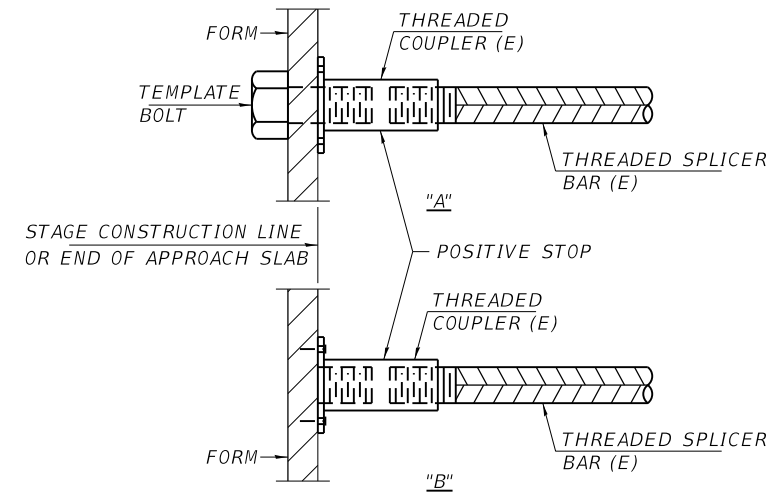


STANDARD BAR SPLICER ASSEMBLY

THREADED SPLICER BAR LENGTH = MIN. LAP LENGTH + 1 1/2" + THREAD LENGTH

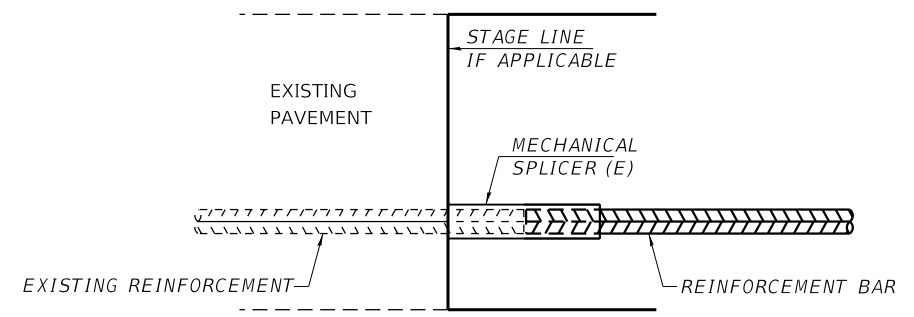
* EPOXY NOT REQUIRED ON BAR SPLICER ASSEMBLY COMPONENTS USED IN CONJUNCTION WITH BLACK BARS.

LOCATION	BAR SIZE	NO. ASSEMBLIES REQUIRED	MINIMUM LAP LENGTH
W. ABUT - EBL	#5	2	3'-0"
	#6	6	3'-7"
W. ABUT - WBL	#5	2	3'-0"
	#6	6	3'-7"
E. ABUT - EBL	#5	2	3'-0"
	#6	6	3'-7"
E. ABUT - WBL	#5	2	3'-0"
	#6	6	3'-7"



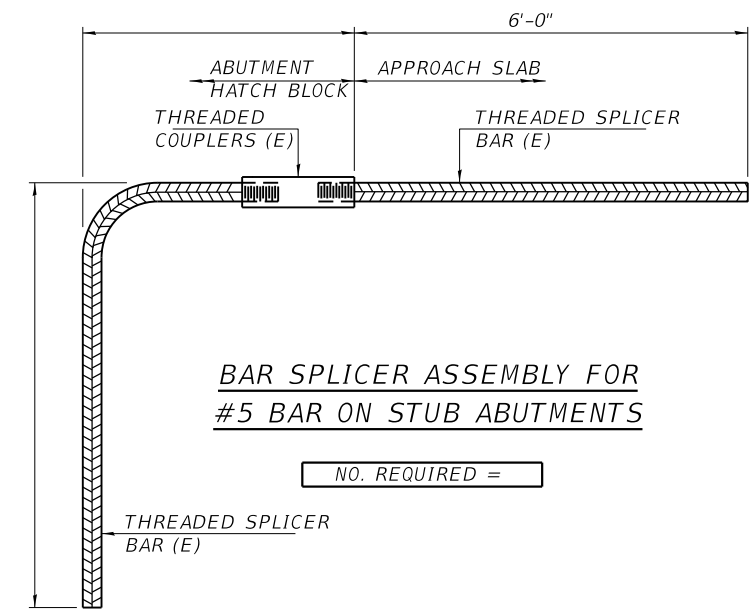
INSTALLATION AND SETTING METHODS

"A" : SET BAR SPLICER ASSEMBLY BY MEANS OF A TEMPLATE BOLT.
 "B" : SET BAR SPLICER ASSEMBLY BY NAILING TO WOOD FORMS OR CEMENTING TO STEEL FORMS.
 (E) : INDICATES EPOXY COATING.



STANDARD MECHANICAL SPLICER

LOCATION	BAR SIZE	NO. ASSEMBLIES REQUIRED
MEDIAN	#5	192



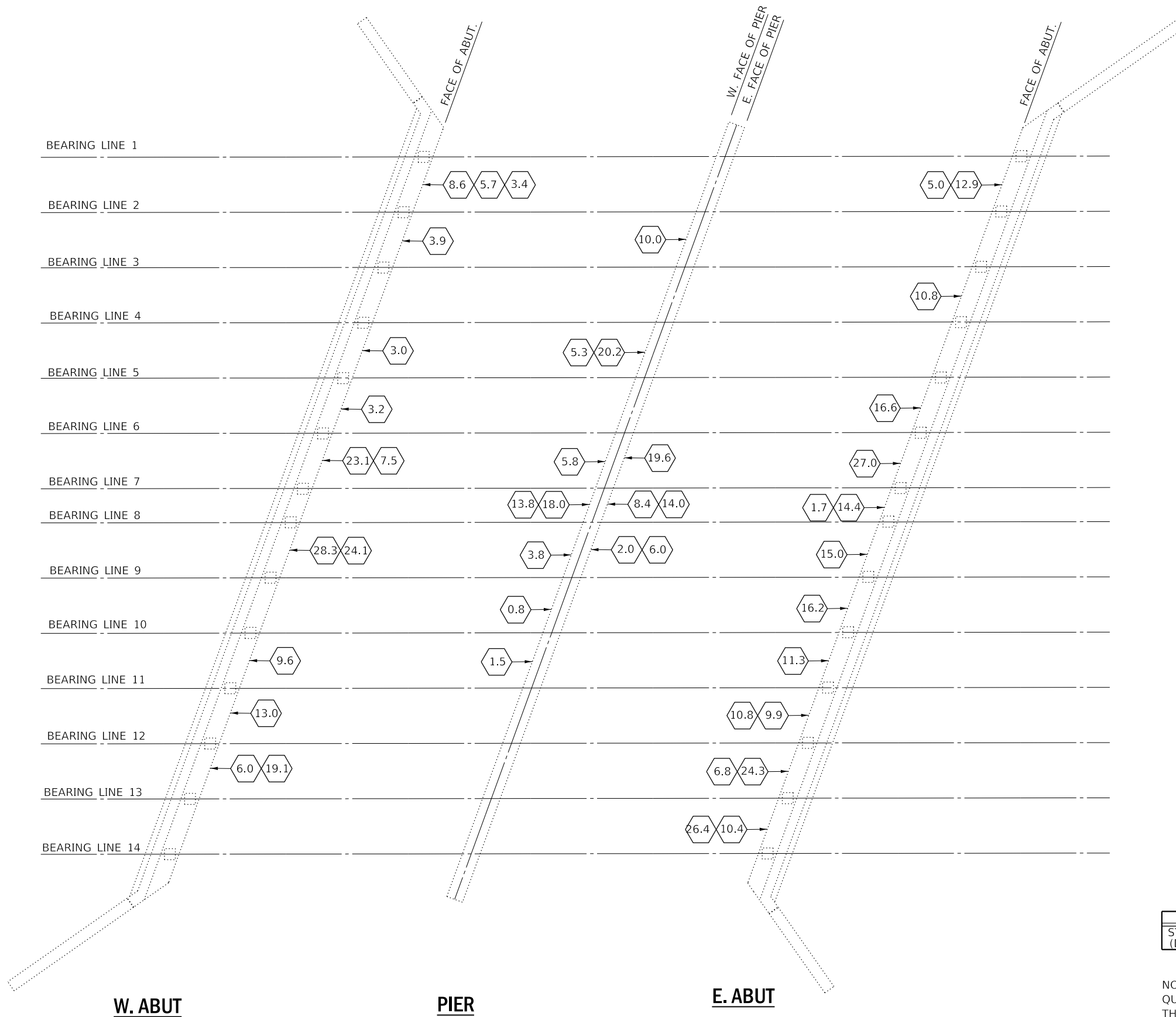
BAR SPLICER ASSEMBLY FOR #5 BAR ON STUB ABUTMENTS

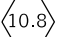
NO. REQUIRED =

NOTES

SPLICER BARS SHALL BE DEFORMED WITH THREADED ENDS AND HAVE A MINIMUM 60 KSI YIELD STRENGTH.
 ALL REINFORCEMENT SHALL BE LAPPED AND TIED TO THE SPLICER BARS.
 BAR SPLICER ASSEMBLIES SHALL BE EPOXY COATED ACCORDING TO THE REQUIREMENTS FOR REINFORCEMENT BARS. SEE SECTION 508 OF THE STANDARD SPECIFICATIONS.
 SEE APPROVED LIST OF BAR SPLICER ASSEMBLIES AND MECHANICAL SPLICERS FOR ALTERNATIVES.

BSD-1 2-17-2017

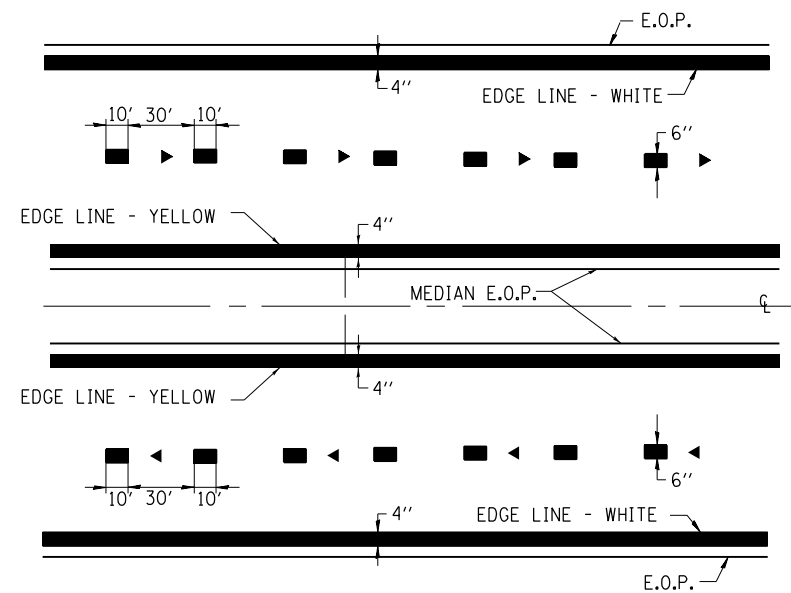
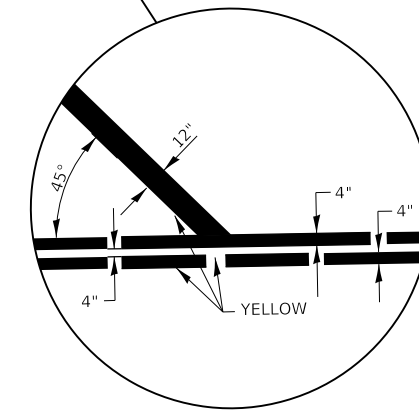
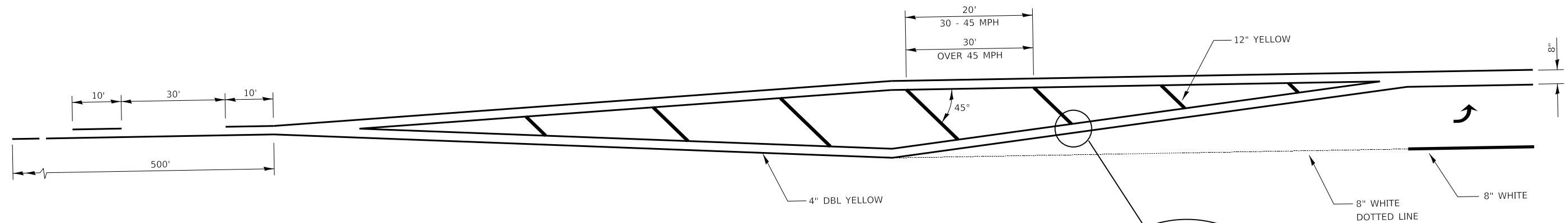


 SQ FT OF STRUCTURAL REPAIR OF CONCRETE
(DEPTH EQUAL TO OR LESS THAN 5")

TOTAL BILL OF MATERIAL

ITEM	UNIT	TOTAL
STRUCTUREAL REPAIR OF CONCRETE (DEPTH EQUAL TO OR LESS THAN 5")	SQ FT	507

NOTE:
QUANTITY IS ESTIMATED, THE ENGINEER SHALL SOUND
THE ENTIRE EXPOSED SURFACE OF THE ABUTMENTS
AND PIER TO ESTABLISH EXACT LOCATIONS AND QUANTITIES.



TYPICAL PAVEMENT MARKING DETAIL

FILE NAME =	USER NAME = woodyetjp	DESIGNED - RW	REVISED -
pw:\IL084EBIDINTEG\ilnotes.gov\PWIDOT\Documents\DOT Offices\District 3\Projects\0366J02\CADDData\66J02-details.dgn		DRAWN - RW	REVISED -
Default	PLOT SCALE = 100.0000' / in.	CHECKED - EP	REVISED -
	PLOT DATE = 3/26/2018	DATE - 2/22/2018	REVISED -

**STATE OF ILLINOIS
DEPARTMENT OF TRANSPORTATION**

DETAILS			
SCALE:	SHEET 1	OF 1	SHEETS
	STA.		TO STA.

F.A.P. RTE.	SECTION	COUNTY	TOTAL SHEETS	SHEET NO.
673	(112X-BR)BRR	LIVINGSTON	19	19
CONTRACT NO. 66J02				
ILLINOIS		FED. AID PROJECT		