

1. COVER SHEET
2. GENERAL NOTES
- 3-4. SUMMARY OF QUANTITIES
5. TYPICAL SECTIONS
- 6-12. SCHEDULES
13. TRAFFIC CONTROL AND PROTECTION, STANDARD 701400
14. PAVEMENT MARKING
- 15-16. CLASS A PATCHING DETAILS

STATE OF ILLINOIS
DEPARTMENT OF TRANSPORTATION

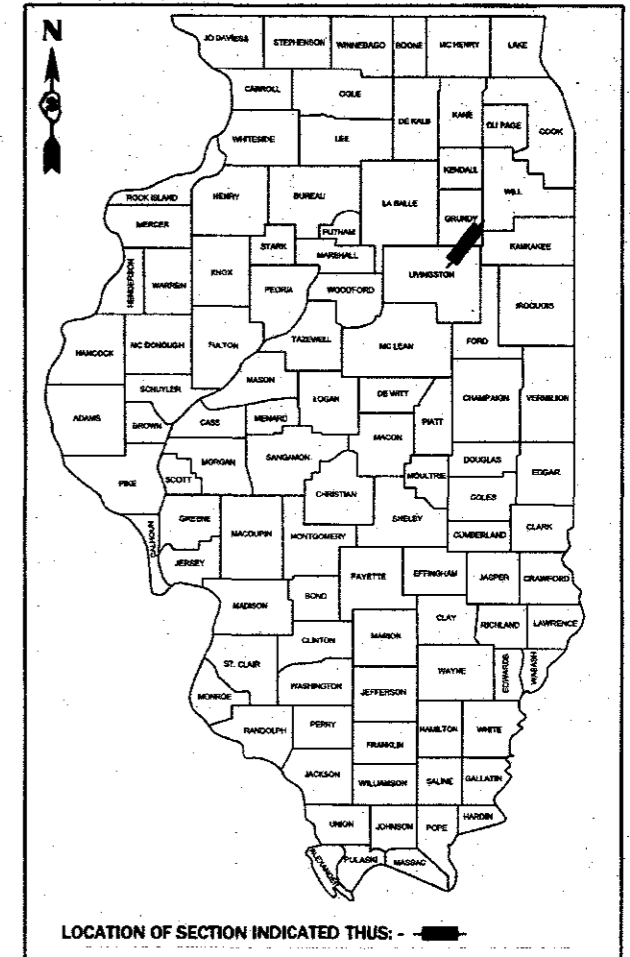
PROPOSED HIGHWAY PLANS

F.A.I. ROUTE 55 (I-55)
SECTION D3 I-55 PP 2019-1
PROJECT
PAVEMENT PATCHING
GRUNDY/LIVINGSTON COUNTIES

C-93-075-18

F.A.I. RTE.	SECTION	COUNTY	TOTAL SHEETS	SHEET NO.
55	D3 I-55 PP 2019-1	*	16	1
* GRUNDY/LIVINGSTON		ILLINOIS	CONTRACT NO. 66J31	

D-93-071-18

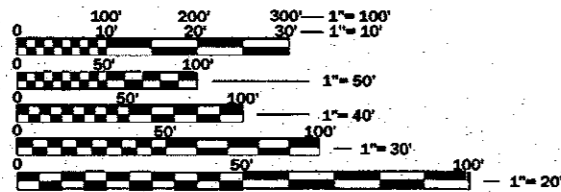


STANDARDS

000001-06	STANDARD SYMBOLS, ABBREVIATIONS AND PATTERNS
001001-02	AREAS OF REINFORCEMENT BARS
001006	DECIMAL OF AN INCH AND OF A FOOT
701101-05	OFF-ROAD OPERATIONS, MULTILANE, 15' (4.5 m) TO 24' (600 mm) FROM PAVEMENT EDGE
701106-02	OFF-ROAD OPERATIONS, MULTILANE, MORE THAN 15' (4.5 m) AWAY
701401-11	LANE CLOSURE, FREEWAY/EXPRESSWAY
701411-09	LANE CLOSURE, MULTILANE, AT ENTRANCE OR EXIT RAMP FOR SPEEDS ≥ 45 MPH
701426-09	LANE CLOSURE, MULTILANE, INTERMITTENT OR MOVING OPERATION, FOR SPEEDS ≥ 45 MPH
701428-01	TRAFFIC CONTROL, SETUP AND REMOVAL, FREEWAY/EXPRESSWAY
701901-07	TRAFFIC CONTROL DEVICES
701400-09	APPROACH TO LANE CLOSURE, FREEWAY/EXPRESSWAY

IMPROVEMENT BEGINS
MILE MARKER 205.9
(3.1 MILES SOUTH OF ODELL INTERCHANGE)

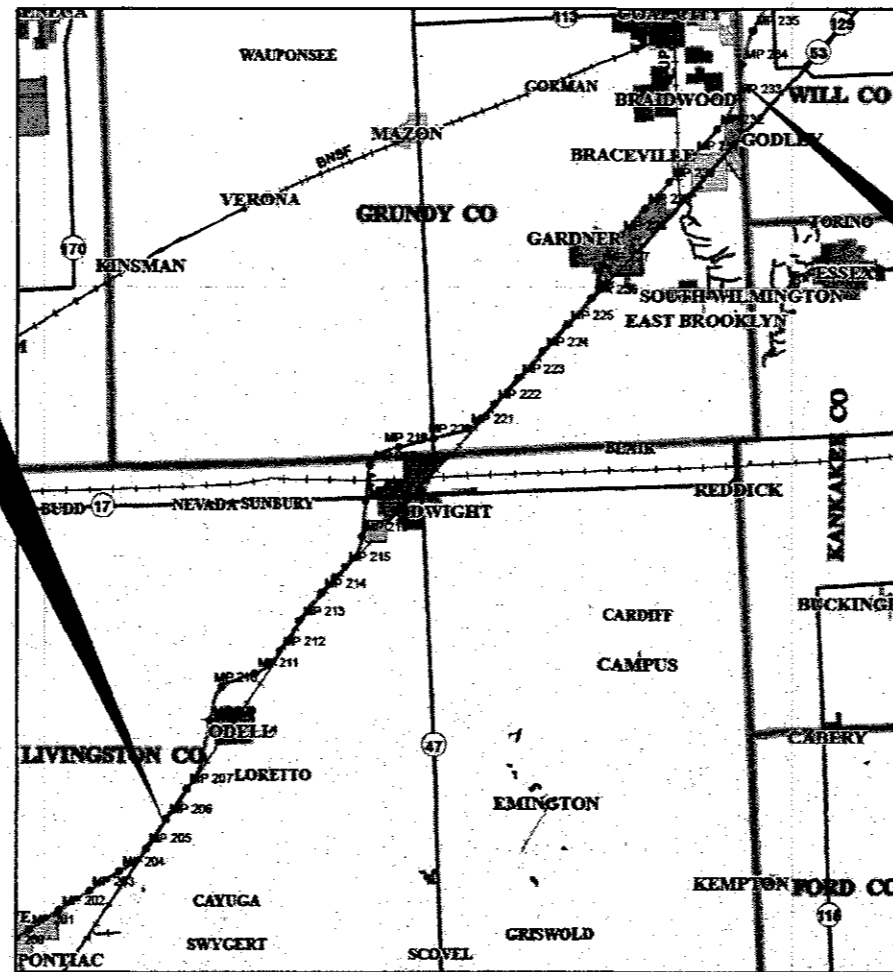
IMPROVEMENT ENDS
WILL COUNTY LINE
(M.M. 233.49)



FULL SIZE PLANS HAVE BEEN PREPARED USING STANDARD ENGINEERING SCALES. REDUCED SIZED PLANS WILL NOT CONFORM TO STANDARD SCALES. IN MAKING MEASUREMENTS ON REDUCED PLANS, THE ABOVE SCALES MAY BE USED.

J.U.L.I.E.
JOINT UTILITY LOCATION INFORMATION FOR EXCAVATION
1-800-892-0123
OR 811

PROJECT ENGINEER: JOE KANNEL P.E.
UNIT CHIEF: RON WOODSHANK
DISTRICT 3 NO. (815) 434-6131
CONTRACT NO. 66J31



GROSS LENGTH = 145,675 FT. = 27.59 MILE
NET LENGTH = 1828 FT. = 0.35 MILE

FUNCTIONAL CLASSIFICATION
RURAL/URBAN INTERSTATE
F.A.I. ROUTE 55 (I-55)
2017 ADT = 27500
P.V. 67.5% S.U. 5.8% M.U. 26.7%

STATE OF ILLINOIS
DEPARTMENT OF TRANSPORTATION

SUBMITTED 3-29-2018
[Signature]
REGIONAL ENGINEER

May 11 2018
[Signature]
ENGINEER OF DESIGN AND ENVIRONMENT

May 11 2018
[Signature]
DIRECTOR OF HIGHWAYS PROJECT IMPLEMENTATION

PRINTED BY THE AUTHORITY
OF THE STATE OF ILLINOIS

GENERAL NOTES

PLAN DIMENSIONS AND DETAILS RELATIVE TO EXISTING PLANS ARE SUBJECT TO NOMINAL CONSTRUCTION VARIATIONS. THE CONTRACTOR SHALL FIELD VERIFY EXISTING DIMENSIONS AND DETAILS AFFECTING NEW CONSTRUCTION AND MAKE NECESSARY APPROVED ADJUSTMENTS PRIOR TO CONSTRUCTION OR ORDERING OF MATERIALS. SUCH VARIATIONS SHALL NOT BE CAUSE FOR ADDITIONAL COMPENSATION FOR A CHANGE IN SCOPE OF WORK; HOWEVER, THE CONTRACTOR WILL BE PAID FOR THE QUANTITY ACTUALLY FURNISHED AT THE UNIT PRICE BID FOR THE WORK.

FOR STABILIZATION, ALL TYPE III BARRICADES WILL REQUIRE A MINIMUM OF FOUR SAND BAGS PER BARRICADE.

ALL EXCAVATED MATERIAL, WHICH INCLUDES DIGGING OR GRADING OF ANY SOIL OR FILL MATERIAL, WITH THE EXCEPTION OF AGGREGATE FILLS, MUST BE INCORPORATED WITHIN THE IDOT RIGHT OF WAY DUE TO ENVIRONMENTAL DOCUMENTATION REQUIREMENTS.

ANY REFERENCE TO A STANDARD IN THESE PLANS SHALL BE INTERPRETED TO MEAN THE EDITION AS INDICATED BY THE SUBNUMBER SHOWN IN THE LIST OF STANDARDS OR THE COPY INCLUDED IN THESE PLANS.

THE CONTRACTOR SHALL CONTACT JULIE AT LEAST 48 HOURS PRIOR TO EXCAVATION TO DETERMINE WHICH UTILITIES ARE IN THE AREA.

COMMITMENTS

STATE OF ILLINOIS
DEPARTMENT OF TRANSPORTATION
DISTRICT THREE
AS BUILT INFORMATION

SUPERVISING CONSTRUCTION FIELD ENGINEER

RESIDENT ENGINEER / TECHNICIAN

START & END DATES
OF CONSTRUCTION:

INSPECTORS:

STATE OF ILLINOIS
DEPARTMENT OF TRANSPORTATION
DISTRICT THREE

PREPARED BY: *Dr. Ben L*
DISTRICT STUDIES & PLANS ENGINEER

DATE: 3-27-18

EXAMINED BY: *Kyle Vadeyan vs*
DISTRICT CONSTRUCTION ENGINEER

Michael A. Stutz
DISTRICT MATERIALS ENGINEER

Janet...
DISTRICT OPERATIONS ENGINEER

STATE OF ILLINOIS
DEPARTMENT OF TRANSPORTATION

GENERAL NOTES

SCALE: SHEET 1 OF 1 SHEETS STA. TO STA.

FILE NAME =	USER NAME = woodjwp	DESIGNED - JW	REVISED -
path:\184584\ESD\INTEG\Illinois.gov\FW\DOT\Documents\DOT Office\District 3\Projects\0366331\CADD\asb66331-draft.dgn		DRAWN - JW	REVISED -
Default	PLOT SCALE = 100,0000 / 1in.	CHECKED - JW	REVISED -
	PLOT DATE = 3/24/2018	DATE - 03/05/2018	REVISED -

F.A.L. RTE.	SECTION	COUNTY	TOTAL SHEETS	SHEET NO.
55	D3 I-55 PP 2019-1		16	2
* GRUNDY/LIVINGSTON			CONTRACT NO. 66J31	
ILLINOIS FED. AID PROJECT				

CODE NO.	ITEM	UNIT	TOTAL QUANTITY	CONSTRUCTION CODE			
				CONTRACT MAINTENANCE 100% STATE ROADWAY 0005 LIVINGSTON COUNTY		CONTRACT MAINTENANCE 100% STATE ROADWAY 0005 GRUNDY COUNTY	
				RURAL	URBAN	RURAL	URBAN
44200541	CLASS A PATCHES, TYPE II, 9 INCH	SQ YD	326	123	72	131	
44200545	CLASS A PATCHES, TYPE III, 9 INCH	SQ YD	56	56			
44200547	CLASS A PATCHES, TYPE IV, 9 INCH	SQ YD	401	368	33		
44200620	CLASS A PATCHES, TYPE II, 14 INCH	SQ YD	1362	166		530	666
44200624	CLASS A PATCHES, TYPE III, 14 INCH	SQ YD	16			16	
44200628	CLASS A PATCHES, TYPE IV, 14 INCH	SQ YD	279	126		47	106
44213000	PATCHING REINFORCEMENT	SQ YD	2440	839	105	724	772
44213200	SAW CUTS	FOOT	9008	2360	398	3078	3172
44213204	TIE BARS 3/4"	EACH	9618	2116	432	3503	3567
67100100	MOBILIZATION	L SUM	1	0.25	0.25	0.25	0.25
70100420	TRAFFIC CONTROL AND PROTECTION, STANDARD 701411	EACH	18	4	4	8	2
70100800	TRAFFIC CONTROL AND PROTECTION, STANDARD 701401	L SUM	1	0.25	0.25	0.25	0.25
70103815	TRAFFIC CONTROL SURVEILLANCE	CAL DAY	35	12	2	10	11
* 78008310	POLYUREA PAVEMENT MARKING TYPE II - LINE 4"	FOOT	1984	628	235	543	578

14

* SPECIALTY ITEMS

FILE NAME =	USER NAME = woodyesp	DESIGNED - JW	REVISED -
pw:\IL\084EB\DI\INTEG\Illinois.gov\PWIDOT\Documents\DOT Office\District 3\Projects\0396\31\CADData\66\31-detailed.dgn	DRAWN - JW	CHECKED - JW	REVISED -
PLOT SCALE = 100.0000 1/in.	DATE - 03/07/2018		
Default			

**STATE OF ILLINOIS
DEPARTMENT OF TRANSPORTATION**

SUMMARY OF QUANTITIES

SCALE: SHEET 1 OF 2 SHEETS STA. TO STA.

F.A.I. RTE.	SECTION	COUNTY	TOTAL SHEETS	SHEET NO.
55	D31-55 PP 2019-1	*	16	3
* GRUNDY/LIVINGSTON			CONTRACT NO. 66J31	
ILLINOIS FED. AID PROJECT				

CODE NO.	ITEM	UNIT	TOTAL QUANTITY	CONSTRUCTION CODE							
				CONTRACT MAINTENANCE 100% STATE ROADWAY 0005 LIVINGSTON COUNTY		CONTRACT MAINTENANCE 100% STATE ROADWAY 0005 GRUNDY COUNTY					
				RURAL	URBAN	RURAL	URBAN				
				* 78008330	POLYUREA PAVEMENT MARKING TYPE II - LINE 6"	FOOT	1580	410	210	520	440
				X0325969	PORTABLE, VEHICLE MOUNTED, CHANGEABLE MESSAGE BOARD	CAL DAY	35	12	2	10	11
X0326880	MESSAGE BOARD VEHICLE DRIVER	HOUR	330	117	13	100	100				
X2700001	TEMPORARY RUMBLE STRIPS (SPECIAL)	EACH	28	10	2	12	4				
X7015005	CHANGEABLE MESSAGE SIGN	CAL DAY	63	19	9	17	18				

* SPECIALTY ITEMS

5

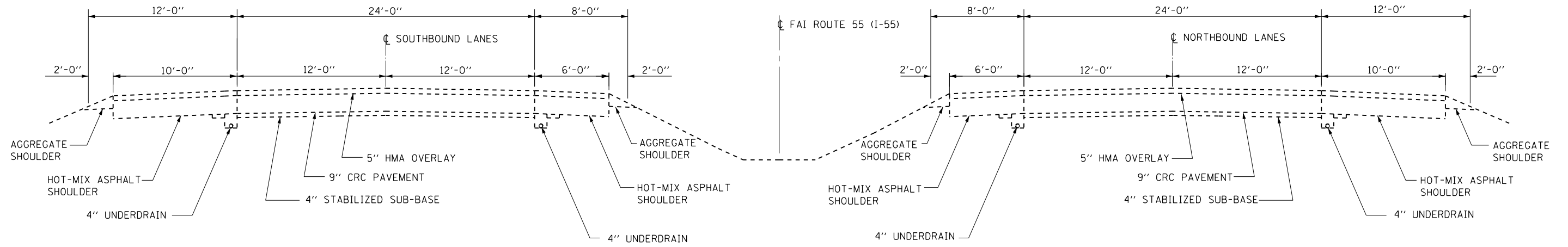
FILE NAME =	USER NAME = woodyerjo	DESIGNED - JW	REVISED -
pw:\ML084EB\INTEG\Illinois.gov\FWIDOT\Documents\DOT Office\District 3\Projects\66J31\CADD\66J31-details.dgn	DRAWN - JW	CHECKED - JW	REVISED -
PLOT SCALE = 100.0000' / in.	DATE - 03/07/2018	REVISED -	
Default	PLOT DATE = 3/26/2018		

**STATE OF ILLINOIS
DEPARTMENT OF TRANSPORTATION**

SUMMARY OF QUANTITIES

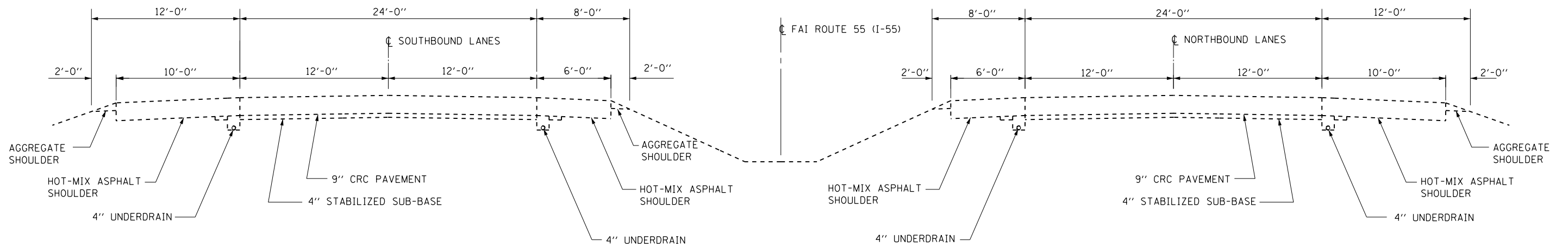
SCALE: SHEET 2 OF 2 SHEETS STA. TO STA.

F.A.I. RTE.	SECTION	COUNTY	TOTAL SHEETS	SHEET NO.
55	D3 I-55 PP 2019-1	*	16	4
* GRUNDY/LIVINGSTON			CONTRACT NO. 66J31	
ILLINOIS FED. AID PROJECT				



**TYPICAL SECTION
MAINLINE**

M.M. 205.9 TO M.M. 215.40
M.M. 221.10 TO M.M. 233.49



**TYPICAL SECTION
MAINLINE**

M.M. 215.40 TO M.M. 221.10

FILE NAME =	USER NAME = woodyetjp	DESIGNED - JW	REVISED -
pw:\IL084EBIDINTEG\ilnotes.gov\PWIDOT\Documents\DOT Offices\District 3\Projects\D366J31\CADData\66J31-details.dgn		DRAWN - JW	REVISED -
Default	PLOT SCALE = 100.0000' / in.	CHECKED - JW	REVISED -
	PLOT DATE = 3/24/2018	DATE - 03/06/2018	REVISED -

**STATE OF ILLINOIS
DEPARTMENT OF TRANSPORTATION**

TYPICAL SECTIONS

SCALE: SHEET 1 OF 1 SHEETS STA. TO STA.

F.A.I. RTE.	SECTION	COUNTY	TOTAL SHEETS	SHEET NO.
55	D3 I-55 PP 2019-1	*	16	5
* GRUNDY/LIVINGSTON			CONTRACT NO. 66J31	
ILLINOIS FED. AID PROJECT				

**SCHEDULE - PATCHING
NORTHBOUND LANES - RURAL**

LOCATION	PASSING LANE							DRIVING LANE							
	PATCH LENGTH	CLASS A PATCHING			PATCH REINF.	SAW CUTS	TIE BARS 3/4"	PATCH LENGTH	CLASS A PATCHING			PATCH REINF.	SAW CUTS	TIE BARS 3/4"	
		TYPE II 14"	TYPE III 14"	TYPE IV 14"					TYPE II 14"	TYPE III 14"	TYPE IV 14"				
MILE MARKER	FEET	SQ YD	SQ YD	SQ YD	SQ YD	FOOT	EACH	FEET	SQ YD	SQ YD	SQ YD	SQ YD	FOOT	EACH	
206.01	6	8				8	36	42	6	8			8	36	42
206.20									6	8			8	36	42
206.50									6	8			8	36	42
207.10									6	8			8	36	42
207.40									6	8			8	36	42
208.94	ODELL INTERCHANGE														
209.70									6	8			8	36	42
211.70	6	8				8	36	42	6	8			8	36	42
212.40									40			53	53	104	62
213.05	6	8				8	36	42	6	8			8	36	42
215.20	55				73	73	134	69							
TOTALS		24			73	97	242	195		64			117	392	398

**SCHEDULE - PATCHING
NORTHBOUND LANES - RURAL**

LOCATION	PASSING LANE							DRIVING LANE							
	PATCH LENGTH	CLASS A PATCHING			PATCH REINF.	SAW CUTS	TIE BARS 3/4"	PATCH LENGTH	CLASS A PATCHING			PATCH REINF.	SAW CUTS	TIE BARS 3/4"	
		TYPE II 9"	TYPE III 9"	TYPE IV 9"					TYPE II 9"	TYPE III 9"	TYPE IV 9"				
MILE MARKER	FEET	SQ YD	SQ YD	SQ YD	SQ YD	FOOT	EACH	FEET	SQ YD	SQ YD	SQ YD	SQ YD	FOOT	EACH	
215.30	6	8				8	36	42	6	8			8	36	42
215.31									6	8			8	36	42
215.35									50			67	67	124	67
215.39	10	13				13	44	42							
215.40	6	8				8	36	42	15		20		20	54	42
215.41	6	8				8	36	42	15		20		20	54	42
215.42									35			47	47	94	59
215.45	40			53	53	104	62	62	30			40	40	84	57
215.48	50			67	67	124	67	67	50			67	67	124	67
215.50									6	8			8	36	42
216.01									6	8			8	36	42
216.02									12		16		16	48	42
216.03									20			27	27	64	52
TOTALS		37		120	157	380	297	297		32	56	248	336	790	596

**SCHEDULE - PATCHING
NORTHBOUND LANES - URBAN**

LOCATION	PASSING LANE							DRIVING LANE							
	PATCH LENGTH	CLASS A PATCHING			PATCH REINF.	SAW CUTS	TIE BARS 3/4"	PATCH LENGTH	CLASS A PATCHING			PATCH REINF.	SAW CUTS	TIE BARS 3/4"	
		TYPE II 9"	TYPE III 9"	TYPE IV 9"					TYPE II 9"	TYPE III 9"	TYPE IV 9"				
MILE MARKER	FEET	SQ YD	SQ YD	SQ YD	SQ YD	FOOT	EACH	FEET	SQ YD	SQ YD	SQ YD	SQ YD	FOOT	EACH	
216.20	6	8				8	36	42	6	8			8	36	42
216.40									6	8			8	36	42
216.93	IL ROUTE 17 INTERCHANGE														
217.20									25			33	33	74	54
217.21	6	8				8	36	42							
217.22	6	8				8	36	42							
217.23									6	8			8	36	42
217.40	6	8				8	36	42							
217.45	6	8				8	36	42							
218.07	LIVINGSTON/GRUNDY COUNTY LINE														
TOTALS		40				40	180	210		24		33	57	182	180

**SCHEDULE - PATCHING
NORTHBOUND LANES - RURAL**

LOCATION	PASSING LANE							DRIVING LANE							
	PATCH LENGTH	CLASS A PATCHING			PATCH REINF.	SAW CUTS	TIE BARS 3/4"	PATCH LENGTH	CLASS A PATCHING			PATCH REINF.	SAW CUTS	TIE BARS 3/4"	
		TYPE II 9"	TYPE III 9"	TYPE IV 9"					TYPE II 9"	TYPE III 9"	TYPE IV 9"				
MILE MARKER	FEET	SQ YD	SQ YD	SQ YD	SQ YD	FOOT	EACH	FEET	SQ YD	SQ YD	SQ YD	SQ YD	FOOT	EACH	
218.07	LIVINGSTON/GRUNDY COUNTY LINE														
218.21								6	8				8	36	42
218.30								6	8				8	36	42
218.50	6	8				8	36	42	6	8			8	36	42
218.60	6	8				8	36	42	6	8			8	36	42
219.70								6	8				8	36	42
219.82	IL ROUTE 47 INTERCHANGE														
219.98								6	8				8	36	42
220.10								6	8				8	36	42
TOTALS		16				16	72	84		56			56	252	294

**SCHEDULE - PATCHING
NORTHBOUND LANES - RURAL**

LOCATION	PASSING LANE							DRIVING LANE							
	PATCH LENGTH	CLASS A PATCHING			PATCH REINF.	SAW CUTS	TIE BARS 3/4"	PATCH LENGTH	CLASS A PATCHING			PATCH REINF.	SAW CUTS	TIE BARS 3/4"	
		TYPE II 14"	TYPE III 14"	TYPE IV 14"					TYPE II 14"	TYPE III 14"	TYPE IV 14"				
MILE MARKER	FEET	SQ YD	SQ YD	SQ YD	SQ YD	FOOT	EACH	FEET	SQ YD	SQ YD	SQ YD	SQ YD	FOOT	EACH	
222.01	35			47	47	94	59								
224.50	6	8			8	36	42	6	8				8	36	42
226.80	6	8			8	36	42	6	8				8	36	42
226.90	GARDNER ROAD INTERCHANGE														
226.93	6	8			8	36	42	6	8				8	36	42
226.97	6	8			8	36	42	6	8				8	36	42
227.00	6	8			8	36	42	6	8				8	36	42
227.06	6	8			8	36	42	6	8				8	36	42
227.21	6	8			8	36	42	6	8				8	36	42
227.51	6	8			8	36	42	6	8				8	36	42
227.60	6	8			8	36	42	6	8				8	36	42
227.74	6	8			8	36	42	12		16			16	48	42
227.83	6	8			8	36	42	6	8				8	36	42
227.87	10	13			13	44	42	10	13				13	44	42
227.95	6	8			8	36	42	6	8				8	36	42
228.10	6	8			8	36	42	6	8				8	36	42
228.21	6	8			8	36	42	6	8				8	36	42
228.60	6	8			8	36	42	6	8				8	36	42
228.70	6	8			8	36	42	6	8				8	36	42
228.98	6	8			8	36	42	6	8				8	36	42
229.11	6	8			8	36	42	6	8				8	36	42
229.23	6	8			8	36	42	6	8				8	36	42
229.31	6	8			8	36	42	6	8				8	36	42
229.50	6	8			8	36	42	6	8				8	36	42
TOTALS		181		47	228	894	983		173	16			189	812	924

**SCHEDULE - PATCHING
NORTHBOUND LANES - URBAN**

LOCATION	PASSING LANE							DRIVING LANE							
	PATCH LENGTH	CLASS A PATCHING			PATCH REINF.	SAW CUTS	TIE BARS 3/4"	PATCH LENGTH	CLASS A PATCHING			PATCH REINF.	SAW CUTS	TIE BARS 3/4"	
		TYPE II 14"	TYPE III 14"	TYPE IV 14"					TYPE II 14"	TYPE III 14"	TYPE IV 14"				
MILE MARKER	FEET	SQ YD	SQ YD	SQ YD	SQ YD	FOOT	EACH	FEET	SQ YD	SQ YD	SQ YD	SQ YD	FOOT	EACH	
229.61	6	8			8	36	42	6	8				8	36	42
230.00	6	8			8	36	42	6	8				8	36	42
230.06	6	8			8	36	42	6	8				8	36	42
230.19	6	8			8	36	42	25			33		33	74	54
230.20	25			33	33	74	54	6	8				8	36	42
230.30	30			40	40	84	57	6	8				8	36	42
230.60	6	8			8	36	42	6	8				8	36	42
231.01	6	8			8	36	42	6	8				8	36	42
231.07	6	8			8	36	42	6	8				8	36	42
231.14	6	8			8	36	42	6	8				8	36	42
231.17	6	8			8	36	42								
231.32								6	8				8	36	42
231.35	6	8			8	36	42	6	8				8	36	42
231.61	6	8			8	36	42	6	8				8	36	42
231.73	6	8			8	36	42	6	8				8	36	42
232.03	6	8			8	36	42	6	8				8	36	42
232.10	6	8			8	36	42	6	8				8	36	42
232.24	6	8			8	36	42	6	8				8	36	42
232.33	6	8			8	36	42	6	8				8	36	42
232.42	6	8			8	36	42	6	8				8	36	42
232.47	6	8			8	36	42	6	8				8	36	42
232.60	6	8			8	36	42	6	8				8	36	42
232.68	6	8			8	36	42	6	8				8	36	42
232.75	6	8			8	36	42	6	8				8	36	42
232.78	6	8			8	36	42	6	8				8	36	42
232.85	6	8			8	36	42	6	8				8	36	42
233.03	6	8			8	36	42	6	8				8	36	42
233.18	6	8			8	36	42	6	8				8	36	42
233.20	6	8			8	36	42	6	8				8	36	42
233.34	6	8			8	36	42	6	8				8	36	42
233.41	6	8			8	36	42	6	8				8	36	42
233.39	REED ROAD INTERCHANGE														
233.49	WILL COUNTY LINE														
TOTALS		224		73	297	1166	1287		232		33		265	1118	1272

**SCHEDULE - PATCHING
SOUTHBOUND LANES - URBAN**

LOCATION	PASSING LANE							DRIVING LANE							
	PATCH LENGTH	CLASS A PATCHING			PATCH REINF.	SAW CUTS	TIE BARS 3/4"	PATCH LENGTH	CLASS A PATCHING			PATCH REINF.	SAW CUTS	TIE BARS 3/4"	
		TYPE II 14"	TYPE III 14"	TYPE IV 14"					TYPE II 14"	TYPE III 14"	TYPE IV 14"				
MILE MARKER	FEET	SQ YD	SQ YD	SQ YD	SQ YD	FOOT	EACH	FEET	SQ YD	SQ YD	SQ YD	SQ YD	FOOT	EACH	
233.49	WILL COUNTY LINE														
233.49	6	8			8	36	42	6	8				8	36	42
233.48	6	8			8	36	42	6	8				8	36	42
233.39	REED ROAD INTERCHANGE														
232.70	6	8			8	36	42	6	8				8	36	42
232.38	8	11			11	40	42	8	11				11	40	42
231.70	8	11			11	40	42	8	11				11	40	42
231.40	6	8			8	36	42	6	8				8	36	42
230.90	6	8			8	36	42	6	8				8	36	42
230.70	6	8			8	36	42	6	8				8	36	42
230.10	8	11			11	40	42	8	11				11	40	42
230.09	6	8			8	36	42	6	8				8	36	42
229.95	6	8			8	36	42	6	8				8	36	42
229.70	6	8			8	36	42	6	8				8	36	42
TOTALS		105			105	444	504		105				105	444	504

**SCHEDULE - PATCHING
SOUTHBOUND LANES - RURAL**

LOCATION	PASSING LANE							DRIVING LANE							
	PATCH LENGTH	CLASS A PATCHING			PATCH REINF.	SAW CUTS	TIE BARS 3/4"	PATCH LENGTH	CLASS A PATCHING			PATCH REINF.	SAW CUTS	TIE BARS 3/4"	
		TYPE II 14"	TYPE III 14"	TYPE IV 14"					TYPE II 14"	TYPE III 14"	TYPE IV 14"				
MILE MARKER	FEET	SQ YD	SQ YD	SQ YD	SQ YD	FOOT	EACH	FEET	SQ YD	SQ YD	SQ YD	SQ YD	FOOT	EACH	
229.44	6	8			8	36	42	6	8				8	36	42
228.95	6	8			8	36	42	6	8				8	36	42
228.52	6	8			8	36	42	6	8				8	36	42
228.45	6	8			8	36	42	6	8				8	36	42
226.95	6	8			8	36	42	6	8				8	36	42
226.94	6	8			8	36	42	6	8				8	36	42
226.90	GARDNER ROAD INTERCHANGE														
225.80								6	8				8	36	42
225.65	6	8			8	36	42	6	8				8	36	42
225.50	6	8			8	36	42	6	8				8	36	42
225.18								6	8				8	36	42
224.80								6	8				8	36	42
224.42								6	8				8	36	42
223.80								6	8				8	36	42
223.70								6	8				8	36	42
222.10								6	8				8	36	42
TOTALS		56			56	252	294		120				120	540	630

**SCHEDULE - PATCHING
SOUTHBOUND LANES - RURAL**

LOCATION	PASSING LANE							DRIVING LANE							
	PATCH LENGTH	CLASS A PATCHING			PATCH REINF.	SAW CUTS	TIE BARS 3/4"	PATCH LENGTH	CLASS A PATCHING			PATCH REINF.	SAW CUTS	TIE BARS 3/4"	
		TYPE II 9"	TYPE III 9"	TYPE IV 9"					TYPE II 9"	TYPE III 9"	TYPE IV 9"				
MILE MARKER	FEET	SQ YD	SQ YD	SQ YD	SQ YD	FOOT	EACH	FEET	SQ YD	SQ YD	SQ YD	SQ YD	FOOT	EACH	
221.80								6	8				8	36	42
221.70								6	8				8	36	42
220.30								8	11				11	40	42
219.90								6	8				8	36	42
219.82	IL ROUTE 47 INTERCHANGE														
219.80								6	8				8	36	42
218.90	6	8			8	36	42	6	8				8	36	42
218.07	LIVINGSTON/GRUNDY COUNTY LINE														
TOTALS		8			8	36	42		51				51	220	252

**SCHEDULE - PATCHING
SOUTHBOUND LANES - URBAN**

LOCATION	PASSING LANE							DRIVING LANE							
	PATCH LENGTH	CLASS A PATCHING			PATCH REINF.	SAW CUTS	TIE BARS 3/4"	PATCH LENGTH	CLASS A PATCHING			PATCH REINF.	SAW CUTS	TIE BARS 3/4"	
		TYPE II 9"	TYPE III 9"	TYPE IV 9"					TYPE II 9"	TYPE III 9"	TYPE IV 9"				
MILE MARKER	FEET	SQ YD	SQ YD	SQ YD	SQ YD	FOOT	EACH	FEET	SQ YD	SQ YD	SQ YD	SQ YD	FOOT	EACH	
218.07	LIVINGSTON/GRUNDY COUNTY LINE														
216.93	IL ROUTE 17 INTERCHANGE														
216.60								6	8				8	36	42
TOTALS									8				8	36	42

**SCHEDULE - PATCHING
SOUTHBOUND LANES - RURAL**

LOCATION	PASSING LANE							DRIVING LANE							
	PATCH LENGTH	CLASS A PATCHING			PATCH REINF.	SAW CUTS	TIE BARS 3/4"	PATCH LENGTH	CLASS A PATCHING			PATCH REINF.	SAW CUTS	TIE BARS 3/4"	
		TYPE II 9"	TYPE III 9"	TYPE IV 9"					TYPE II 9"	TYPE III 9"	TYPE IV 9"				
MILE MARKER	FEET	SQ YD	SQ YD	SQ YD	SQ YD	FOOT	EACH	FEET	SQ YD	SQ YD	SQ YD	SQ YD	FOOT	EACH	
215.52	8	11			11	40	42	8	11				11	40	42
215.50	6	8			8	36	42	6	8				8	36	42
215.40	6	8			8	36	42	6	8				8	36	42
TOTALS		27			27	112	126		27				27	112	126

**SCHEDULE - PATCHING
SOUTHBOUND LANES - RURAL**

LOCATION	PASSING LANE							DRIVING LANE							
	PATCH LENGTH	CLASS A PATCHING			PATCH REINF.	SAW CUTS	TIE BARS 3/4"	PATCH LENGTH	CLASS A PATCHING			PATCH REINF.	SAW CUTS	TIE BARS 3/4"	
		TYPE II 14"	TYPE III 14"	TYPE IV 14"					TYPE II 14"	TYPE III 14"	TYPE IV 14"				
MILE MARKER	FEET	SQ YD	SQ YD	SQ YD	SQ YD	FOOT	EACH	FEET	SQ YD	SQ YD	SQ YD	SQ YD	FOOT	EACH	
215.20	6	8			8	36	42								
214.98	6	8			8	36	42								
214.60								6	8				8	36	42
211.80	6	8			8	36	42								
211.35	8	11			11	40	42								
211.30	8	11			11	40	42								
210.40	6	8			8	36	42								
210.20								6	8				8	36	42
208.94	ODELL INTERCHANGE														
207.20	6	8			8	36	42								
TOTALS		62			62	260	294		16				16	72	84

**SCHEDULE - PAVEMENT MARKING
NORTHBOUND LANES - RURAL**

LOCATION		POLYUREA PAVEMENT MARKING TYPE I LINE 4"		POLYUREA PAVEMENT MARKING TYPE I LINE 6"
		FEET		FEET
		YELLOW	WHITE	WHITE
MILE POST	INTERCHANGE			
218.21			6	10
218.30			6	10
218.50		6	6	10
218.60		6	6	10
219.70			6	10
219.82	IL ROUTE 47 INTERCHANGE			
219.98			6	10
220.10			6	10
222.01		35		20
224.50		6	6	10
226.80		6	6	10
226.90	GARDNER ROAD INTERCHANGE			
226.93		6	6	10
226.97		6	6	10
227.00		6	6	10
227.06		6	6	10
227.21		6	6	10
227.51		6	6	10
227.60		6	6	10
227.74		6	12	10
227.83		6	6	10
227.87		10	10	10
227.95		6	6	10
228.10		6	6	10
228.21		6	6	10
228.60		6	6	10
228.70		6	6	10
228.98		6	6	10
229.11		6	6	10
229.23		6	6	10
229.31		6	6	10
229.50		6	6	10
SB TOTAL		183	184	
NB TOTALS		367		310

**SCHEDULE - PAVEMENT MARKING
NORTHBOUND LANES - URBAN**

LOCATION		POLYUREA PAVEMENT MARKING TYPE I LINE 4"		POLYUREA PAVEMENT MARKING TYPE I LINE 6"
		FEET		FEET
		YELLOW	WHITE	WHITE
MILE POST	INTERCHANGE			
229.61		6	6	10
230.00		6	6	10
230.06		6	6	10
230.19		6	25	10
230.20		25	6	10
230.30		30	6	20
230.60		6	6	10
231.01		6	6	10
231.07		6	6	10
231.14		6	6	10
231.17		6		10
231.32			6	10
231.35		6	6	10
231.61		6	6	10
231.73		6	6	10
232.03		6	6	10
232.10		6	6	10
232.24		6	6	10
232.33		6	6	10
232.42		6	6	10
232.47		6	6	10
232.60		6	6	10
232.68		6	6	10
232.75		6	6	10
232.78		6	6	10
232.85		6	6	10
233.03		6	6	10
233.18		6	6	10
233.20		6	6	10
233.34		6	6	10
233.41		6	6	10
233.39	REED ROAD INTERCHANGE			
233.49	WILL COUNTY LINE			
SB TOTAL		223	199	
NB TOTALS		422		320

**SCHEDULE - PAVEMENT MARKING
SOUTHBOUND LANES - URBAN**

LOCATION		POLYUREA PAVEMENT MARKING TYPE I LINE 4"		POLYUREA PAVEMENT MARKING TYPE I LINE 6"
		FEET		FEET
		YELLOW	WHITE	WHITE
MILE POST	INTERCHANGE			
233.49	WILL COUNTY LINE			
233.49		6	6	10
233.48		6	6	10
233.39	REED ROAD INTERCHANGE			
232.70		6	6	10
232.38		8	8	10
231.70		8	8	10
231.40		6	6	10
230.90		6	6	10
230.70		6	6	10
230.10		8	8	10
230.09		6	6	10
229.95		6	6	10
229.70		6	6	10
SB TOTAL		78	78	
SB TOTALS		156		120

**SCHEDULE - PAVEMENT MARKING
SOUTHBOUND LANES - RURAL**

LOCATION		POLYUREA PAVEMENT MARKING TYPE I LINE 4"		POLYUREA PAVEMENT MARKING TYPE I LINE 6"
		FEET		FEET
		YELLOW	WHITE	WHITE
MILE POST	INTERCHANGE			
229.44		6	6	10
228.95		6	6	10
228.52		6	6	10
228.45		6	6	10
226.95			6	10
226.94		6	6	10
226.90	GARDNER ROAD INTERCHANGE			
225.80			6	10
225.65		6	6	10
225.50		6	6	10
225.18			6	10
224.80			6	10
224.42			6	10
223.80			6	10
223.70			6	10
222.10			6	10
221.80			6	10
221.70			6	10
220.30			8	10
219.90			6	10
219.82	IL ROUTE 47 INTERCHANGE			
219.80			6	10
218.90		6	6	10
SB TOTAL		48	128	
SB TOTALS		176		210

FILE NAME =	USER NAME = woodyetjp	DESIGNED - JW	REVISED -
pw:\IL084EB\INTEG\Illinois.gov\PWIDOT\Documents\DOT Offices\District 3\Projects\0366\J31\CADData\66J31-details.dgn		DRAWN - JW	REVISED -
Default	PLOT SCALE = 100.0000' / in.	CHECKED - JW	REVISED -
	PLOT DATE = 3/24/2018	DATE - 03/06/2018	REVISED -

**STATE OF ILLINOIS
DEPARTMENT OF TRANSPORTATION**

**SCHEDULES - PAVEMENT MARKING
GRUNDY COUNTY**

SCALE: SHEET 6 OF 7 SHEETS STA. TO STA.

F.A.I. RTE.	SECTION	COUNTY	TOTAL SHEETS	SHEET NO.
55	D3 I-55 PP 2019-1	*	16	11
* GRUNDY/LIVINGSTON		CONTRACT NO. 66J31		
ILLINOIS		FED. AID PROJECT		

**SCHEDULE - PAVEMENT MARKING
NORTHBOUND LANES - RURAL**

LOCATION		POLYUREA PAVEMENT MARKING TYPE I LINE 4"		POLYUREA PAVEMENT MARKING TYPE I LINE 6"
		FEET		FEET
		YELLOW	WHITE	WHITE
MILE POST	INTERCHANGE			
206.01		6	6	10
206.20			6	10
206.50			6	10
207.10			6	10
207.40			6	10
208.94	ODELL INTERCHANGE			
209.70			6	10
211.70		6	6	10
212.40			40	20
213.05		6	6	10
215.20		55		20
215.30		6	6	10
215.31			6	10
215.35			50	20
215.39		10		10
215.40		6	15	10
215.41		6	15	10
215.42			35	20
215.45		40	30	20
215.48		50	50	20
215.50			6	10
216.01			6	10
216.02			12	10
216.03			20	10
SUBTOTAL		191	339	
NB TOTALS			530	290

**SCHEDULE - PAVEMENT MARKING
NORTHBOUND LANES - URBAN**

LOCATION		POLYUREA PAVEMENT MARKING TYPE I LINE 4"		POLYUREA PAVEMENT MARKING TYPE I LINE 6"
		FEET		FEET
		YELLOW	WHITE	WHITE
MILE POST	INTERCHANGE			
216.20		6	6	10
216.40			6	10
216.93	IL ROUTE 17 INTERCHANGE			
217.20			25	10
217.21		6		10
217.22		6		10
217.23			6	10
217.40		6		10
217.45		6		10
SUBTOTAL		30	43	
NB TOTALS			73	80

**SCHEDULE - PAVEMENT MARKING
SOUTHBOUND LANES - URBAN**

LOCATION		POLYUREA PAVEMENT MARKING TYPE I LINE 4"		POLYUREA PAVEMENT MARKING TYPE I LINE 6"
		FEET		FEET
		YELLOW	WHITE	WHITE
MILE POST	INTERCHANGE			
233.49	WILL COUNTY LINE			
233.49		6	6	10
233.48		6	6	10
233.39	REED ROAD INTERCHANGE			
232.70		6	6	10
232.38		8	8	10
231.70		8	8	10
231.40		6	6	10
230.90		6	6	10
230.70		6	6	10
230.10		8	8	10
230.09		6	6	10
229.95		6	6	10
229.70		6	6	10
216.93	IL ROUTE 17 INTERCHANGE			
216.60			6	10
SUBTOTAL		78	84	
SB TOTALS			162	130

**SCHEDULE - PAVEMENT MARKING
SOUTHBOUND LANES - RURAL**

LOCATION		POLYUREA PAVEMENT MARKING TYPE I LINE 4"		POLYUREA PAVEMENT MARKING TYPE I LINE 6"
		FEET		FEET
		YELLOW	WHITE	WHITE
MILE POST	INTERCHANGE			
215.52		8	8	10
215.50		6	6	10
215.40		6	6	10
215.20		6		10
214.98		6		10
214.60			6	10
211.80		6		10
211.35		8		10
211.30		8		10
210.40		6		10
210.20			6	10
208.94	ODELL INTERCHANGE			
207.20		6		10
SUBTOTAL		66	32	
SB TOTALS			98	120

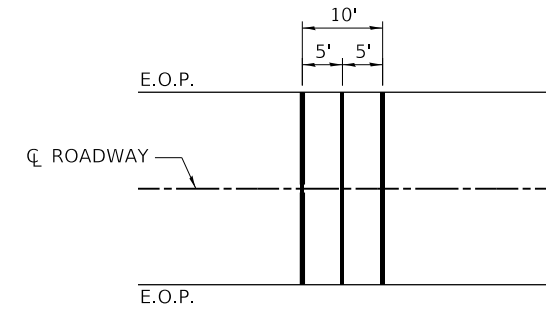
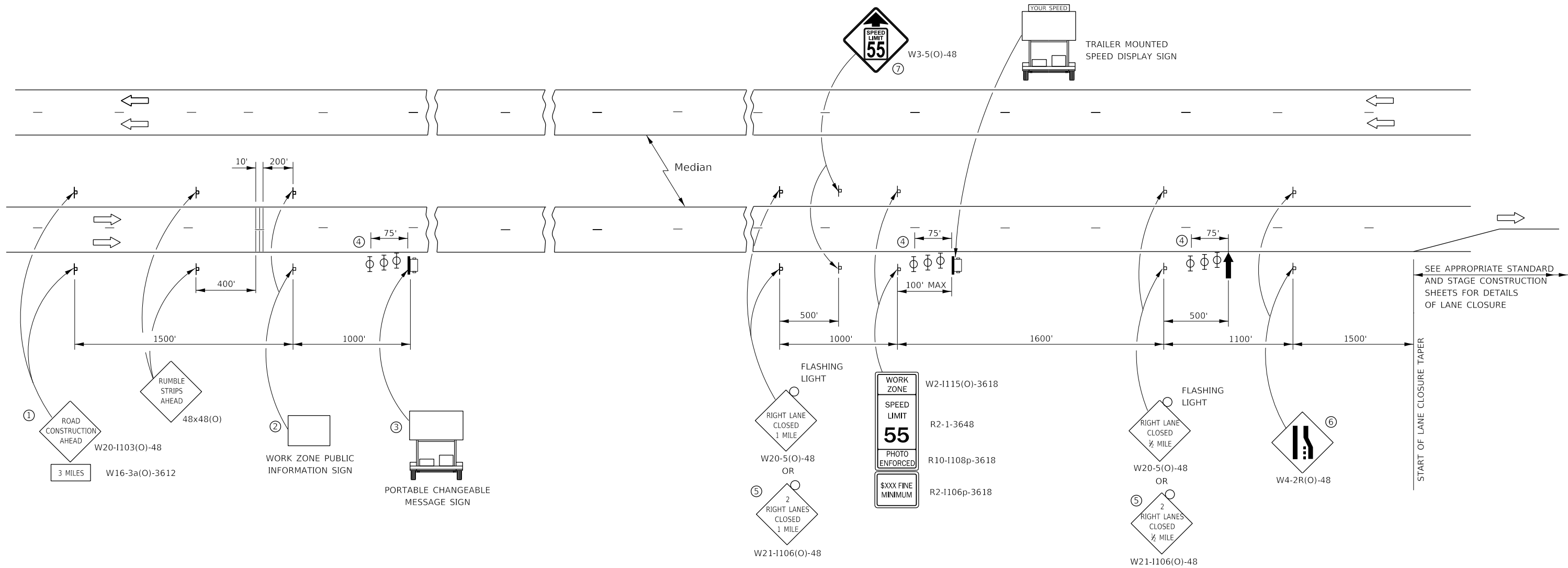
FILE NAME =	USER NAME = woodyetjp	DESIGNED - JW	REVISED -
pw:\IL084EB\INTEG\ifnotes.gov\PWIDOT\Documents\DOT Offices\District 3\Projects\0366\J31\CADData\66J31-details.dgn		DRAWN - JW	REVISED -
Default	PLOT SCALE = 100.0000' / in.	CHECKED - JW	REVISED -
	PLOT DATE = 3/24/2018	DATE - 03/06/2018	REVISED -

**STATE OF ILLINOIS
DEPARTMENT OF TRANSPORTATION**

**SCHEDULES - PAVEMENT MARKING
LIVINGSTON COUNTY**

SCALE: SHEET 7 OF 7 SHEETS STA. TO STA.

F.A.I. RTE.	SECTION	COUNTY	TOTAL SHEETS	SHEET NO.
55	D3 I-55 PP 2019-1	*	16	12
* GRUNDY/LIVINGSTON		CONTRACT NO. 66J31		
ILLINOIS		FED. AID PROJECT		



TEMPORARY RUMBLE STRIP

- ① THE ROAD CONSTRUCTION AHEAD SIGN SHALL BE LOCATED 3 MILES IN ADVANCE OF THE PROJECT LIMITS.
- ② THE MESSAGE AND SIZE OF THE WORK ZONE PUBLIC INFORMATION SIGN SHALL BE AS SPECIFIED BY THE DEPARTMENT.
- ③ TO BE PLACED IN THE MEDIAN WHEN FEASIBLE. THE MESSAGE BOARD SHALL BE USED TO DISPLAY STATUS OF LANES WITHIN THE PROJECT. THE PRIMARY MESSAGES SHALL BE:
"RIGHT LANE CLOSED" / " " x MILES AHEAD"
"LEFT LANE CLOSED" / " " x MILES AHEAD"
"ALL LANES OPEN"
- ④ THREE, TYPE II BARRICADES, DRUMS, OR VERTICAL BARRICADES AT 25' CENTERS.
- ⑤ THIS SIGN SHALL BE USED WHEN 2 LANES ARE CLOSED.
- ⑥ WHEN THE LEFT LANE IS CLOSED, SWITCH THESE TWO SIGNS AND THE DIRECTION OF THE MERGE ARROW.
- ⑦ THIS SIGN SHALL ONLY BE USED IF THE EXISTING SPEED LIMIT IS GREATER THAN 65 MPH.

- ↑ ARROW BOARD
- ☐ PORTABLE CHANGEABLE MESSAGE SIGN
- ⊢ SIGN
- ⊕ TYPE II BARRICADE, DRUM, OR VERTICAL BARRICADE WITH MONODIRECTIONAL FLASHING LIGHT
- ≡ TEMPORARY RUMBLE STRIPS (SEE SPECIAL PROVISION)

GENERAL NOTE:

THIS STANDARD IS USED WHERE AT ANY TIME A LANE IS CLOSED ON A FREEWAY/EXPRESSWAY.

WHEN THE LEFT LANE IS CLOSED, LEFT LANE CLOSED SIGNS SHALL BE SUBSTITUTED FOR THE RIGHT LANE CLOSED SIGNS.

THE FIRST THREE SIGNS AND THE MESSAGE BOARD ARE STATIONARY. THE OTHER SIGNS AND ARROWBOARDS SHALL BE MOVED AS NECESSARY TO MAINTAIN THE REQUIRED DISTANCE FROM THE START OF THE LANE CLOSURE TAPER(S).

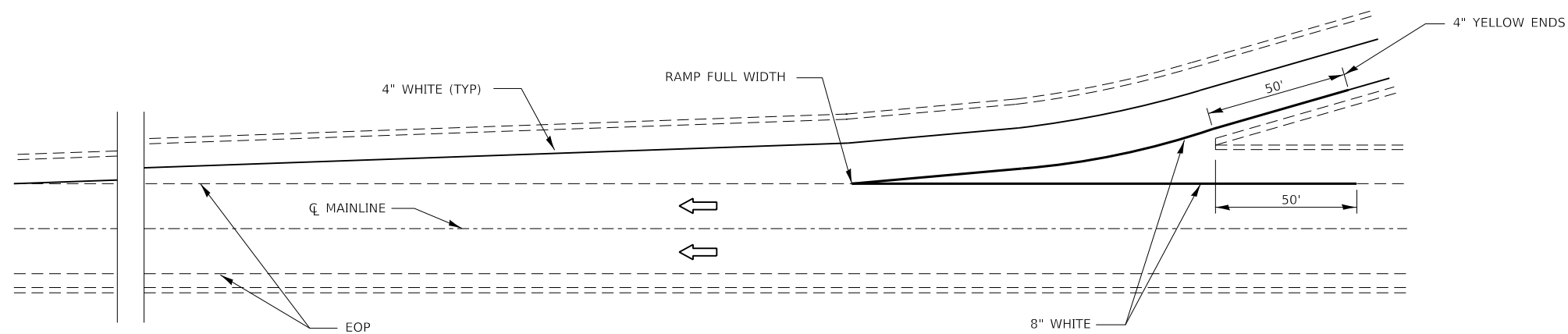
SEE SPECIAL PROVISIONS.

FILE NAME =	USER NAME = woodyetjp	DESIGNED - JW	REVISED - JW
pw:\IL084EBIDINTEG\ilnotes.gov\PWIDOT\Documents\DOT Offices\District 3\Projects\D366J31\CADData\66J31-details.dgn		DRAWN - JW	REVISED - JW
Default	PLOT SCALE = 100.0000 "/in.	CHECKED - JW	REVISED - JW
	PLOT DATE = 3/24/2018	DATE - 03/06/2018	REVISED - 03/21/2018

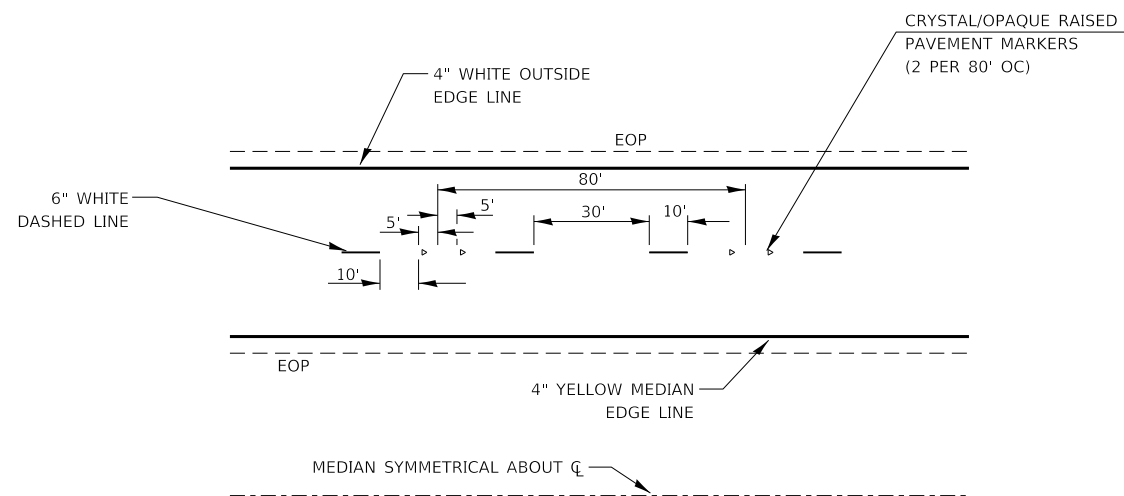
**STATE OF ILLINOIS
DEPARTMENT OF TRANSPORTATION**

TRAFFIC CONTROL AND PROTECTION, STANDARD 701400			
SCALE:	SHEET 1	OF 1 SHEETS	STA. TO STA.

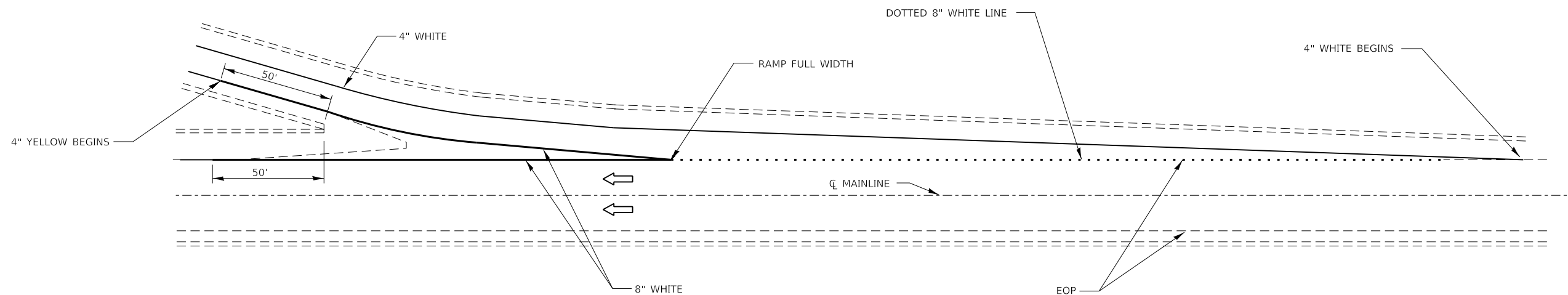
F.A.I. RTE.	SECTION	COUNTY	TOTAL SHEETS	SHEET NO.
55	D3 I-55 PP 2019-1	*	16	13
* GRUNDY/LIVINGSTON			CONTRACT NO. 66J31	
ILLINOIS FED. AID PROJECT				



TYPICAL PAVEMENT MARKING FOR ENTRANCE RAMP TERMINALS



TYPICAL PAVEMENT MARKINGS



TYPICAL PAVEMENT MARKINGS FOR EXIT RAMP TERMINALS

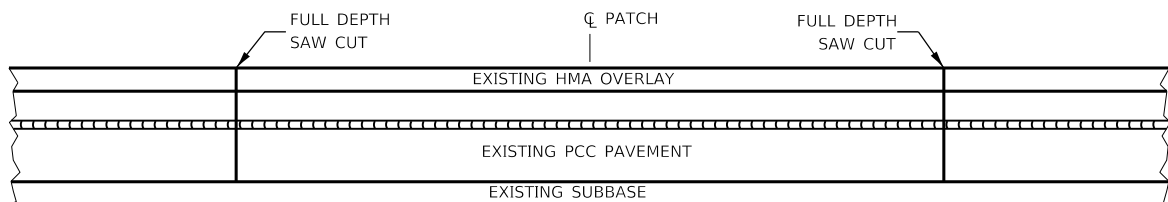
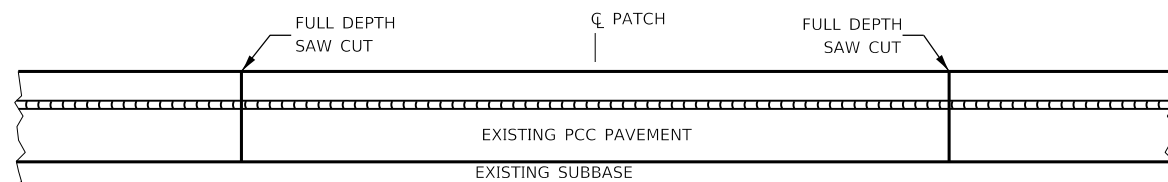
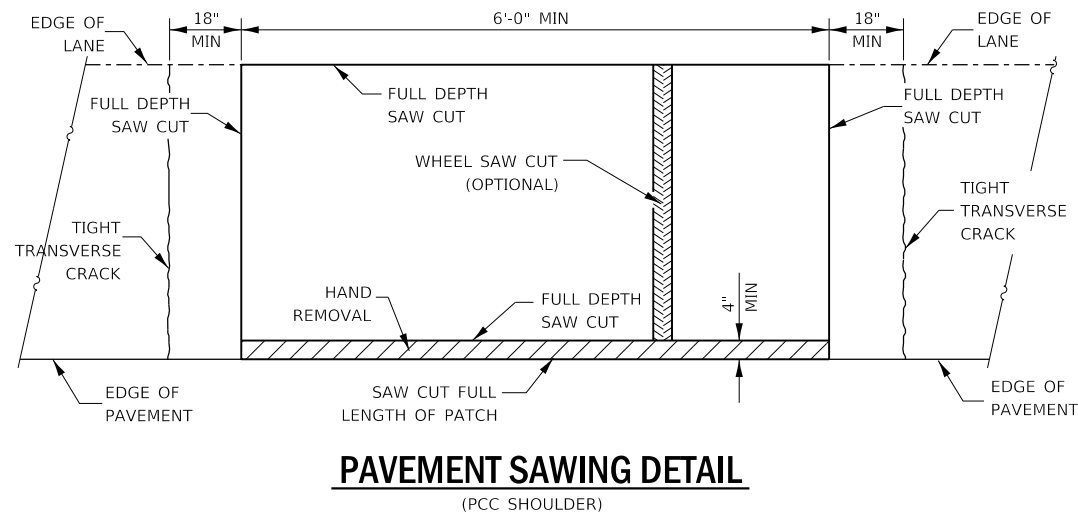
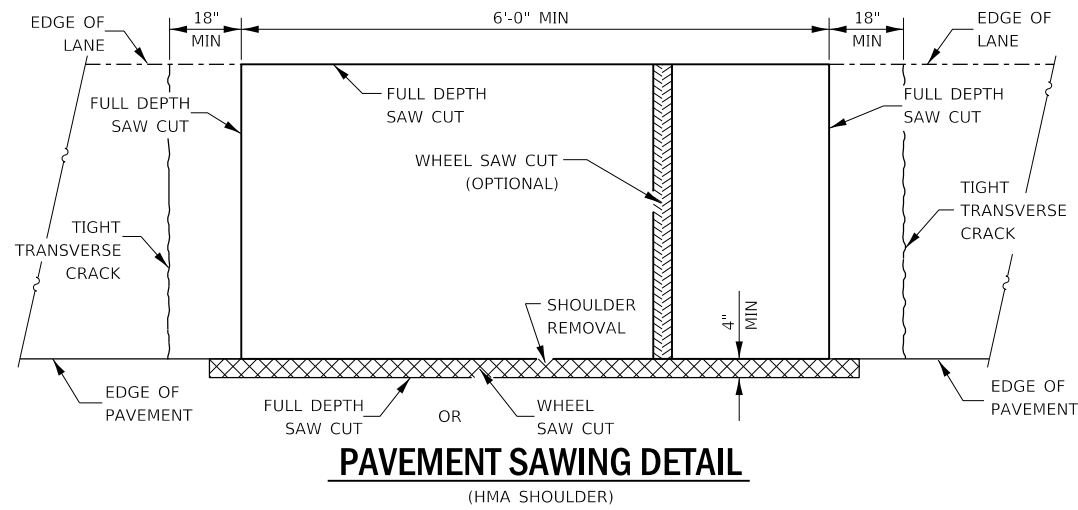
FILE NAME =	USER NAME = woodyetjp	DESIGNED - JW	REVISED -
pw:\IL084EBIDINTEG\ifnotes.gov\PWIDOT\Documents\DOT Offices\District 3\Projects\D366J31\CADDData\66J31-details.dgn		DRAWN - JW	REVISED -
Default	PLOT SCALE = 100.0000' / in.	CHECKED - JW	REVISED -
	PLOT DATE = 3/24/2018	DATE - 03/06/2018	REVISED -

**STATE OF ILLINOIS
DEPARTMENT OF TRANSPORTATION**

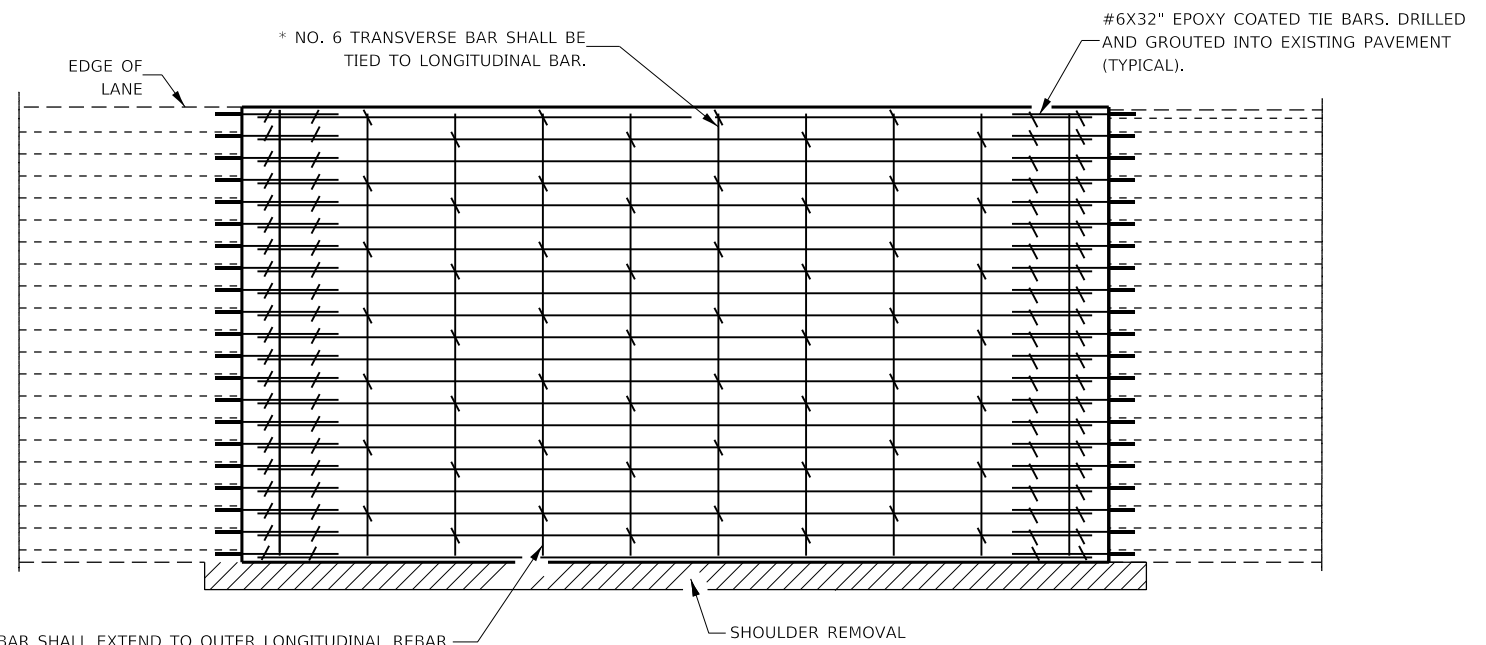
PAVEMENT MARKING DETAILS

SCALE: SHEET 1 OF 1 SHEETS STA. TO STA.

F.A.I. RTE.	SECTION	COUNTY	TOTAL SHEETS	SHEET NO.
55	D3 I-55 PP 2019-1	*	16	14
* GRUNDY/LIVINGSTON			CONTRACT NO. 66J31	
ILLINOIS		FED. AID PROJECT		

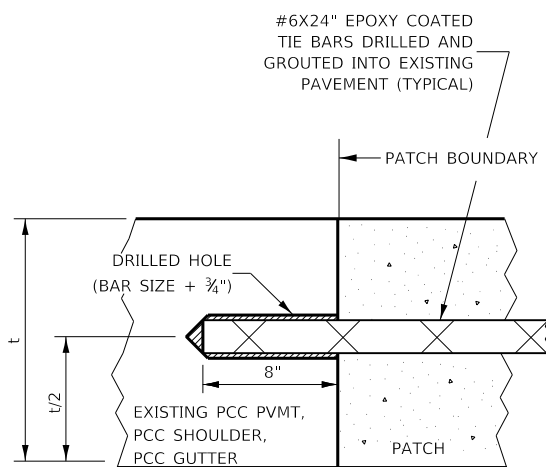


PAVEMENT SAWING DETAIL FOR CLASS A PATCHING (CRC PAVEMENT)



TRANSVERSE REBAR SHALL EXTEND TO OUTER LONGITUDINAL REBAR WHILE PROVIDING A MINIMUM 3" CLEARANCE FROM EXISTING PAVEMENT EDGE

PAVEMENT REINFORCEMENT DETAIL



LONGITUDINAL CONSTRUCTION JOINT

PATCHES MORE THAN 20' IN LENGTH SHALL BE TIED TO ADJACENT PAVEMENT, PCC SHOULDERS OR PCC CURB AND GUTTER WITH #6x24" EPOXY COATED TIE BARS AT 36" CENTERS.

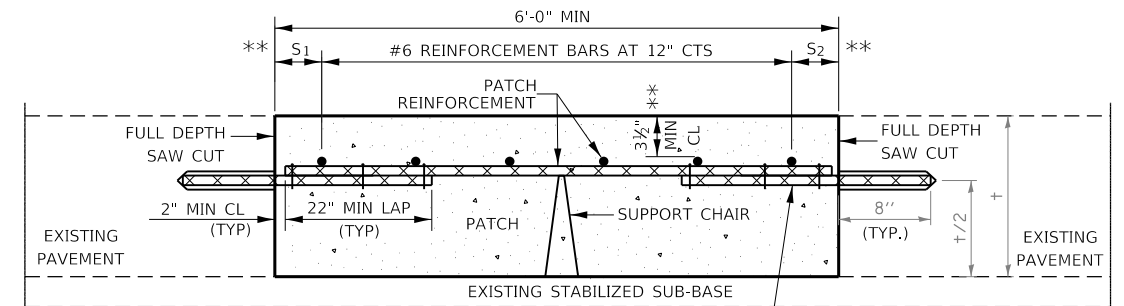
NOTES:

EXISTING LONGITUDINAL REINFORCEMENT SPACING: 4".

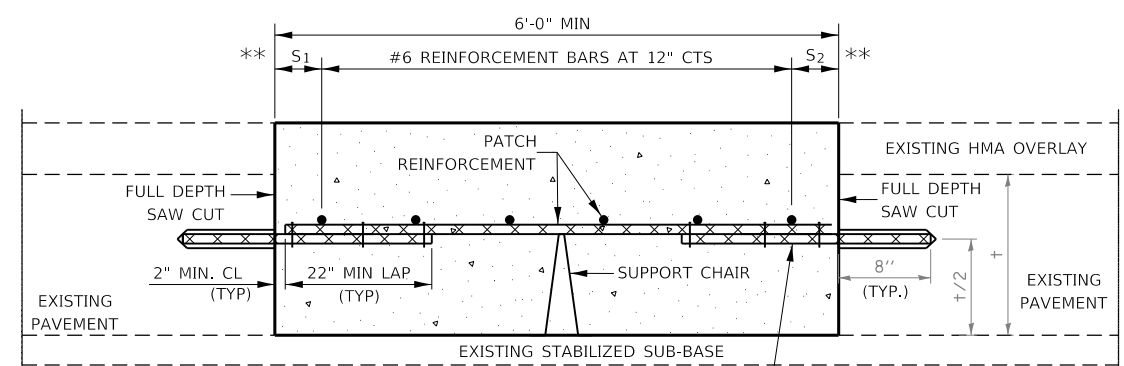
SPACING OF NEW LONGITUDINAL REINFORCEMENT AND NEW LONGITUDINAL TIE BARS SHALL MATCH SPACING OF EXISTING REINFORCEMENT AND SHALL BE TIED TOGETHER WITH A MINIMUM OF TWO TIES PER BAR.

* EVERY THIRD INTERSECTION MUST BE TIED. WHEN THE MINIMUM CLEARANCE CANNOT BE OBTAINED WITH THE TRANSVERSE REBAR ON TOP, THEN THE TRANSVERSE REBAR SHALL BE TIED TO THE BOTTOM OF THE LONGITUDINAL REBAR.

** VARIABLES WHERE S₁ AND S₂ ARE 2 1/2" MIN. AND 12" MAX.



WITHOUT HMA OVERLAY



WITH HMA OVERLAY

PATCHING DETAIL FOR CLASS A PATCHING (CRC PAVEMENT)

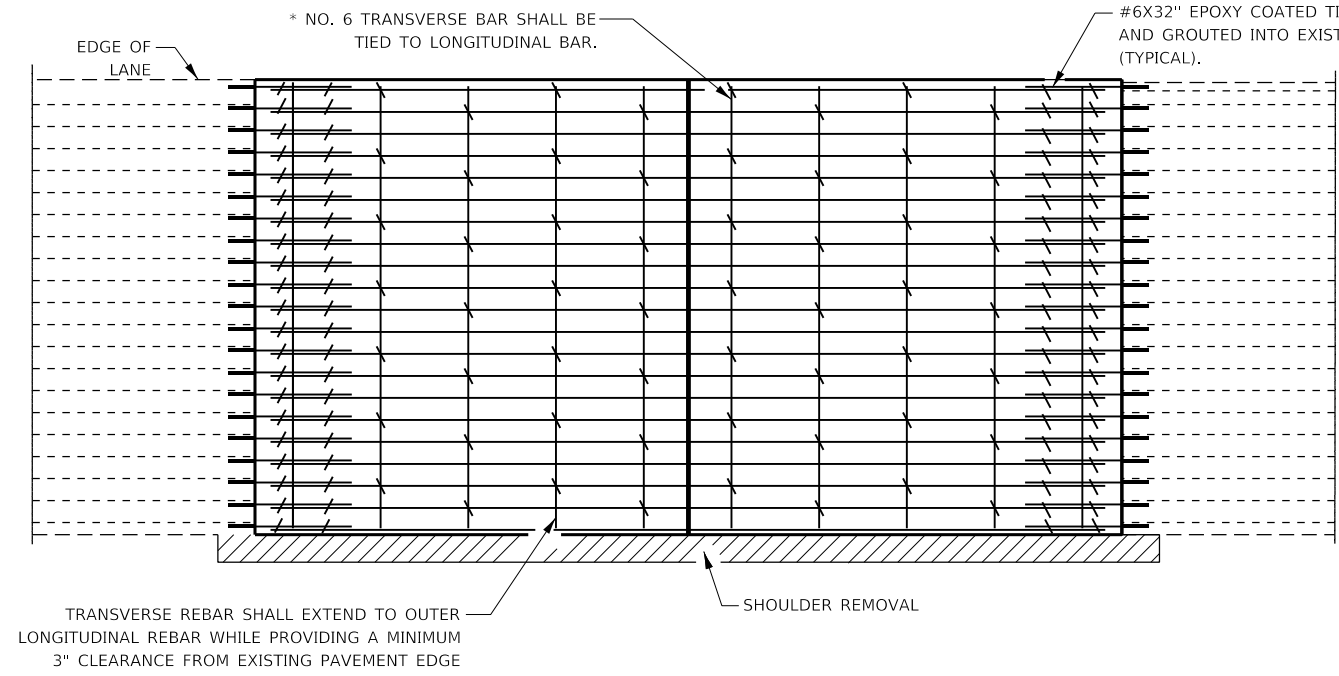
FILE NAME =	USER NAME = woodyetjp	DESIGNED - JW	REVISED -
pw:\IL084EBID\INTEG\ifnotes.gov\PWIDOT\Documents\DOT Offices\District 3\Projects\D366J31\CADData\66J31-details.dgn		DRAWN - JW	REVISED -
Default	PLOT SCALE = 100.0000' / in.	CHECKED - JW	REVISED -
	PLOT DATE = 3/24/2018	DATE - 03/06/2018	REVISED -

STATE OF ILLINOIS
DEPARTMENT OF TRANSPORTATION

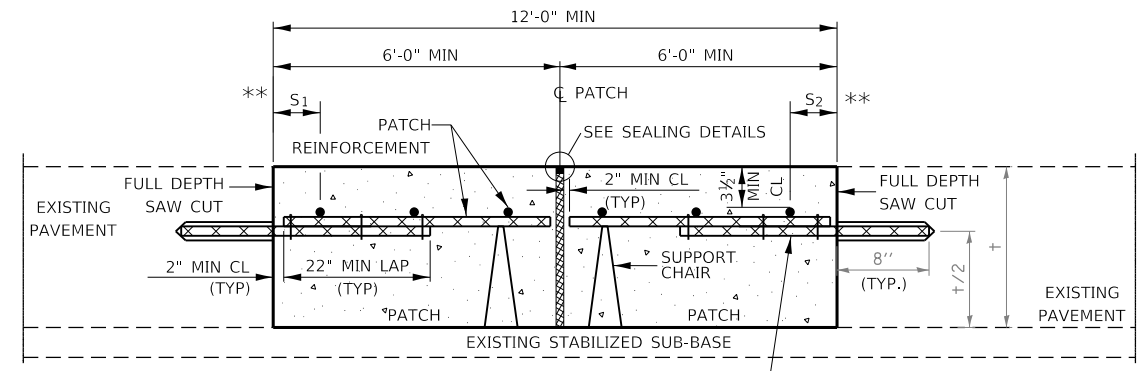
CLASS A PATCHING DETAILS

SCALE: SHEET 1 OF 2 SHEETS STA. TO STA.

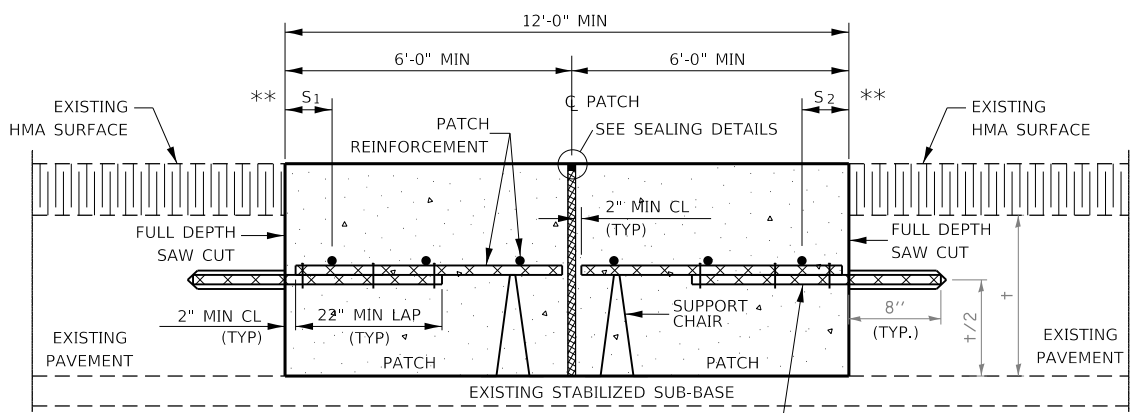
F.A.I. RTE.	SECTION	COUNTY	TOTAL SHEETS	SHEET NO.
55	D3 I-55 PP 2019-1	*	16	15
* GRUNDY/LIVINGSTON			CONTRACT NO. 66J31	
ILLINOIS FED. AID PROJECT				



PAVEMENT REINFORCEMENT DETAIL

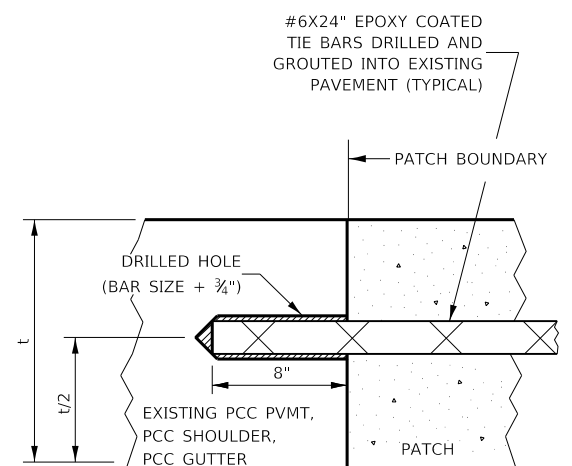


WITHOUT HMA OVERLAY



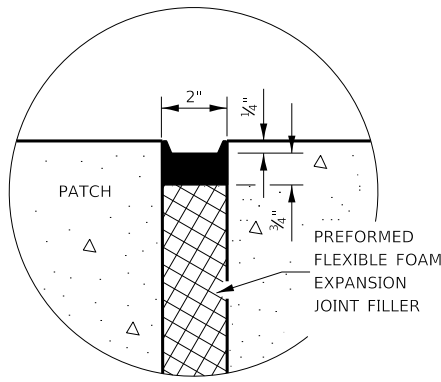
WITH HMA OVERLAY

CLASS A PATCH WITH EXPANSION JOINT

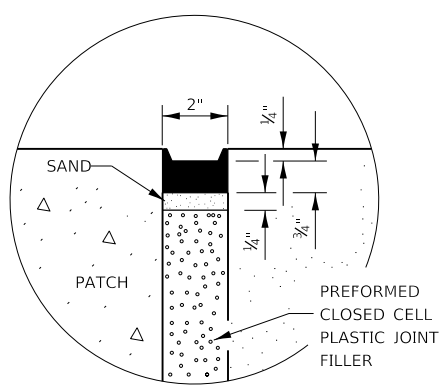


LONGITUDINAL CONSTRUCTION JOINT

PATCHES MORE THAN 20' IN LENGTH SHALL BE TIED TO ADJACENT PAVEMENT, PCC SHOULDERS OR PCC CURB AND GUTTER WITH #6X24" EPOXY COATED TIE BARS AT 36" CENTERS.



SEALING DETAIL



SEALING DETAIL

- NOTES:**
- EXISTING LONGITUDINAL REINFORCEMENT SPACING; 4".
 - SPACING OF NEW LONGITUDINAL REINFORCEMENT AND NEW LONGITUDINAL TIE BARS SHALL MATCH SPACING OF EXISTING REINFORCEMENT AND SHALL BE TIED TOGETHER WITH A MINIMUM OF TWO TIES PER BAR.
 - SUPPORT CHAIRS SHALL BE REQUIRED WHENEVER PATCH LENGTH EXCEEDS 6'-0"
 - * EVERY THIRD INTERSECTION MUST BE TIED. WHEN THE MINIMUM CLEARANCE CANNOT BE OBTAINED WITH THE TRANSVERSE REBAR ON TOP, THEN THE TRANSVERSE REBAR SHALL BE TIED TO THE BOTTOM OF THE LONGITUDINAL REBAR.
 - ** VARIABLES WHERE S₁ AND S₂ ARE 2½" MIN. AND 12" MAX.

FILE NAME =	USER NAME = woodyetjp	DESIGNED - JW	REVISED -	STATE OF ILLINOIS DEPARTMENT OF TRANSPORTATION	CLASS A PATCHING DETAILS			F.A.I. RTE.	SECTION	COUNTY	TOTAL SHEETS	SHEET NO.
pw:\IL084EBIDINTEG\ilnotes.gov\PWIDOT\Documents\DOT Offices\District 3\Projects\D366J31\CADData\66J31-details.dgn	DRAWN - JW	REVISED -	55					D3 I-55 PP 2019-1	*	16	16	
Default	PLOT SCALE = 100.0000' / in.	CHECKED - JW	REVISED -		* GRUNDY/LIVINGSTON			CONTRACT NO. 66J31				
	PLOT DATE = 3/24/2018	DATE - 03/06/2018	REVISED -		SCALE:	SHEET 2	OF 2	SHEETS	STA.	TO STA.	ILLINOIS	FED. AID PROJECT