

STATE OF ILLINOIS
DEPARTMENT OF TRANSPORTATION

RTE.	SECTION	COUNTY	TOTAL SHEETS	SHEET NO.
+	(27) TR	SANGAMON	5	1
		ILLINOIS	CONTRACT NO. 72K58	

*FAI 72, FAP 666 (I-72, I-55 BUS)

D-96-043-18

FOR INDEX OF SHEETS, SEE SHEET NO. 2

PROPOSED IMPROVEMENTS

FAI 72, FAP 666 (I-72, I-55 BUS)
SECTION: (27)TR
TREE REMOVAL

SANGAMON CO
C-96-087-18



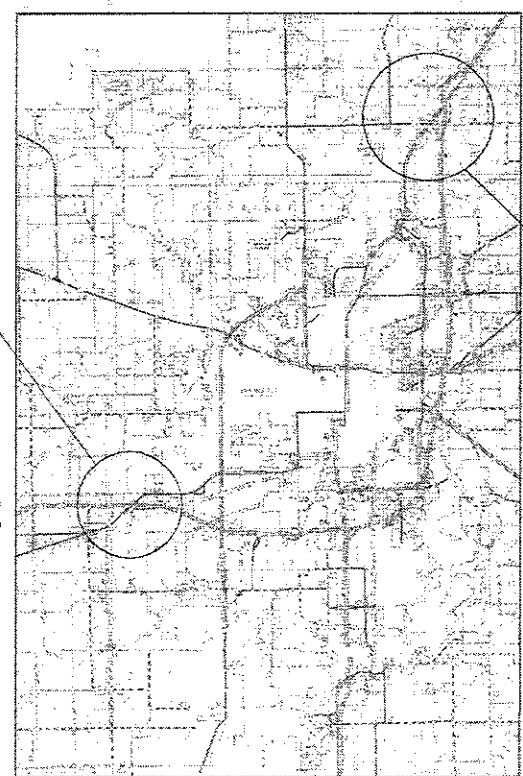
FULL SIZE PLANS HAVE BEEN PREPARED USING STANDARD ENGINEERING SCALES. REDUCED SIZED PLANS WILL NOT CONFORM TO STANDARD SCALES. IN MAKING MEASUREMENTS ON REDUCED PLANS, THE ABOVE SCALES MAY BE USED.

J.U.L.I.E.
JOINT UTILITY LOCATION INFORMATION FOR EXCAVATION
1-800-892-0123
OR 811

PROJECT ENGINEER : MIKE IRWIN - (217)524-7765
PROJECT MANAGER : TIM SHARP - (217)524-9160

CONTRACT NO. 72K58

R 6 W



PROJECT LOCATION
WABASH AVE/I 72

PROJECT LOCATION
BUSINESS LOOP 55

STATE OF ILLINOIS
DEPARTMENT OF TRANSPORTATION

SUBMITTED 3 April 2018
[Signature]
REGION FOUR ENGINEER

May 11 2018
[Signature]
ENGINEER OF DESIGN AND ENVIRONMENT

May 11 2018
[Signature]
DIRECTOR OF HIGHWAYS PROJECT IMPLEMENTATION

PRINTED BY THE AUTHORITY
OF THE STATE OF ILLINOIS

INDEX OF SHEETS

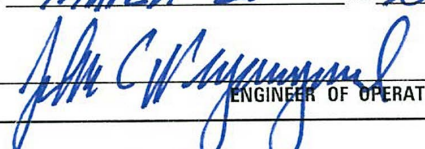


SHEET NO.	DESCRIPTION
1.	COVER SHEET
2.	INDEX OF SHEETS, STANDARDS, GENERAL NOTES & SIGNATURE
3.	SUMMARY OF QUANTITIES
4.	PROJECT LOCATION MAP
5.	SCHEDULE OF QUANTITIES

STANDARDS

STANDARD NO.	DESCRIPTION
701101-05	OFF-ROAD OPERATIONS, MULTILANE, 15' (4.5M) TO 24" (600MM) FROM EDGE OF PAVEMENT
701106-02	OFF-ROAD OPERATIONS, MULTILANE, MORE THAN 15' (4.5M) AWAY
701901-07	LANE CLOSURE, 2L, 2W, DAY OLN, FOR SPEEDS ≥ 45 MPH
701201-04	TRAFFIC CONTROL DEVICES

NOTES:

NO TREES SHALL BE CUT UNTIL AFTER SEPTEMBER 30, 2018.
 ALL TREES HAVE BEEN PAINTED WITH THE NUMBER IN CIRCLE AND THE DIAMETER.

STATE OF ILLINOIS DEPARTMENT OF TRANSPORTATION DIVISION OF HIGHWAYS DISTRICT 6	
EXAMINED	March 29 th 20 18  ENGINEER OF OPERATIONS
EXAMINED	March 8 th 20 18  ENGINEER OF PROJECT IMPLEMENTATION
EXAMINED	March 12 20 18  ENGINEER OF PROGRAM DEVELOPMENT

CODE NO.	ITEM	UNIT	TOTAL QUANTITY	0-02043-6002	0-02043-6002
				100% STATE SANGAMON	100% STATE SANGAMON
				WABASH AVE/172	BUSINESS 55
				LANDSCAPE 0031	LANDSCAPE 0031
				URBAN	URBAN
20100110	TREE REMOVAL (6 TO 15 UNITS DIAMETER)	UNIT	2,769	2,532.5	236.5
20100210	TREE REMOVAL (OVER 15 UNITS DIAMETER)	UNIT	622	356.0	266.0
67100100	MOBILIZATION	L SUM	1	0.8	0.2
70100450	TRAFFIC CONTROL AND PROTECTION, STANDARD 701201	L SUM	1	0.8	0.2

FILE NAME =	USER NAME = sharptd	DESIGNED -	REVISED -
S:\CD\11\ROAD\72K58 - IL-4 Ash Bor	Control - Wabash Ave and I 72\PLANS\72K58	DRAWN - DMS	REVISED -
Default	PLOT SCALE = 40.0000' / in.	CHECKED -	REVISED -
	PLOT DATE = 2/27/2018	DATE -	REVISED -

**STATE OF ILLINOIS
DEPARTMENT OF TRANSPORTATION**

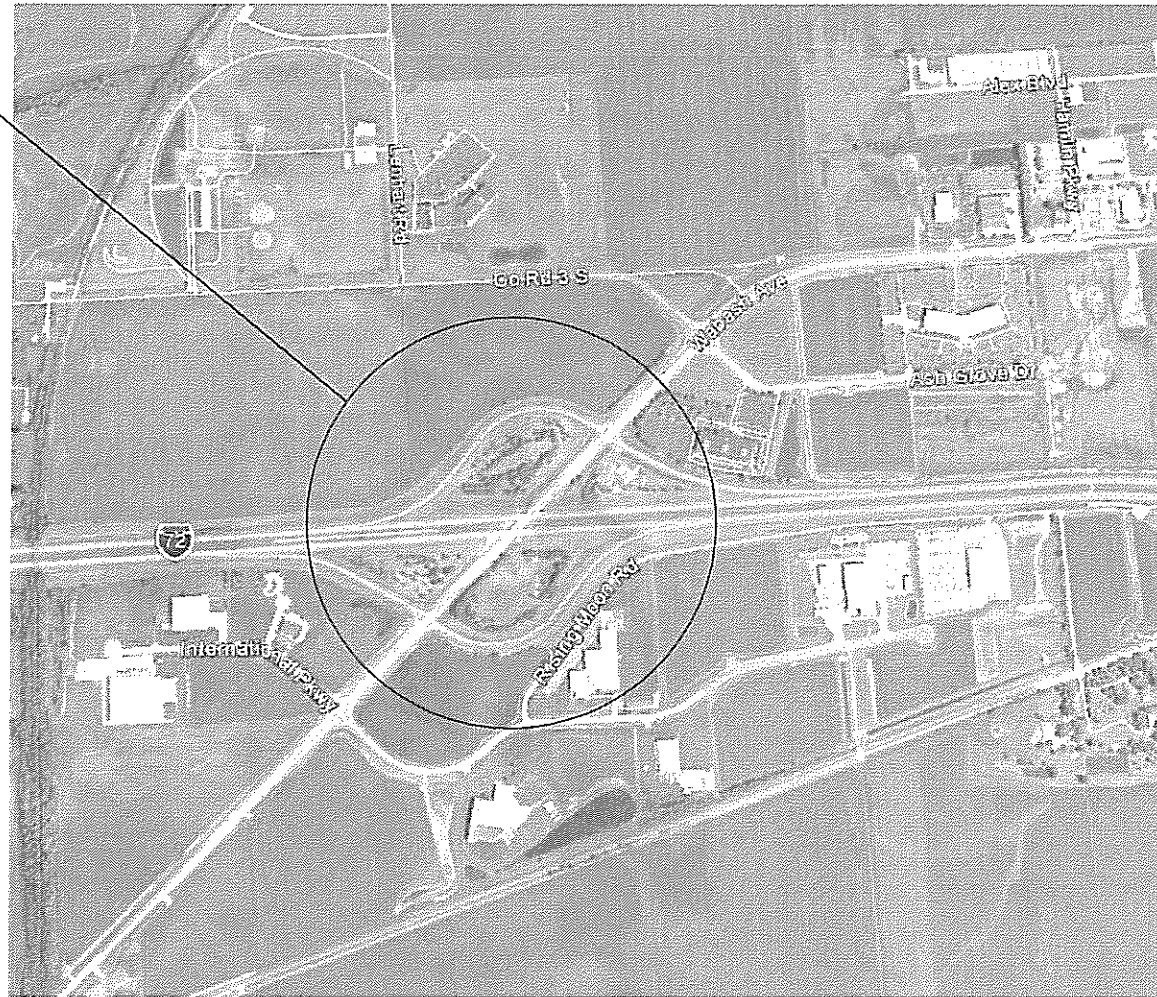
SUMMARY OF QUANTITIES

SCALE: _____ SHEET _____ OF _____ SHEETS STA. _____ TO STA. _____

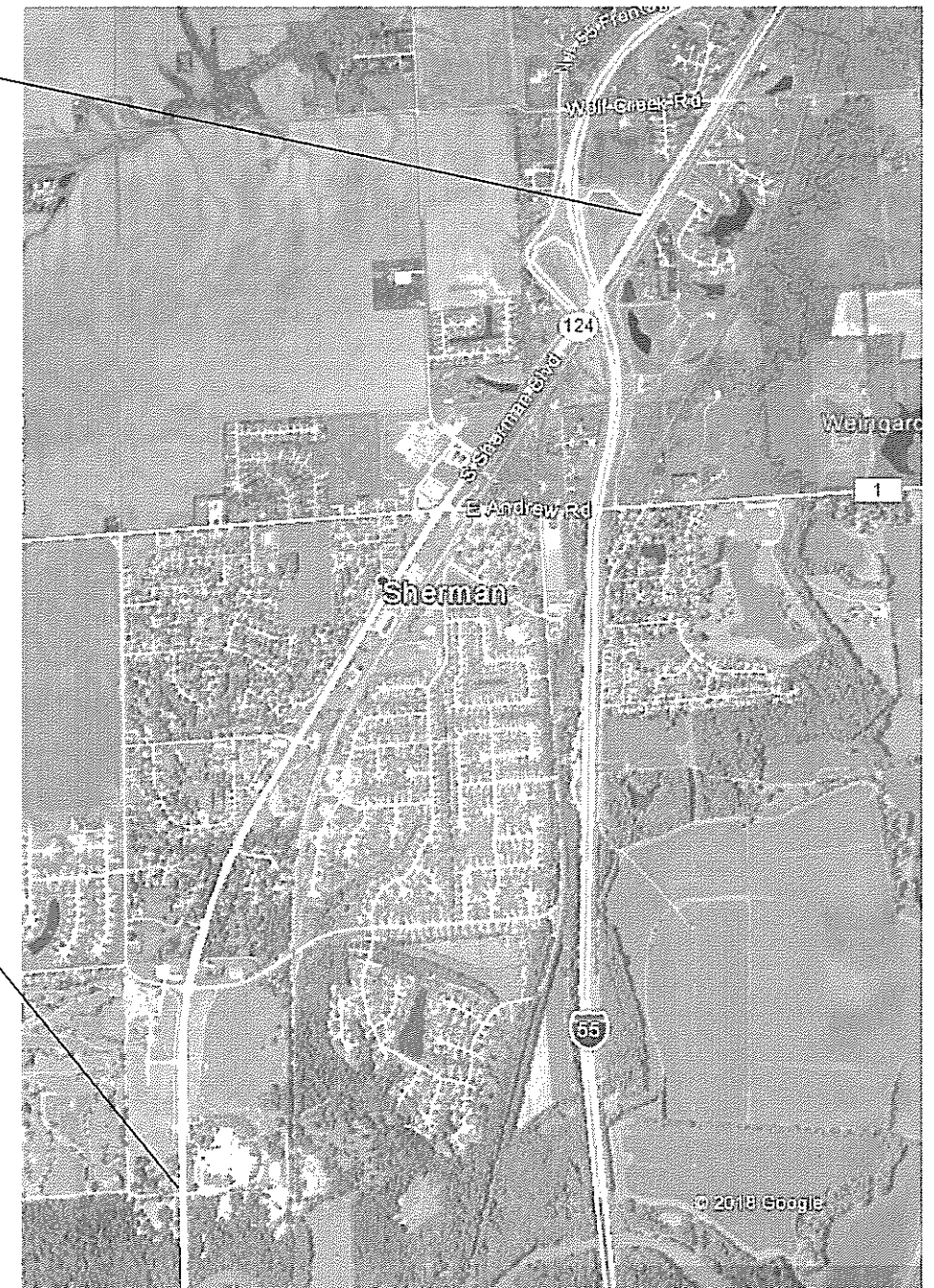
*FAI 72, FAP 666 (I-72, I-55 BUS)

F.A. RTE.	SECTION	COUNTY	TOTAL SHEETS	SHEET NO.
*	(27) TR	SANGAMON	5	3
			CONTRACT NO. 72K58	
ILLINOIS FED. AID PROJECT				

PROJECT
LOCATION
WABASH
AVE/I 72



BEGIN
PROJECT
LOCATION
CARTER BRO.
TO SHERMAN
OVERHEAD



END
PROJECT
LOCATION
CARTER BRO
TO SHERMAN
OVERHEAD

*FAI 55, FAP 666 (I-72, I-55 BUS)

FILE NAME =	USER NAME = sharptd	DESIGNED - _____	REVISED - _____
S:\CDTRMAINT.CAD\72K58 - IL-4 Ash Bore	Control - Wabash Ave and I 72\PLANS\72K58	DRAN\lans.dgn	REVISED - _____
Default	PLOT SCALE = 40.0000' / in.	CHECKED - _____	REVISED - _____
	PLOT DATE = 3/27/2018	DATE - _____	REVISED - _____

**STATE OF ILLINOIS
DEPARTMENT OF TRANSPORTATION**

LOCATION MAP

SCALE: _____ SHEET _____ OF _____ SHEETS STA. _____ TO STA. _____

F.A. RTE.	SECTION	COUNTY	TOTAL SHEETS	SHEET NO.
•	(27) TR	SANGAMON	5	4
			CONTRACT NO. 72K58	
ILLINOIS FED. AID PROJECT				

SE QUAD - WABASH AVE/I 72		
MARKED NUMBER	6 TO 15 UNITS DIAMETER (UNITS)	OVER 15 UNITS DIAMETER (UNITS)
1	6	
2	10	
3	10	
4	6	
5	9	
6	10	
7	8	
8	11	
9	10	
10	11	
11	6	
12	6	
13	6.5	
14	7	
15	6	
16	7.5	
17	10	
18	6	
19	9	
20	8	
21	6	
22	6	
23	9	
24	7	
25	8.5	
26	9	
27	7.5	
28	8	
29	7.5	
30	7	
31	10	
32	6.5	
33	6	
34	12	
35	7.5	
36	6.5	
SUB TOTAL	287	0

SE QUAD - WABASH AVE/I 72		
MARKED NUMBER	6 TO 15 UNITS DIAMETER (UNITS)	OVER 15 UNITS DIAMETER (UNITS)
37	7	
38	8.5	
39	12	
40	9	
41	10	
42	8	
43	5.5	
44	8	
45	13	
46	7.5	
47	8	
48	8	
49	8	
50	8	
51	7.5	
52	7.5	
53	8.5	
54	8.5	
55	6.5	
56	9	
57	15	
58	11	
59	9	
60	5.5	
61	6	
62	6	
63	8	
64	10	
65	7.5	
66	13	
67	7.5	
68	6	
69	6	
70	5	
71	6	
72	9	
SUB TOTAL	298.5	0

SE QUAD - WABASH AVE/I 72		
MARKED NUMBER	6 TO 15 UNITS DIAMETER (UNITS)	OVER 15 UNITS DIAMETER (UNITS)
73	8	
74	6.5	
75	8	
76	9	
77	8.5	
78	5.5	
79	13.5	
80	5	
81	9.5	
82	7	
83	8	
84	6	
85	10	
86	6	
87	11.5	
88	9.5	
89	9	
90	8	
91	8.5	
92	7.5	
93	5.5	
94	6.5	
95	11.5	
96	8.5	
97	9	
98	7.5	
99	12.5	
100	6.5	
101	12	
102	13	
103	14	
104	5	
105	7.5	
106	8	
107	13	
108	8	
SUB TOTAL	312.5	0

SE QUAD - WABASH AVE/I 72		
MARKED NUMBER	6 TO 15 UNITS DIAMETER (UNITS)	OVER 15 UNITS DIAMETER (UNITS)
109	5	
110	9	
111	9.5	
112	7.5	
113	9	
114	7	
115	10	
116	7.5	
117		
118		
119		
120	10.5	
121	9	
122	11	
123	5	
124	11.5	
125	12.5	
126	7	
127	12	
128	11.5	
129	9	
130	10	
131	12	
132	11.5	
133	10	
134	9	
135	5	
136	10	
137	6.5	
138	8	
139	14	
140	10.5	
141		23
142	10	
143	14	
144	12	
SUB TOTAL	306	23

SE QUAD - WABASH AVE/I 72		
MARKED NUMBER	6 TO 15 UNITS DIAMETER (UNITS)	OVER 15 UNITS DIAMETER (UNITS)
145		18.5
146		16.5
147		23
148	10	
149	10.5	
150	13	
151	11	
152	9.5	
153	12.5	
154	8	
155	8	
156	7	
157	11	
158	8	
159	6.5	
160	9	
161	9	
162	5	
163	6.5	
164	5	
165	7	
166	6.5	
167	6	
168	8.5	
169	9.5	
170	5	
171	5	
172	12	
173	7	
174	10.5	
175	6	
176	9	
177	10.5	
178	10	
179	7	
180		17
SUB TOTAL	269	75

SE QUAD - WABASH AVE/I 72		
MARKED NUMBER	6 TO 15 UNITS DIAMETER (UNITS)	OVER 15 UNITS DIAMETER (UNITS)
181	7.5	
182	7.5	
183	14	
184	13	
185	8	
186	8.5	
187	7.5	
188	6.5	
189	13	
190	5.5	
191	15	
192	10	
193	9	
194	11.5	
195	15	
196	11	
197	11	
198	10.5	
199	11.5	
200	12	
201	11.5	
202	12	
203	13.5	
204	14	
205	15	
206	13	
207	12	
208	11	
209		18
210	13	
211	13	
212		22
213	7	
214	14	
215	11	
216	6	
SUB TOTAL	371.5	40

SE QUAD - WABASH AVE/I 72		
MARKED NUMBER	6 TO 15 UNITS DIAMETER (UNITS)	OVER 15 UNITS DIAMETER (UNITS)
217	9	
218		16.5
219	11	
220		18.5
221	14	
222	9.5	
223	11.5	
224		17
225		16
226	10	
227	10.5	
228	13	
229	9	
230	9	
231	9.5	
232	10	
233	13.5	
234	11	
235	10	
236	9	
237	11.5	
238	7.5	
SUB TOTAL	188.5	68
SE QUAD TOTAL	2033	206

BUSINESS 55 - CARTER BROTHERS TO NORTH OF SHERMAN OVERHEAD		
MARKED NUMBER	6 TO 15 UNITS DIAMETER (UNITS)	OVER 15 UNITS DIAMETER (UNITS)
1		17.5
2	14	
3		21
4		31
5	6	
6	14	
7		36
8		29
9	3	
10		17
11		20
12		20
13		41
14		16.5
15		17
16	14.5	
17	9	
18	8	
19	11	
20	8	
21	14.5	
22	15	
23	7.5	
24	12.5	
25	9.5	
26	11.5	
27	14	
28	15	
29	15	
30	5	
31	10.5	
32	13.5	
33	5.5	
TOTAL	236.5	266

NW QUAD - WABASH AVE/I 72		
MARKED NUMBER	6 TO 15 UNITS DIAMETER (UNITS)	OVER 15 UNITS DIAMETER (UNITS)
1	15.5	
2	7.5	
3	13	
4	11	
5	10	
6	7	
7	5.5	
8	5.5	
9	6	
10	11	
11	9.5	
12	8	
13	8.5	
14	8	
15	7	
16	8	
17	13	
18	9.5	
19	11.5	
20	7	
21	11	
22	11	
23	12	
24	14.5	
25	9.5	
26	14.5	
27	11.5	
28	8	
29	12	
30	10	
31		16.5
32	10	
33	6	
34	7	
35	7	
36	6	
37	7.5	
38	5	
39	7.5	
40	10	
TOTAL	362	16.5

NE QUAD - WABASH AVE/I 72		
MARKED NUMBER	6 TO 15 UNITS DIAMETER (UNITS)	OVER 15 UNITS DIAMETER (UNITS)
1	15	
2	11.5	
3	11.5	
4		26
5	10	
6		32
7	10	
8	13	
9	12.5	
10	10	
11	10	
12	5	
13		21
14	14	
15		17
16	15	
17		17.5
18		20
TOTAL	137.5	133.5

TOTAL 6 TO 15 UNITS DIAMETER	TOTAL OVER 15 UNITS DIAMETER
2769	622

*FAI 72, FAP 666 (1-72, 1-55 BUS)

FILE NAME = S:\CONTRM\HNTCAD\72K58 - IL-4 Ash Bore	USER NAME = sharptd	DESIGNED -	REVISED -
Default	Control - Wabash Ave and I 72\PLANS\72K58	CHECKED -	REVISED -
	PLOT SCALE = 3/8000' / in.	DATE -	REVISED -
	PLOT DATE = 3/27/2018		

**STATE OF ILLINOIS
DEPARTMENT OF TRANSPORTATION**

SCHEDULES

SCALE: SHEET OF SHEETS STA. TO STA.

F.A. RTE.	SECTION	COUNTY	TOTAL SHEETS	SHEET NO.
*	(27) TR	SANGAMON	5	5
CONTRACT NO. 72K58			ILLINOIS FED. AID PROJECT	