

STATE OF ILLINOIS  
DEPARTMENT OF TRANSPORTATION

F.A.P. RTE.	SECTION	COUNTY	TOTAL SHEETS	SHEET NO.
646	(104)RS-6	BUREAU	14	1
		ILLINOIS	CONTRACT NO. 66J22	

**INDEX OF SHEETS**

SHEET NO.	DESCRIPTION
1	COVER SHEET
2	GENERAL NOTES & LOCATION
3-5	SUMMARY OF QUANTITIES
6-8	TYPICAL SECTIONS
9	SCHEDULES
10-12	PAVEMENT MARKING PLAN
13-14	DETAILS

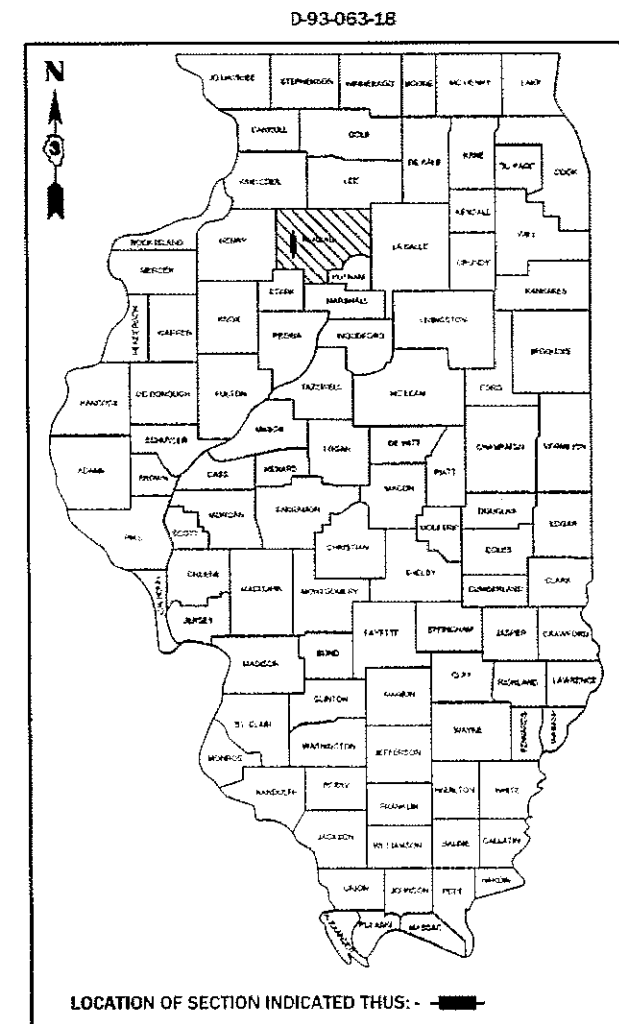
**LIST OF ILLINOIS DOT HIGHWAY STANDARDS**

000001-06	STANDARD SYMBOLS, ABBREVIATIONS AND PATTERNS
001001-02	AREAS OF REINFORCEMENT BARS
701001-02	OFF-ROAD OPERATIONS 2L, 2W, MORE THAN 15' (4.5 m) AWAY
701006-05	OFF-ROAD OPERATIONS 2L, 2W, 15' (4.5 m) TO 24" (600 mm) FROM PAVEMENT EDGE
701301-04	LANE CLOSURE, 2L, 2W, SHORT TIME OPERATIONS
701306-04	LANE CLOSURE, 2L, 2W, SLOW MOVING OPERATIONS DAY ONLY, FOR SPEEDS ≥ 45 MPH
701311-03	LANE CLOSURE, 2L, 2W, MOVING OPERATIONS - DAY ONLY
701901-07	TRAFFIC CONTROL DEVICES
790001-05	TYPICAL PAVEMENT MARKINGS
781001-04	TYPICAL APPLICATIONS RAISED REFLECTIVE PAVEMENT MARKERS

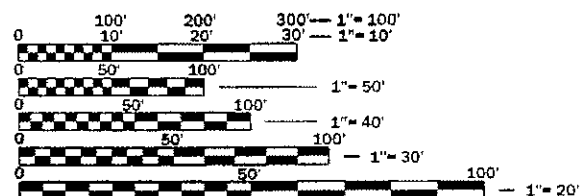
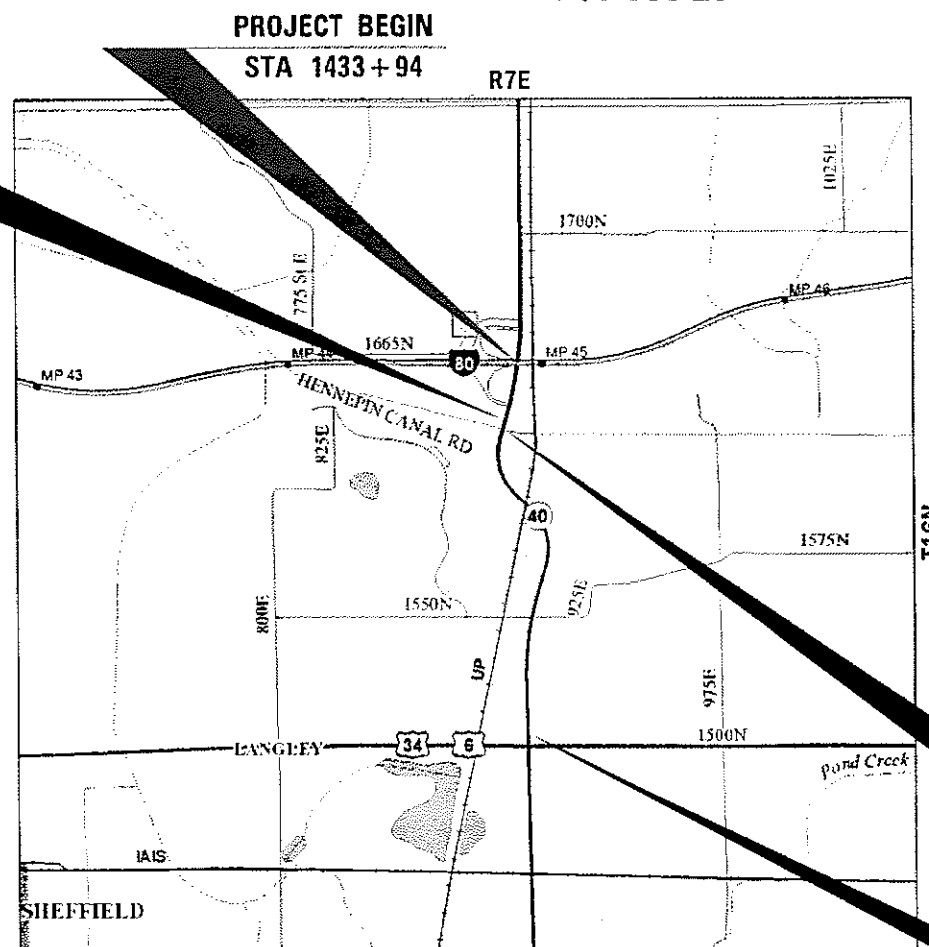
**PROPOSED  
HIGHWAY PLANS**

F.A.P. ROUTE 646 (IL 40)  
SECTION (104)RS-6  
PROJECT STP-FRAZ(587)  
SMART MILLING AND RESURFACING  
BUREAU COUNTY

C-93-068-18



**STATION EQUATION**  
 $1444 + 28.05(BK) = 1444 + 32.76(AH)$



FULL SIZE PLANS HAVE BEEN PREPARED USING STANDARD ENGINEERING SCALES. REDUCED SIZED PLANS WILL NOT CONFORM TO STANDARD SCALES. IN MAKING MEASUREMENTS ON REDUCED PLANS, THE ABOVE SCALES MAY BE USED.

J.U.L.I.E.  
JOINT UTILITY LOCATION INFORMATION FOR EXCAVATION  
1-800-892-0123  
OR 811

PROJECT ENGINEER: BRAD DUNCAN, P.E.  
UNIT CHIEF: JESSY JEAN  
DISTRICT 3 NO. (815) 434-6131  
CONTRACT NO. 66J22

GROSS LENGTH = 7916.29 FT. = 1.499 MILE  
NET LENGTH = 7701.69 FT. = 1.459 MILE

PROJECT END  
STA 1513+15

STRUCTURE OMISSION  
STA 1446+08.75 TO 1448+23.35

FUNCTIONAL CLASSIFICATION  
RURAL MINOR ARTERIAL  
2018 ADT = 2300

P.V. = 45.87% S.U. = 5.22% M.U. = 48.91%

STATE OF ILLINOIS  
DEPARTMENT OF TRANSPORTATION

SUBMITTED 03/20/2018  
*Kevin Smith* REGIONAL ENGINEER

May 11, 2018  
*David P. Chisholm* ENGINEER OF DESIGN AND ENVIRONMENT

May 11, 2018  
*David P. Chisholm* DIRECTOR OF HIGHWAYS PROJECT IMPLEMENTATION

PRINTED BY THE AUTHORITY  
OF THE STATE OF ILLINOIS

### GENERAL NOTES

THE THICKNESS OF HMA SHOWN ON THE PLANS IS THE NOMINAL THICKNESS. DEVIATIONS FROM THE NOMINAL THICKNESS WILL BE PERMITTED WHEN SUCH DEVIATIONS OCCUR DUE TO IRREGULARITIES IN THE EXISTING SURFACE OR BASE ON WHICH THE HMA IS PLACED.

THE HMA SURFACE OF ALL MAILBOX TURNOUTS, PRIVATE ENTRANCES, COMMERCIAL ENTRANCES, AND SIDE ROADS SHALL BE MADE NEATLY, IN A WORKMANLIKE MANNER, AND SHALL ACCURATELY CONFORM TO THE SHAPES AND DIMENSIONS SHOWN ON THE PLAN DETAILS. IF REQUIRED BY THE ENGINEER, THE CONTRACTOR SHALL SAW CUT THE HMA SURFACE TO CONFORM TO THE SHAPES AND DIMENSIONS SHOWN ON THE PLAN DETAILS. THIS WORK WILL BE INCLUDED IN THE COST OF THE HMA SURFACE.

THE ENGINEER WILL BE THE SOLE JUDGE CONCERNING CURING TIME FOR THE VARIOUS HMA LIFTS.

THE FOLLOWING RATES OF APPLICATION HAVE BEEN USED IN CALCULATING PLAN QUANTITIES:

GRANULAR MATERIALS	2.05	TONS / CU YD
HMA RESURFACING	112	LBS / 50 YD / IN
SHORT TERM PAVEMENT MARKING	10	FT / 100 FT OF APPLICATION
MIX FOR CRACKS, JTS & FLGWYS	0.0003	TONS / 50 YD

THE CONTRACTOR SHALL CONTACT JULIE AT LEAST 48 HOURS PRIOR TO EXCAVATION TO DETERMINE WHICH UTILITIES ARE IN THE AREA.

### ENVIRONMENTAL NOTES

ANY/ALL EXCAVATED EARTHEN MATERIAL MUST REMAIN ON SITE.

STATE OF ILLINOIS  
DEPARTMENT OF TRANSPORTATION  
DISTRICT THREE  
AS BUILT INFORMATION

\_\_\_\_\_  
SUPERVISING CONSTRUCTION FIELD ENGINEER

\_\_\_\_\_  
RESIDENT ENGINEER / TECHNICIAN

START & END DATES  
OF CONSTRUCTION:

INSPECTORS:

STATE OF ILLINOIS  
DEPARTMENT OF TRANSPORTATION  
DISTRICT THREE

PREPARED BY: *Dr. Benic*  
DISTRICT STUDIES & PLANS ENGINEER

DATE: 3-22-18

EXAMINED BY: *Kyle Walsh*  
DISTRICT CONSTRUCTION ENGINEER

*Michael Christa*  
DISTRICT MATERIALS ENGINEER

*Paul Hines*  
DISTRICT OPERATIONS ENGINEER

FILE NAME *	USER NAME * jiang	DESIGNED -	REVISIONS -	<b>STATE OF ILLINOIS DEPARTMENT OF TRANSPORTATION</b>	<b>GENERAL NOTES AND COMMITMENTS</b>	F.A.P. RTE.	SECTION	COUNTY	TOTAL SHEETS	SHEET NO.	
PROJECT ID	PROJECT NAME	DRAWN -	REVISIONS -			646	(104)RS-6	BUREAU	14	2	
PLOT SCALE * 100.0000 1 in.	CHECKED -	REVISIONS -	SCALE:			SHEET 1 OF 1 SHEETS STA. TO STA.		[ILLINOIS] FED. AID PROJECT			
PLOT DATE * 3/21/2018	DATE -	REVISIONS -									

CODE NO.	ITEM	UNIT	TOTAL QUANTITY	CONSTR. CODE	
				80% FEDERAL 20% STATE ROADWAY 0005 STP-RURAL	
40200800	AGGREGATE SURFACE COURSE, TYPE B	TON	18	18	
40600400	MIXTURE FOR CRACKS, JOINTS, AND FLANGEWAYS	TON	7	7	
40600990	TEMPORARY RAMP	SQ YD	43	43	
40603315	HOT-MIX ASPHALT SURFACE COURSE, MIX "C", N70	TON	2160	2160	
40700100	BITUMINOUS MATERIALS (TACK COAT)	POUND	11575	11575	
44000155	HOT-MIX ASPHALT SURFACE REMOVAL, 1 1/2"	SQ YD	24906	24906	
48102100	AGGREGATE WEDGE SHOULDER, TYPE B	TON	49	49	
67000400	ENGINEER'S FIELD OFFICE, TYPE A	CAL MO	1	1	
67100100	MOBILIZATION	L SUM	1	1	
70100460	TRAFFIC CONTROL AND PROTECTION, STANDARD 701306	L SUM	1	1	
70300100	SHORT TERM PAVEMENT MARKING	FOOT	5126	5126	
70300150	SHORT TERM PAVEMENT MARKING REMOVAL	SQ FT	854	854	
70300220	TEMPORARY PAVEMENT MARKING - LINE 4"	FOOT	27808	27808	
70300240	TEMPORARY PAVEMENT MARKING - LINE 6"	FOOT	598	598	

14

\* SPECIALTY ITEMS

MODEL Default FILE NAME: \\P:\ILLINOIS\BIDDING\DOT Office\Bldg\3\Project\66622\CAD\Drawings\66622-11-500.dgn	USER NAME = jeanj	DESIGNED -	REVISED -	<b>STATE OF ILLINOIS DEPARTMENT OF TRANSPORTATION</b>	<b>SUMMARY OF QUANTITIES</b>			F.A.P. RTE.	SECTION	COUNTY	TOTAL SHEETS	SHEET NO.
PLOT SCALE = 100.0000' / in.	CHECKED -	REVISED -	REVISED -					646	(104)RS-6	BUREAU	14	3
PLOT DATE = 3/21/2018	DATE -	REVISED -	REVISED -		SCALE:	SHEET 1	OF 3 SHEETS	STA.	TO STA.	CONTRACT NO. 66J22		
										ILLINOIS FED. AID PROJECT		

CODE NO.	ITEM	UNIT	TOTAL QUANTITY	CONSTR. CODE	
				80% FEDERAL 20% STATE ROADWAY 0005 STP-RURAL	
70300250	TEMPORARY PAVEMENT MARKING - LINE 8"	FOOT	109	109	
70300260	TEMPORARY PAVEMENT MARKING - LINE 12"	FOOT	33	33	
70300280	TEMPORARY PAVEMENT MARKING - LINE 24"	FOOT	36	36	
* 78008210	POLYUREA PAVEMENT MARKING TYPE I - LINE 4"	FOOT	55616	55616	
* 78008230	POLYUREA PAVEMENT MARKING TYPE I - LINE 6"	FOOT	1195	1195	
* 78008240	POLYUREA PAVEMENT MARKING TYPE I - LINE 8"	FOOT	218	218	
* 78008250	POLYUREA PAVEMENT MARKING TYPE I - LINE 12"	FOOT	66	66	
* 78008270	POLYUREA PAVEMENT MARKING TYPE I - LINE 24"	FOOT	72	72	
* 78100100	RAISED REFLECTIVE PAVEMENT MARKER	EACH	101	101	
78300200	RAISED REFLECTIVE PAVEMENT MARKER REMOVAL	EACH	101	101	
X0327980	PAVEMENT MARKING REMOVAL - WATER BLASTING	SQ FT	9746	9746	
X4401198	HOT-MIX ASPHALT SURFACE REMOVAL, VARIABLE DEPTH	SQ YD	814	814	
Z0030850	TEMPORARY INFORMATION SIGNING	SQ FT	42	42	
Z0033700	LONGITUDINAL JOINT SEALANT	FOOT	7702	7702	

14

MODEL: D:\fruit  
FILE NAME: E:\1104\646\BID\ITEG\_1104\646\DOT\Documents\DOT\_Office\BID\ITEG\_1104\646\DOT\646\22-ITS-500.dgn

USER NAME = jeanj	DESIGNED -	REVISED -
PLOT SCALE = 100.0000' / in.	DRAWN -	REVISED -
PLOT DATE = 3/21/2018	CHECKED -	REVISED -
	DATE -	REVISED -

**STATE OF ILLINOIS  
DEPARTMENT OF TRANSPORTATION**

**SUMMARY OF QUANTITIES**

SCALE: SHEET 2 OF 3 SHEETS STA. TO STA.

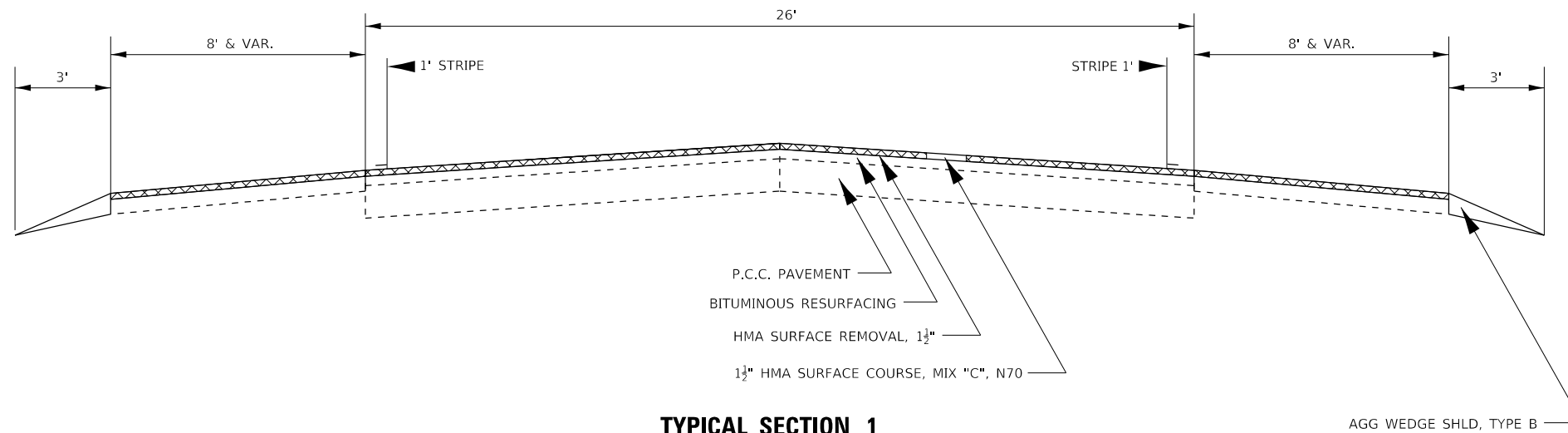
F.A.P. RTE. 646	SECTION (104)RS-6	COUNTY BUREAU	TOTAL SHEETS 14	SHEET NO. 4
CONTRACT NO. 66J22			ILLINOIS FED. AID PROJECT	

CODE NO.	ITEM	UNIT	TOTAL QUANTITY	CONSTR. CODE
				80% FEDERAL 20% STATE ROADWAY 0005 STP-RURAL
Z0048665	RAILROAD PROTECTIVE LIABILITY INSURANCE	L SUM	1	1

\* SPECIALTY ITEMS

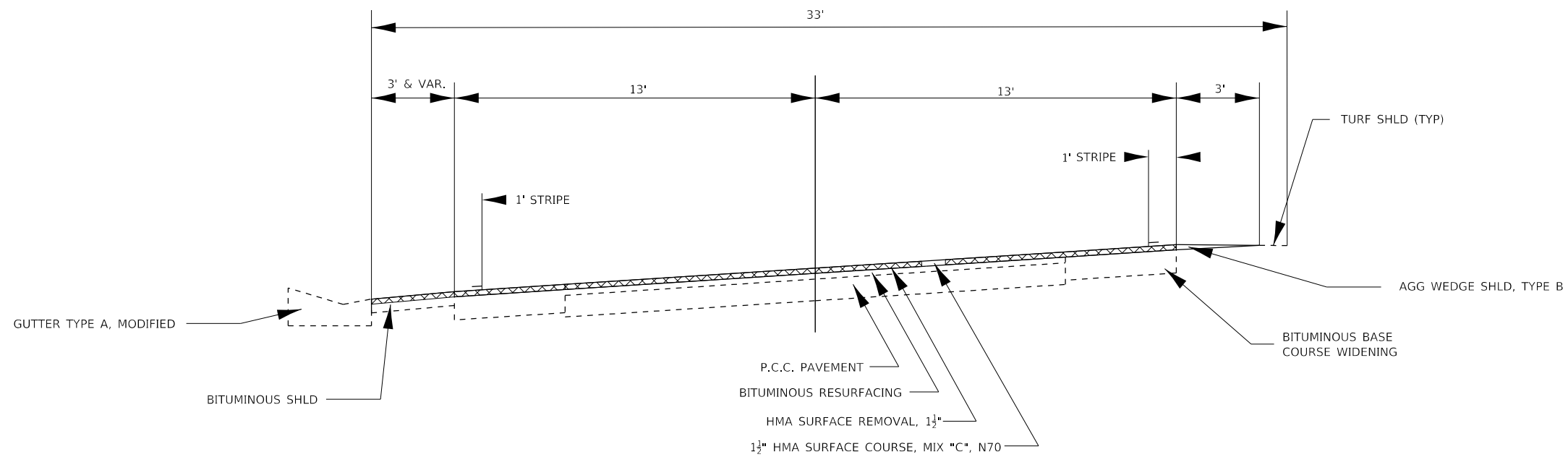
MODEL: D:\p\m\p\...  
FILE NAME: ...

USER NAME = jeanj	DESIGNED -	REVISED -	<b>STATE OF ILLINOIS DEPARTMENT OF TRANSPORTATION</b>	<b>SUMMARY OF QUANTITIES</b>		F.A.P. RTE.	SECTION	COUNTY	TOTAL SHEETS	SHEET NO.
PLOT SCALE = 100.0000' / in.	DRAWN -	REVISED -				646	(104)RS-6	BUREAU	14	5
PLOT DATE = 3/21/2018	CHECKED -	REVISED -		SCALE: SHEET 3 OF 3 SHEETS STA. TO STA.		CONTRACT NO. 66J22		ILLINOIS FED. AID PROJECT		
	DATE -	REVISED -								



**TYPICAL SECTION 1**

STA. 1433+94 - STA. 1446+08.75



**TYPICAL SECTION 2**

STA. 1448+23.35 - 1457+00 (W/O GUTTER)  
 STA. 1457+00 - 1461+85 (W/GUTTER ON LEFT)  
 STA. 1484+74 - 1502+37 (W/O GUTTER)

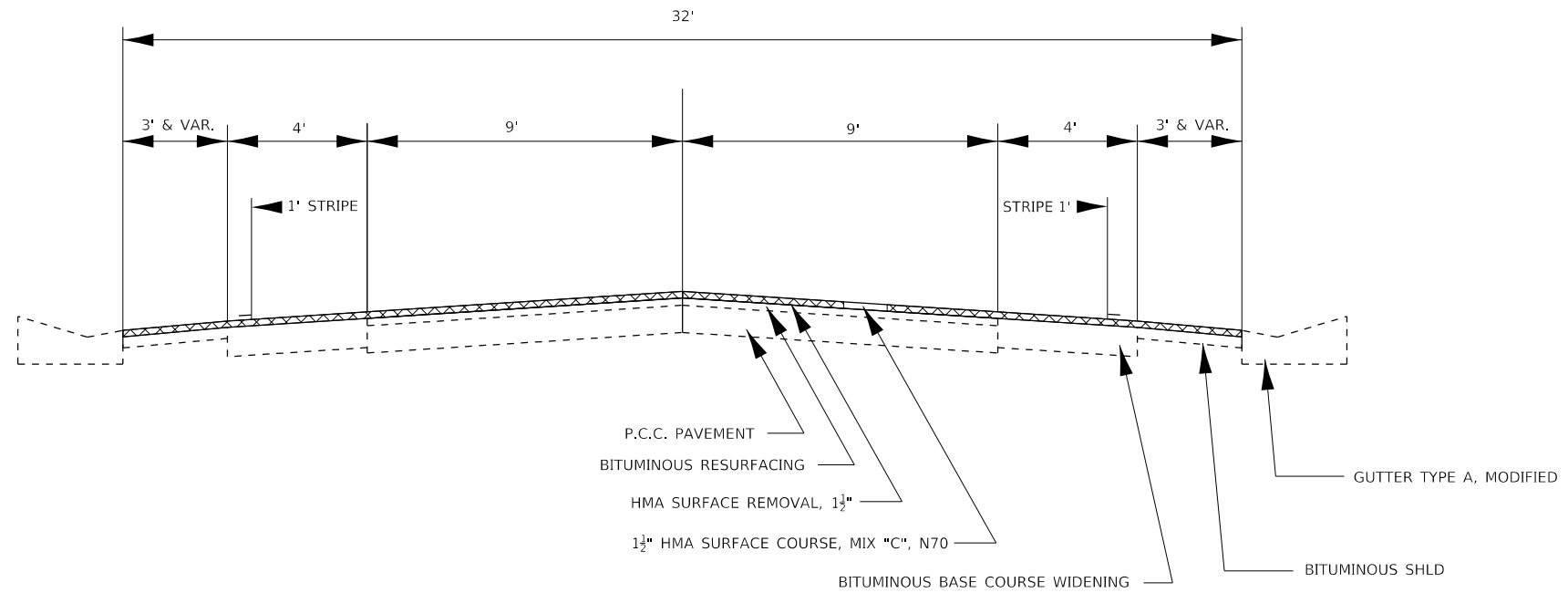
MODEL: Default  
 FILE: \\nas01.cba.eidnet.ec Illinois.gov\PIWDOT\Documents\DOT\_Offices\Director\3\Projects\1036622\CADD\BIDD\36622-pts-typical.dgn

USER NAME = jeanj	DESIGNED - _____	REVISED - _____
	DRAWN - _____	REVISED - _____
PLOT SCALE = 100,0000' / in.	CHECKED - _____	REVISED - _____
PLOT DATE = 3/21/2018	DATE - _____	REVISED - _____

**STATE OF ILLINOIS  
 DEPARTMENT OF TRANSPORTATION**

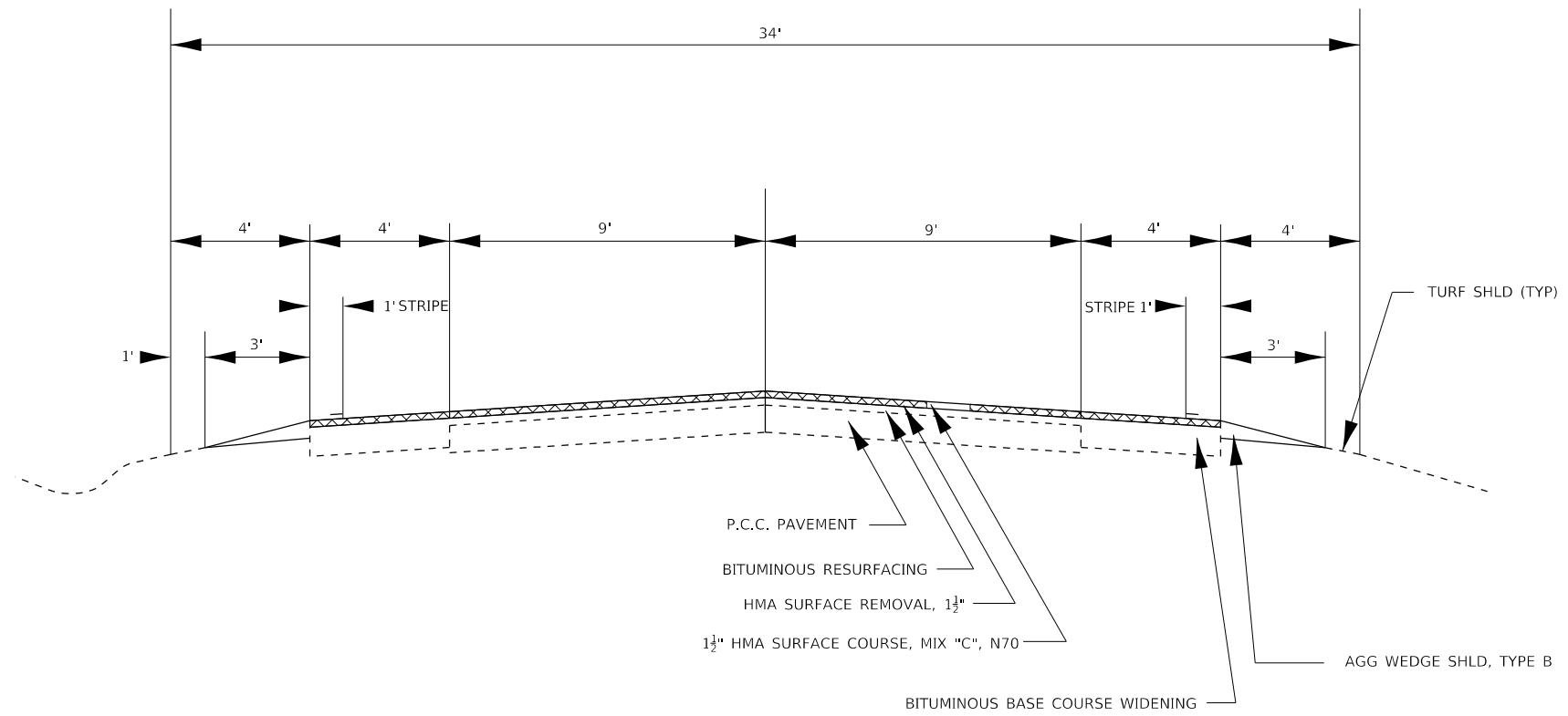
<b>TYPICAL SECTIONS</b>	
SCALE:	SHEET 1 OF 3 SHEETS STA. TO STA.

F.A.P. RTE.	SECTION	COUNTY	TOTAL SHEETS	SHEET NO.
646	(104)RS-6	BUREAU	14	6
CONTRACT NO. 66J22				
ILLINOIS FED. AID PROJECT				



**TYPICAL SECTION 3**

STA. 1461+85 - 1462+87 (W/GUTTER ON LEFT ONLY)  
 STA. 1462+87 - 1464+38 (W/ GUTTER ON BOTH SIDES)  
 STA. 1464+38 - 1464+62 (W/ GUTTER ON RIGHT ONLY)  
 STA. 1478+20 - 1479+16 (W/GUTTER ON RIGHT ONLY)



**TYPICAL SECTION 4**

STA. 1464+62 - 1465+20  
 STA. 1479+16 - 1484+74  
 STA. 1502+37 - 1510+18

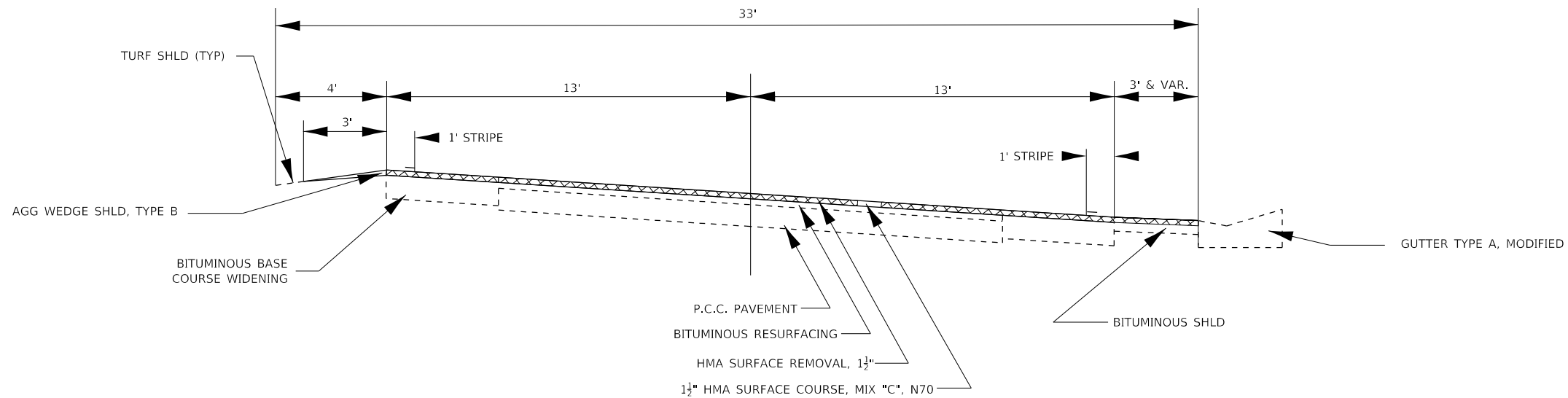
MODEL: Default  
 FILE: \\mhc-pw\ill08\EBID\NTEC\Illinois.gov\FWIDOT\Documents\DOT\_Offices\Director\3\Projects\10366722\CADD\Drawn\10366722-rh-typical.dgn

USER NAME = jeanj	DESIGNED - _____	REVISED - _____
	DRAWN - _____	REVISED - _____
PLOT SCALE = 100,0000' / in.	CHECKED - _____	REVISED - _____
PLOT DATE = 3/21/2018	DATE - _____	REVISED - _____

**STATE OF ILLINOIS  
 DEPARTMENT OF TRANSPORTATION**

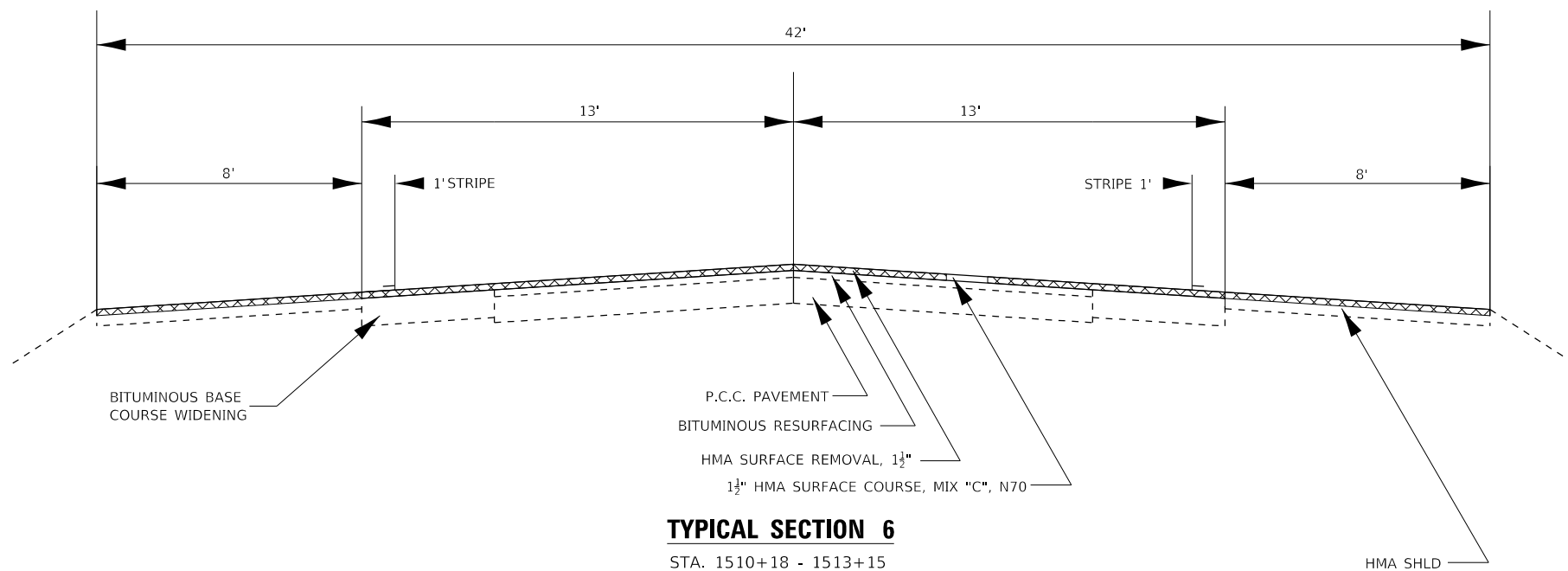
TYPICAL SECTIONS	
SCALE:	SHEET 2 OF 3 SHEETS STA. TO STA.

F.A.P. RTE.	SECTION	COUNTY	TOTAL SHEETS	SHEET NO.
646	(104)RS-6	BUREAU	14	7
CONTRACT NO. 66J22				
ILLINOIS FED. AID PROJECT				



**TYPICAL SECTION 5**

STA. 1465+20 - 1467+64 (W/O GUTTER)  
 STA. 1467+64 - 1471+36 (W/ GUTTER ON RIGHT)  
 STA. 1471+36 - 1475+44 (W/O GUTTER)  
 STA. 1475+44 - 1478+20 (W/ GUTTER ON RIGHT)



**TYPICAL SECTION 6**

STA. 1510+18 - 1513+15

HMA MIXTURE REQUIREMENT TABLE		
LOCATION(S):	ENTIRE LOCATION	ENTIRE LOCATION
MIXTURE USE(S):	HMA SHOULDERS	HMA SURFACE
BINDER GRADE (PG):	PG 64-22	PG 64-22
DESIGN AIR VOIDS:	4.0% @ N70	4.0% @ N70
MIXTURE COMPOSITION: (MIXTURE GRADATION)	1L 9.5	1L 9.5
FRICTION AGGREGATE:	MIXTURE C	MIXTURE C
MIXTURE WEIGHT:	112.0 LB/SY/IN	112.0 LB/SY/IN
QUALITY MANAGEMENT PROGRAM:	QCQA	QCQA
SUBLOT SIZE:	NA	NA
DENSITY TEST METHOD:	CORES	CORES

MODEL: Default  
 FILE: \\mshpc-pw\pww\DOT\Documents\1001\11\104RS-6\104RS-6-TYPICAL.dgn

USER NAME = jeanj	DESIGNED - _____	REVISED - _____
	DRAWN - _____	REVISED - _____
PLOT SCALE = 100.0000' / in.	CHECKED - _____	REVISED - _____
PLOT DATE = 3/21/2018	DATE - _____	REVISED - _____

**STATE OF ILLINOIS  
 DEPARTMENT OF TRANSPORTATION**

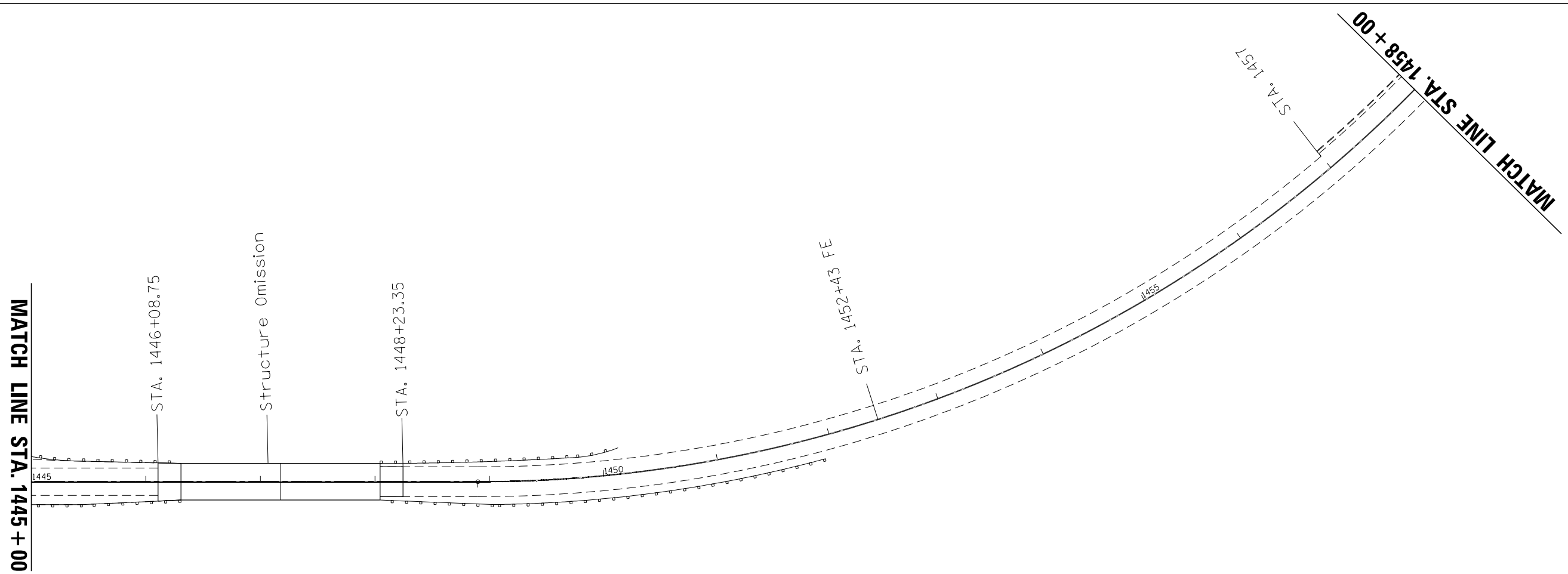
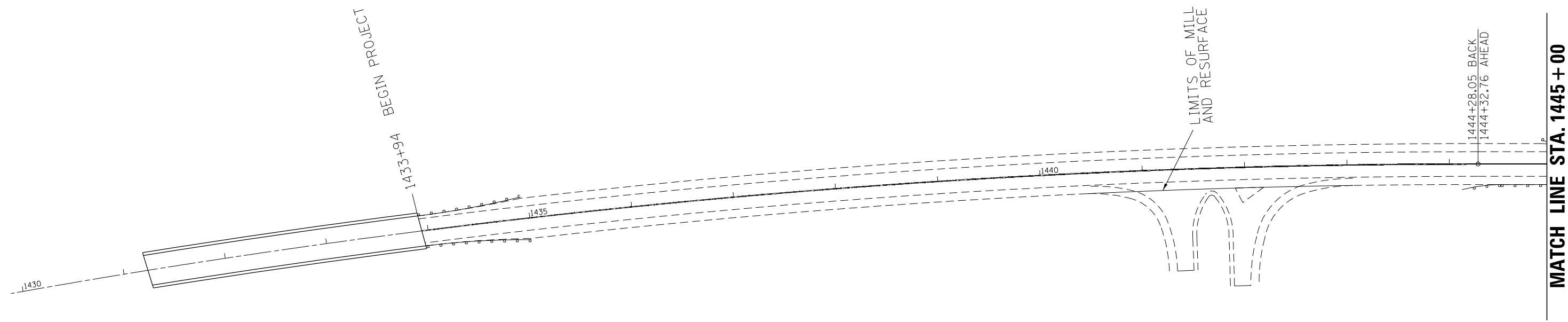
**TYPICAL SECTIONS**

SCALE: SHEET 3 OF 3 SHEETS STA. TO STA.

F.A.P. RTE.	SECTION	COUNTY	TOTAL SHEETS	SHEET NO.
646	(104)RS-6	BUREAU	14	8
			CONTRACT NO. 66J22	
		ILLINOIS	FED. AID PROJECT	







MODEL: Default  
 FILE: \\nas01.psu.edu\l08a\EBID\NTEC\Illinois\pov\PWD\DOT\Documents\1\DOT\_Offices\DI\Dirct 3\Projects\1036622\CAD\Drawn\1036622-rfc.dgn

**MATCH LINE STA. 1445 + 00**

STA. 1446+08.75

Structure Omission

STA. 1448+23.35

STA. 1452+43 FE

STA. 1457

**MATCH LINE STA. 1458 + 00**

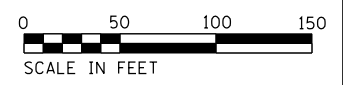
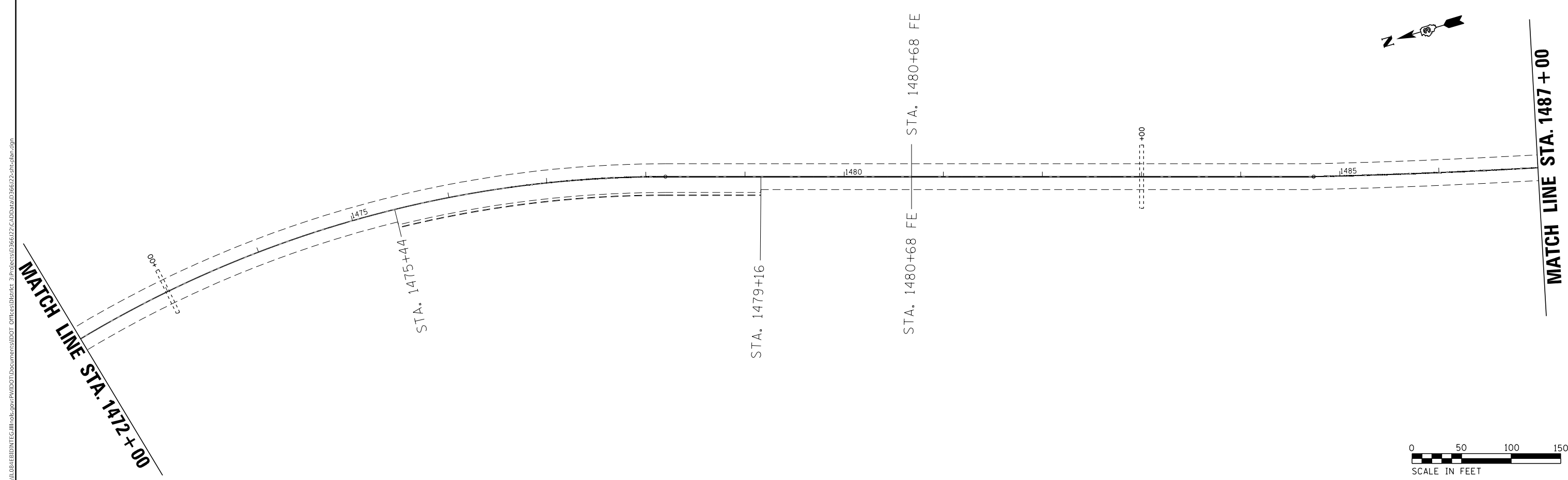
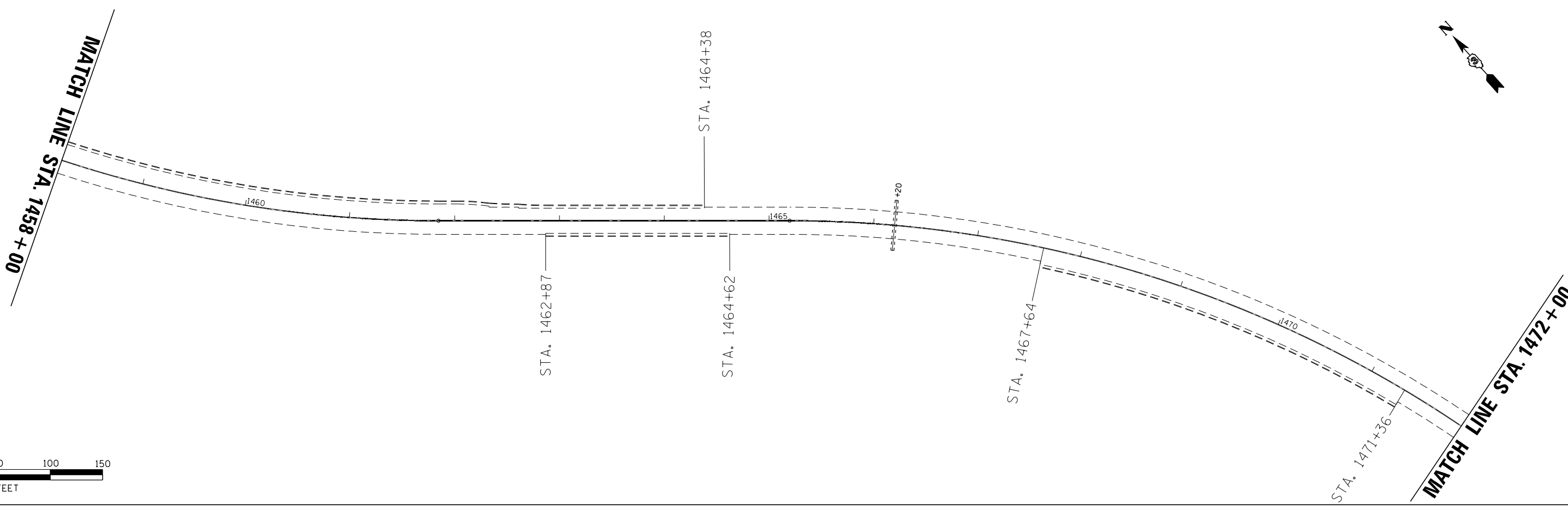
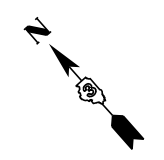
USER NAME = jeanj	DESIGNED -	REVISED -
PLOT SCALE = 100.0000 ' / in.	DRAWN -	REVISED -
PLOT DATE = 3/21/2018	CHECKED -	REVISED -
	DATE -	REVISED -

**STATE OF ILLINOIS  
DEPARTMENT OF TRANSPORTATION**

**PAVEMENT MARKING PLAN**

SCALE: 1" = 50'    SHEET 1 OF 3 SHEETS    STA. 1430+00 TO STA. 1458+00

F.A.P. RTE.	SECTION	COUNTY	TOTAL SHEETS	SHEET NO.
646	(104)RS-6	BUREAU	14	10
CONTRACT NO. 66J22				
ILLINOIS FED. AID PROJECT				



MODEL: Default  
 FILE: h:\m\c\p\11\1108\EBID\NTEC\Illinois.gov\FWIDOT\Documents\DOT\_Offices\Director\_3\Projects\1036622\CADD\plan\1036622-rte-plan.dgn

USER NAME = jeanj	DESIGNED -	REVISED -
	DRAWN -	REVISED -
PLOT SCALE = 100.0000' / in.	CHECKED -	REVISED -
PLOT DATE = 3/21/2018	DATE -	REVISED -

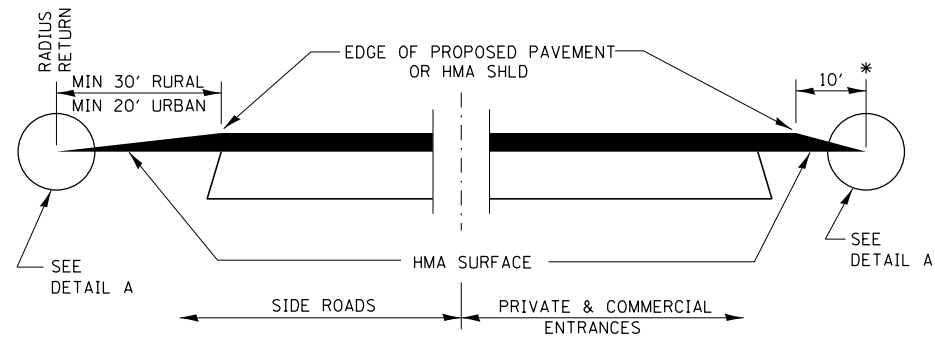
**STATE OF ILLINOIS**  
**DEPARTMENT OF TRANSPORTATION**

**PAVEMENT MARKING PLAN**

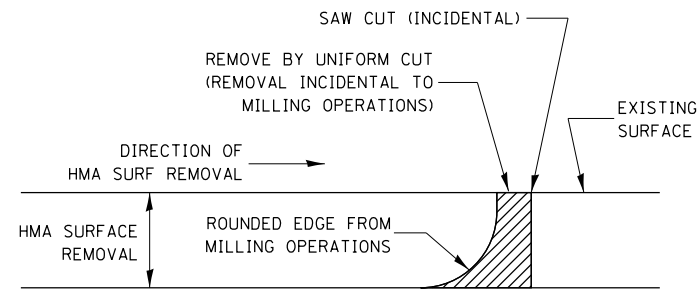
SCALE: 1" = 50'    SHEET 2 OF 3 SHEETS    STA. 1458+00 TO STA. 1487+00

F.A.P. RTE.	SECTION	COUNTY	TOTAL SHEETS	SHEET NO.
646	(104)RS-6	BUREAU	14	11
CONTRACT NO. 66J22				
ILLINOIS FED. AID PROJECT				





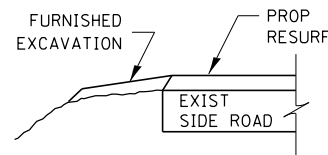
**SECTION A-A**  
**DETAILS AT ENTRANCES & SIDE ROADS**



**NOTE:**  
WHEN MILLING OPERATIONS PRODUCE A ROUNDED EDGE, THEN A SAW CUT SHALL BE USED TO MANUFACTURE A PERPENDICULAR EDGE AS SHOWN IN THE DETAIL. THE ENGINEER SHALL BE THE SOLE JUDGE CONCERNING THE USE OF THIS DETAIL

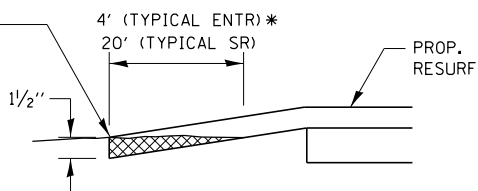
**HMA DETAIL AT BUTT JOINTS**

**406-8**

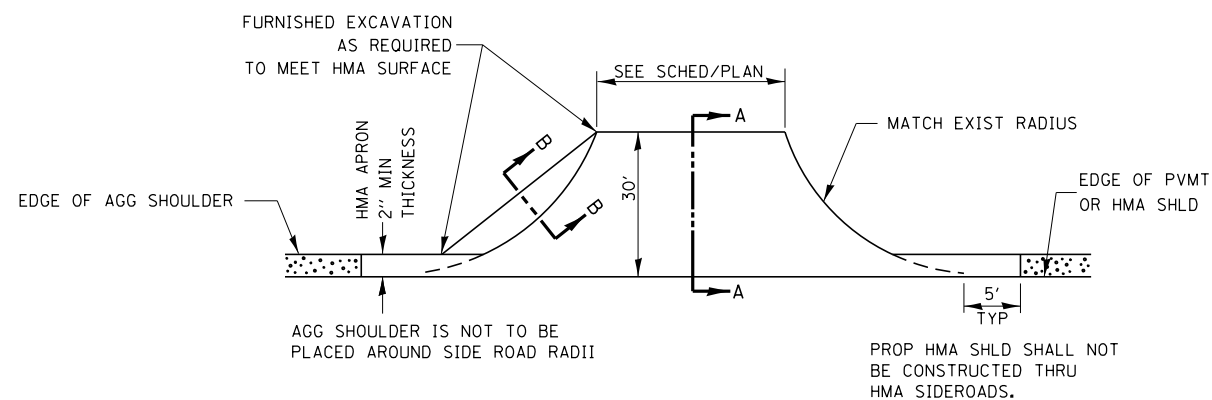


**SECTION B-B**

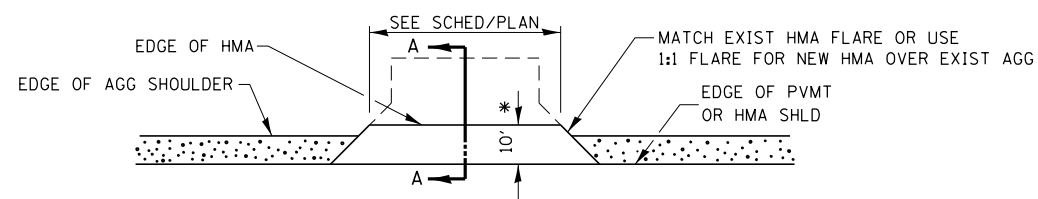
THE COST OF REMOVAL AT EXISTING HMA OR PCC LOCATIONS SHALL BE PAID FOR PER SQ YD BY THE APPROPRIATE PAY ITEM. REMOVAL AT THE EXISTING AGG LOCATIONS SHALL BE INCIDENTAL TO THE HMA. A-3 LOCATIONS SHALL BE FEATHER TAPERED.



**DETAIL A**



**PLAN AT SIDE ROADS**

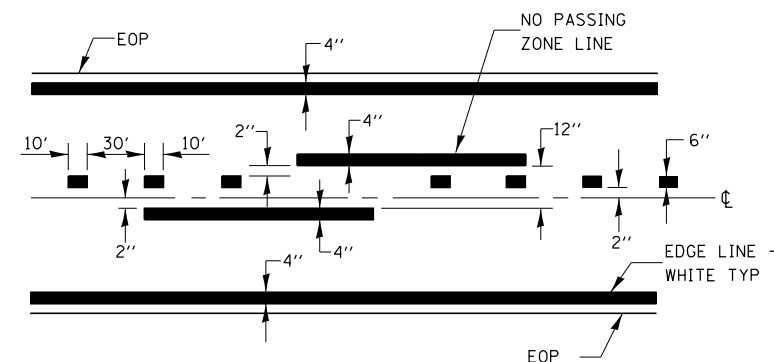


**PLAN AT PRIVATE & COMMERCIAL ENTRANCES**

(DO NOT RESURFACE FIELD ENTRANCES)

\* PROPOSED HMA RESURFACING AT PUBLIC EDUCATIONAL FACILITY ENTRANCES SHALL BE EXTENDED TO THE RIGHT-OF-WAY LIMITS.

**406-2**



CENTERLINE & NO PASSING ZONE LINES - YELLOW

**PAVEMENT MARKING**

**780-8**

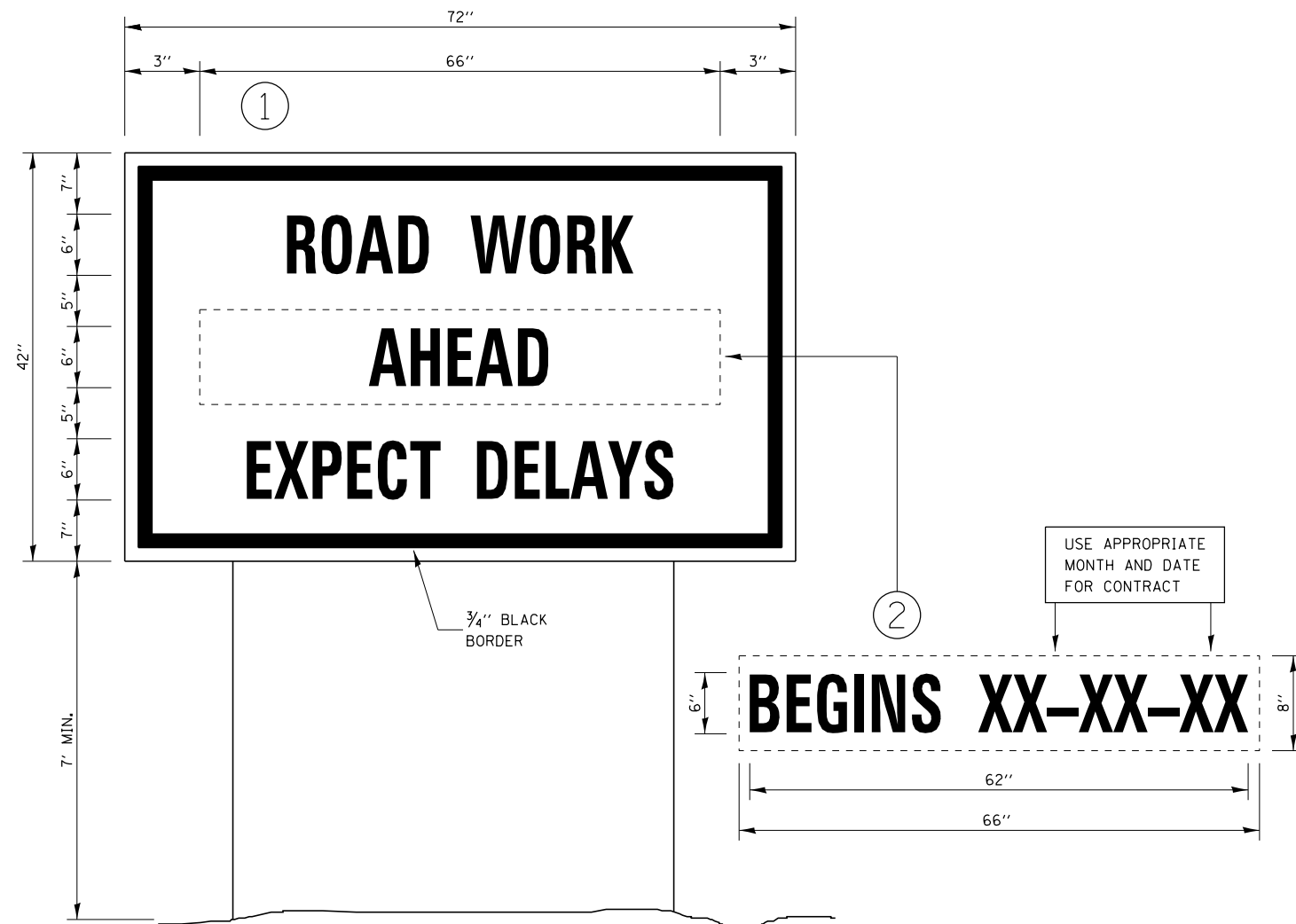
MODEL: Default  
FILE: \\nas01\pub\illinois\pav\pvd\dot\Documents\1\DOT\_Offices\1\104RS-6\104RS-6-1\406-2-ht-detail.kgm

USER NAME = jeanj	DESIGNED -	REVISED -
	DRAWN -	REVISED -
PLOT SCALE = 100,0000' / in.	CHECKED -	REVISED -
PLOT DATE = 3/21/2018	DATE -	REVISED -

**STATE OF ILLINOIS**  
**DEPARTMENT OF TRANSPORTATION**

<b>DETAILS</b>	
SCALE:	SHEET 1 OF 2 SHEETS STA. TO STA.

F.A.P. RTE.	SECTION	COUNTY	TOTAL SHEETS	SHEET NO.
646	(104)RS-6	BUREAU	14	13
CONTRACT NO. 66J22				
ILLINOIS FED. AID PROJECT				



### TEMPORARY INFORMATION SIGNING

#### NOTES:

1. USE 6" D BLACK LETTERING ON FLUORESCENT ORANGE BACKGROUND.
2. ERECT SIGNS AT LOCATIONS IN ADVANCE OF THE "ROAD CONSTRUCTION AHEAD" SIGNS AS DIRECTED BY THE ENGINEER.
3. ERECT SIGN ① WITH INSTALLED PANEL ② A MINIMUM OF ONE WEEK PRIOR TO THE START OF THE LANE CLOSURE.
4. REMOVE PANEL ② ON THAT DATE.
5. SEE SPECIAL PROVISION "TEMPORARY INFORMATION SIGNING" FOR ADDITIONAL INFORMATION.
6. WILL BE PAID FOR PER SQ FT AS "TEMPORARY INFORMATION SIGNING". EACH SIGN = 21 SQ FT AND THE DATE PANEL ② WILL NOT BE MEASURED SEPARATELY FOR PAYMENT.

720-8

MODEL: Default  
 FILE NAME: p:\u0000\B&E\BIDD\ITEC\Illinois\pov\PIV\DOT\Documents\1\DOT Office\1\Detail\3\Projects\0366J22\CADD\BansID366J22-rt-detail.dgn

USER NAME = jeanj	DESIGNED -	REVISED -
PLOT SCALE = 100,0000' / in.	DRAWN -	REVISED -
PLOT DATE = 3/21/2018	CHECKED -	REVISED -
	DATE -	REVISED -

STATE OF ILLINOIS  
DEPARTMENT OF TRANSPORTATION

DETAILS

SCALE: SHEET 2 OF 2 SHEETS STA. TO STA.

F.A.P. RTE.	SECTION	COUNTY	TOTAL SHEETS	SHEET NO.
646	(104)RS-6	BUREAU	14	14
CONTRACT NO. 66J22				
ILLINOIS FED. AID PROJECT				