

STATE OF ILLINOIS
DEPARTMENT OF TRANSPORTATION

F.A.I. RTE.	SECTION	COUNTY	TOTAL SHEETS	SHEET NO.
*	1101 Q-2	SANGAMON	8	1
		ILLINOIS	CONTRACT NO. 72K61	

*FAI 55 (I 55 W FR RD CANADIAN CROSS DR)

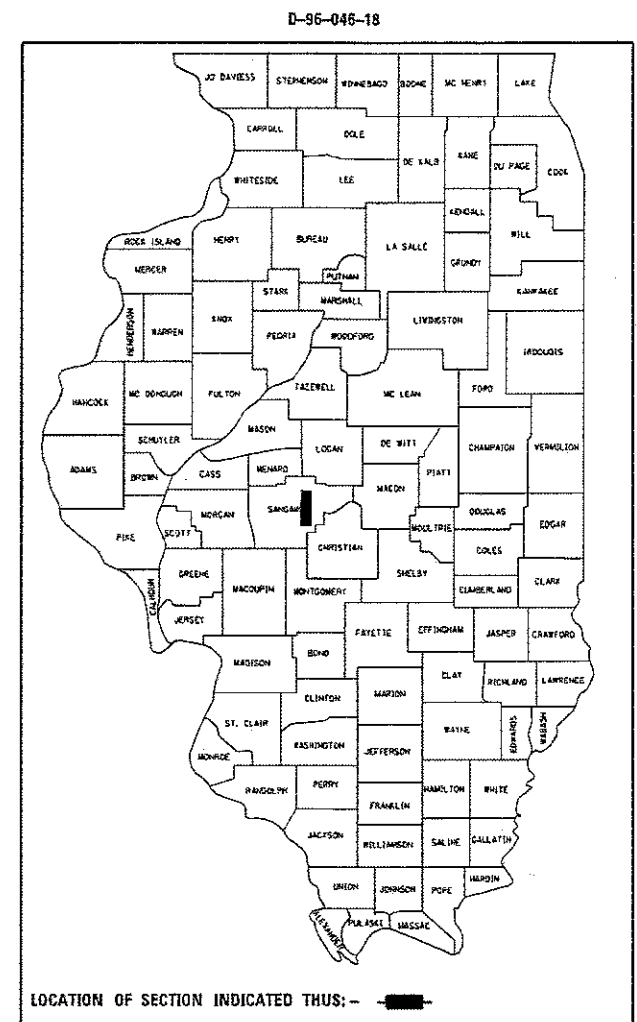
FOR INDEX OF SHEETS, SEE SHEET NO. 2

PROPOSED IMPROVEMENTS

FAI 55 (I 55 W FR RD CANADIAN CROSS DR)
(110) Q-2
BITUMINOUS SURFACE TREATMENT, A-2

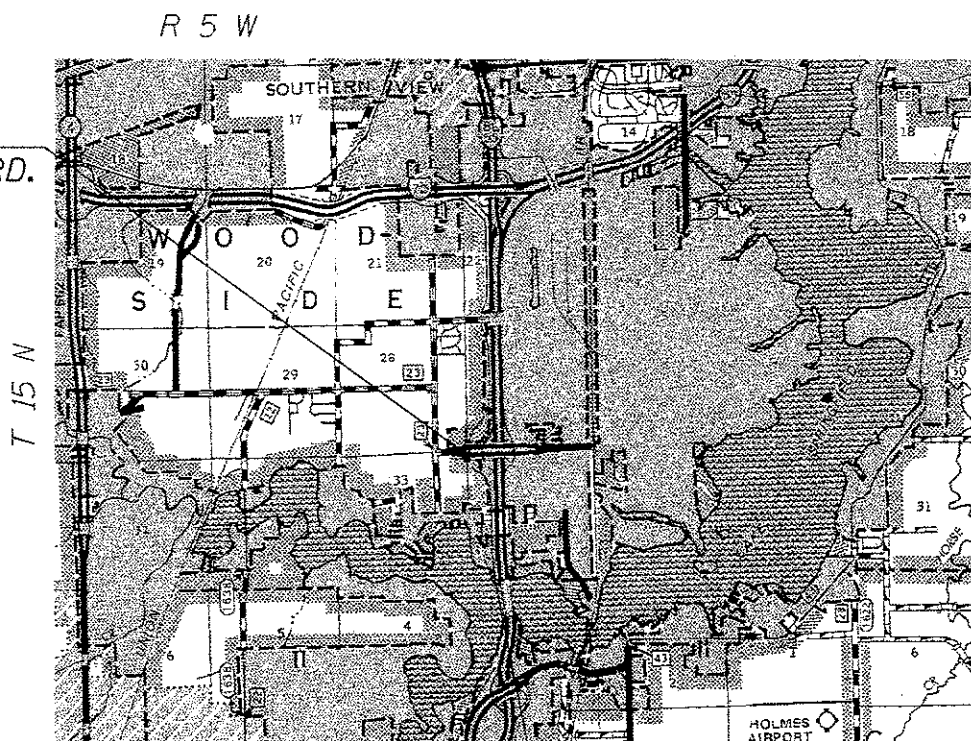
SANGAMON CO

C-96-090-18

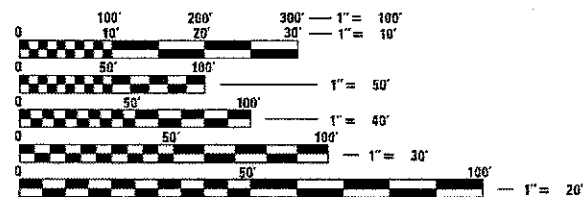


ADT = 500
SU = 3.4%
MU = 3.1%
PV = 93.5%

PROJECT BEGINS
I-55 WEST FRONTAGE RD.
STA. 222+21.11



PROJECT ENDS
STA. 276+06.71



FULL SIZE PLANS HAVE BEEN PREPARED USING STANDARD ENGINEERING SCALES. REDUCED SIZED PLANS WILL NOT CONFORM TO STANDARD SCALES. IN MAKING MEASUREMENTS ON REDUCED PLANS, THE ABOVE SCALES MAY BE USED.

J.U.L.I.E.
JOINT UTILITY LOCATION INFORMATION FOR EXCAVATION
1-800-892-0123
OR 811

PROJECT ENGINEER : MIKE IRWIN - (217)524-7765
PROJECT MANAGER : TIM SHARP - (217)524-9160

CONTRACT NO. 72K61

STATE OF ILLINOIS
DEPARTMENT OF TRANSPORTATION

SUBMITTED 3 April 2018

[Signature]
REGION FOUR ENGINEER

[Signature]
ENGINEER OF DESIGN AND ENVIRONMENT

[Signature]
DIRECTOR OF HIGHWAYS, PROJECT IMPLEMENTATION 3

PRINTED BY THE AUTHORITY
OF THE STATE OF ILLINOIS

INDEX OF SHEETS

SHEET NO.	DESCRIPTION
1.	COVER SHEET
2.	INDEX OF SHEETS, STANDARDS, GENERAL NOTES & SIGNATURE
3.	SUMMARY OF QUANTITIES
4.	SCHEDULE OF QUANTITIES
5.	PROJECT LOCATION MAP
6.-8.	PROJECT TYPICAL SECTIONS

STANDARDS

STANDARD NO.	DESCRIPTION
701006-05	OFF-ROAD OPERATIONS, 2L, 2W, 15' (4.5m) TO 24" (600mm) FROM EDGE OF PAVMENT
701201-04	LANE CLOSURE, 2L, 2W, DAY ONLY, FOR SPEEDS ≥ 45 MPH
701306-04	LANE CLOSURE, 2L, 2W, SLOW MOVING OPERATIONS DAY ONLY, FOR SPEEDS ≥ 45 MPH
701311-03	LANE CLOSURE, 2L, 2W, MOVING OPERATIONS, DAY ONLY
701901-07	TRAFFIC CONTROL DEVICES

NOTES:

COVER AND SEAL COAT AGGREGATE SHALL BE CRUSHED LIMESTONE.

D-6 OPERATIONS WILL PLACE PERMANENT PAVEMENT MARKINGS.

UP TO 3 SWEEPINGS MAY BE REQUIRED BY A ROTARY TYPE BROOM TO REMOVE EXCESS AGGREGATE.

STATE OF ILLINOIS DEPARTMENT OF TRANSPORTATION DIVISION OF HIGHWAYS DISTRICT 6	
EXAMINED	<u>March 29th 20 18</u>
	<u>[Signature]</u> ENGINEER OF OPERATIONS
EXAMINED	<u>March 15th 20 18</u>
	<u>[Signature]</u> ENGINEER OF PROJECT IMPLEMENTATION
EXAMINED	<u>March 17 20 18</u>
	<u>[Signature]</u> ENGINEER OF PROGRAM DEVELOPMENT

0-01624-6025
100% STATE
SANGAMON

CODE NO.	ITEM	UNIT	TOTAL QUANTITY	ROADWAY
				0005 URBAN
40300400	BITUMINOUS MATERIALS (COVER AND SEAL COATS)	TON	34	34
40300500	COVER COAT AGGREGATE	TON	140	140
40300800	SEAL COAT AGGREGATE	TON	112	112
40600400	MIXTURE FOR CRACKS, JOINTS, AND FLANGEWAYS	TON	3	3
44201449	CLASS C PATCHES, TYPE IV, 18 INCH	SQ YD	32	32
67100100	MOBILIZATION	L SUM	1	1
70100450	TRAFFIC CONTROL AND PROTECTION, STANDARD 701201	L SUM	1	1
70100460	TRAFFIC CONTROL AND PROTECTION, STANDARD 701308	L SUM	1	1
78300200	RAISED REFLECTIVE PAVEMENT MARKER REMOVAL	EACH	46	46

FILE NAME :	USER NAME :	DESIGNED :	REVISED :	STATE OF ILLINOIS DEPARTMENT OF TRANSPORTATION	SUMMARY OF QUANTITIES	*FAI 55 (I 55 W FR RD CANADIAN CROSS DR)			
SRCONTRAGINT.CAD72K61 - FAI 55 (I 55 W	FR RD Canadian Cross Dr, Sangamon Co - A2V	06/26/2018	REVISED :			F.A.I. SECTION COUNTY TOTAL SHEET	RTE. (11D) 0-2 SANGAMON 8 3		
Default:	PLOT SCALE : 39.9999 / in	CHECKED :	REVISED :			CONTRACT NO. 72K61			
	PLOT DATE : 3/29/2018	DATE :	REVISED :			ILLINOIS FED. AID PROJECT			
				SCALE: SHEET OF SHEETS STA. TO STA.					

SANGAMON COUNTY			40300400 BITUMINOUS MATERIALS (COVER COAT & SEAL COAT)								40300500 COVER COAT AGGREGATE		40300600 SEAL COAT AGGREGATE		
LOCATION	LENGTH	WIDTH	AREA	COVER COAT (0.32TON/SQ YD * 8.5PPG)				SEAL COAT (0.40TON/SQ YD * 8.5PPG)				RATE	TON	RATE	TON
	FT	FT	SQ YD	RATE	PPG	POUND	TON	RATE	PPG	POUND	TON	TON/SQ YD		TON/SQ YD	
I-55 W. Frontage Rd.	3593.36	22	8783.77	0.32	8.5	2000	11.95	0.4	8.5	2000	14.93	0.0125	110	0.01	88
	1211.44	18	2422.88	0.32	8.5	2000	3.30	0.4	8.5	2000	4.12	0.0125	30	0.01	24
TOTAL	4804.8		11206.65			TOTAL	15.24			TOTAL	19.05	TOTAL	140	TOTAL	112
TOTAL BITUMINOUS MATERIALS, COVER COAT + SEAL COAT (TON)											34				

40600400 MIXTURE FOR CRACKS, JOINTS, AND FLANGE WAYS	TON
	3

SANGAMON COUNTY		78300200 RAISED REFLECTIVE PAVEMENT MARKER REMOVAL	
LOCATION	LENGTH	SPACING	EACH
	(FEET)	(FEET)	
I-55 W. Frontage Rd.	3594	80	46

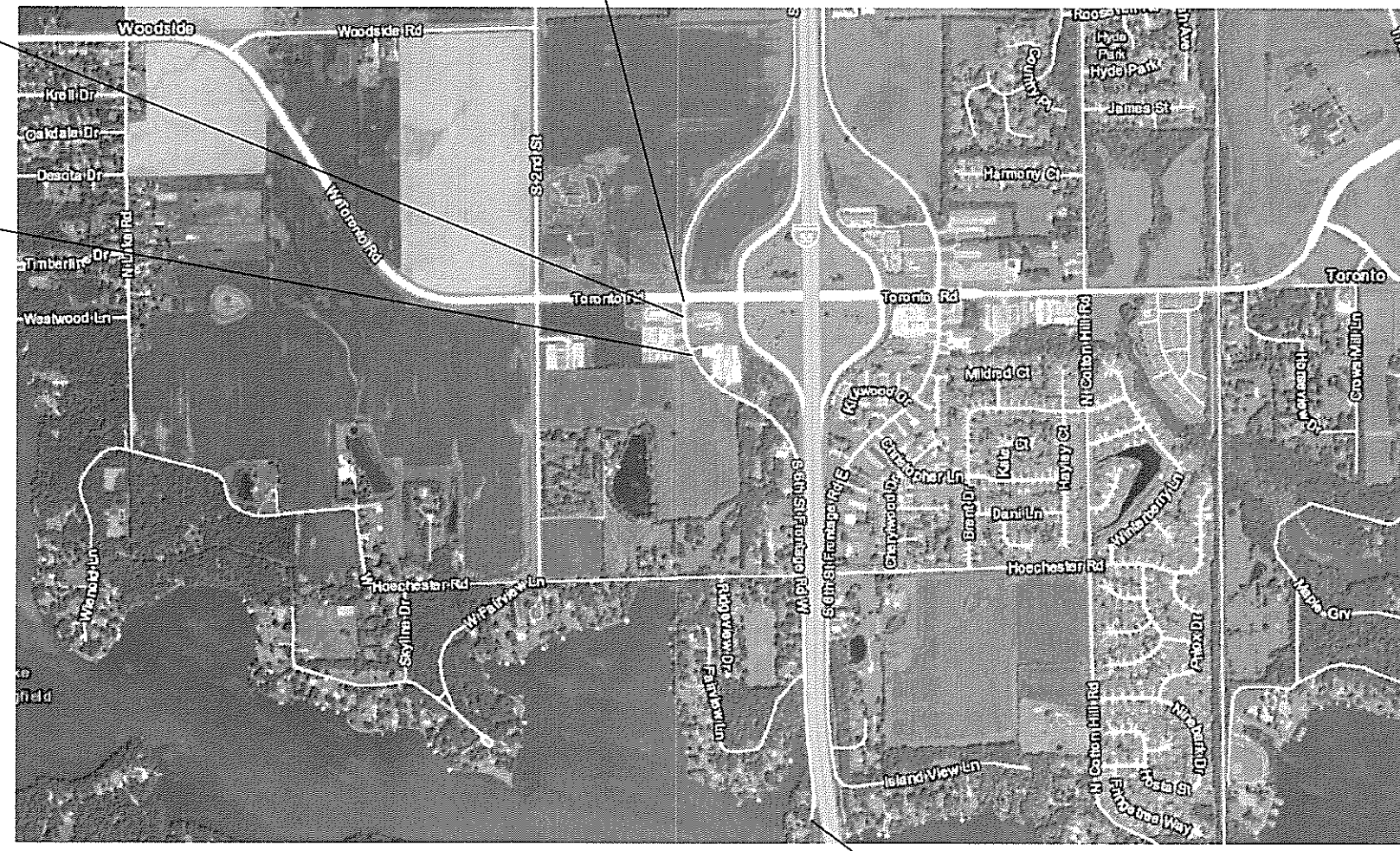
SANGAMON COUNTY		RIGHT LANE		44201449 CLASS C PATCHES, TY. IV, 18"
LOCATION	LENGTH	WIDTH	AREA	
	FT	FT	SQ YD	
I-55 W. Frontage Rd.	24	12	32	



PROJECT BEGINS
I-55 WEST FRONTAGE RD.
STA. 222+21.11

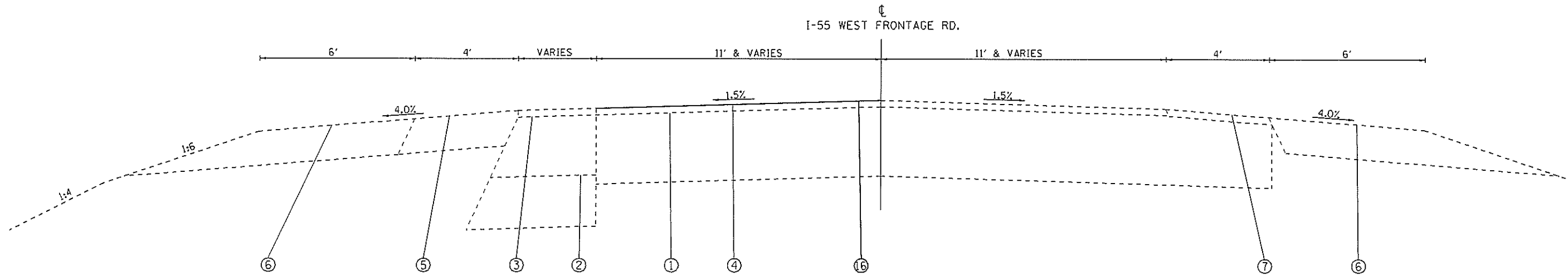
CLASS C PATCHES,
TYPE IV, 18"
STA. 223+79.51

BITUMINOUS SURFACE TREATMENT,
A-2 BEGINS
STA. 228+01.91



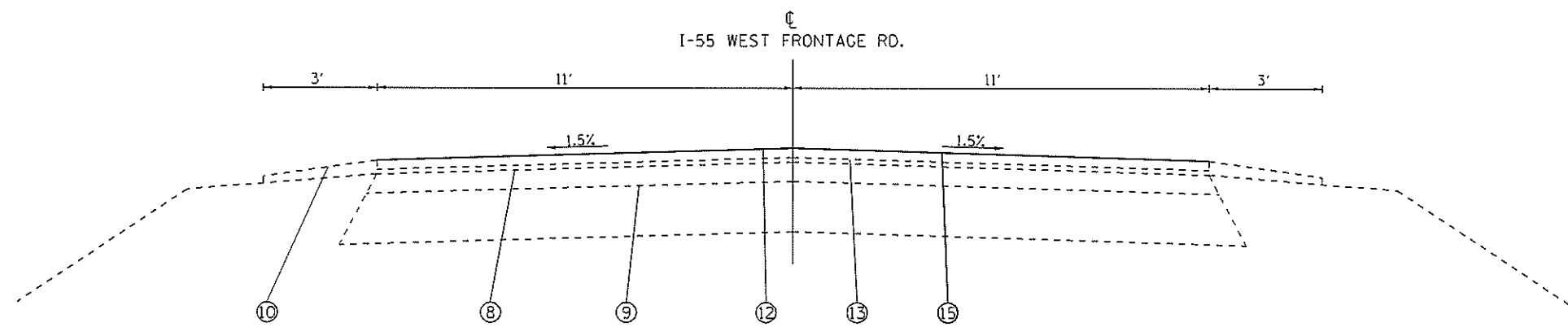
PROJECT ENDS
STA. 276+06.71

FILE NAME =	USER NAME = CANCEL	DESIGNED -	REVISED -	STATE OF ILLINOIS DEPARTMENT OF TRANSPORTATION	LOCATION MAP	*FAI 55 (I 55 W FR RD CANADIAN CROSS DR)				
S:\CONTRMAINT_CAD\72K61 - FAI 55 (I 55 W	FR RD Canadian Cross Dr, Sangamon Co - A2V	ORAWZK61-sh+5-plans.dgn	REVISED -			F.A.I. RTE.	SECTION	COUNTY	TOTAL SHEETS	SHEET NO.
PLOT SCALE = 40.0013 1/ in.	CHECKED -	REVISED -	REVISED -			(110) Q-2	SANGAMON	8	5	
Default	PLOT DATE = 3/29/2010	DATE -	REVISED -			CONTRACT NO. 72K61				
					SCALE: _____ SHEET _____ OF _____ SHEETS STA. _____ TO STA. _____		ILLINOIS FED. AID PROJECT			



TYPICAL SECTION 1
 STA. 222+38.62 TO STA. 224+00.00
 OMISSION STA. 222+21.11 TO STA. 222+38.62

- NOTES:
- 1) CLASS C PATCHES, TY IV, 18" AT STA 223+79.51 (RIGHT LANE - JUST NORTH OF ENTRANCE TO GAS STATION)



TYPICAL SECTION 2
 STA. 224+00.00 TO STA. 259+36.53

- NOTES:
- 2) BITUMINOS SURFACE TREATMENT, A-2 BEGINS AT STA. 228+01.91 (PARALLEL TO THE END OF COMBINATION CONCRTE CURB AND GUTTER)

LEGEND:

- ① EXIST. BITUMINOUS PAVEMENT, 16"
- ② EXIST. SUB-BASE GRANULAR MATERIAL, TYPE B, 11-3/4"
- ③ EXIST. BITUMINOUS CONCRETE BASE COURSE WIDENING, 13-3/4"
- ④ EXIST. POLYMERIZED BITUMINOUS CONCRETE SURFACE COURSE, SUPERPAVE, MIX. D, 1-1/2"
- ⑤ EXIST. BITUMINOUS SHOULDERS, 8"
- ⑥ EXIST. AGGREGATE SHOULDERS, TYPE A, 8"
- ⑦ EXIST. BITUMINOUS SHOULDERS, 1-1/2"
- ⑧ EXIST. BITUMINOUS SURFACE, 3"
- ⑨ EXIST. AGGREGATE BASE, 8"
- ⑩ EXIST. AGGREGATE SHOULDERS, TYPE B
- ⑪ EXIST. COMBINATION CURB & GUTTER, TYPE B-6.24
- ⑫ EXIST. BITUMINOUS CONCRETE SURFACE COURSE, SUPERPAVE, MIX. C, 1-1/2"
- ⑬ EXIST. LEVELING BINDER, MACHINE METHOD, SUPERPAVE, NSO, 3/4"
- ⑭ EXIST. BITUMINOUS SHOULDER
- ⑮ PROP. BITUMINOUS SURFACE TREATMENT, A-2
- ⑯ CLASS C PATCHES, TY. IV, 18"

PROJECT: I-55 WEST FRONTAGE ROAD CANADIAN CROSS DRIVE
 FILE NAME: S:\CONTRACTS\72K61\I-55 W FR RD CANADIAN CROSS DR - 222+38.62 TO 224+00.00.dwg

USER NAME = CANCEL DESIGNED - DRAWN - CHECKED - PLOT DATE = 3/29/2018				REVISIONS REVISION - REVISION - REVISION - REVISION -				STATE OF ILLINOIS DEPARTMENT OF TRANSPORTATION				TYPICAL SECTIONS				P.A. RTE. SECTION COUNTY TOTAL SHEETS SHEET NO.	
SCALE:				SHEET OF SHEETS								STA. TO STA.				(110) Q-2 SANGAMON 8 6	
CONTRACT NO. 72K61										ILLINOIS EXP. AND PROJECT							

