



# Illinois Department of Transportation

Office of Intermodal Project Implementation / Division of Aeronautics  
1 Langhorne Bond Drive / Springfield, Illinois 62707-8415

June 11, 2018

SUBJECT: Sparta Community Airport  
Sparta, Illinois  
Randolph County  
Illinois Project Number: SAR-4583  
SBG Project Number: 3-17-SBGP-111/120/133/139  
Contract No. SP025  
Item No. 10A, June 15, 2018 Letting  
Addendum A

## NOTICE TO PROSPECTIVE BIDDERS

Attached is an addendum to the plans or proposal. This addendum involves revised and/or added material.

Reason for Addendum:  
Clarification on plan requirements.

To All Plan Holders:

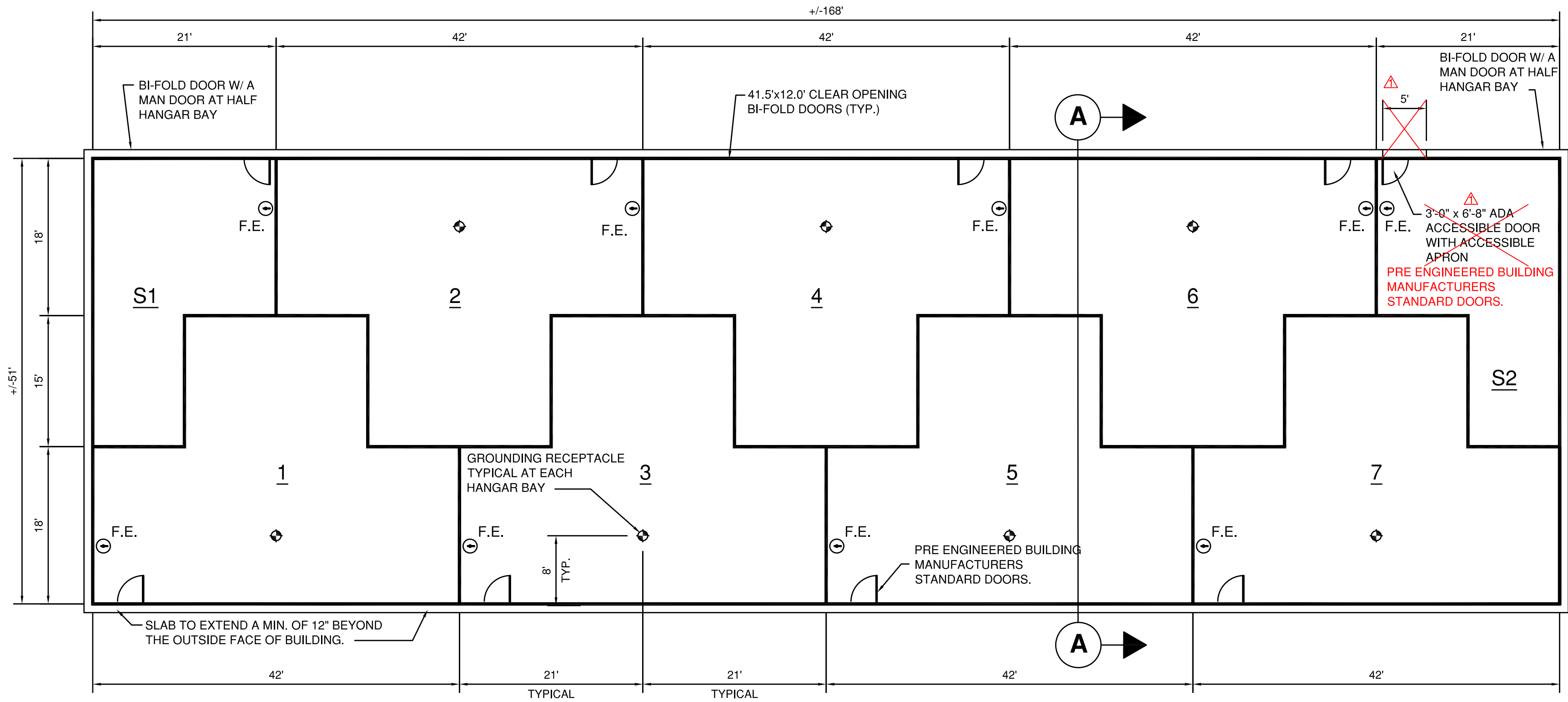
Sheet A1 (28 of 45) FLOOR PLAN:

1. REMOVE plan note at hangar S2 that states "3'-0" X 6'-8" ADA ACCESSIBLE DOOR WITH ACCESSIBLE APRON." and REPLACE with "PRE ENGINEERED BUILDING MANUFACTURERS STANDARD DOORS."
2. REMOVE the 5' dimension line north of hangar bay S2 indicating an accessible apron.

Prime contractors must utilize the enclosed material when preparing their bid and must include any Schedule of Prices changes in their bid.

Questions on this addendum may be directed to Chris Groth, P.E. of Crawford, Murphy and Tilly, Inc. at 217-787-8050.

Path: K:\Sparta\01641203\Draw\Sheets\SAR4583-1641203-A105.dwg  
Date: Monday, June 11, 2018 10:04:48 AM



FLOOR PLAN  
SCALE 1:10

LEGEND

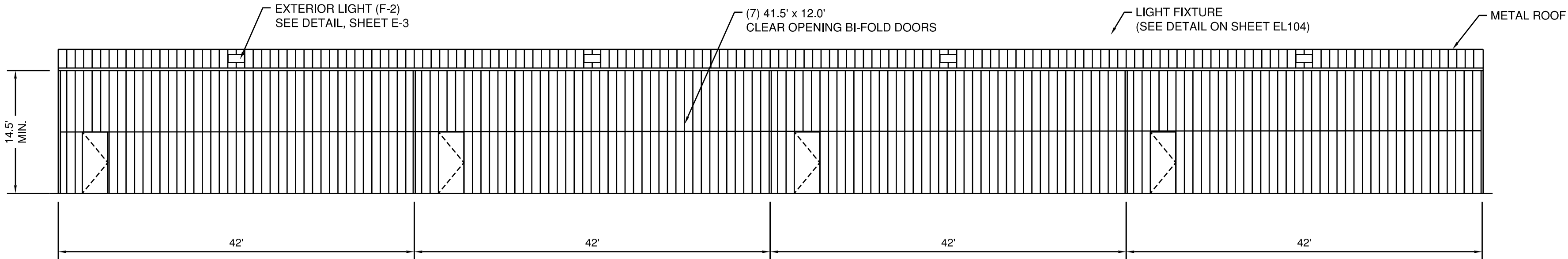
STATIC ELECTRICITY GROUNDING RECEPTACLE (SEE SHEET EL104 FOR DETAIL)

F.E.

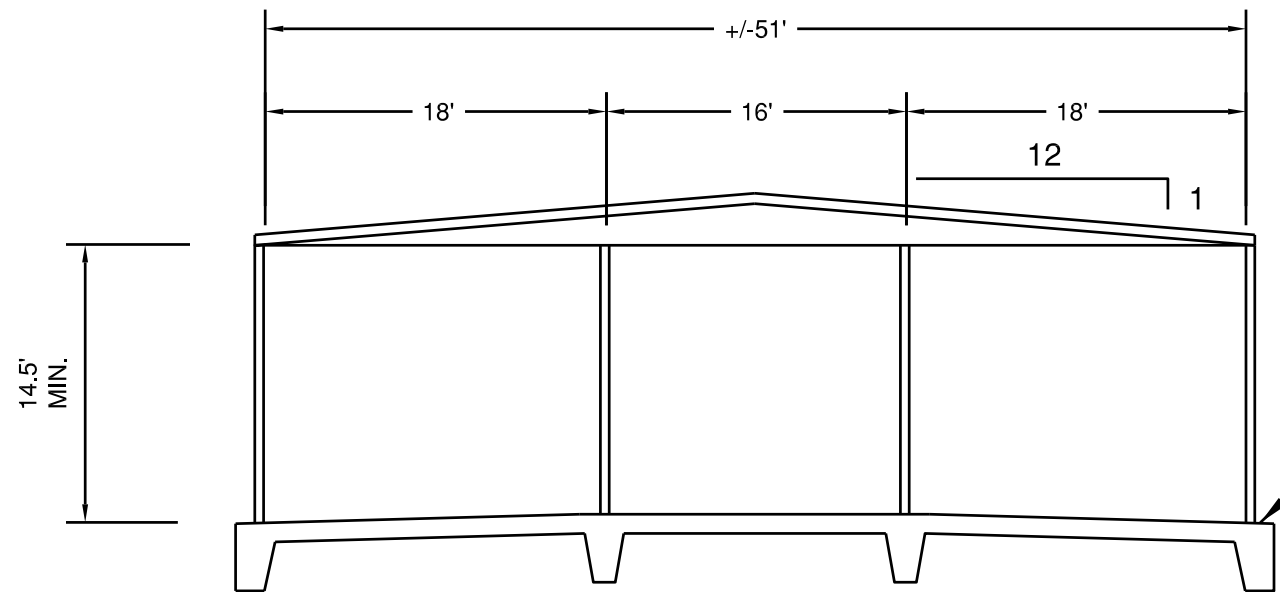
FIRE EXTINGUISHER:  
10lb. DRY CHEMICAL (ABC)

- GENERAL NOTES:
- HANGAR NUMBERS MAY NOT COORDINATE WITH AIRPORTS FINAL NUMBERING SCHEME. (SEE SPECIFICATION SECTION 133420 FOR DOOR DECALS)
  - PROVIDE ENTRANCE LEVER/ LATCH HARDWARE W/ HINGES, SILL, SWEEPS AND ACCESSIBLE THRESHOLD FOR ACCESSIBLE DOORS. PROVIDE STOP ARM FOR OUT SWINGING MAN DOORS.

REQUIRED DIMENSIONS	7 UNIT NESTED T-HANGAR
TOTAL BUILDING LENGTH	170' MAX.
TOTAL BUILDING WIDTH	52' MAX.
CLEAR DOOR WIDTH	41'-6" MIN.
CLEAR DOOR HEIGHT	14' MIN.
TAIL BAY WIDTH	21'-0" MIN.
WING DEPTH	18' MIN.
TOTAL BAY DEPTH	33' MIN.



BUILDING ELEVATION  
SCALE 1:10



BUILDING SECTION A-A  
SCALE 1:10

CONTRACTOR SHALL DESIGN OR HAVE DESIGNED FLOOR AND FOUNDATION USING REACTIONS FROM PRE-ENGINEERED STEEL BUILDING MANUFACTURER. FLOOR AND FOUNDATION SHALL BE SUBMITTED TO SPONSOR FOR REVIEW. FLOOR AND FOUNDATION DESIGN SHALL BE SIGNED AND SEALED BY A LICENSED STRUCTURAL ENGINEER IN THE STATE OF ILLINOIS.



License No. 184-000613  
CONSULTANTS

100% SUBMITTAL  
MARCH 2, 2018

REHAB T-HANGAR TAXILANES,  
CONSTRUCT NEW T-HANGAR &  
PAVEMENT

OWNER



SPARTA COMMUNITY AIRPORT  
SPARTA, IL

6/11/18 UPDATE ADA REQUIREMENT FOR DOOR S2

MARK DATE DESCRIPTION

AIP PROJ. NO: 3-17-SBGP-111/120/133/139  
IL PROJ. NO. SAR-4583  
CMT PROJECT NO: 1641203  
CAD DWG FILE: SAR4583-1641203-A105.DWG  
DESIGNED BY: NRF  
DRAWN BY: DPA  
CHECKED BY: CBG  
APPROVED BY: RLV  
COPYRIGHT:

SHEET TITLE

FLOOR PLAN AND  
EXTERIOR  
ELEVATIONS

SHEET 28 OF 45  
A1